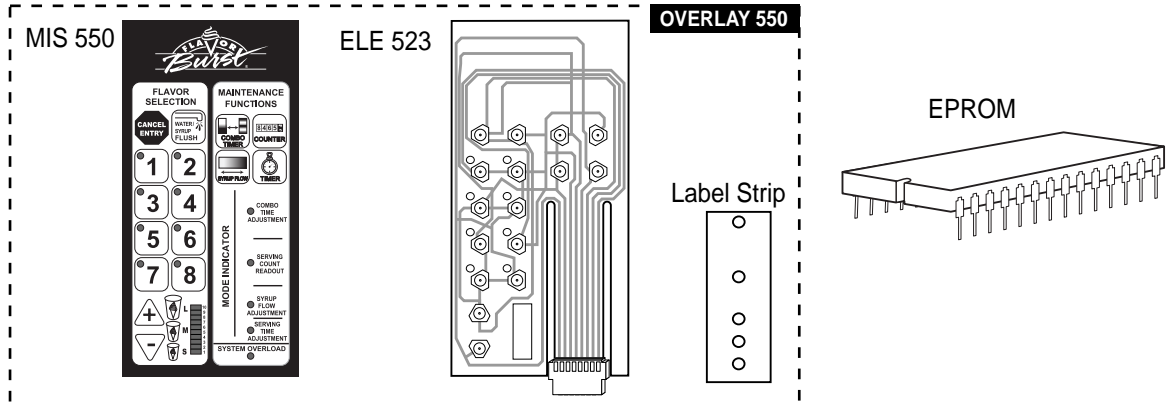


Flavor Burst®

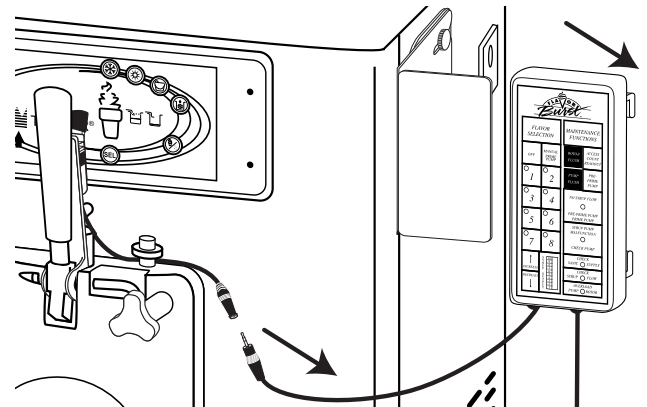
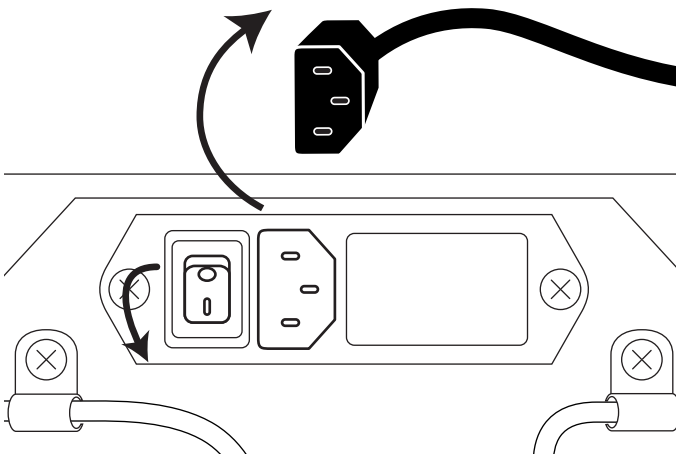
UPG FB 80a / FB 80Sa Upgrade Kit

Assembly and Installation

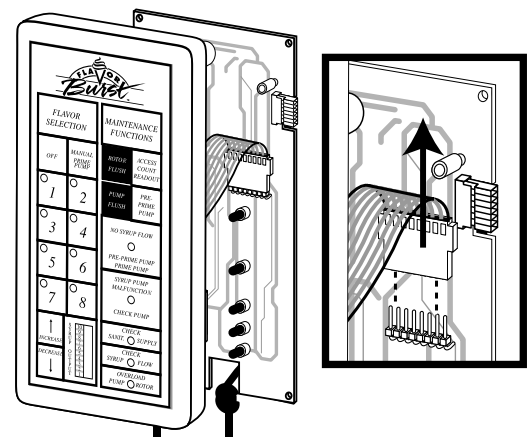
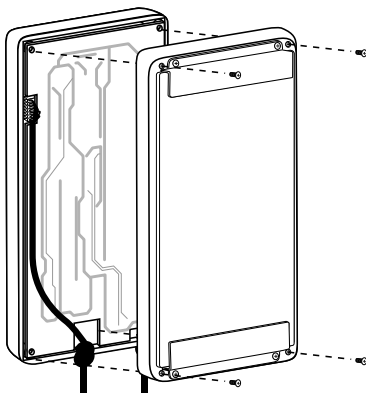
The UPG FB 80a / FB 80Sa upgrade kit updates the FB 80 and FB 80S systems with new keypad commands. This includes an eprom for new and consolidated keypad functions and a corresponding keypad label. Use the following instructions to remove the old keypad label, switch membrane and Eprom to install the upgrade. For more information, contact your local distributor.



- 1 Turn the power off and disconnect the power cable from the board located at the upper back of the cabinet.
- 2 Remove the Keypad from the freezer bracket and disconnect it from the spigot switch.

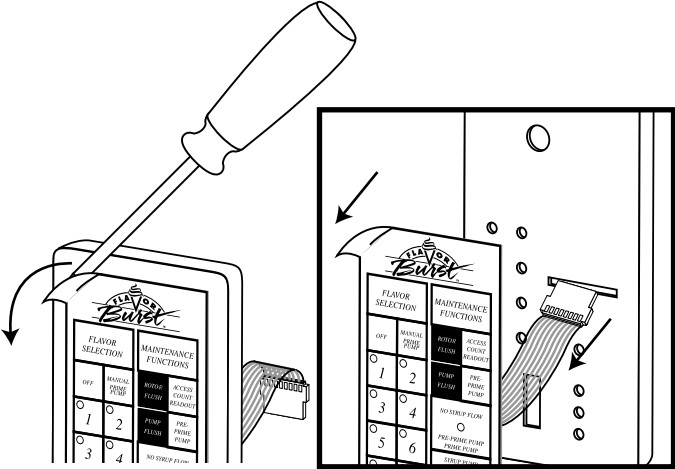


- 3 Loosen the outer screws and remove the back cover of the keypad.
- 4 Carefully disconnect the electronics board from the electrical ribbon and set it aside.

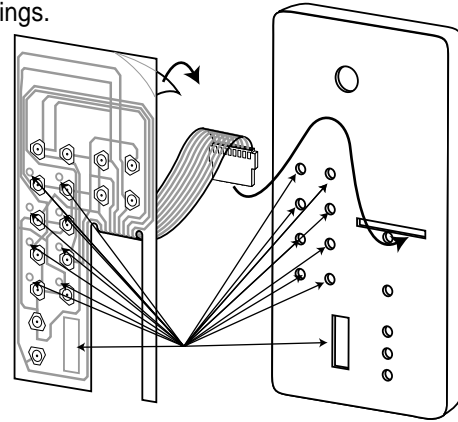


NOTE: IF THE KEYPAD BRACKETS ARE COVERING THE SCREW HOLES, REMOVE THE BRACKETS FIRST AND THEN REMOVE THE KEYPAD SCREWS.

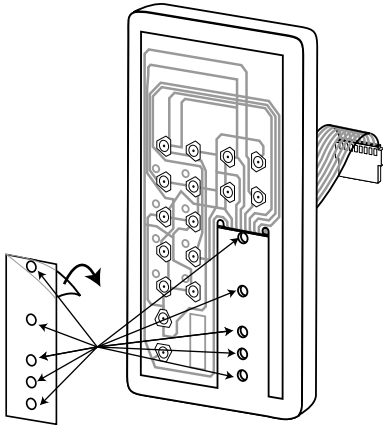
- 5** Use a flat head screwdriver to peel off a corner of the keypad label, then carefully remove the whole label and the switch membrane with ribbon behind it.



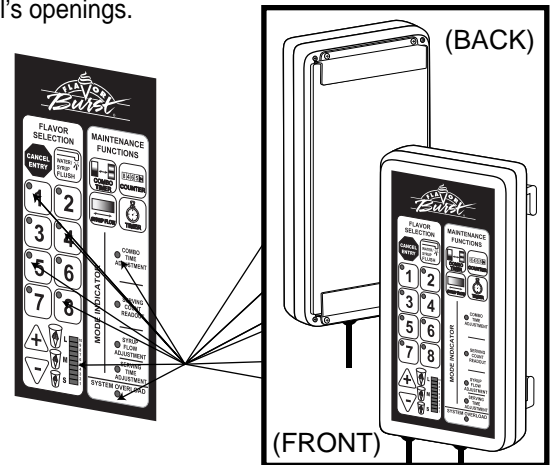
- 6** Remove the protective tape from the back of the ELE 523 switch membrane. Insert the ribbon into the slot on the keypad and affix the switch membrane to the keypad face. First ensure the rectangular opening on the switch membrane lines up with the opening on the keypad and then line up the 8 circles with the keypad's circular openings.



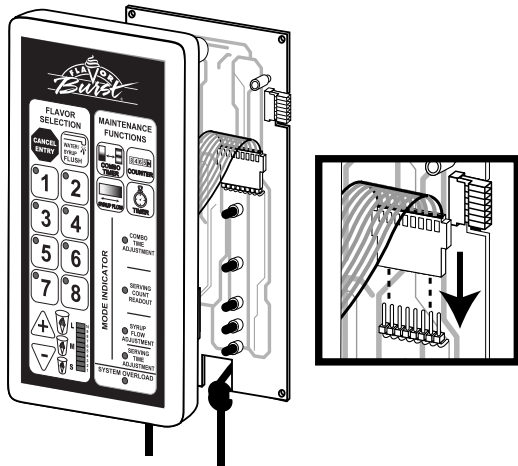
- 7** Remove the protective tape from the back of the small label strip and affix it to the exposed section of the keypad face under the ribbon slot. Ensure the circles on the label strip line up with the keypad panel's circular openings.



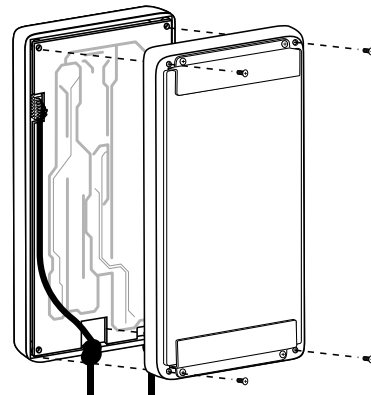
- 8** Remove the protective tape from the back of the new overlay keypad label and affix it to the face of the keypad face on top of the switch membrane. Ensure the transparent windows of the label line up with the keypad panel's openings.



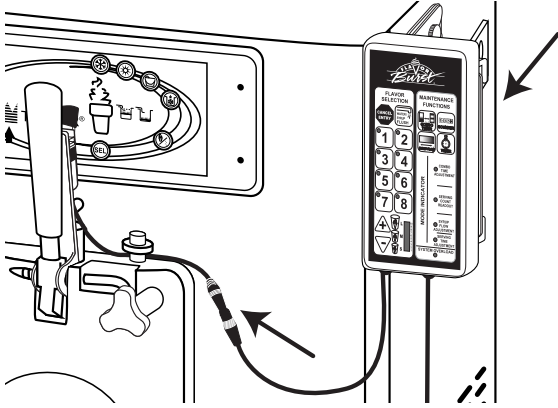
- 9** Carefully connect the electrical ribbon to the plug on the electronics board.



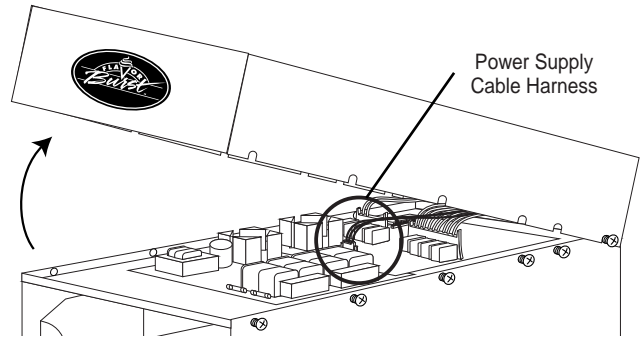
- 10** Line up the screw holes of the front cover, the electronics board and the back cover and secure them together with the screws. If the keypad brackets were removed, install them to the back of the keypad.



- 11 Return the keypad to the freezer bracket and connect it to the spigot switch.



- 12 Remove the cabinet top by loosening the 6 screws along each side and partially lifting the front end to access the power supply cable harness on the electronics board.

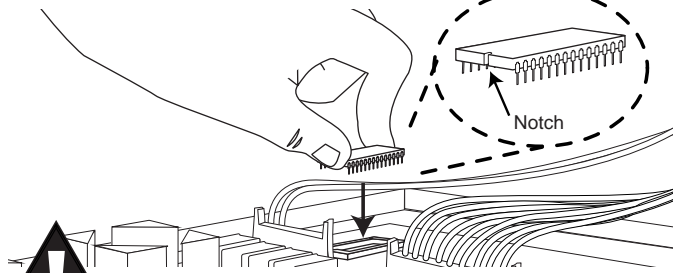


- 13 Disconnect the power supply cable harness to gain full access to the EPROM on the electronics board.

- 14 Using an EPROM pulling tool, carefully remove the existing EPROM in a vertical motion from the board.

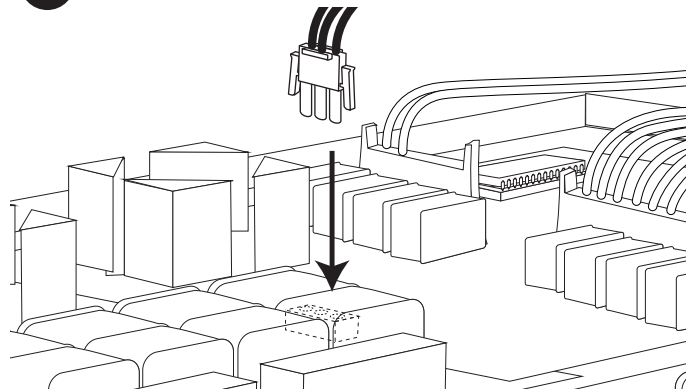
! **NOTE:** HANDLE WITH CARE -- EPROM PINS MUST REMAIN UNIFORM! RETURN THE ORIGINAL EPROM WITH THE PACKAGING FROM THE UPDATED EPROM TO ENSURE PROPER CREDIT.

- 15 Install the new EPROM in the board by carefully aligning the EPROM pins and pressing into place.



! **NOTE:** BE SURE THAT THE NOTCH ON THE EPROM ALIGNS WITH THE NOTCH IN THE EPROM BASE.

- 16 Reconnect the power supply cable harness.



- 17 Replace the cabinet top and tighten the 6 screws along each side to secure.

