

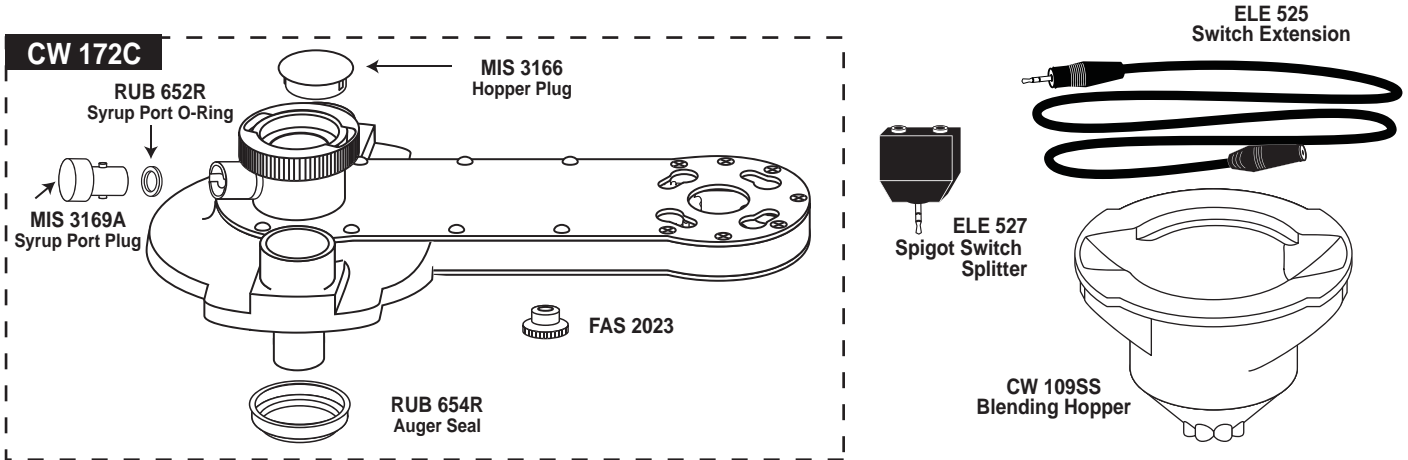
Flavor Burst™

UPG CC8CP CC8C Upgrade Kit

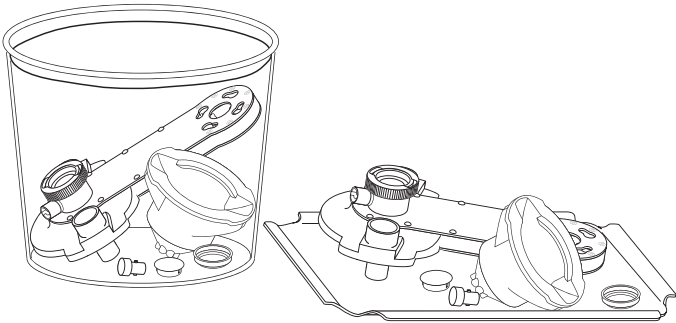
Installation

The UPG CC8CP is used to upgrade a standard FB CC8 system to the FB CC8C system. The kit includes a modified Gear Box Assembly with syrup port which is used for attaching the syrup-based Flavor Burst system. A Spigot Switch Splitter is included to connect the draw switch to the keypads of both the CC8C and Flavor Burst systems. Follow these instructions to install the upgrade kit UPG CC8C. For more information, contact your local distributor.

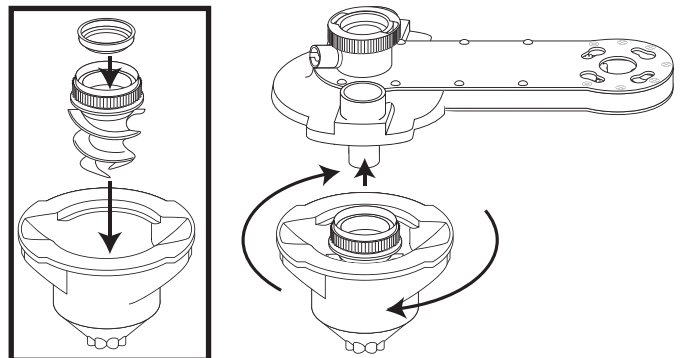
NOTE: ENSURE THE BLENDING ASSEMBLY IS REMOVED, DISASSEMBLED, CLEANED AND SANITIZED ACCORDING TO CLOSING PROCEDURES IN THE OPERATIONS MANUAL.



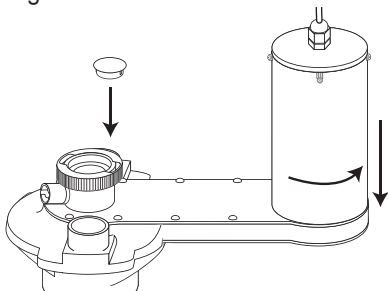
1 Remove the syrup port plug and the hopper plug from the CW 172C Gear Box Assembly and place all parts including the Blending Hopper in sanitizer solution for at least 1 minute. Then remove the parts and place them on a sanitary tray to dry.



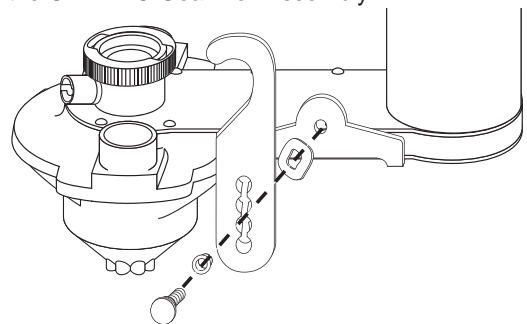
2 Place the seal in the Blending Auger and then place the Auger inside the Blending Hopper. Place the Auger and Hopper over the Blending Auger axis and into the grooves on the underside of the CW 172C Gear Box Assembly. Turn the Hopper clockwise until motion stops.



3 Insert the Drive Motor into the Gear Box so that all four locking screws are seated properly and rotate the Motor counter-clockwise to secure. Insert the hopper plug into the opening that will be closest to the freezer.

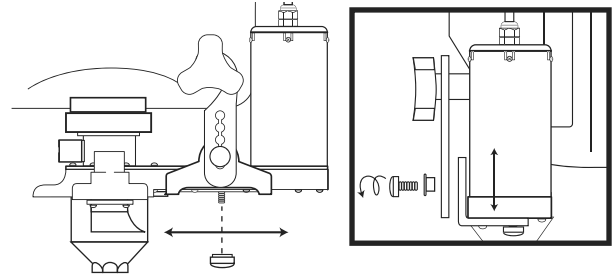


4 Remove the suspension bracket from the previous Gear Box Assembly and install it on the same side as the CW 172C Gear Box Assembly.



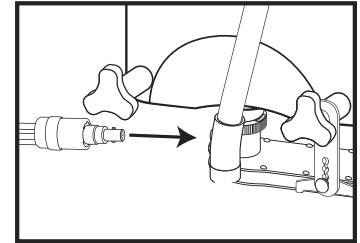
5 Hang the suspension bracket on the lower door post and install the Blending Head onto the door spout. Install the Blending Head collar fully over the spout adapter and rotate the locking collar to secure.

6 Use the Gear Box thumb nut to adjust the suspension bracket horizontally so that it hangs straight down from the door nut. Also, use the bracket thumb screw to adjust the bracket vertically so that it supports the Blending Assembly in a level position.

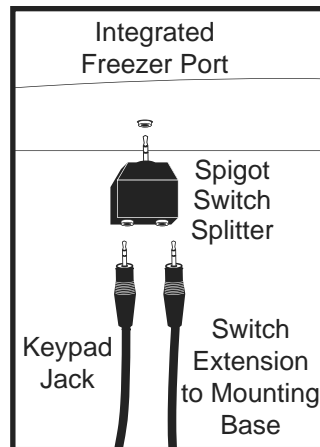


7 Install the top of the Hopper Tube Assembly into the Hopper opening until the Hopper Tube Adapter engages the lower portion of the internal Hopper funnel. Install the Tube Adapter and the lower end of the tube into the Blending Assembly port.

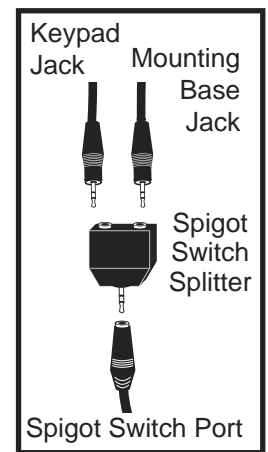
8 Remove the syrup port plug and insert the Flavor Burst 9-Tube Assembly manifold fully into the syrup port opening of the Blending Head. Rotate it until motion stops to secure the connection.



9A



9B



NOTE: DO NOT NEGLECT TO CHECK THESE CONNECTIONS DURING DAILY STARTUP.