

Flavor Burst®

UPG BLD75 Touchscreen Blend 7500RPM Conversion Kit

Assembly and Installation

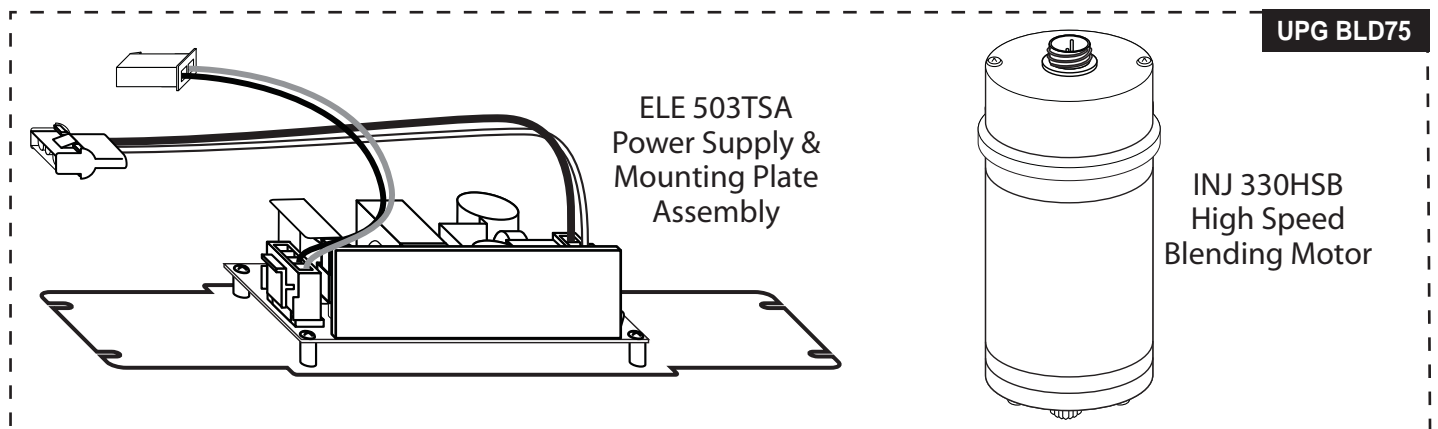
The UPG BLD 75 kit upgrades the early TS 80BLD Flavor Blend Touchscreen systems to a more effective, powerful Blend system. The new high speed motor and power supply blend syrups more thoroughly with the product without overloading the system. For more information, contact your local distributor.



NOTE: PRODUCT WITH HIGHER BUTTERFAT CONTENT MAY BE MORE DIFFICULT TO BLEND WITH SYRUPS.

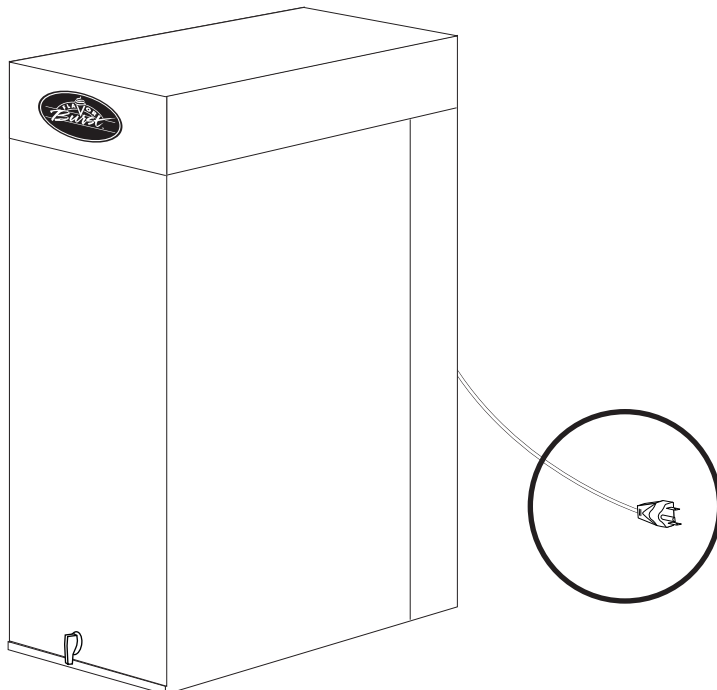


NOTE: FOR BEST RESULTS, TURN THE FREEZER DISPENSE SPEED DOWN TO THE LOWEST SETTING TO ALLOW ADEQUATE TIME FOR THE BLENDING ASSEMBLY TO BLEND SYRUP WITH THE PRODUCT.



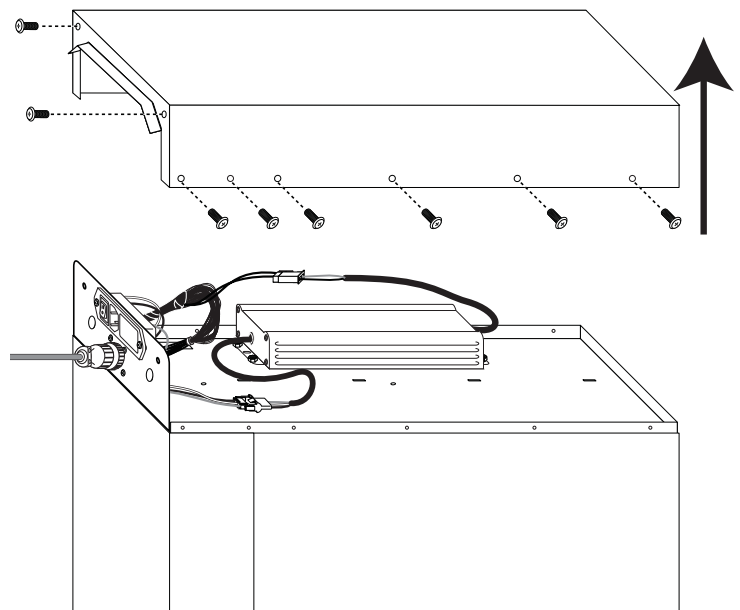
1

Ensure the Flavor Burst system is turned off and unplugged from the outlet to protect against electrical shock.

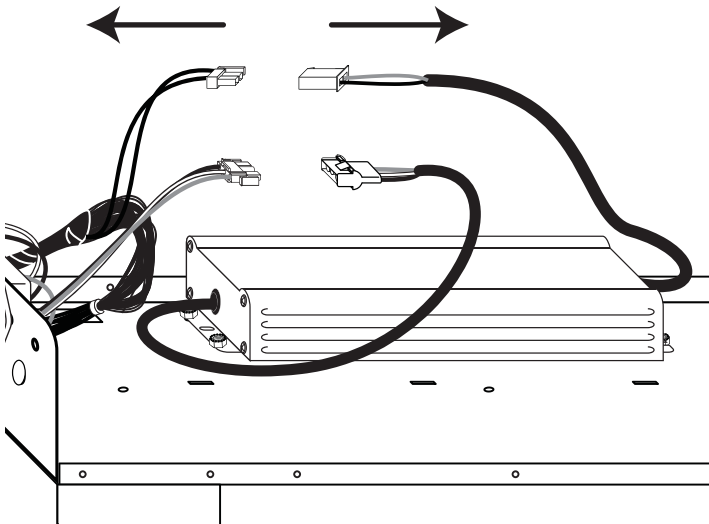


2

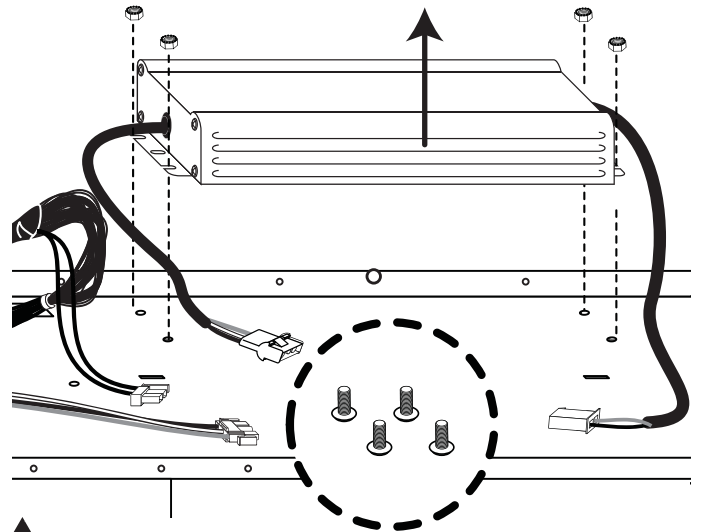
Remove the cabinet top from the cabinet.



- 3** Disconnect the Power Supply connections from the Power Entrance Module and the Pump Harness Cable.

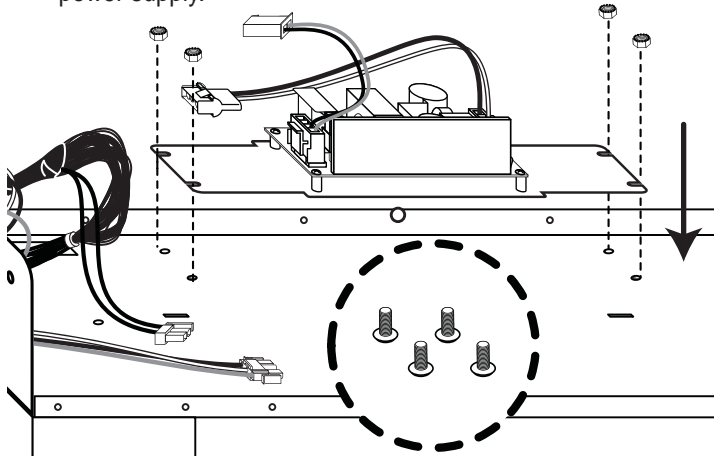


- 4** From inside the cabinet, unscrew the Power Supply from the locking nuts. Remove the Power Supply.

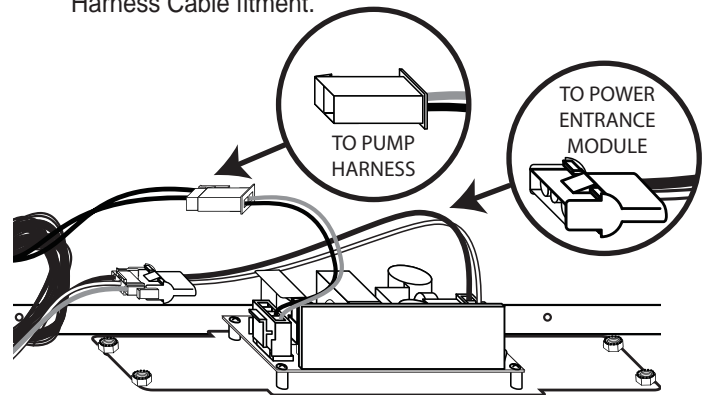


NOTE: FOUR SCREWS SECURE THE POWER SUPPLY FROM THE UNDERSIDE OF THE PANEL. YOU MAY NEED TO REMOVE THE TOP SYRUP TRAYS TO ACCESS AND REMOVE THE SCREWS.

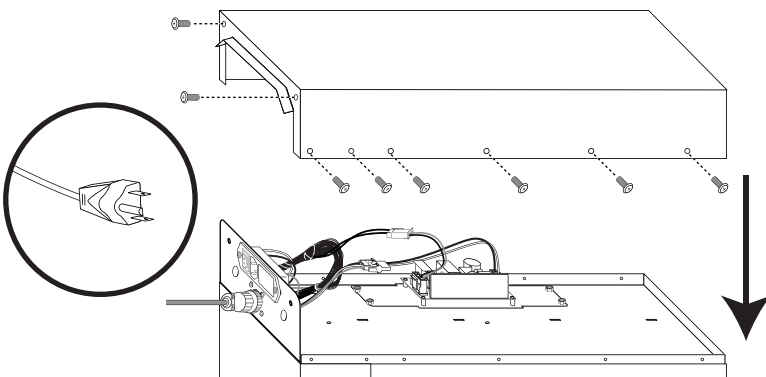
- 5** Install the new ELE 503TSA Power Supply Assembly to the cabinet panel using the screws and nuts from the previous power supply.



- 6** The new Power Supply should already have two cable connections attached to it. Connect the cable with the larger fitment to the Power Entrance Module fitment. Connect the smaller fitment to the Pump Harness Cable fitment.



- 7** Reinstall the cabinet top to the cabinet and connect it to the grounded outlet. Power up the system.



- 8** Disconnect the Blending Motor from the Blending Assembly, and install the new INJ 330HSB high speed motor. Test the system to ensure everything is functioning correctly.

