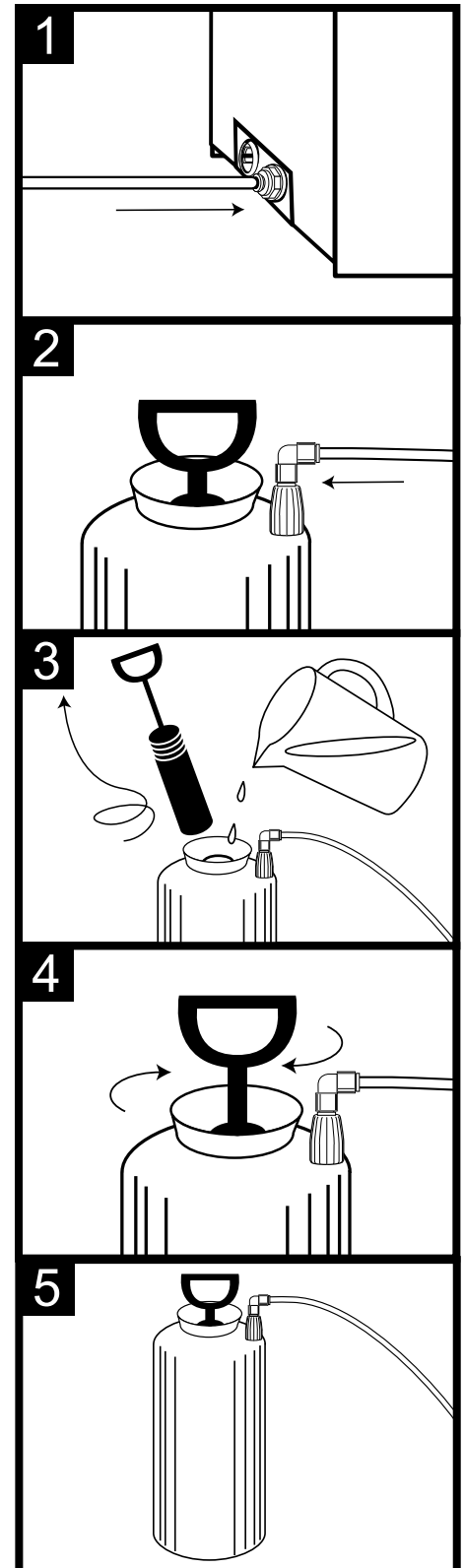


# SAN 740 Sanitizer System

1. Insert one end of the sanitizer tube into the Push-To-Connect fitment located at the lower back of the cabinet.
2. Insert the other end of the sanitizer tube into the Push-To-Connect fitment on the sanitizer tank.
3. Remove the hand pump from the sanitizer tank and fill the tank with sanitizer solution according to the manufacturer's instructions. See "Refilling the Sanitizer Tank" of the Flavor Burst Operations Manual for further information.
4. Reinstall the hand pump and tighten sufficiently.  
**NOTE: NO PRESSURE IS NEEDED IN THE TANK DURING NORMAL OPERATIONS. THE SEAL HAS BEEN REMOVED TO PREVENT PRESSURE BUILD-UP.**
5. Completed assembly. Check the tank weekly to assure there is plenty of solution in the tank for the Spout Flush function.



*If you have any further difficulty or questions during installation, please contact your authorized Flavor Burst distributor or contact the Flavor Burst Company for immediate assistance.*

