

PRINTING INSTRUCTIONS

1. Always print a test sheet before printing a batch of sheets. Once you have adjusted all the settings and have a successful print, then print a batch using those settings.
2. Print only Pages 2-3. This instruction sheet is page 1, so you need to tell your printer to only print pages 2 and 3.
3. Print at the file's "Original Size", "100%", or "Actual Size". Do not scale down the artwork or "fit to page". Doing so will end up printing all the extra registration/printers marks around the border. These marks are used by printing companies, should you need to have this file printed professionally. But if you are printing these yourself from a standard printer, setting the print size to the original size (or 100%) will exclude the registration/prINTER marks around the border. Find the section of your printer options named "Reduce/Enlarge", "Zoom", "Page Size", "Scale", or other similar names.
4. Print without borders or print edge-to-edge if your printer has this option. This will maximize the art area on your sheets and minimize the white border around the edges. Sometimes this option is in a more detailed or advance section of your printer options. Not all printers have this option. If your printer does not have this option, and the white border is cutting off more than you would like, you may scale down the artwork size to approximately 97%. You will still have a white border, but less artwork will be cut off by the border.
5. Print "double-sided" or "2-sided" if your printer has this option, when printing 2-page sales sheets. Again, make sure only pages 2 and 3 are selected, or this instruction page will print with your art pages. The double-sided option may be in a more detailed or advance section of your printer options. If your printer does not have this option, you will have to print one side, load the printed page into the feeder, and print the second side. Start by doing one page at a time to make sure you get the orientation of the printed page in the feeder correct. Then, when you have a successful double-sided print, print the rest in batches.
6. Set the Print Quality to the best detail setting. Sometimes this level is also called "high resolution" or "Photo" quality. Much of the text on these pages is small. Printing at a higher quality level will help keep the text and images clear and legible. Sometimes this option is in a more detailed or advance section of your printer options.
7. Use premium paper stock or card stock to get the best image and colors. Using thin paper may cause the inks to bleed through to the other side. Print a test page to ensure the quality is acceptable.

Flavor Burst® FROZEN CARBONATED BEVERAGE

THE PRODUCT

MULTI-FLAVORED TREATS, FROM A SINGLE FREEZER BARREL

- Offer up to 8 different flavors with one unit.
- Select multiple flavors for new or favorite combinations such as blue raspberry, cherry, strawberry-lemon, or a rainbow swirl! With 8-flavors, there are hundreds of possible combinations.
- Compatible with a variety of freezer models and bases, such as cola, lemon-lime and neutral bases.

ONE-STEP PROCESS

- Simply select as few or as many flavors as you like from the Color Touch Panel menu, and you are ready to draw the serving!
- Delicious flavors are blended throughout the base product as it dispenses, automatically changing from one flavor to the next with no additional steps.

FLAVOR BURST SYRUPS

- The syrups are specially formulated for Flavor Burst systems and are concentrated to give each serving that perfect burst of flavor.
- Each syrup is packaged in easy-to-install 1-gallon bags with an 16-month shelf life.
- No refrigeration is needed.
- Each gallon bag yields up to 240 16-oz servings*. That's 1,920 FCB servings* just from your first 8 flavors! (*based on 16-oz. serving size)
- 30 delicious flavors to choose from. With classics such as cherry and blue raspberry, to bold flavors like green apple, mango, and watermelon, Flavor Burst syrups provide variety to keep your menu selection fresh, colorful and exciting.



**FROZEN
CARBONATED BEVERAGES**



For pricing, availability, and ordering, please contact your local Taylor distributor. To find one near you, visit www.taylor-company.com

For other general questions or to learn about even more Flavor Burst flavoring systems, call 800-264-3528 or visit www.flavorburst.com.

© 2017 Flavor Burst Company. All Rights Reserved. Flavor Burst, Nice Ice, JavaLatte, Take A Shake Break, and CrunchiCreme are all registered trademarks of the Flavor Burst Company.

Flavor Burst®

Jumbo Touch Panel "3B" 3-barrel FCB systems

THE EQUIPMENT



JBT 80FCB-3B & Taylor C303 Freezer
(also compatible with C300)



JUMBO TOUCH PANEL

- 24" full-color, high resolution, touch-sensitive display that spans your entire freezer
- Upload videos, pictures, logos and graphics
- Customize flavor names, icons, container sizes, and product pricing
- Easy self-serve mode with portion control
- Installs on a C303 3-barrel freezer
- Jumbo Touch Panel size: 22.5 x 13.75 x 4.5 in (572 x 350 x 115 mm)

CABINET FEATURES

- Five models with different stainless steel cabinet styles
- Light-weight trays to hold the bags of syrup
- Easy to connect and disconnect syrup lines
- Sanitizer tank that provides clean-in-place sanitation for syrup lines



JBT 80FCB-3B

- Standard 8-flavor tall and narrow cabinet
- Large 3-gallon external sanitizer tank



Optional Upgrade!

AUTO DRAW VALVE KIT

- Part Number ADPTTY80-FCB1TS
- Alternate draw system where serving is drawn with the push of a button
- Auto shut-off with timed serving sizes
- Auto Draw Valve Kit sold separately

MANUAL DRAW SPOUT ASSEMBLY



- Standard with Flavor Burst FCB systems
- Delivers flavors directly to the spout opening
- Easy to install and operate
- Standard manual draw lever with magnetic pin to activate the switch
- Adapter kits available for a variety of freezer models
- Adjustable flow rate

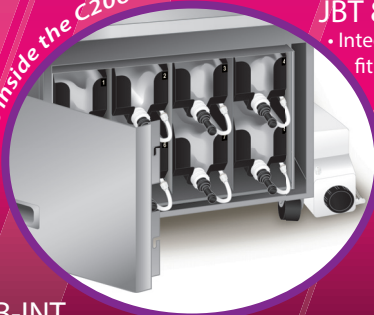
Fits Inside Taylor C201!



JBT 80FCB-3B-INT

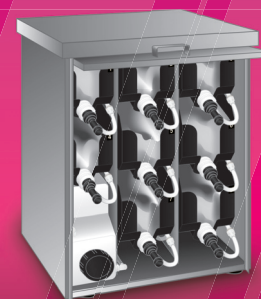
- Integrated 8-flavor cabinet designed to fit within the Taylor C201 cart (Taylor C201 cart sold separately)
- 2-gallon internal sanitizer tank

Fits inside the C206 Carts!



JBT 80FCB-3B-INT-2S

- Integrated 8-flavor cabinet designed to fit within the Taylor C206 mobile carts (Taylor C206 carts sold separately)
- 2-gallon external sanitizer tank



JBT 80FCB-3B-DLX

- Shorter, wider 8-flavor cabinet with sliding door front
- 2-gallon internal sanitizer tank
- External power supply mounted on the back panel
- Electronics Box size: 9.5 x 3.5 x 19 in (241 x 89 x 483 mm)

MODEL	CABINET DIMENSIONS width x height x depth	SANITIZER TANK DIMENSIONS width x height x depth	JUMBO TOUCH PANEL DIMENSIONS width x height x depth	BOXED DIM. CABINET & TANK width x height x depth	BOXED DIM. JUMBO TOUCH PANEL width x height x depth	TOTAL BOXED WEIGHT (2 BOXES)	TOTAL CRATED WEIGHT (2 BOXES)
JBT 80FCB-3B	9.75 x 31.375 x 27.25 in 248 x 797 x 692 mm	8.25 x 24 x 8.25 in 210 x 610 x 210 mm	22.5 x 13.75 x 4.5 in 572 x 349 x 121 mm	12 x 34.5 x 35 in 305 x 876 x 889 mm	28 x 24 x 10 in 711 x 610 x 254 mm	140 lbs 63.5 kg	173 lbs 78.5 kg
JBT 80FCB-3B-DLX	17 x 22.75 x 28.125 in 432 x 578 x 714 mm	N/A inside cabinet	(same)	26.5 x 29.25 x 18.75 in 674 x 743 x 477 mm	(same)	163 lbs 73.9 kg	196 lbs 88.9 kg
JBT 80FCB-3B-INT (Taylor cart not included)	14.375 x 18.25 x 27.5 in 365 x 464 x 699 mm	N/A inside cabinet	(same)	26.5 x 29.25 x 18.75 in 674 x 743 x 477 mm	(same)	130 lbs 57 kg	163 lbs 73.9 kg
JBT 80FCB-3B-INT-2S (Taylor cart not included)	19.5 x 13.25 x 24.5 in 496 x 337 x 623 mm	6 x 7.5 x 19 in 152 x 191 x 483 mm	(same)	21.5 x 21.25 x 26.75 in 546 x 540 x 680 mm	(same)	119 lbs 54 kg	152 lbs 68.9 kg
ELECTRICAL		115V 50/60Hz (230V 50/60Hz)		MINIMUM CIRCUIT AMP DRAW TOTAL		1 amp (0.5 amp)	