

Flavor Burst™

432 Mix & Match Transparencies

Installation

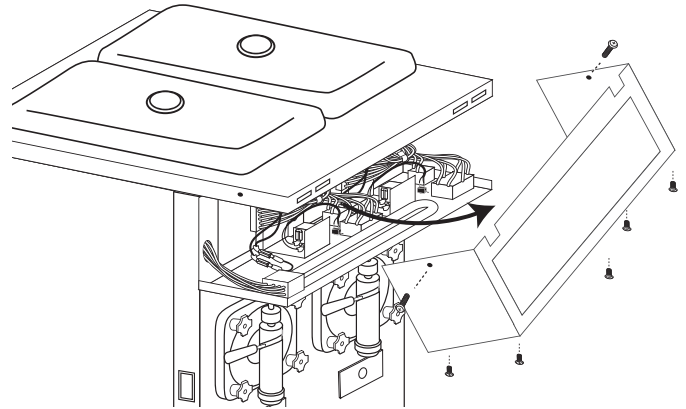
Several transparencies are available for the Taylor® 432 model to accommodate multiple Flavor Burst™ product lines. Complete the following procedure to install any combination of these mix & match transparencies available from your local distributor.



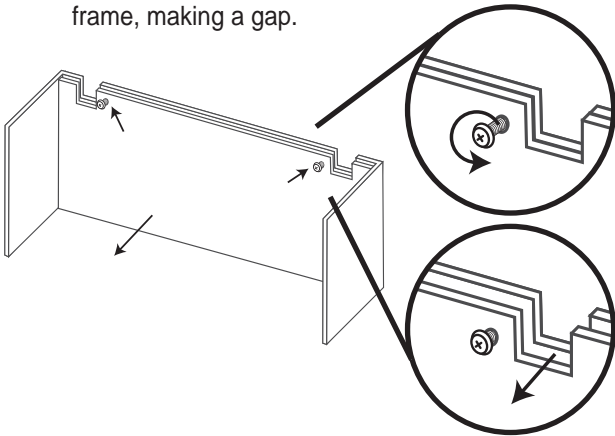
432 Mix & Match Transparencies:

MIS 6100D Soft-Serve Duratrans
 MIS 7041D Nice Ice Duratrans (shown here)
 MIS 8012D Frozen Cocktails Duratrans
 MIS 9020D JavaLatte Duratrans

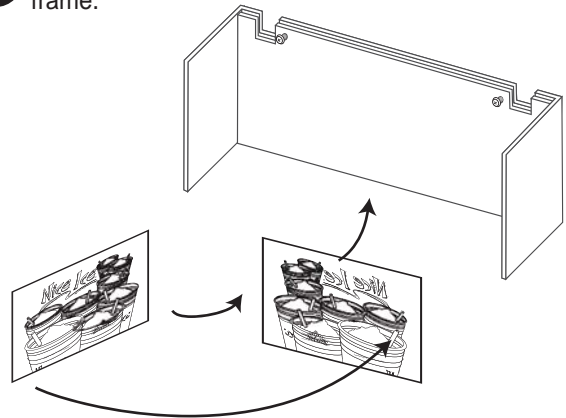
- 1 Remove the display panel by removing the 2 side screws and the 5 bottom screws.



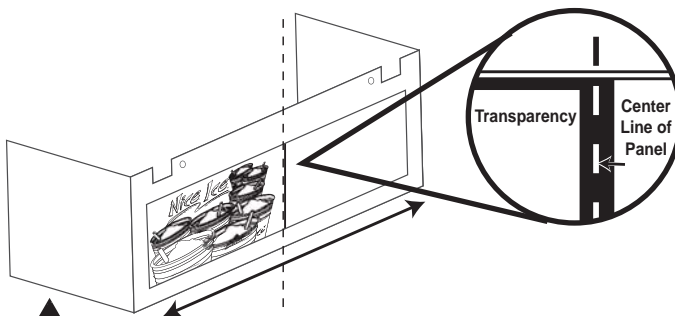
- 2 Loosen the two screws in the back of the display panel, then carefully pull the backing away from the display frame, making a gap.



- 3 Slip the trans up between the backing and the display frame.



- 4 Determine which side the transparency is to be displayed, and then slide it to either side.



NOTE: TRANSPARENCIES SHOULD OVERLAP THE CENTER LINE TO PROVIDE A CLEAN PRESENTATION IN THE FINISHED DISPLAY.

- 5 Replace the display panel and secure the screws to complete the installation.

