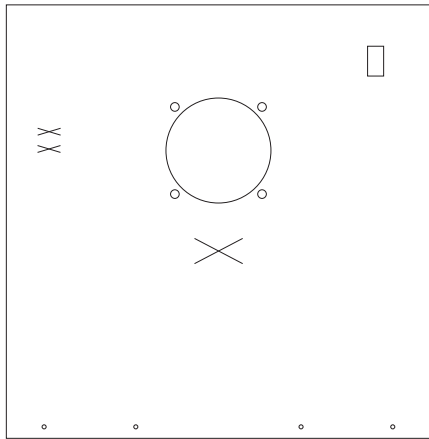


Flavor Burst™

POP 430 Wrap 3Kit

Setup and Installation



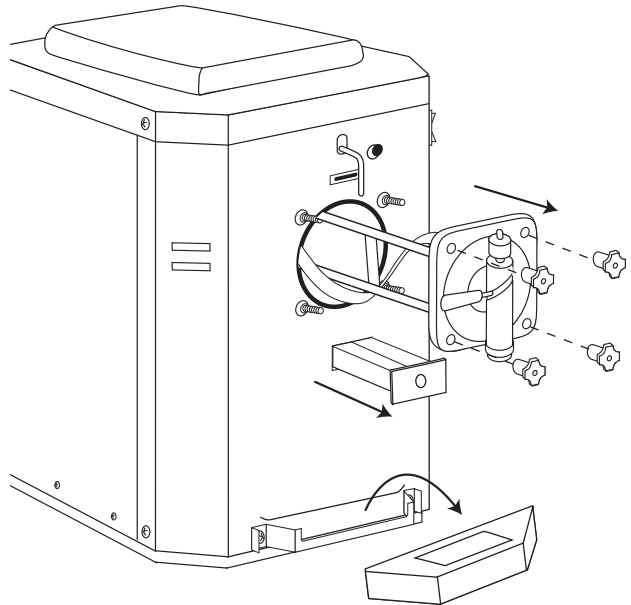
430 Wraps:

- POP 7052 Blue Shake Combo Wrap
- POP 6094 Yellow Shake Break Wrap
- POP 7040 Nice Ice Wrap
- POP 9013 JavaLatte Wrap
- POP 8011 Frozen Cocktail Wrap
- POP 7513 Smoothie Wrap

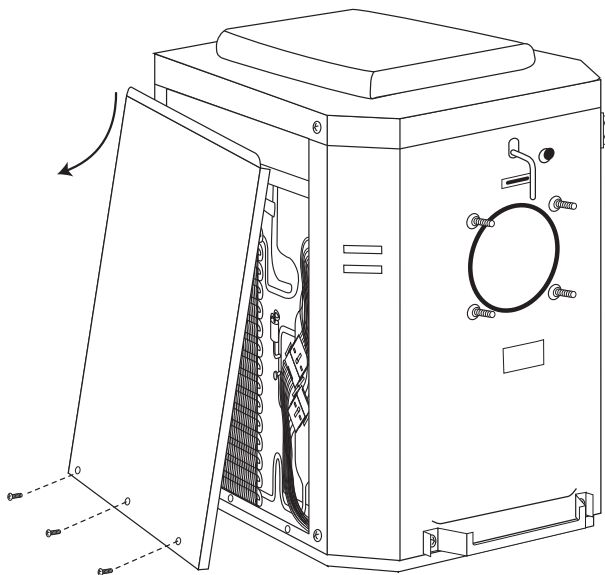


NOTE: BE SURE THE ENTIRE SURFACE OF THE PANEL FACE IS CLEAN BEFORE INSTALLING THE WRAP.

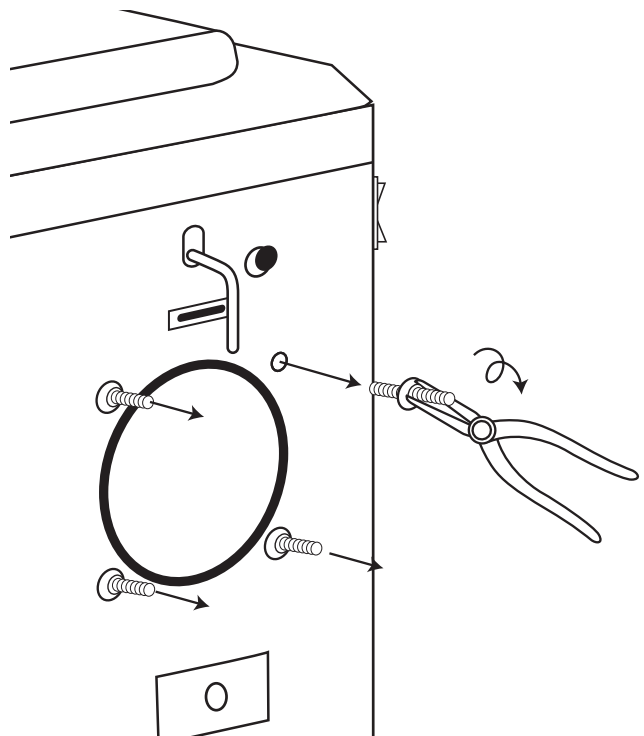
- 1** Remove the freezer head, tray and drip tray from the freezer.



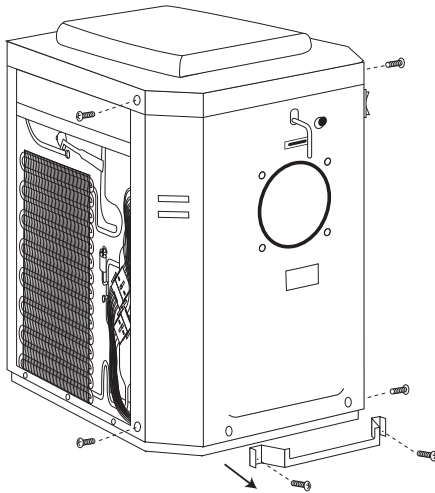
- 2** Remove each side panel by removing the three screws at the bottom of each panel.



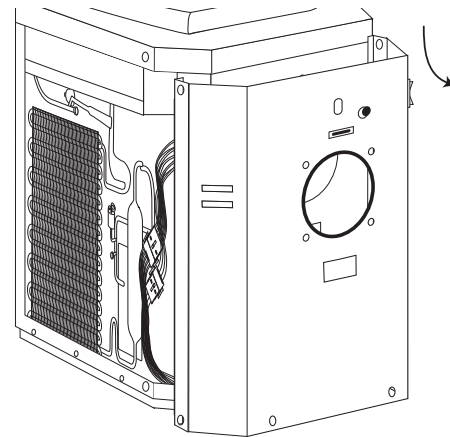
- 3** Using needle-nose pliers, remove the four screw pins from the freezer.



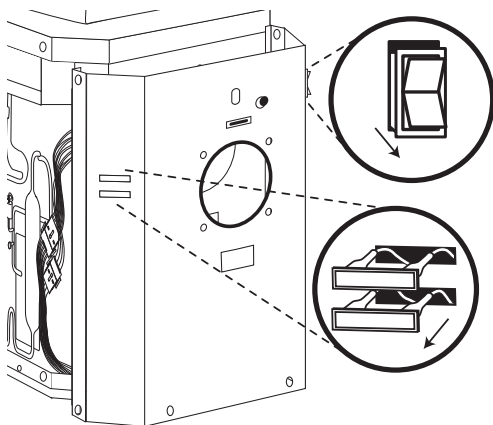
- 4** Unscrew and remove the tray bracket. Remove the freezer face screws located at the top and bottom of each side, near the side panel opening.



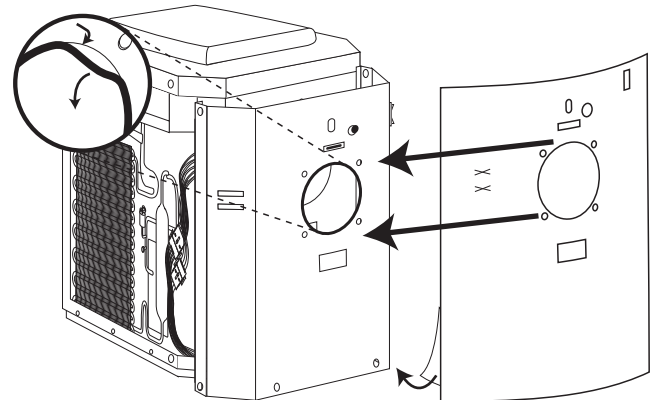
- 5** Remove the freezer face by carefully sliding it down and away, taking special note of the adjustment bolt. The face should remain attached to the freezer by wires. Set the face panel upright just in front of the freezer.



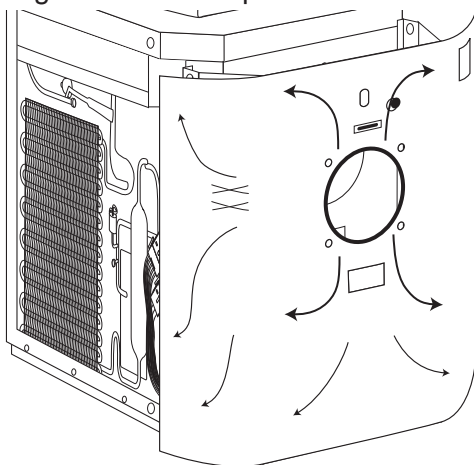
- 6** Loosen the two light buttons and the power switch from the panel. Disconnection is not necessary.



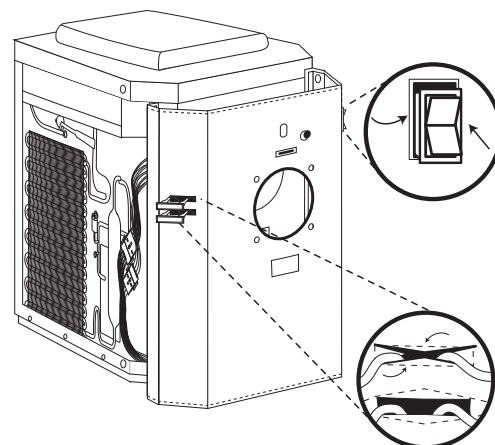
- 7** Remove the wrap backing and line up the large and small circular holes with the corresponding ones on the freezer. Roll back the black seal on the panel for the wrap to line up properly with the larger hole. Secure only this area by pressing firmly.



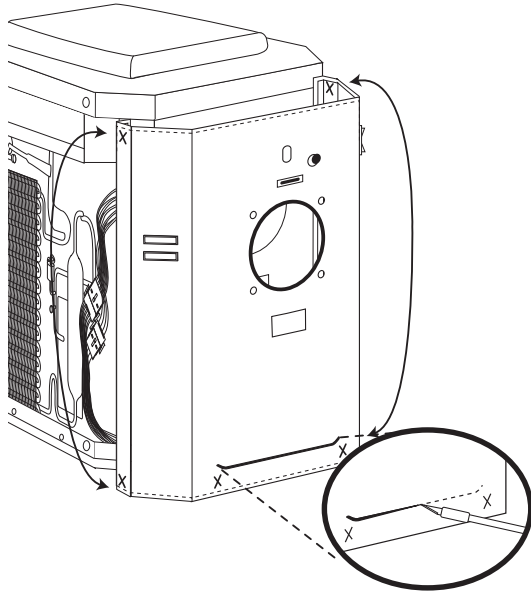
- 8** Press the rest of the wrap to the freezer in an outward motion from the center circle to the edges, pushing out any air pockets. The entire front panel should be secured before moving on to the side panels.



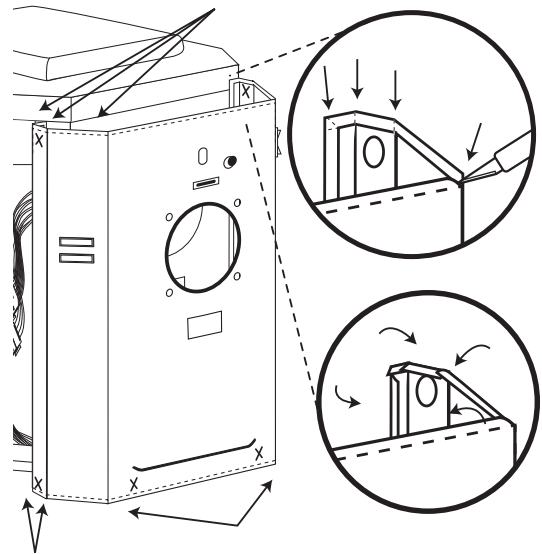
- 9** Line up the wrap with the panel underneath the power switch. Pull the two side light buttons through the "X" slits on the wrap, and fold the flaps to the inside of the panel.



- 10** Cut a slit in the wrap where the tray lip protrudes and press the wrap firmly into place. Cut slits for the screws at the bottom and sides of the panel.



- 11** Make incisions where the wrap hangs over the panel corners and fold the wrap edges over onto the back. Press firmly into place.



- 14** Reassemble the freezer in the reverse order it was disassembled to complete the assembly.

