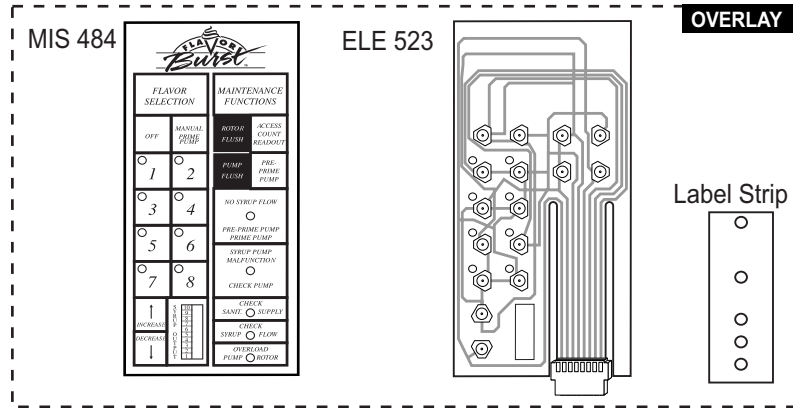


# Flavor Burst®

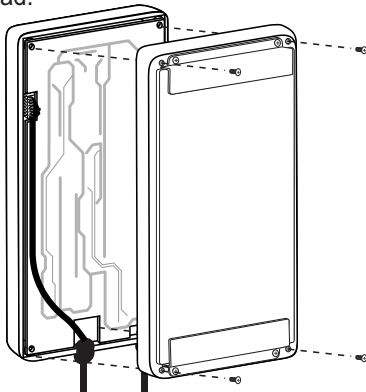
## OVERLAY Keypad Label Replacement Kit

### Assembly and Installation

The OVERLAY set replaces the keypad labels and switch membrane to improve the performance of the keypad. Use the following instructions to remove the old keypad labels and switch membrane and install this updated set. For more information, contact your local distributor.

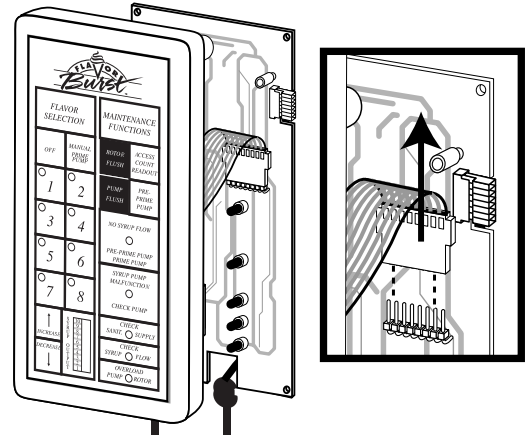


- 1 Loosen the outer screws and remove the back cover of the keypad.

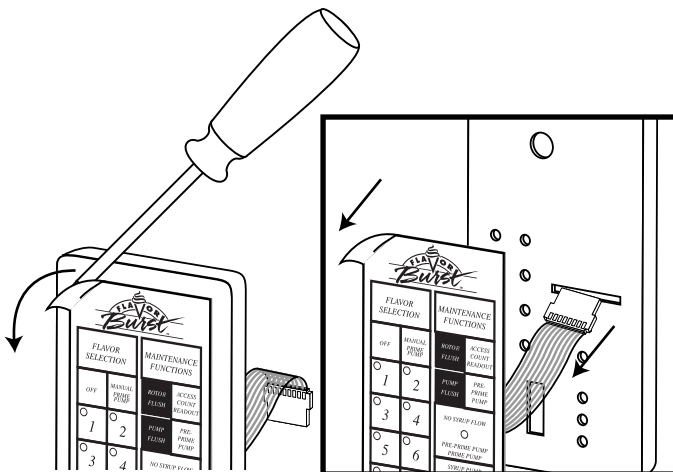


**NOTE:** IF THE KEYPAD BRACKETS ARE COVERING THE SCREW HOLES, REMOVE THE BRACKETS FIRST AND THEN REMOVE THE KEYPAD SCREWS.

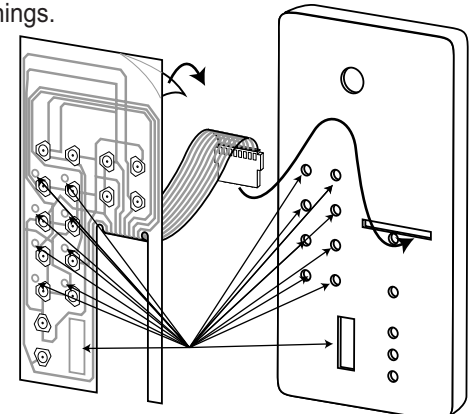
- 2 Carefully disconnect the electronics board from the electrical ribbon and set it aside.



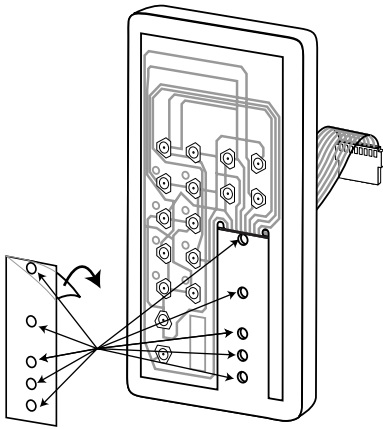
- 3 Use a flat head screwdriver to peel off a corner of the keypad label, then carefully remove the whole label and the switch membrane with ribbon behind it.



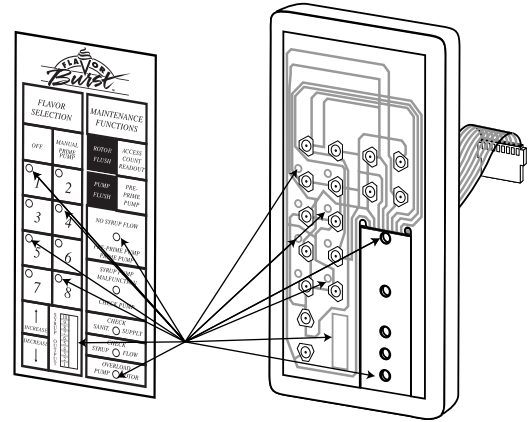
- 4 Remove the protective tape from the back of the ELE 523 switch membrane. Insert the ribbon into the slot on the keypad and affix the switch membrane to the keypad face. First ensure the rectangular opening on the switch membrane lines up with the opening on the keypad and then line up the 8 circles with the keypad's circular openings.



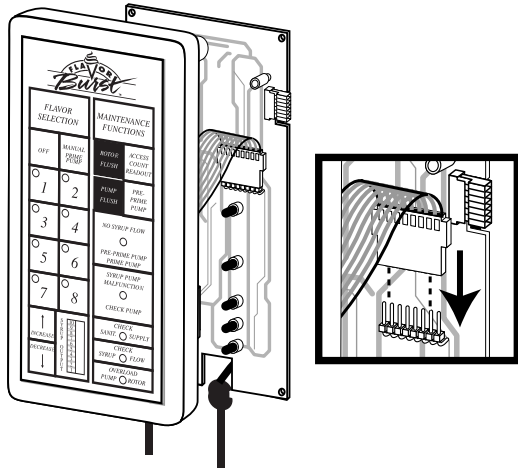
- 5** Remove the protective tape from the back of the small label strip and affix it to the exposed section of the keypad face under the ribbon slot. Ensure the circles on the label strip line up with the keypad panel's circular openings.



- 6** Remove the protective tape from the back of the keypad label and affix it to the face of the keypad face on top of the switch membrane. Ensure the transparent windows of the label line up with the keypad panel's openings.



- 7** Carefully connect the electrical ribbon to the plug on the electronics board.



- 8** Line up the screw holes of the front cover, the electronics board and the back cover and secure them together with the screws. If the keypad brackets were removed, install them to the back of the keypad to complete the assembly.

