

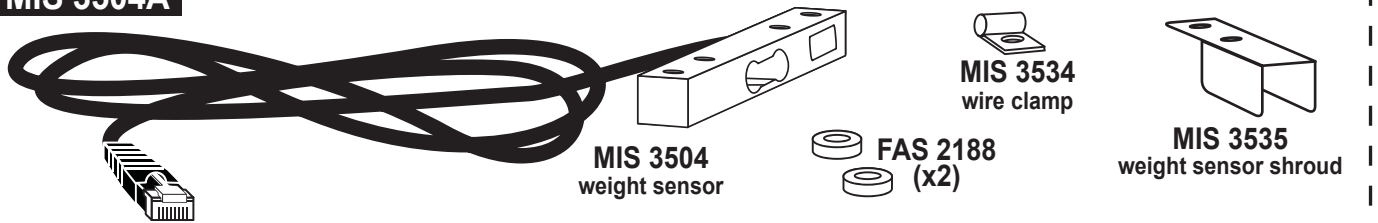
Flavor Burst™

MIS 3504A Load Cell Weight Sensor Kit

Installation

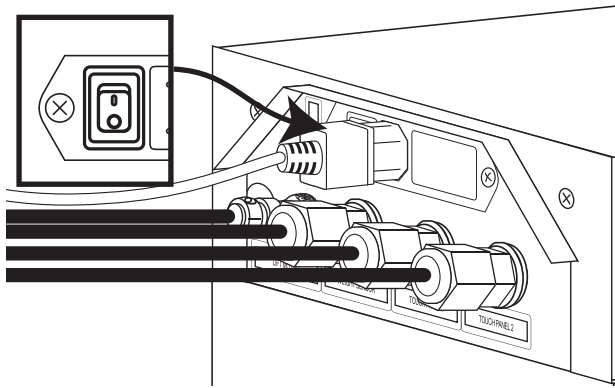
The MIS 3504A Load Cell Weight Sensor Kit is designed to replace the load sensor inside the Door Assembly of a CTP 80SNS-R or CTP 80SNS-L system. The new design reinforces the cable connection at the load cell to prevent it from pulling away from the cell and exposing sensitive wiring. Follow these procedures to install the new load cell in your unit.

MIS 3504A

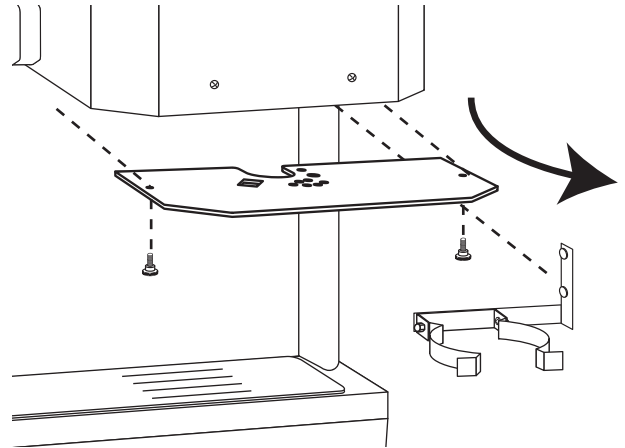


NOTE: DO NOT USE THE WEIGHT SENSOR, ARM, OR CUP HOLDER AS A HANDLE WHEN OPENING, CLOSING, OR MOVING THE FACADE DOOR.

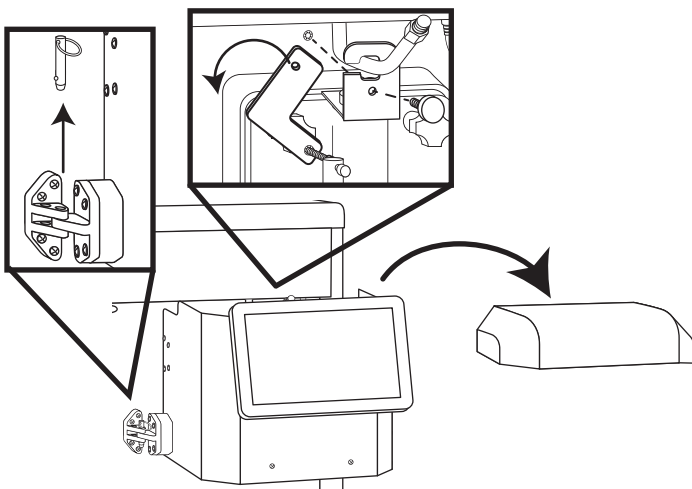
- 1 Power down the Touch Panel and then turn off the system at the back of the cabinet.



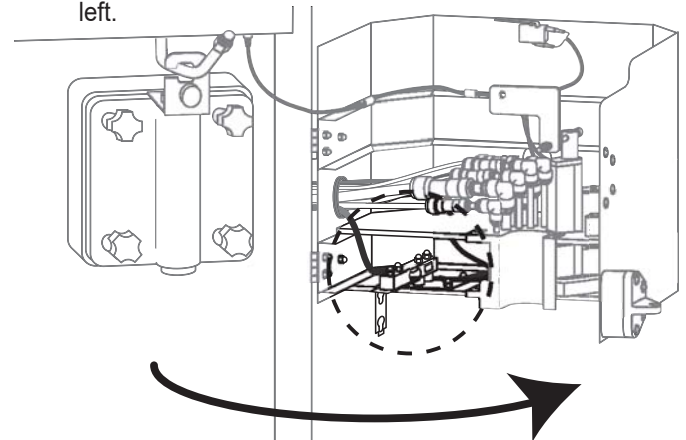
- 2 Remove the cup holder and the lower splash guard from the Door Assembly.



- 3 Open the Door Assembly by removing the lid, removing the latch pin, and disconnecting the lift bracket.

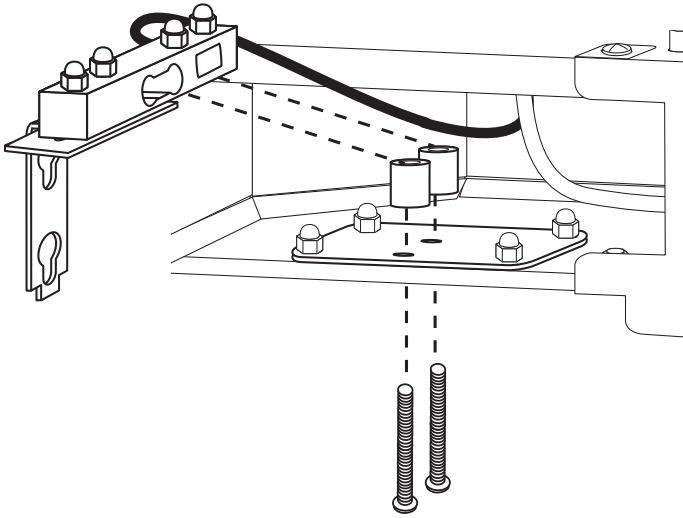


- 4 Swing the Door Assembly open and locate the load cell (weight sensor), attached to a mount plate at the lower left.

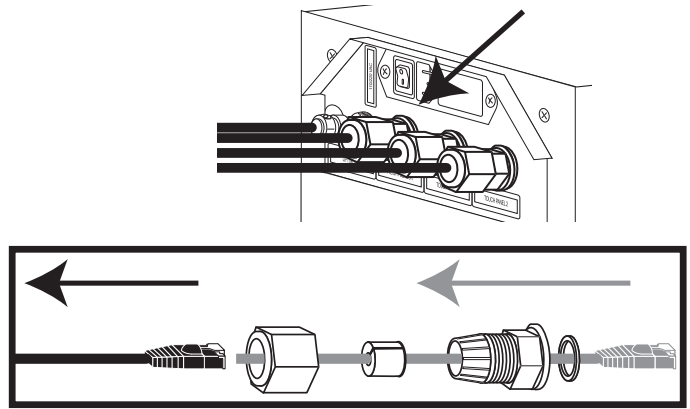


NOTE: THE LOAD CELL ON A CTP 80SNS-L SYSTEM WILL BE LOCATED AT THE LOWER RIGHT INSIDE THE DOOR ASSEMBLY.

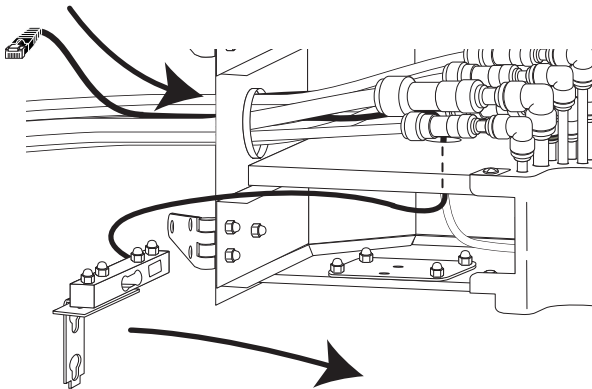
- 5** Remove the 2 screws and cap nuts holding the load cell to the mount plate. Remove the two spacers.



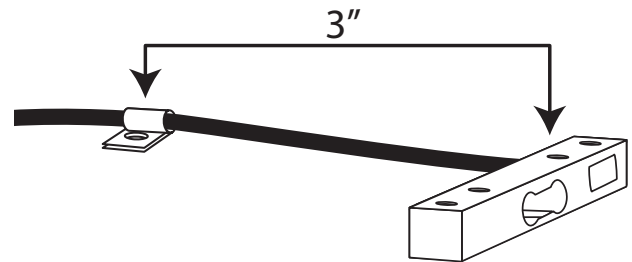
- 6** Disconnect the gland at the back of the cabinet labeled "WEIGHT SENSOR". Remove the gland from the cable.



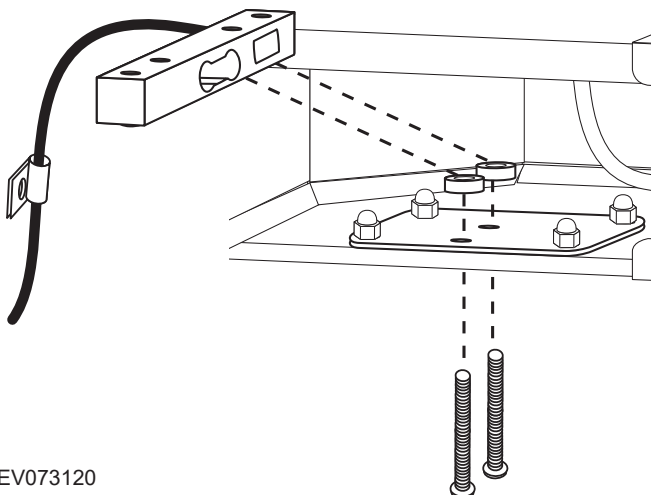
- 7** Thread the end of the cable through the Door Assembly facade hole and the plate hole behind the tubes. Remove the old load cell.



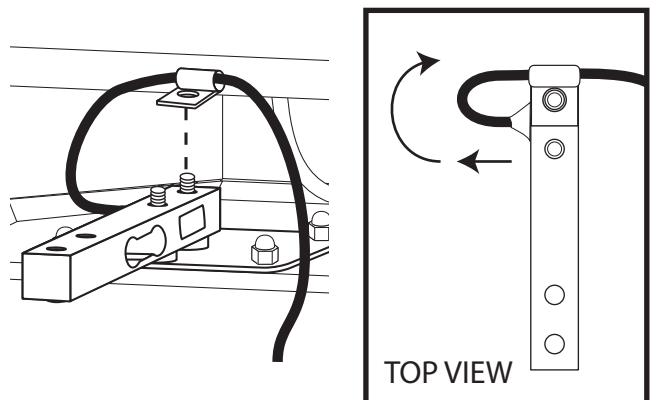
- 8** Attach the wire clamp around the wire of the new load cell approximately 3" from where the wire attaches to the load cell.



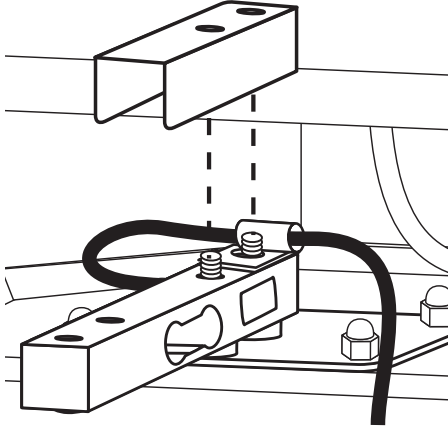
- 9** Using the two screws removed from the old load cell, thread the screws through the holes from underneath the Door Assembly and through the mount plate. Install the new (thin) spacer onto the screws. Then, install the new load cell onto the screws and spacers. Use the back holes nearest the cable, and position the load cell so that the cable to the far left side.



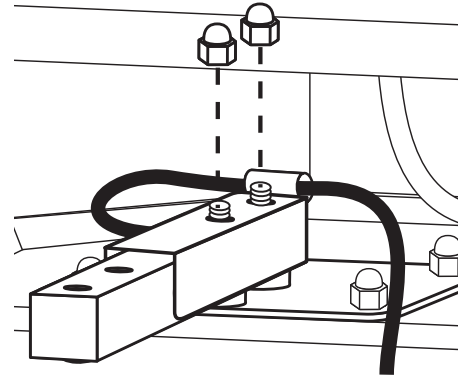
- 10** Install the wire clamp onto the furthest screw. Ensure the cable is perpendicular to the load cell where it is connected, and then curves around in a "U" shape.



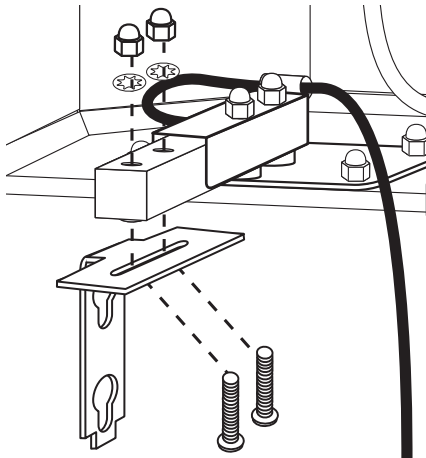
- 11** Install the weight sensor shroud onto the weight sensor.



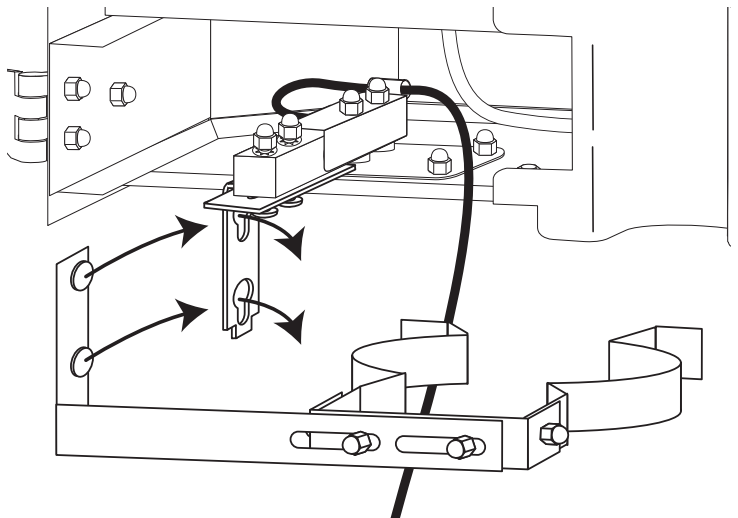
- 12** Install the cap nuts on the two screw posts and tighten.



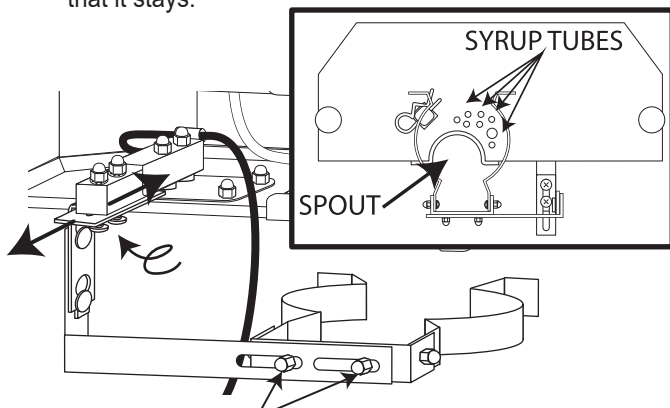
- 13** Remove the cup holder arm bracket with hardware from the old load cell. Install it on the new load cell in the same way, but do not tighten the screws all the way. The bracket should be able to slide back and forth for the next couple of steps.



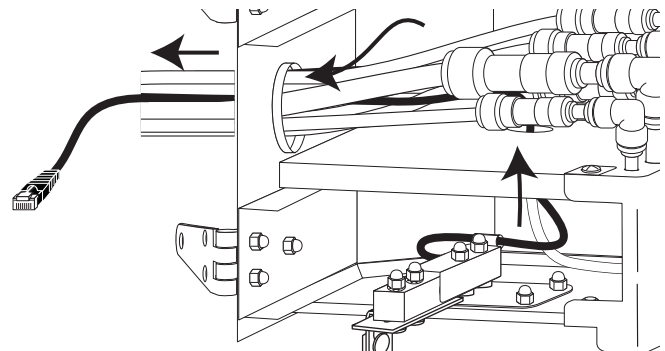
- 14** Hang the cup holder onto the bracket.



- 15** Slide the cup holder back and forth until the opening where the cup sits encompasses the spout opening as well as all the syrup holes. Once the assembly is in the correct position, tighten all the screws and cap nuts so that it stays.

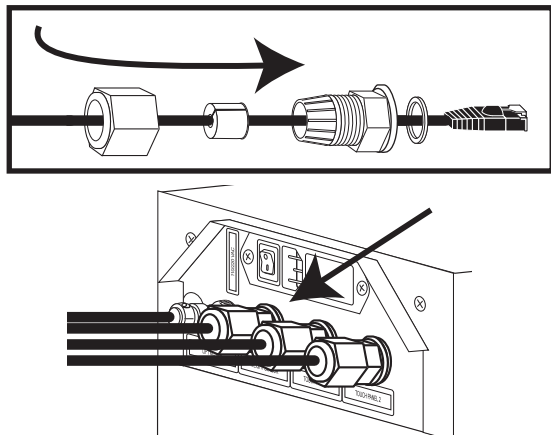


- 16** Feed the load cell cable through top panel hole behind the tube connectors and through the side hole of the Door Assembly. Attach the gland to the end of the cable.

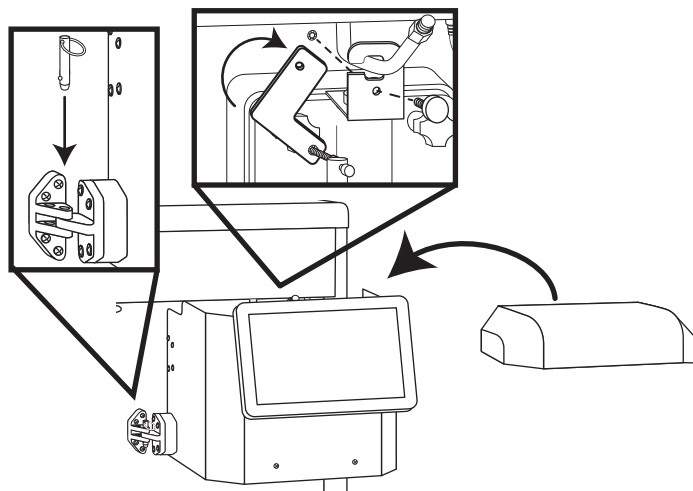


NOTE: THE NUTS ON THE CUP HOLDER ARM CAN BE LOOSENED IF IT IS NECESSARY TO ADJUST THE CUP HOLDER'S POSITION LEFT OR RIGHT.

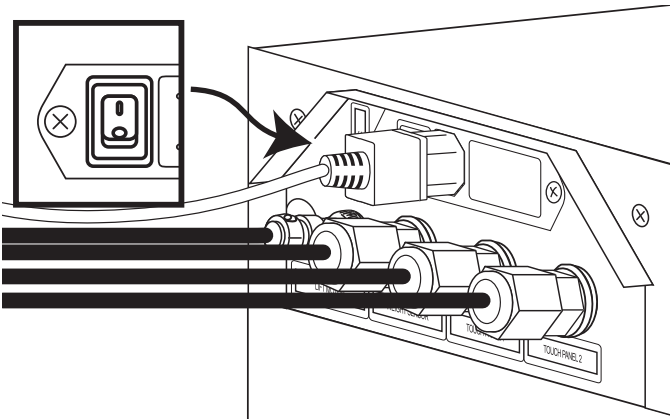
- 17** Attach the cable and gland to the “WEIGHT SENSOR” connection at the back of the cabinet.



- 18** Close the Door Assembly, lock the latch with the pin, attach the lift bracket to the draw bracket, and place the lid back on the Door Assembly.



- 19** Turn on the system at the back of the cabinet. The Touch Panel should automatically turn on.



- 20** The system will have to be recalibrated in order to function properly. Go to the Maintenance Menu of the Touch Panel and perform the steps in the “System Calibration” section.

