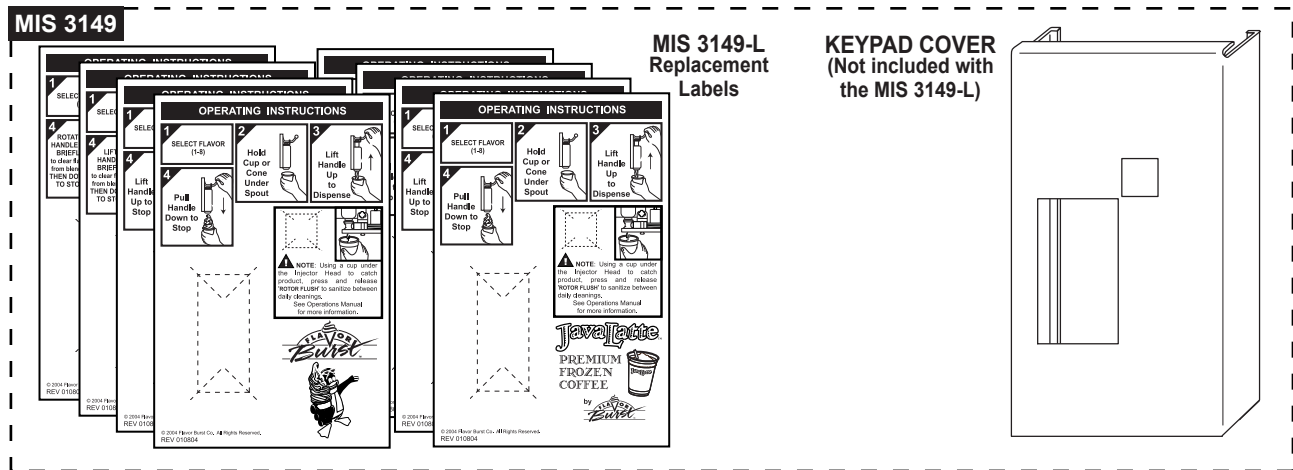


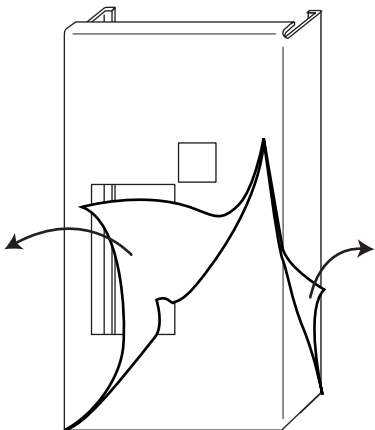
# Flavor Burst™

## MIS 3149 Keypad Cover Kit Assembly and Installation

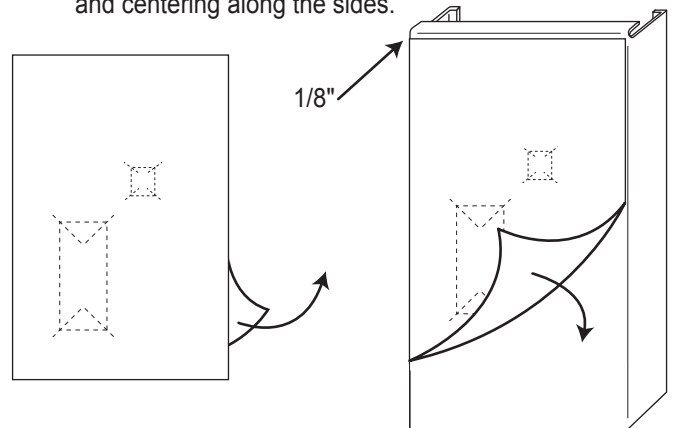
The MIS 3149 Keypad Cover Kit includes the stainless Keypad Cover (similar to the MIS 3049 Keypad Cover with additional Rotor Flush access) and 8 label versions for quick reference for use with the Keypad Cover: 1 soft-serve draw handle, 1 soft serve lift handle, 1 shake draw handle, 1 shake lift handle, 1 frozen coffee draw handle, 1 frozen coffee lift handle, 1 slush draw handle, and 1 slush lift handle. Apply the appropriate label as follows:



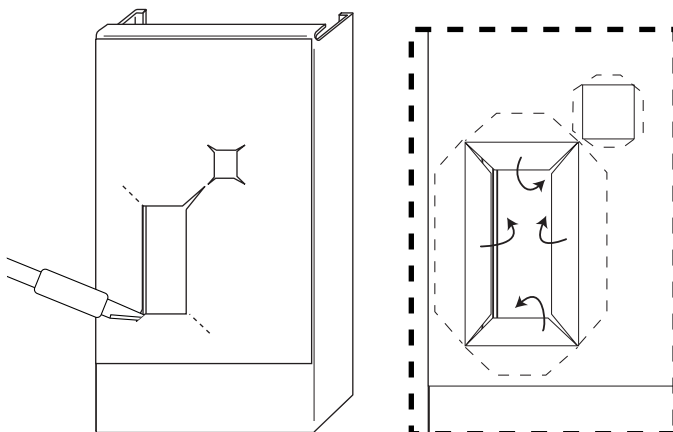
- 1 Peel the protective covering from the Keypad Cover and clean the surface before applying the label.



- 2 Remove the protective backing and apply the label to the Keypad Cover approximately 1/8" from the top edge and centering along the sides.



- 3 Cut along the dotted lines as shown and fold the edges of the label to the inside of the Keypad Cover openings.



- 4 Slide the Keypad Cover over the Keypad to complete the assembly.

