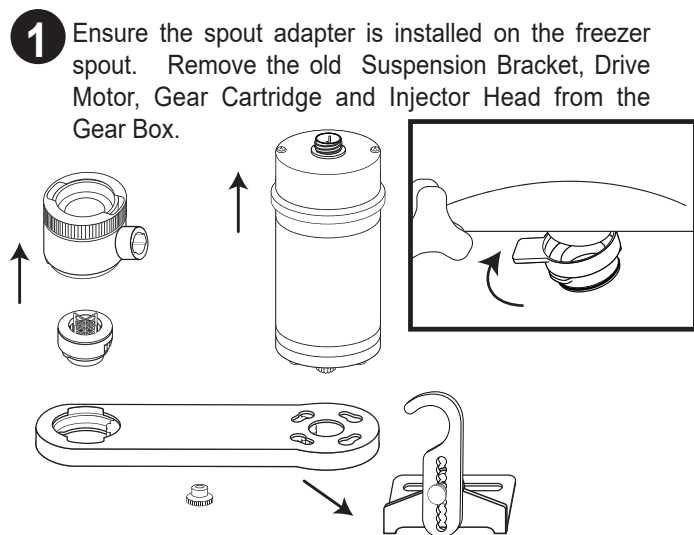
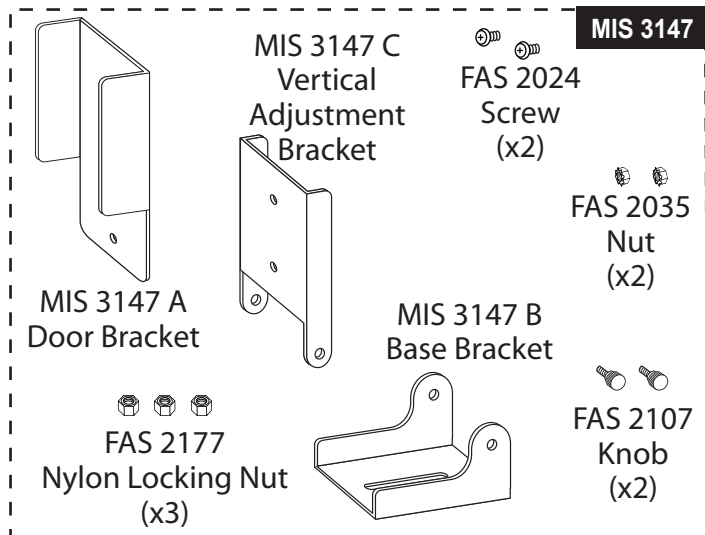


# Flavor Burst®

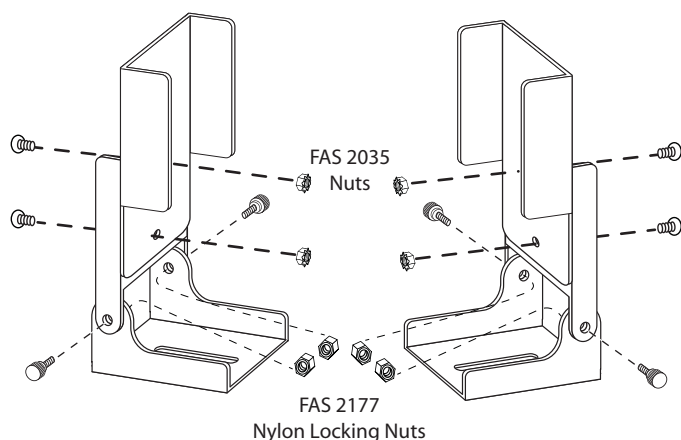
## MIS 3147 C706/707/708/709 Suspension Bracket

### Assembly and Installation

The MIS 3147 Suspension Bracket is compatible with the Taylor C706, C707, C708, and C709 freezers. It is designed to support the heavier motors and offer more stable and secure support for the Injector Assembly than the universal suspension bracket. For more information, contact your local distributor.



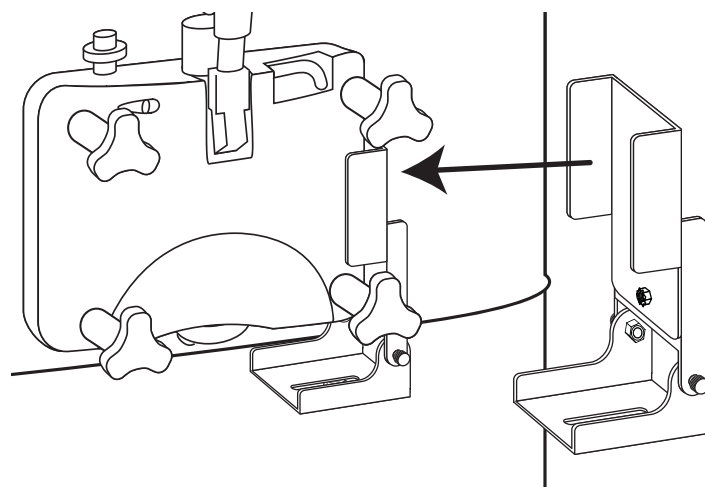
**2** Determine to which side of the freezer the suspension bracket will be mounted. Assemble the bracket as shown. Only tighten the screws, nuts or knobs enough to hold the assembly together but are able to move the bracket parts.



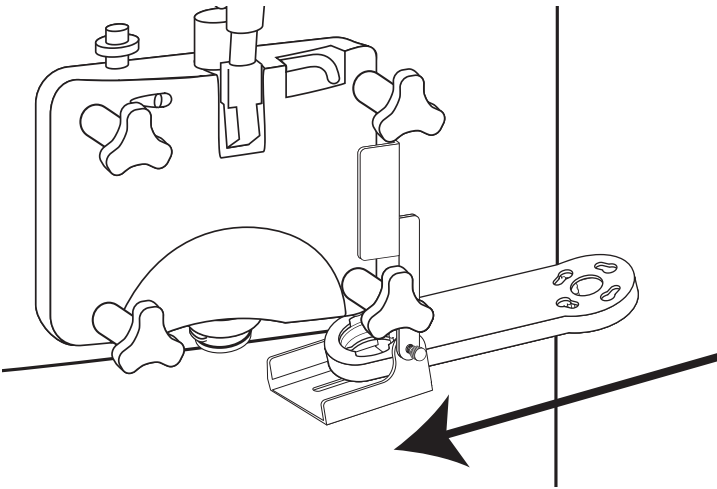
LEFT SIDE MOUNTING

RIGHT SIDE MOUNTING

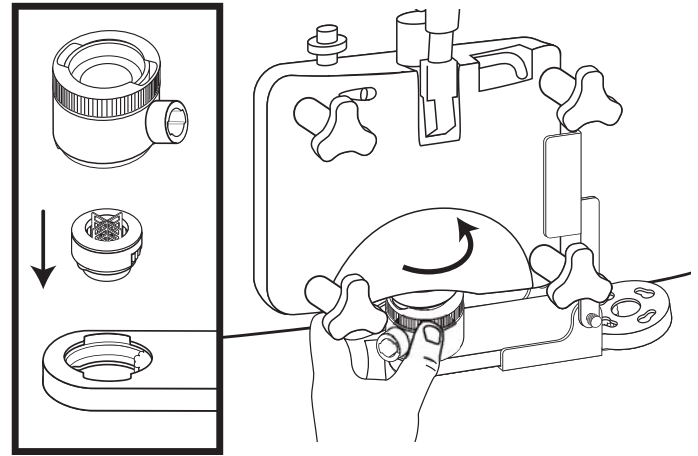
**3** Slide the Door Bracket in between the freezer door and the freezer panel.



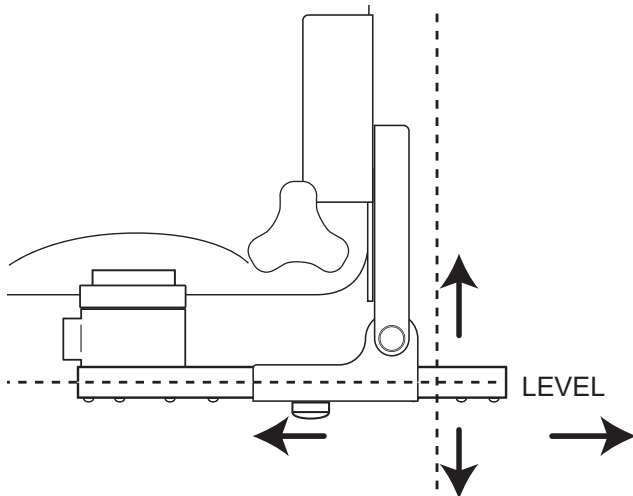
- 4** Slide the Gear Box through the Suspension Bracket so that the threaded post underneath the box sits in the Bracket Base's slot.



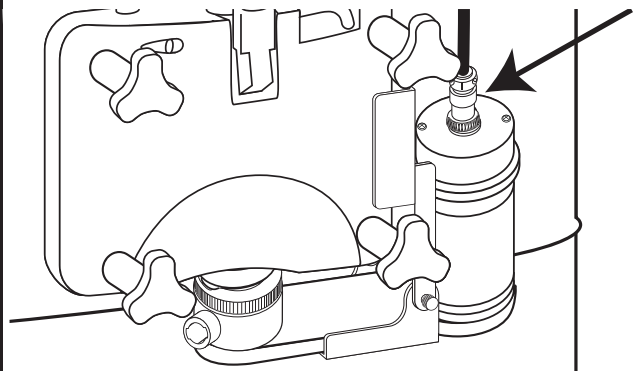
- 5** Install the Gear Cartridge and Injector Head onto the Gear Box and rotate the head to lock it in. Then attach the Injector Head to the spout adapter, rotating the metal ring over the adapter tabs to secure it.



- 6** Position the bracket so that it is in-line vertically and horizontally and the Gear Box is level. Tighten the knobs, screws and nuts to that the assembly is secure. Install the Gear Box thumb nut underneath the Gear Box.



- 7** Install the Drive Motor onto the Gear Box and connect it to the Drive Motor Cable to complete the assembly.



**NOTE:** TO REMOVE THE INJECTOR ASSEMBLY, LOOSEN THE GEAR BOX'S BOTTOM KNOB, REMOVE THE INJECTOR HEAD FROM THE SPOUT AND GEAR BOX, AND THEN LIFT AND SLIDE THE GEAR BOX ASSEMBLY OUT OF THE SUSPENSION BRACKET.

### OPTIONAL

For a more secure, semi-permanent installation, replace the thumb knob from under the mounting bracket with the FAS 2177 locking nut. With the Blending Assembly in proper installed position on the freezer, tighten the locking nut with a 3/8" nut driver to secure the assembly. Daily cleaning of the Gear Box can be done with the mounting bracket attached.

