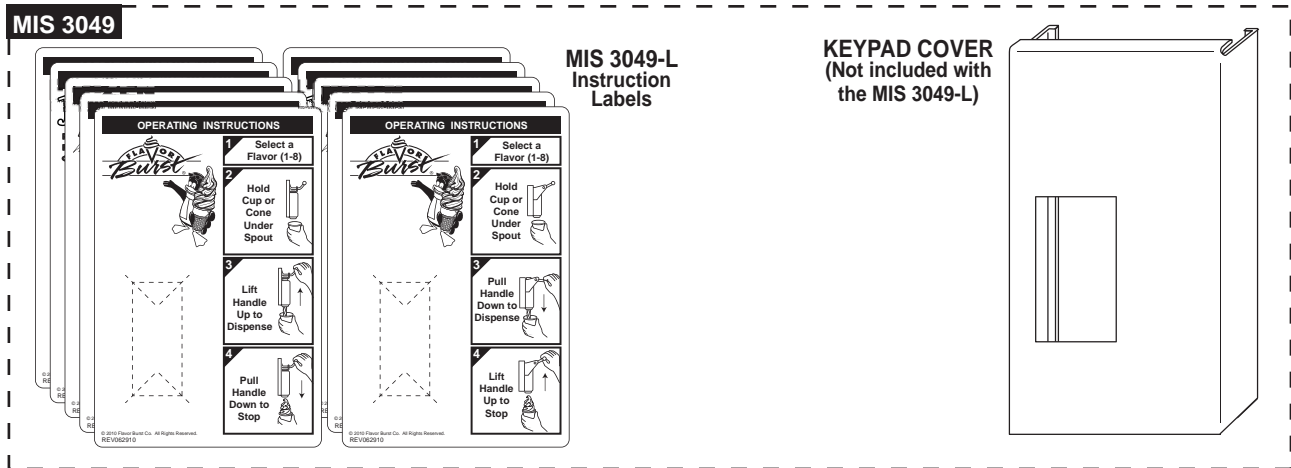


# Flavor Burst™

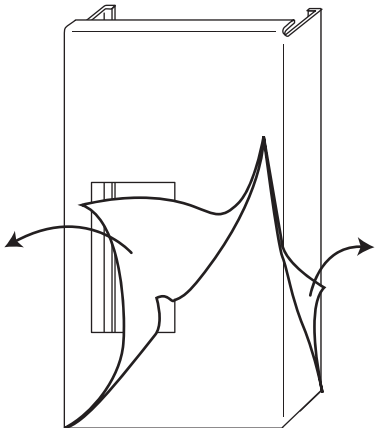
## MIS 3049 Keypad Cover Kit

### Assembly and Installation

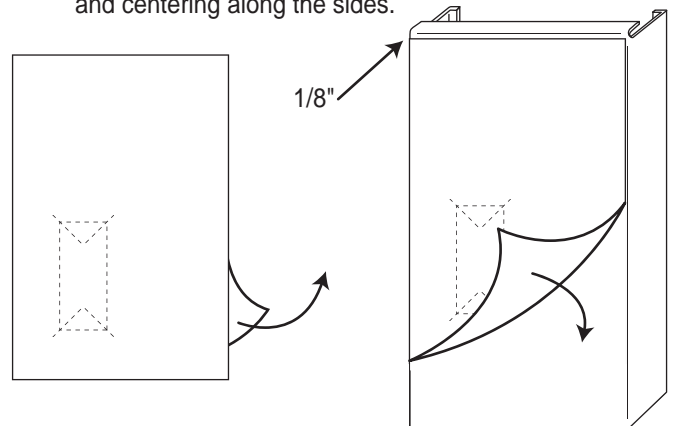
The MIS 3049 Keypad Cover Kit includes the stainless Keypad Cover and 10 label versions for quick reference for use with the Keypad Cover: 1 soft-serve draw handle, 1 soft serve lift handle, 1 shake draw handle, 1 shake lift handle, 1 frozen coffee draw handle, 1 frozen coffee lift handle, 1 slush draw handle, 1 slush lift handle, 1 FCB manual draw spout, and 1 FCB auto draw spout.. Apply the appropriate label as follows:



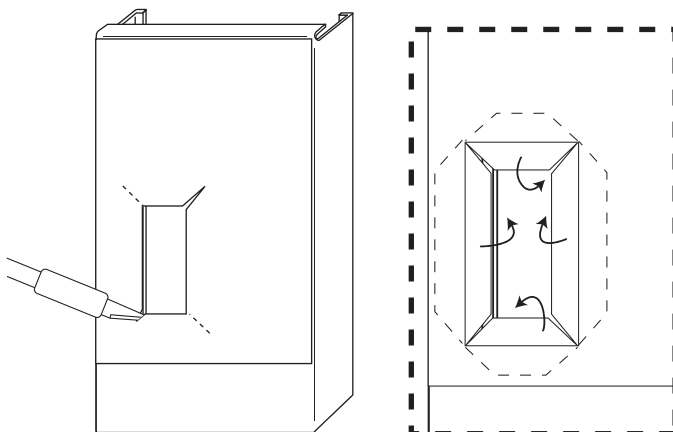
- 1 Peel the protective covering from the Keypad Cover and clean the surface before applying the label.



- 2 Remove the protective backing and apply the label to the Keypad Cover approximately 1/8" from the top edge and centering along the sides.



- 3 Cut along the dotted lines as shown and fold the edges of the label to the inside of the Keypad Cover openings.



- 4 Slide the Keypad Cover over the Keypad to complete the assembly.

