

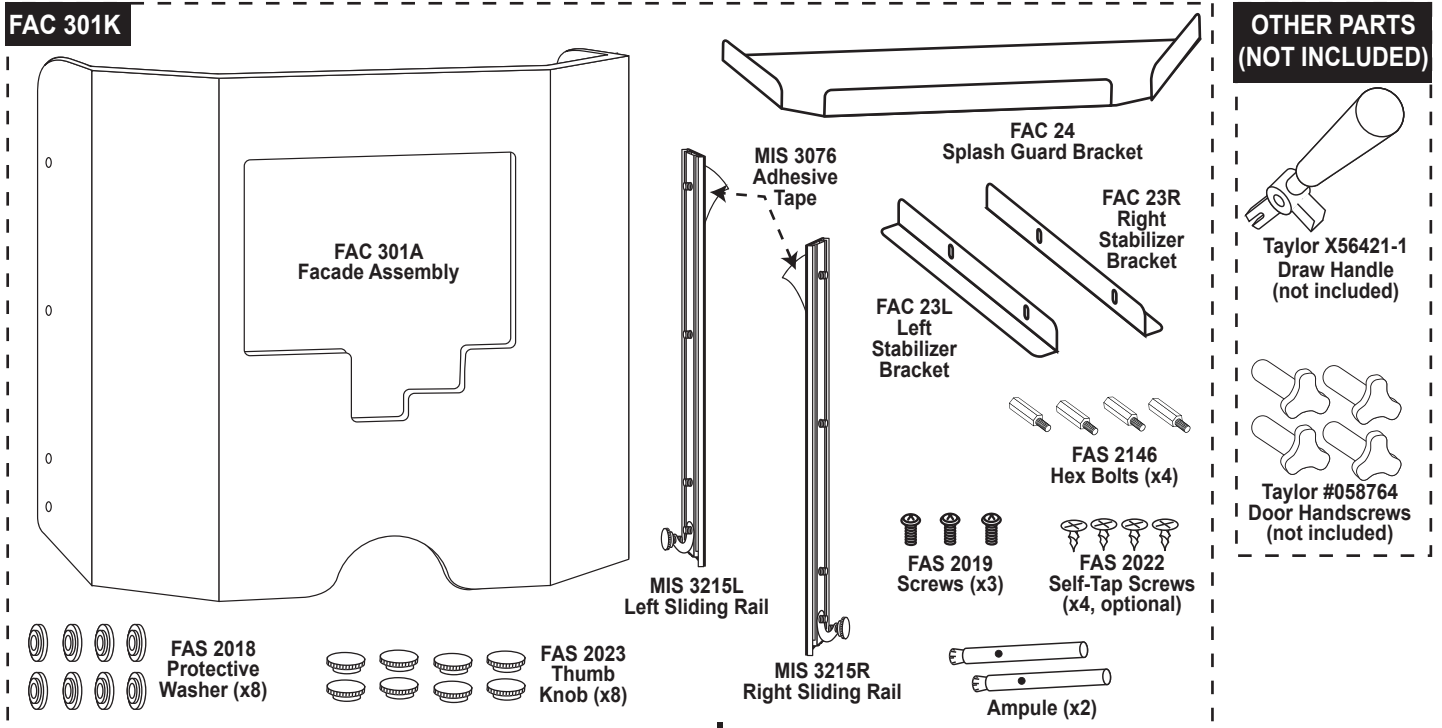
# Flavor Burst®

## FAC 301K

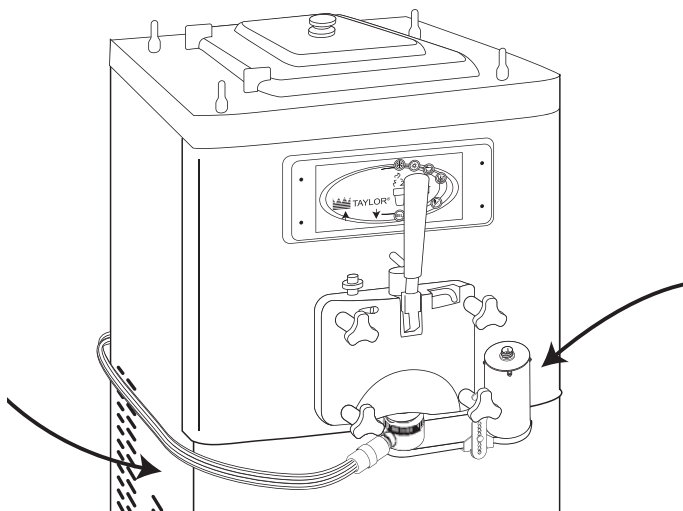
### Color Touch Panel Freezer Facade Kit for Taylor C706/707/708/709

#### Assembly and Installation

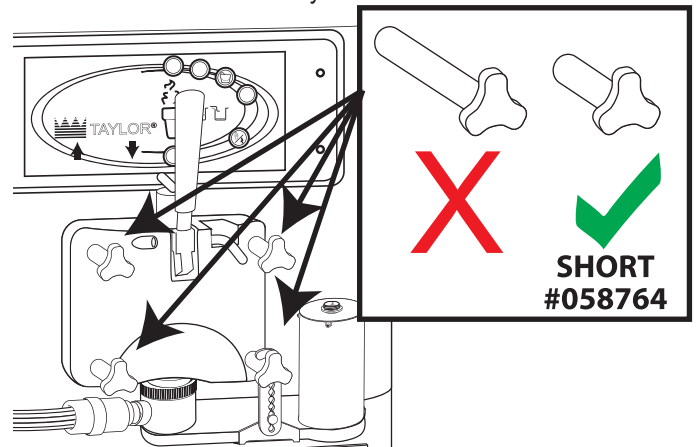
The freezer facade is designed to mask and cover the freezer's parts, cables and electronics that are not necessary for most daily operations. The Touch Panel is semi-integrated into the facade, so that it can also be removed for cleaning or accessing controls. This kit includes sliding rails, which allow the facade to be raised for access to the freezer hopper and door. The design allows for a larger flat surface to which a decorative wrap can be applied. This facade is designed for Taylor freezers C706/707/708/709, but requires a Taylor #X56421-1 draw handle and four Taylor #058764 Door Handscrews. Please contact your local distributor for more information.



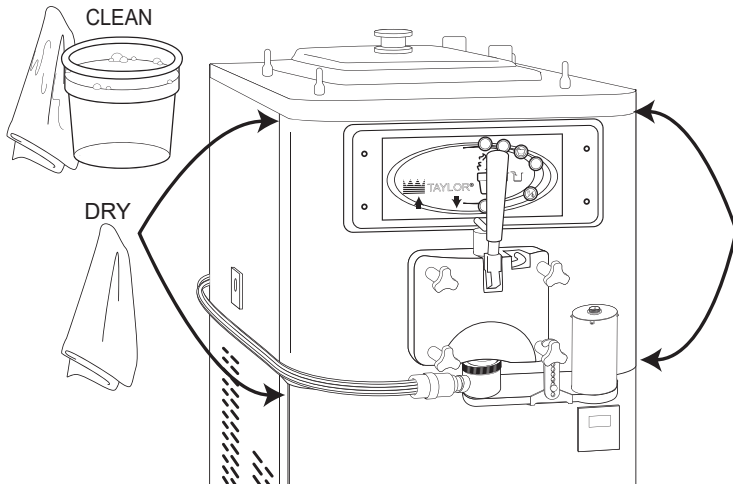
- 1 Install the Injector Assembly according to instructions in the Operations Manual.



- 2 Replace the four door handscrews with the shorter Taylor handscrews, part #058764 (sold separately). The standard handscrews are too long and will interfere with the facade assembly.

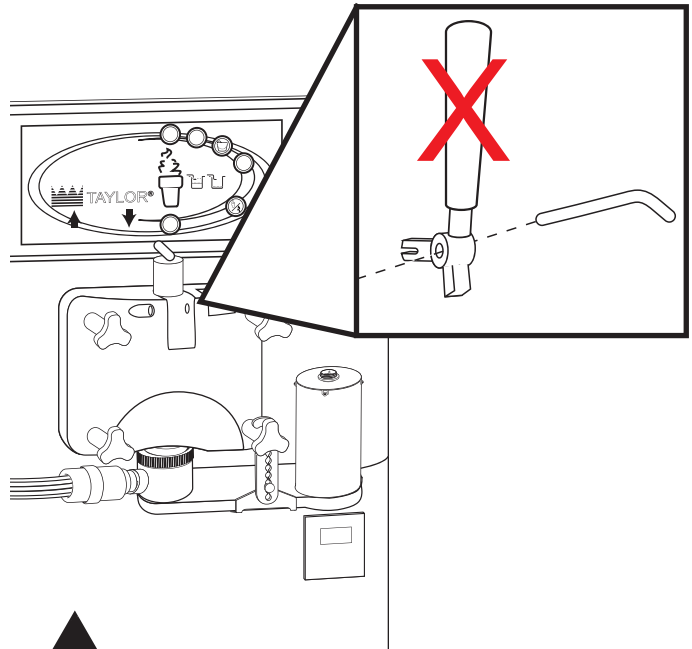


- 3** The sliding rails of the facade will be installed on each side of the freezer on the 1" strip of panel located from the corner of the front edge to the seam of the side panel. Thoroughly clean, rinse and dry this section on each side of the freezer.



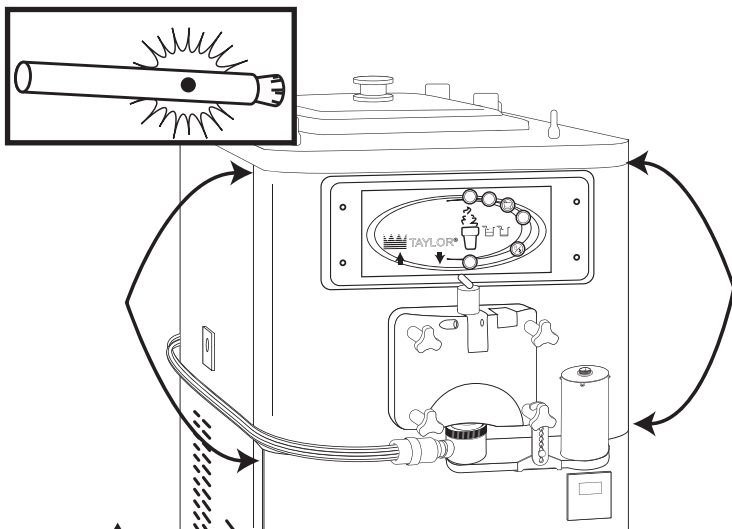
**NOTE:** THE FREEZER SURFACES MUST BE FREE OF ANY OILS OR RESIDUE OR THE ADHESIVE WILL NOT ADHERE PROPERLY.

- 4** Remove the draw pin and the draw handle from the freezer. The facade requires a Taylor #X56421-1 draw handle in order to be compatible with the facade, so that the draw handle extends outward from the facade, instead of upward.



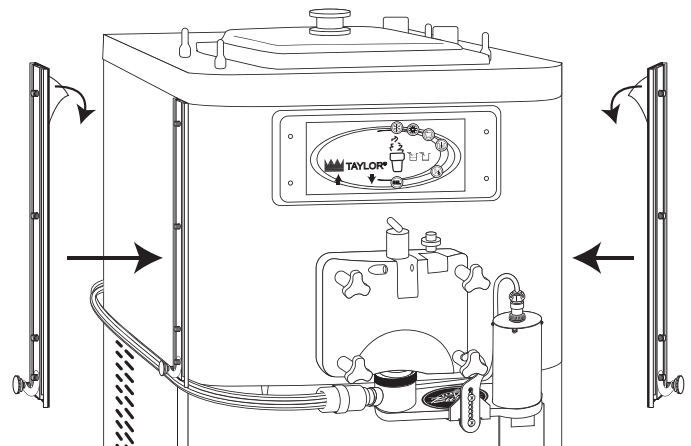
**NOTE:** THE NEW DRAW HANDLE WILL BE INSTALLED AFTER THE FACADE IS ATTACHED.

- 5** Pinch the primer ampule at the dot on the tube to release the primer fluid into the brush end. Apply the primer (acetone) to freezer area where the sliding rails will be attached. Allow the primer to dry completely before proceeding.

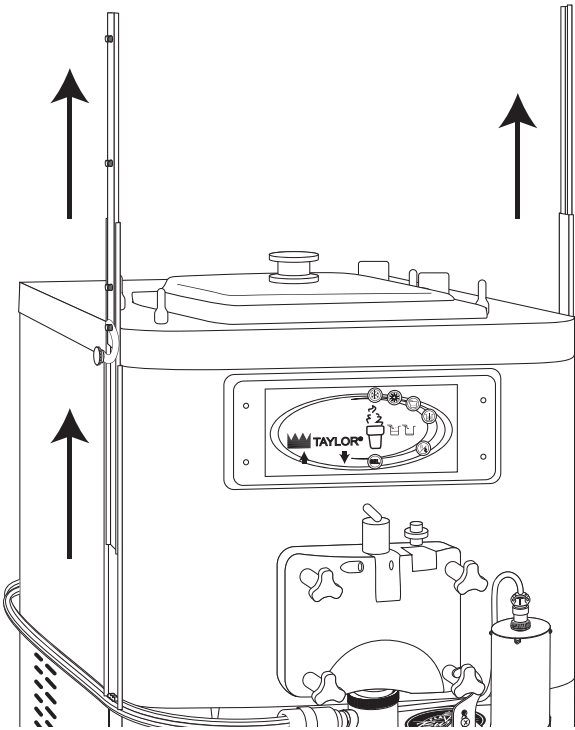


**NOTE:** LIQUID IN THE AMPULES IMPROVES ADHESION.

- 6** Remove the protective strip from the back of the left sliding rail and press the adhesive side against the primed area on the side of the freezer. The rail should fit just under the freezer cap and between the front corner and the side panel seam, with the locking arm at the bottom. Install the right sliding rail on the right side of the freezer.

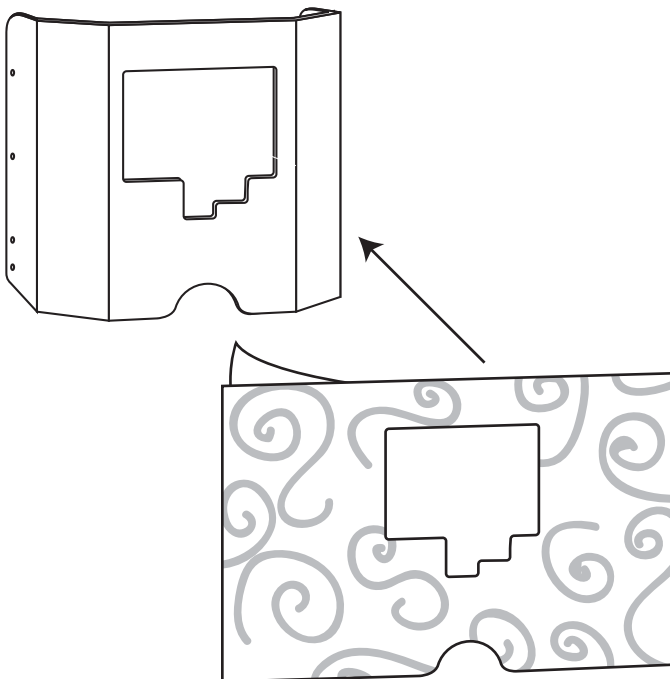


- 7** Test the rails by sliding them upward. Allow the adhesive of the rails to cure for at least 1 hour before proceeding.

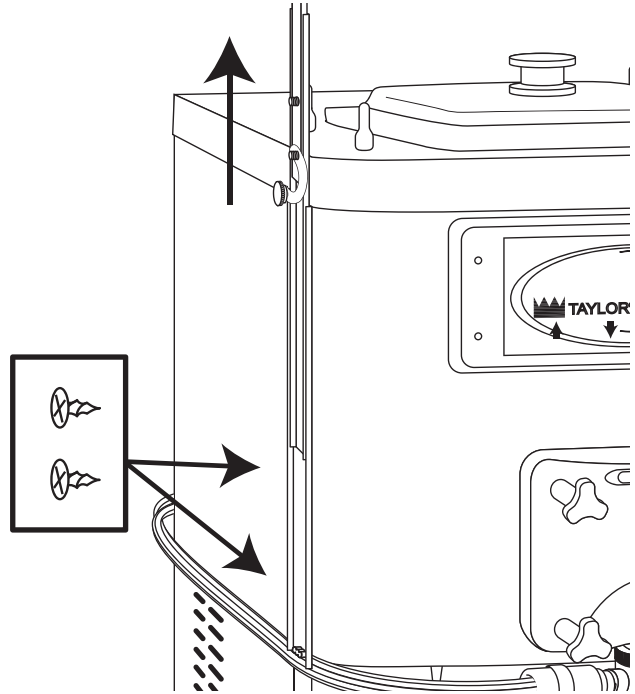


**WARNING:** DO NOT ADD THE FACADE OR ANY OTHER WEIGHT TO THE RAILS BEFORE THEY HAVE CURED FOR AT LEAST AN HOUR. DOING SO PULLS THE ADHESIVE STRIP FROM THE SURFACE AND IT WILL NOT ADHERE PROPERLY.

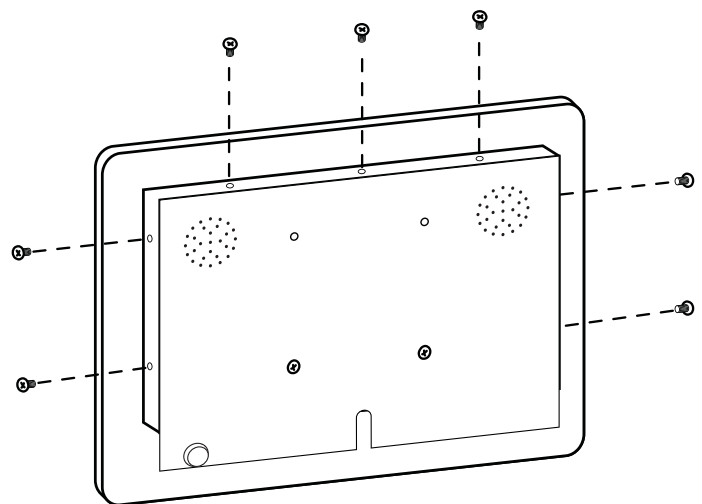
- 9** If you have a decal or wrap for the facade, apply it first before proceeding.



- 8** **OPTIONAL:** For a more secure installation, slide the rails upward and use the FAS 2022 self-tapping screws to secure the back plate of the rail directly to the freezer. Check with your Taylor technician for safe and exact placement of the screws to ensure they do not interfere with anything behind the panel.

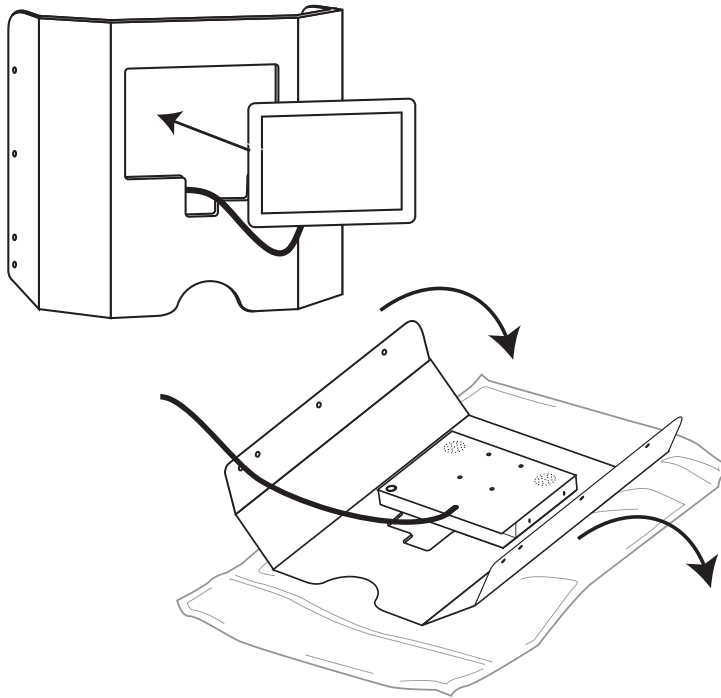


- 10** Remove the two screws from each side of the Touch Panel, and the three screws from the top of the panel.

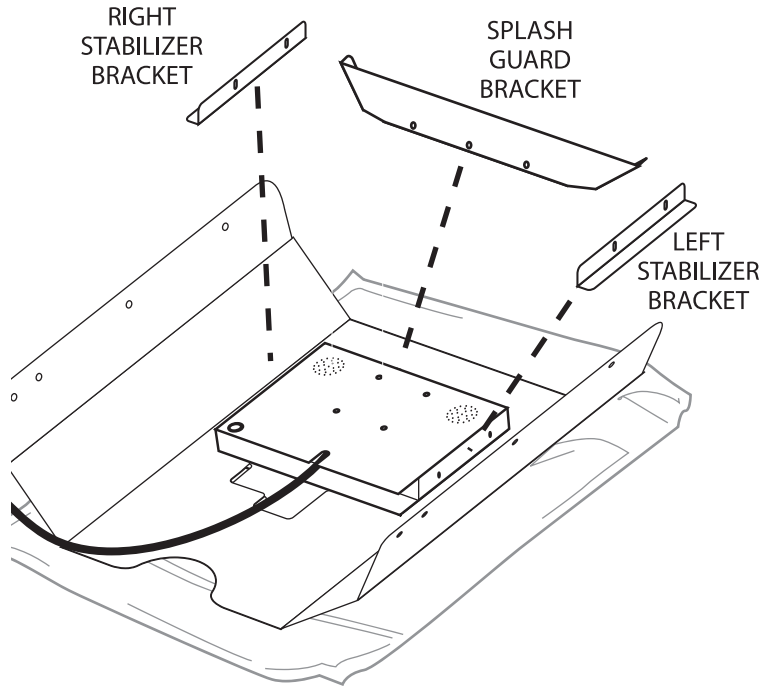


**WARNING:** HANDLE THE TOUCH PANEL CAREFULLY ONCE THE SCREWS ARE REMOVED. ONLY TWO OTHER SCREWS WILL BE HOLDING THE BACK COVER TO THE TOUCH PANEL.

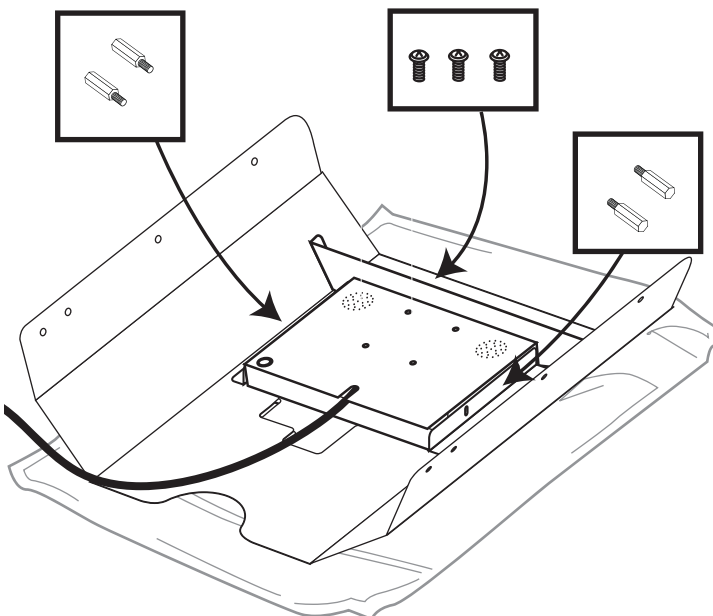
- 11** To attach the Color Touch Panel to the facade, place the panel through the facade opening. Place a towel or soft material on a flat surface, and set the facade with the Touch Panel face down onto the soft surface.



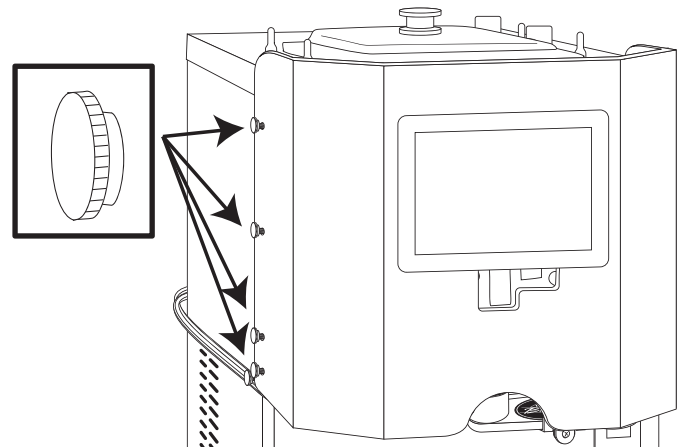
- 12** Place the splash guard bracket on the top of the Touch Panel and inside the facade. Place the right and left stabilizer brackets to either side of the Touch Panel as shown. Align all the slots of the brackets with the screw holes of the Touch Panel.



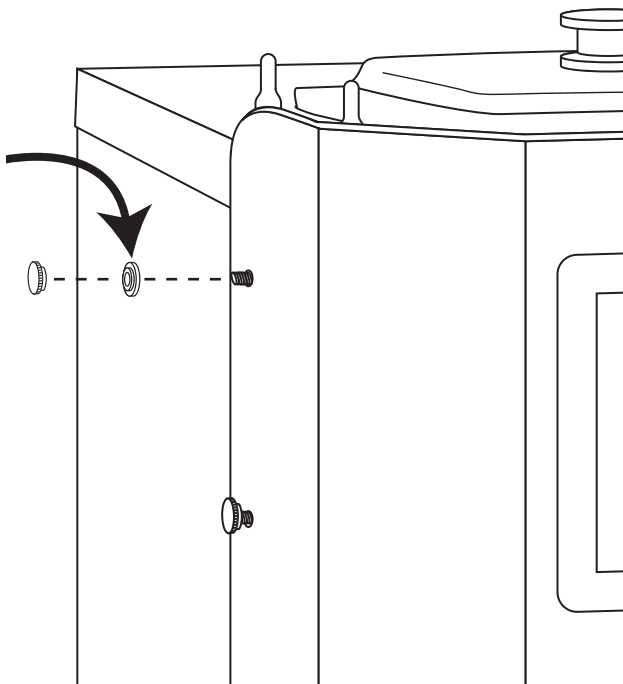
- 13** Install two hex bolts to either side of the Touch Panel to secure the stabilizer brackets, and three screws to the top of the Touch Panel to stabilize the splash guard. Gently press each bracket against the facade surface as you tighten the bolts and screws. There should be no space between the front of the Touch Panel and the facade, or between the facade and the brackets..



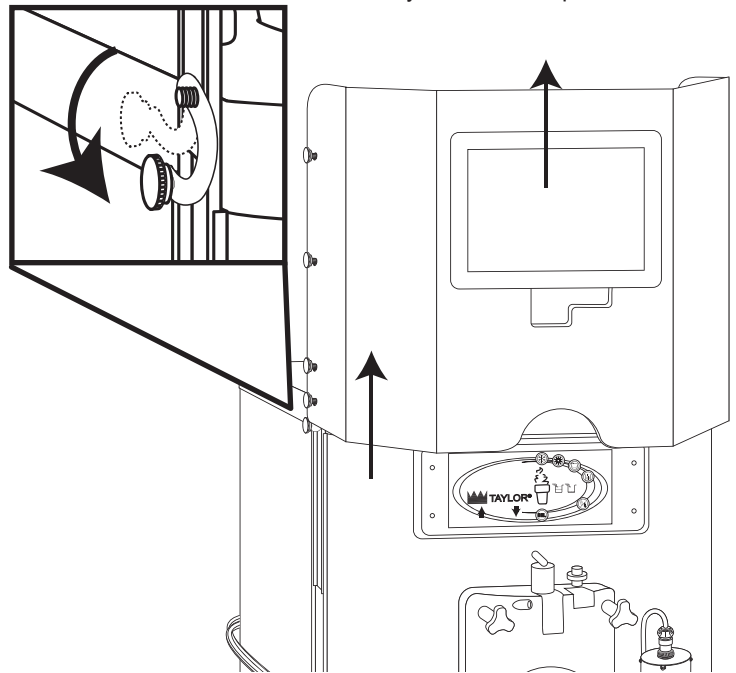
- 14** After the sliding rails have properly cured, carefully install the facade onto the rails by inserting the rail posts through the holes on each side of the facade. Secure the facade to the rails with the thumb knobs provided.



- 15** **OPTIONAL:** If your facade has a wrap, use the protective washers included in this kit to prevent the wrap from buckling and twisting when turning the thumb knobs. Install the washer on the bracket post, between the thumb knob and the facade.

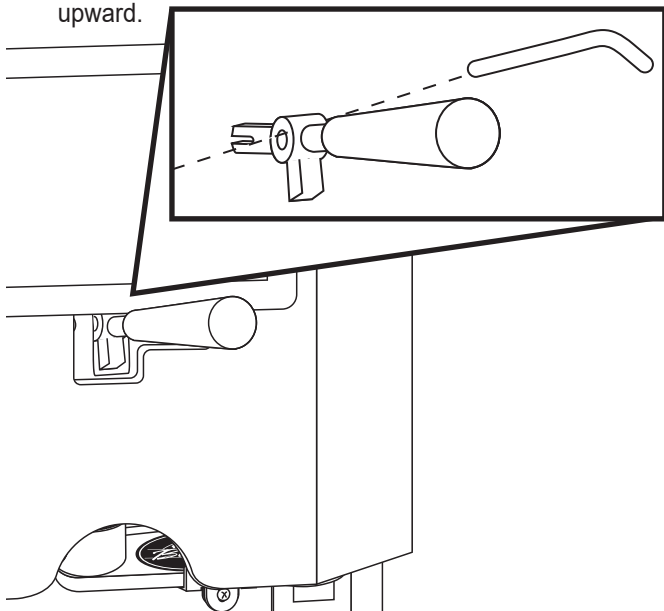


- 16** Check the locking arms of the rails by sliding the facade assembly up. Move the locking arms toward you until the post of the thumb screw rests on top of the rail. Ensure the locked position of the facade is secure and then lower the facade assembly to its normal position.



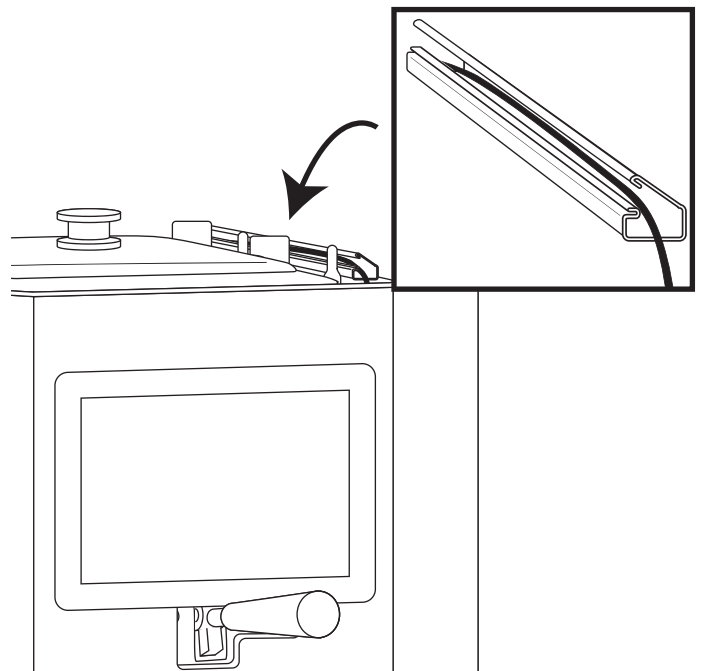
**NOTE:** USE THE LOCKING ARMS EVERY TIME THE FACADE IS IN THE UPWARD POSITION TO PROTECT THE TOUCH PANEL AND THE OPERATOR.

- 17** Install the Taylor #X56421-1 draw handle and pin through the opening of the facade under the Touch Panel. The standard Taylor draw handle is not compatible with this facade; the Taylor #X56421-1 draw handle is designed to extend outward from the freezer, instead of upward.



**NOTE:** THE DRAW HANDLE AND PIN HAS TO BE REMOVED IN ORDER TO SLIDE THE FACADE UPWARD.

- 18** Place the Touch Screen ethernet cable inside the plastic railing that came with your Flavor Burst system. Give the cable enough slack so that it does not pull on any connections when the facade is lowered and raised. For instructions on installing the railing, see EQUIPMENT SETUP in your Operations Manual.



- 19** Refer to your Operations Manual for instructions on how to connect the cable of Touch Panel to the Flavor Burst cabinet, install the switch assembly, and install the tube and cable casings to hide the syrup tubes and other cables. Learn how to maintain and service your new Flavor Burst system with this manual as well. Refer to the Color Touch Panel Operations Manual for details on how to set up and operate the Touch Panel. Test the Flavor Burst system to ensure it works properly.

