

Flavor Burst®

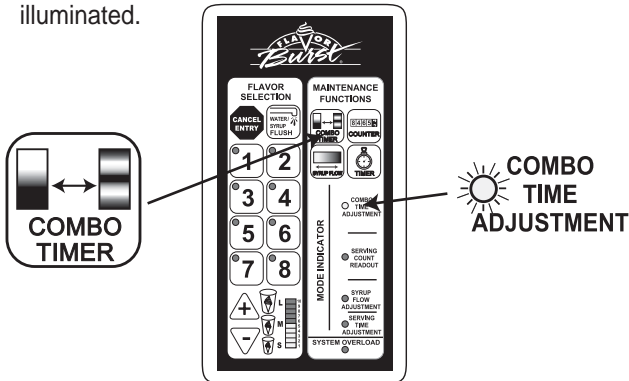
ELE 550 FB KEYPAD - AUTO

Keypad Operations

The ELE 550 Flavor Burst® keypad allows the operator to adjust and set certain keypad operations. Syrup concentration can be increased or decreased. Adjustments can be made to increase and decrease the rate of flavor change in multi-flavored servings. Large, medium and small serving sizes can be preset to help maintain serving size consistency and to reduce carryover of flavor between servings. The water and syrup flush keys have been consolidated into one key. The keypad also keeps count of servings, and access to this information is as easy as pressing a few keys. Follow the instructions to perform these keypad operations. Contact your local distributor for more information.

A ADJUSTING COMBO TIMING - Increase or decrease the length of time a flavor dispenses before it switches to another flavor in a multi-flavor serving.

- 1 Press and hold the COMBO TIMER key for three seconds until the COMBO TIMER ADJUSTMENT light is illuminated.

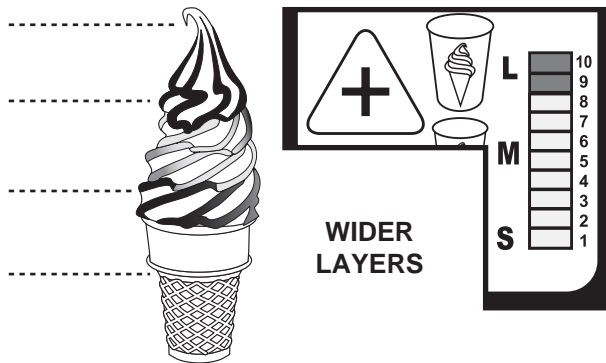


- 2 The number of illuminated bars in the graph represent the length of time each layer is dispensed. Use the following chart to determine the bar graph setting needed for the desired dispense time for each flavor layer.

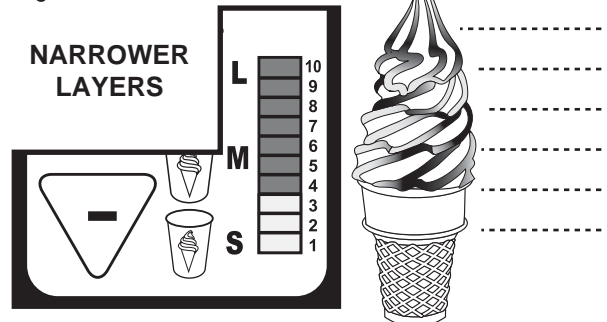
ALT. FLAVOR TIMING

1 Light	= .5 seconds
2 Lights	= .6 seconds
3 Lights	= .7 seconds
4 Lights	= .8 seconds
5 Lights	= 1.0 seconds
6 Lights	= 1.2 seconds
7 Lights	= 1.4 seconds
8 Lights	= 1.6 seconds
9 Lights	= 1.8 seconds
10 Lights	= 2.0 seconds

- 3 To increase the timing (for wider, fewer layers), press the "+" key until the correct number of bar graph lights are illuminated.

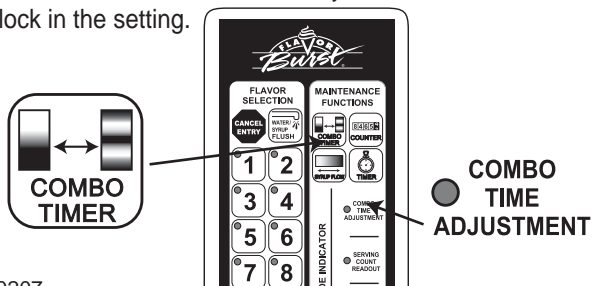


- 4 To decrease the timing (for more, narrower layers), press the "-" key until the correct number of bar graph lights are illuminated.



NOTE: IF THIS IS THE FIRST TIME THE COMBO TIMING HAS BEEN SET, SET THE TIMING TO ONE BAR (.5 SECONDS), DRAW A SERVING, AND ADJUST FOR WIDER LAYERS IF NEEDED.

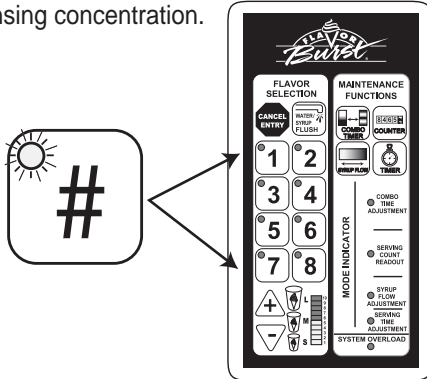
- 5 Press the COMBO TIMER key to exit the mode and lock in the setting.



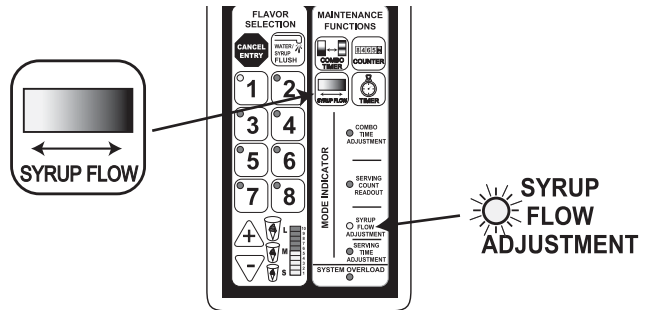
- 6 Draw a serving to determine if the adjustment is satisfactory. Repeat this process until the desired ingredient concentration is achieved.

B ADJUSTING SYRUP CONCENTRATION - Increase or decrease the amount of syrup that is dispensed for each flavor in a serving.

- 1 Select the numbered key of a flavor to adjust its dispensing concentration.



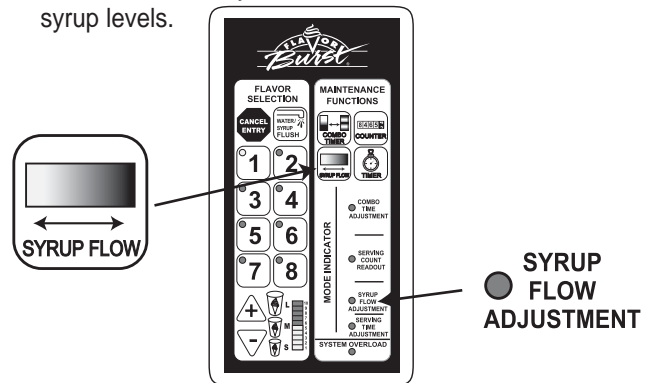
- 2 Press and hold the SYRUP FLOW key for three seconds until the SYRUP FLOW ADJUSTMENT light is illuminated.



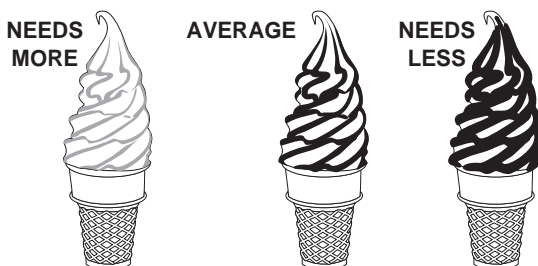
- 3 Press "+" to increase the flavor concentration or "-" to decrease the concentration. The level is indicated by the illuminated bars on the graph.



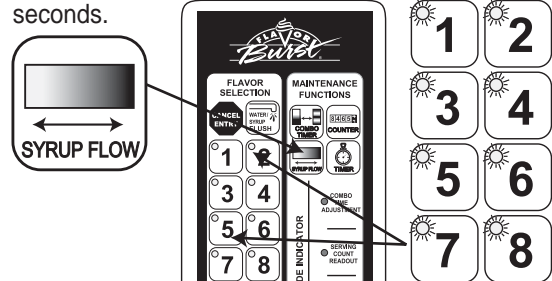
- 4 Repeat steps 1 and 3 (skip step 2) for each flavor that needs to be adjusted. When finished, press the SYRUP FLOW key to exit the mode and lock in the syrup levels.



- 5 Draw a serving for each adjusted flavor to determine if the syrup concentration level is acceptable. Repeat this process for any flavors that need to be adjusted again.

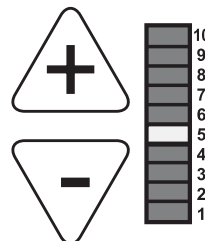


- 6 To adjust all the flavors to the same level at once, do not select a specific flavor (skip step 1) before pressing and holding the SYRUP FLOW key for three seconds.

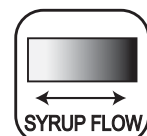


- 7 All the numbered key lights 1-8 will be illuminated after entering the mode and a single adjustment can be made for all eight flavors at once. A single bar will illuminate in the middle of the graph. Move the bar up or down using the "+" and "-" keys. For each level the illuminated bar is moved, each flavor's individual level will increase or decrease by the same number of bars.

For example, if the #2 key flavor was previously set at a level 3 and #6 flavor was set at a level 7, moving the bar up two levels in this mode will reset the #2 flavor to level 5 and the #6 flavor to level 9.

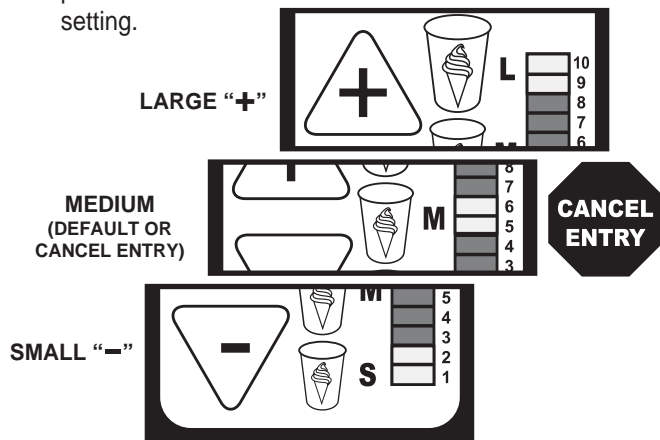


- 8 Press the SYRUP FLOW key to exit the mode and lock in the syrup levels.

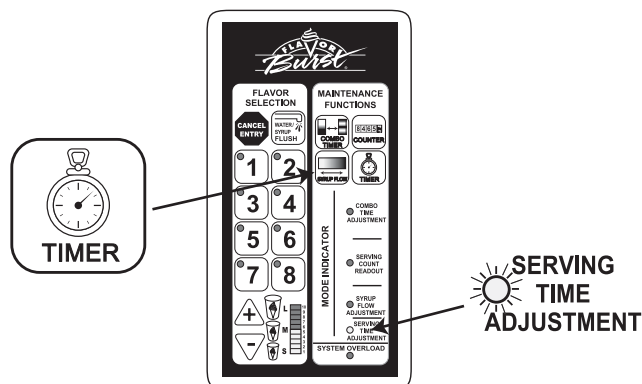


C SETTING SERVING SIZE TIMING - Program the pumps to cease flavor and signal the operator when a small, medium or large size is dispensed.

- 1** To adjust the small serving, press the “-” key. To adjust the large serving, press the “+” key. Two lights illuminate beside the size that is selected. The medium serving is the default serving size; if the size is not illuminated, press CANCEL ENTRY to return to the default medium setting.



- 2** Press and hold the TIMER key for three seconds until the SERVING TIME ADJUSTMENT light is illuminated.

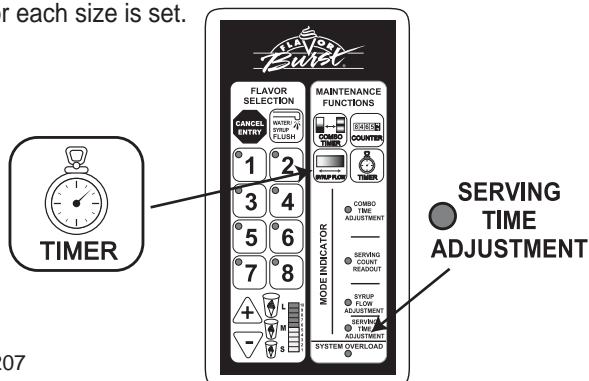


- 3** The number of illuminated bars in the graph represent the length of time the serving is dispensed. Use the following chart to determine the bar graph setting needed for the desired serving size time.

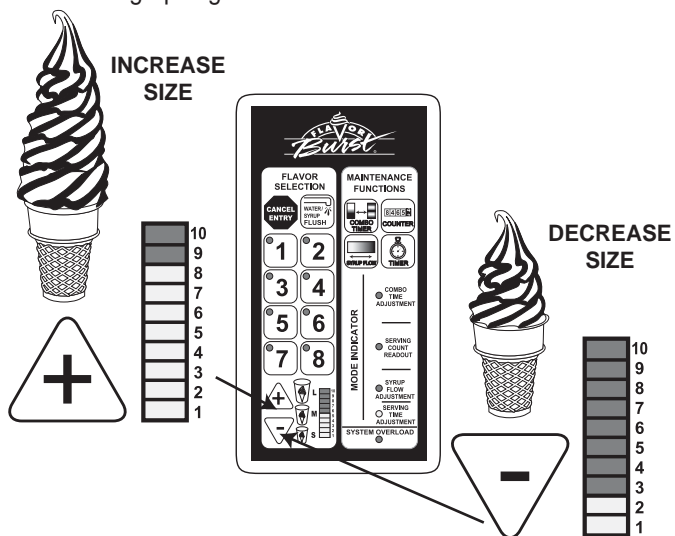
OUTPUT LEVEL	SMALL	MEDIUM	LARGE
1 Light	2 seconds	3 seconds	4 seconds
2 Lights	3 seconds	4 seconds	6 seconds
3 Lights	4 seconds	5 seconds	8 seconds
4 Lights	5 seconds	6 seconds	10 seconds
5 Lights	6 seconds	7 seconds	12 seconds
6 Lights	7 seconds	8 seconds	14 seconds
7 Lights	8 seconds	9 seconds	16 seconds
8 Lights	9 seconds	10 seconds	18 seconds
9 Lights	10 seconds	11 seconds	20 seconds
10 Lights	11 seconds	NO LIMIT	NO LIMIT

NOTE: SET THE SERVING TIME TO LEVEL 10 (NO LIMIT) TO DISABLE THE SERVING SIZE FUNCTION FOR LARGE AND MEDIUM SIZES.

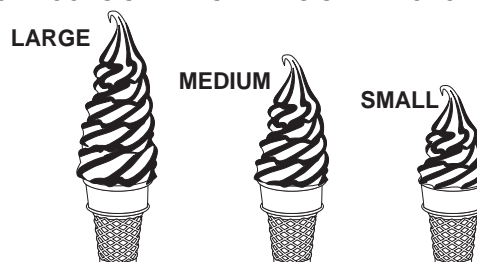
- 5** Press the TIMER key to exit the mode and lock in the setting. Repeat this process for each serving size (small, medium and large) until the desired serving time for each size is set.



- 4** Press the “+” key to increase the serving size or press the “-” key to decrease the size until the desired number of bar graph lights are illuminated.

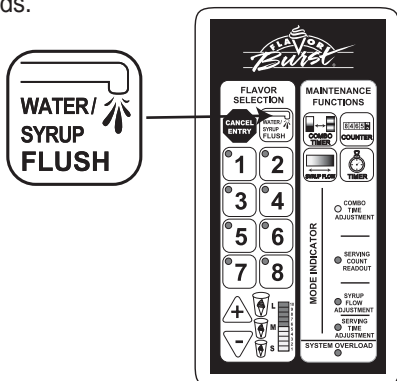


NOTE: WHEN A PARTICULAR SIZE IS SELECTED, THE SYRUP PUMP WILL STOP THE FLOW OF SYRUP AT THE SET TIME; TWO SECONDS LATER, A SOUND WILL NOTIFY THE OPERATOR TO CEASE DISPENSING THE SERVING. THIS ALLOWS SYRUP TO CLEAR THE INJECTOR HEAD, REDUCING CARRYOVER, AND INFORMS THE OPERATOR WHEN THE SERVING SIZE IS ACHIEVED FOR MORE CONSISTENT SERVING SIZE PROPORTIONS.

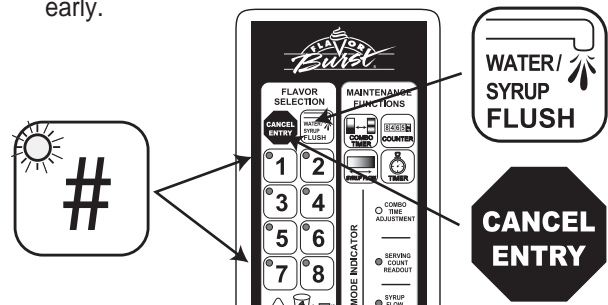


D OPERATING WATER/SYRUP FLUSH - Dispense water to clean the Injector Head or syrup to prime the syrup lines.

- 1** To dispense water to flush out the Injector Head, press the WATER / SYRUP FLUSH. Water will dispense for 5 seconds.

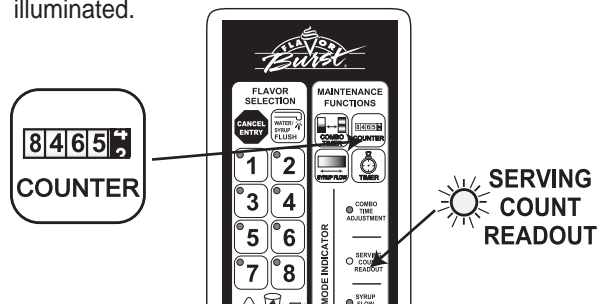


- 2** To prime a syrup pump or line, press the numbered key of the flavor. Then, press and hold the WATER / SYRUP FLUSH key for three seconds. Syrup will dispense for fifteen minutes before shutting off. Press CANCEL ENTRY at any time to stop the syrup flow early.

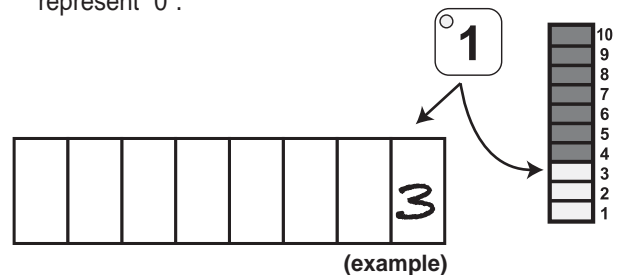


E ACCESS SERVING COUNT - Check the number of servings since the last time the counter has been reset.

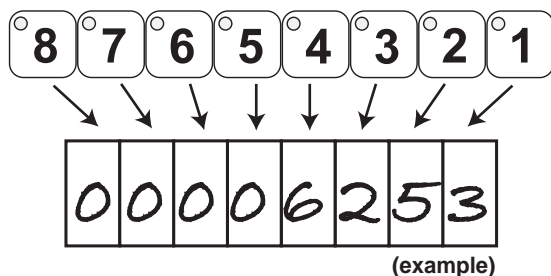
- 1** Press and hold the COUNTER key for three seconds until the SERVING COUNT READOUT light is illuminated.



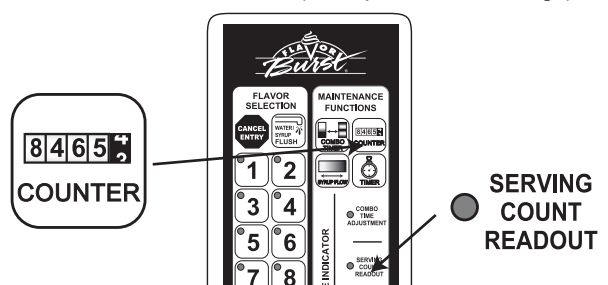
- 2** Select the #1 key and record the number of bars that illuminate on the bar graph as the last digit in the serving count. 10 illuminated bars on the graph represent "0".



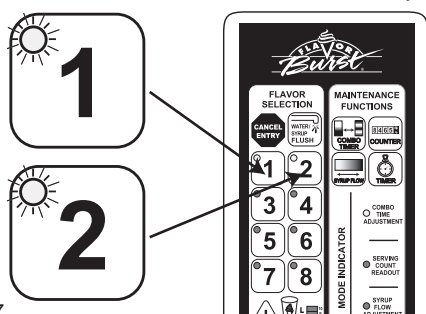
- 3** Select #2, count the bars, and record it as the second to last digit in the serving count. Continue this process for keys #3-8.



- 4** When all digits are recorded, press the COUNTER key to exit the mode. The resulting number is the number of servings the unit has dispensed since the last time the counter has been reset (example: 6,253 servings).



- 5** To reset the counter back to 0, select keys #1 and #2.



- 6** Press and hold the COUNTER key until there is an audible beep. After approximately 10 seconds, the registers will be cleared and the counter will be reset.

