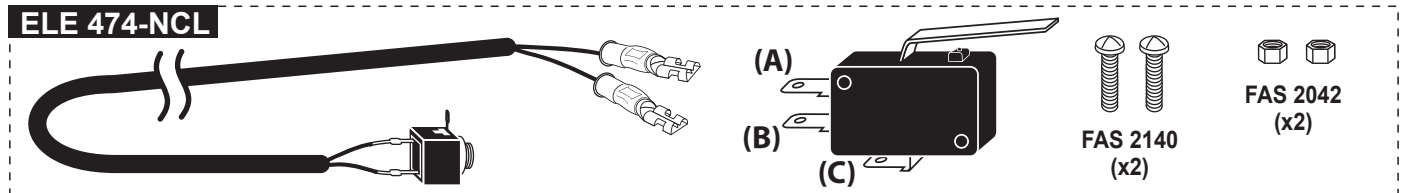


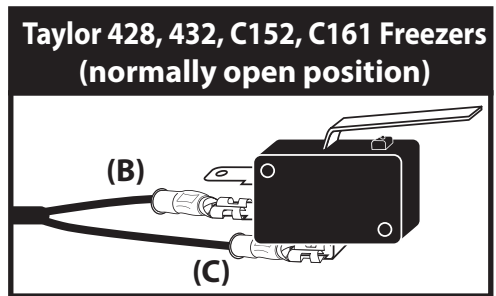
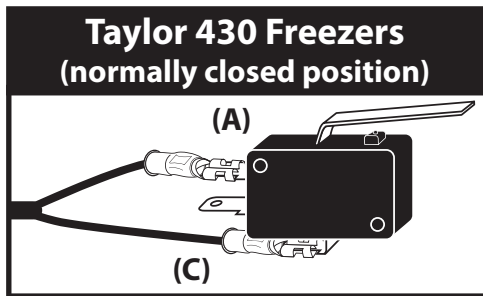
Flavor Burst™

ELE 474-NCL No-Cross-Lever Integrated Spigot Switch Kit Installation on a Taylor 430 Freezer

The ELE 474-NCL is designed for use with the Taylor® 430 freezer models. It uses the existing internal Taylor® switch assembly to activate the Flavor Burst® unit. Two recommended locations for installing the stereo panel jack are noted below, although other locations may be acceptable according to your application -- be sure to consider the desired keypad location, additional freezer-mounted POP, and kiosk applications as you prepare for installation.



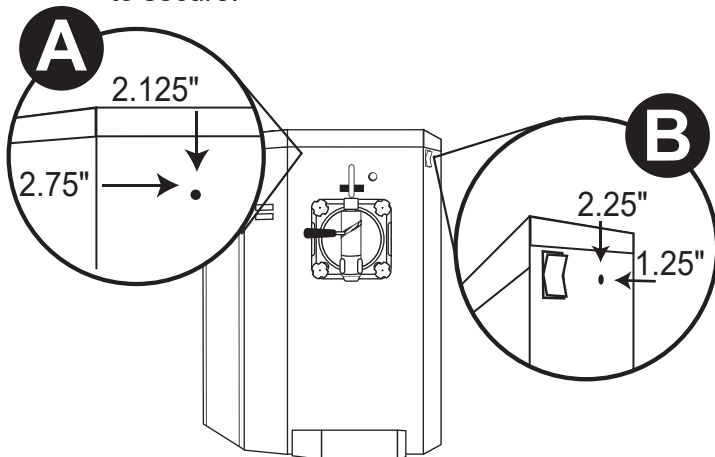
NOTE: THE WIRING CONFIGURATION OF THE SWITCH WILL DEPEND ON THE FREEZER IT'S INSTALLED ON. THE CONNECTIONS SHOULD MATCH THE EXISTING FREEZER SWITCH.



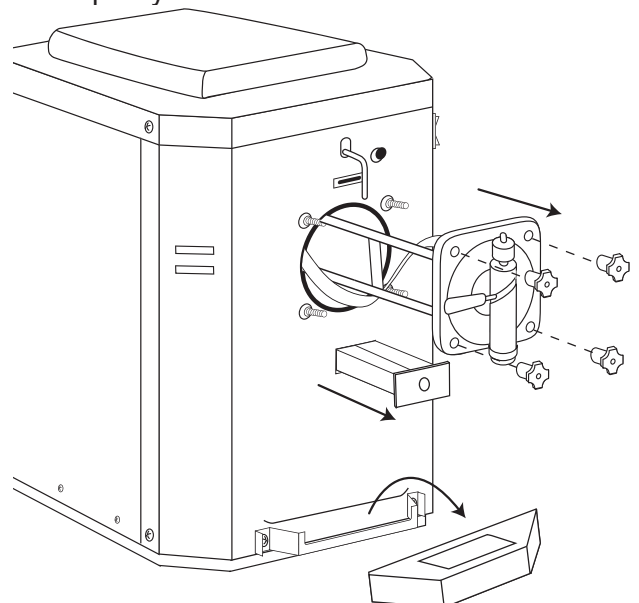
WARNING: DO NOT ATTEMPT INSTALLATION UNTIL THE MAIN POWER SUPPLY TO THE FREEZER HAS BEEN DISCONNECTED.

DISCLAIMER: UL DOES NOT RECOGNIZE THIS APPLICATION AS AN APPROVED PROCEDURE DUE TO THE DRILLING REQUIRED. WHEN THIS PROCEDURE IS USED ON A UL LISTED FREEZER, THE INSTALLER WILL BE PERFORMING INSTALLATION PROCEDURES BEYOND THE PARAMETERS UNDER WHICH THE UNIT WAS APPROVED.

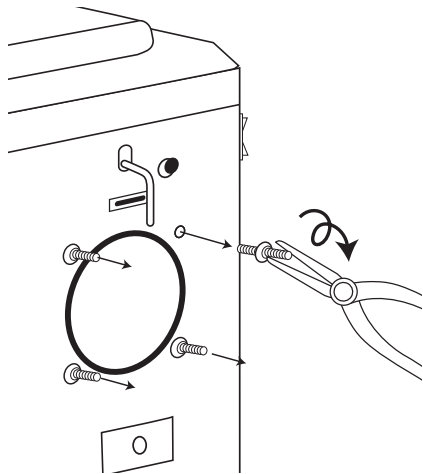
1 Ensure power supply disconnected from the freezer. Drill a 1/4" hole in the freezer panel in location **A** or **B**. Mount the panel jack through the hole from inside the freezer. Thread the ring to the panel jack from outside the freezer to secure.



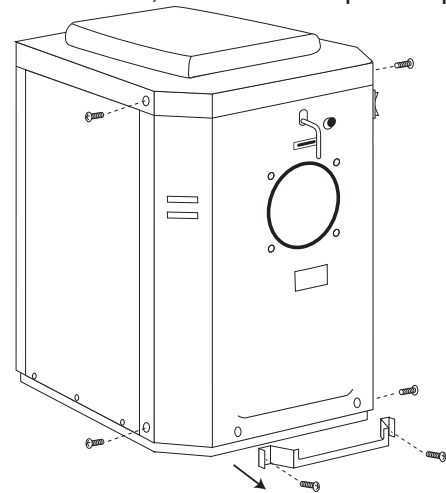
2 Ensure the freezer is empty of product and cleaned. Remove the freezer head, tray and drip tray from the freezer.



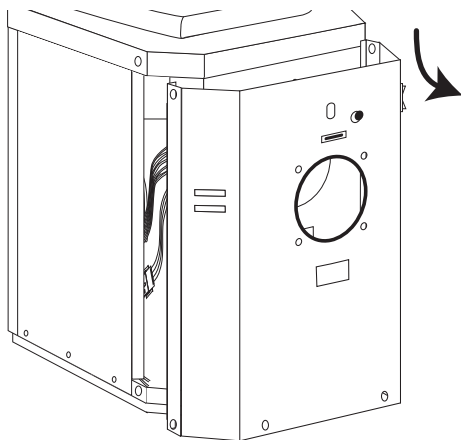
- 3** Using needle-nose pliers, remove the four screw pins from the freezer.



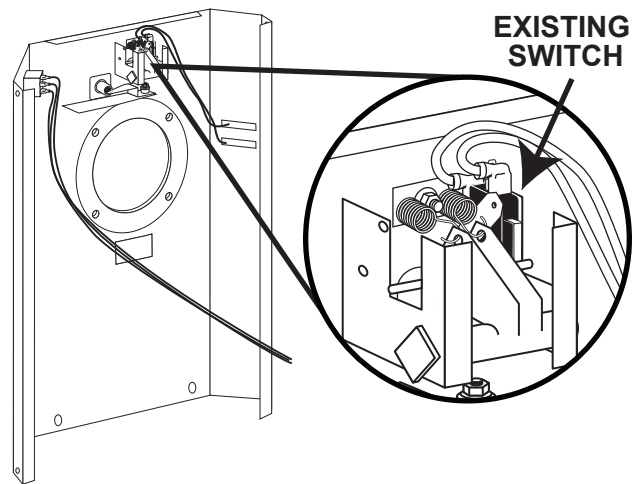
- 4** Unscrew and remove the tray bracket. Remove the freezer face screws located at the top and bottom of each side, near the side panel opening.



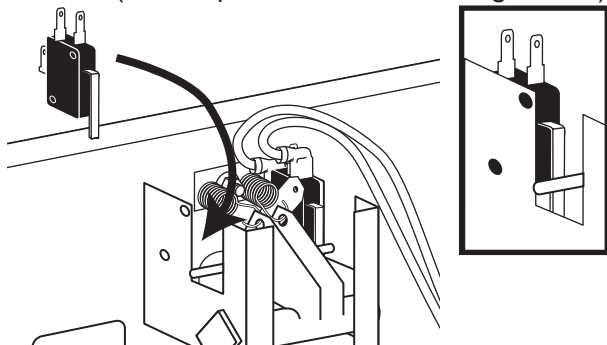
- 5** Remove the freezer face by carefully sliding it down and away, taking special note of the adjustment bolt. The face should remain attached to the freezer by wires as much as possible. Set the face panel upright just in front of the freezer.



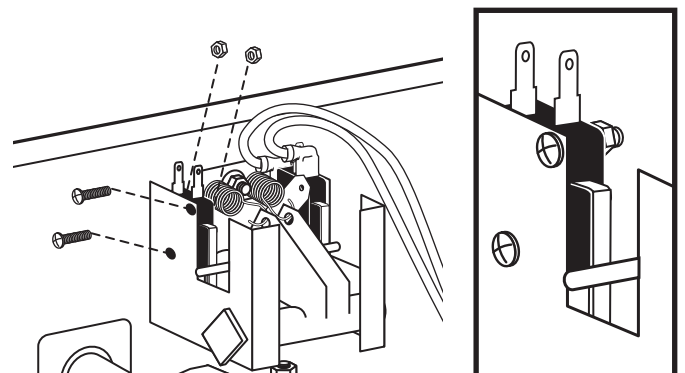
- 6** Locate the switch compartment on the inside of the freezer face, at the top center. You will see an existing switch inside the compartment area, and a space on the opposite side of the springs where the new switch will also be installed.



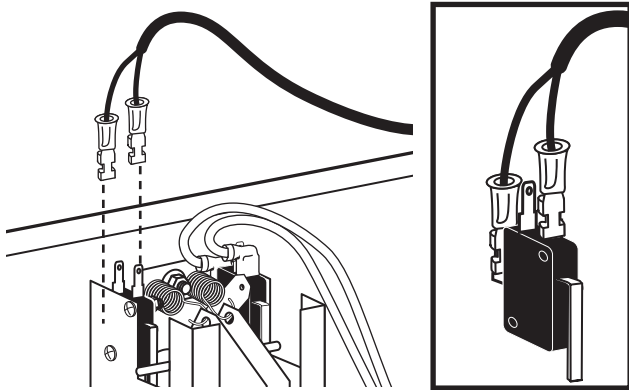
- 7** Place the new ELE 474-NCL switch inside the compartment wall, opposite the existing switch, with the two spades pointing up. The lever should be facing outward, angled downward, and pinned against the switch by a thin bar (similar position to the existing switch).



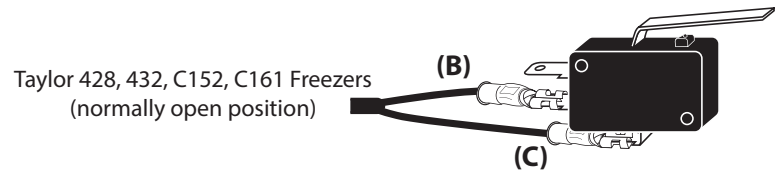
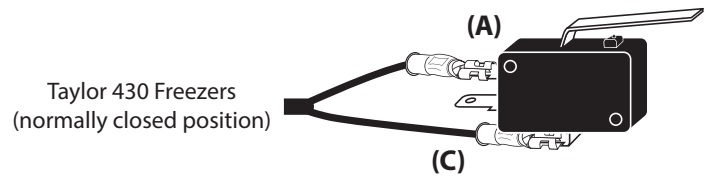
- 8** Line up the holes of the switch with the holes on the compartment wall. Install the two screws through the wall and switch, and secure them with the nuts.



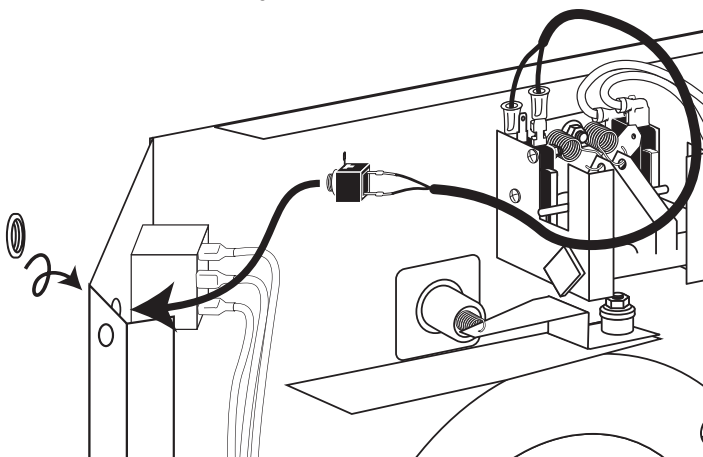
- 9** Attach the two female spade connectors to two of the switch spades -- the one closest to the panel and down the side, and the one on top furthest from the panel. There should be an exposed spade in between the connectors.



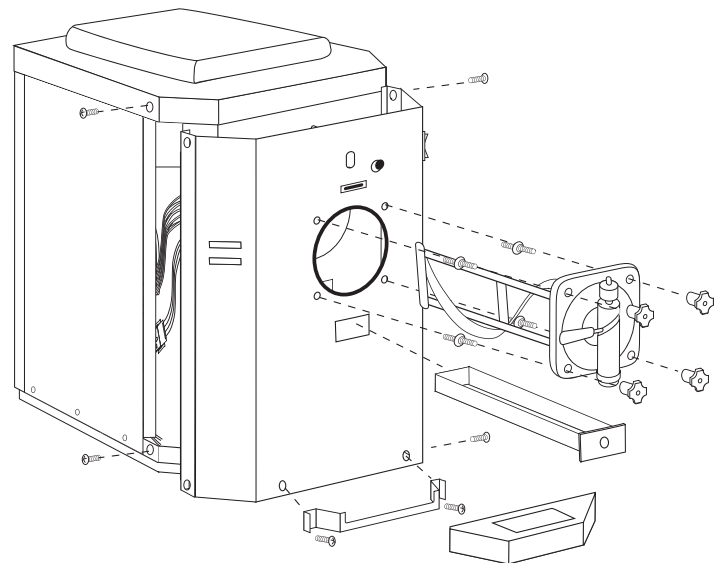
- !** NOTE: Attach the spade connectors to the new switch to match the configuration of the freezer's existing switch. Depending on the model of freezer, this configuration may be different.



- 10** Mount the panel jack through the drilled hole from inside the freezer panel. Thread the ring to the panel jack from outside the panel.



- 11** Reassemble the freezer in the reverse order it was disassembled.



- 12** Connect the spigot switch from the Color Touch Panel (or Touchscreen, or Keypad) to the newly installed switch jack to complete the installation.

