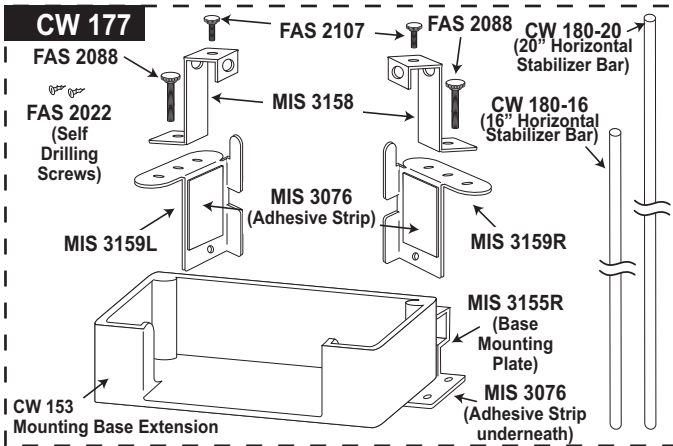


Flavor Burst™

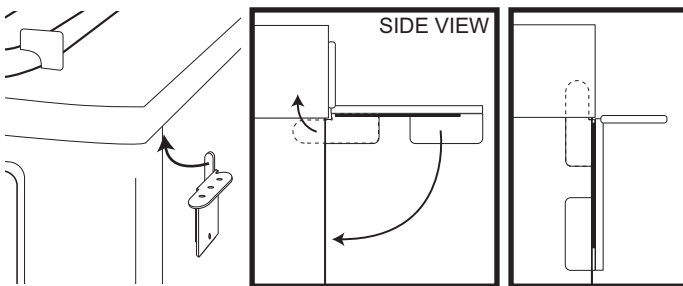
CW 177 Temporary Mounting Bracket Kit

Installation

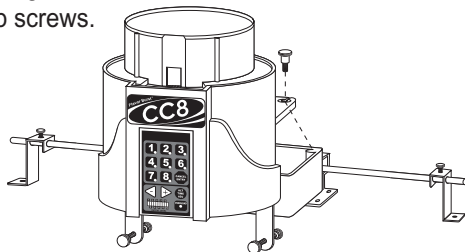
This method of mounting the CC8 is recommended for temporary mounting such as for demos, shows, etc. For best results or for long-term mounting, use the permanent mounting procedure and bracket kit whenever possible.



2 Remove the backing from the adhesive on the right anchor bracket. Insert the upper tab fully into the freezer panel seam where the seam meets the cap panel. Pressing upward, rotate the bracket down until both tabs are inserted in the seam and press it against the freezer to secure. The upper tab should be underneath the freezer cap panel. Repeat the process for the left anchor bracket on the left side of the freezer.

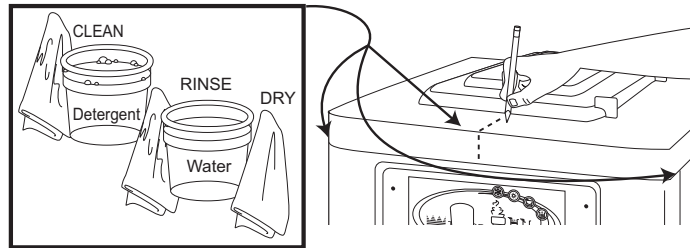


3 Assemble the rest of the Mounting Bracket kit by sliding the horizontal stabilizer bar through the back of the mounting base extension and through each of the tension brackets. Use both thumb screws to secure the anchor brackets to the stabilizer bar. Attach the Mounting Base to the extension as shown using the thumb screws.

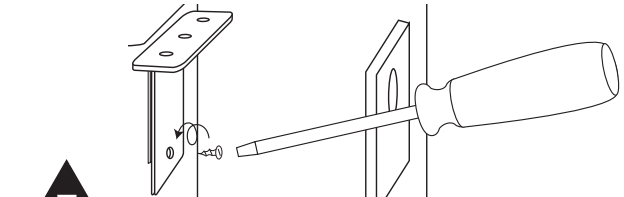


NOTE: TWO STABILIZER BARS (20" AND 16" LONG) ARE INCLUDED WITH EACH UNIT. THE 20" BAR IS FOR USE WITH NARROWER FREEZERS AND BOTH BARS ARE TO BE USED TOGETHER ON WIDER FREEZERS.

1 Thoroughly clean and dry the top and side surfaces of the freezer where the mounting assembly will be attached. Using a soft lead pencil, mark the center of the freezer top, directly above the door spout.

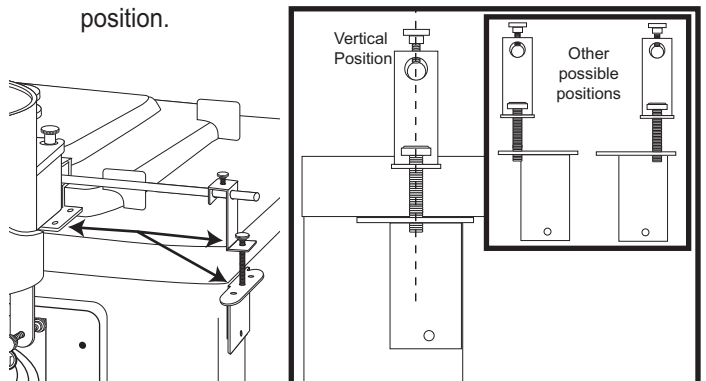


NOTE: IT IS HIGHLY RECOMMENDED SELF-TAP SCREWS ARE INSTALLED ON THE ANCHOR BRACKETS FOR MORE SECURE MOUNTING IF POSSIBLE. THE ADHESIVE TAPE IS NOT SUITABLE FOR PERMANENT OR LONG-TERM MOUNTING. IF SCREWS ARE NOT USED, FLAVOR BURST WILL NOT BE RESPONSIBLE FOR DAMAGE IF THE UNIT BECOMES DISCONNECTED FROM FREEZER.

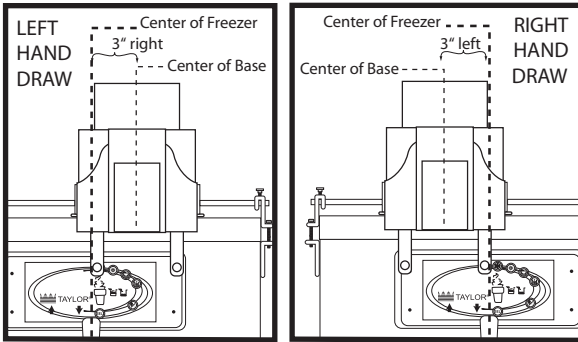


NOTE: IT IS BEST TO DRILL 1/8" HOLES BEFORE INSTALLING THE SCREWS. ENSURE THERE ARE NO WIRES BEHIND THE PANEL WHEN DRILLING OR INSTALLING SCREWS.

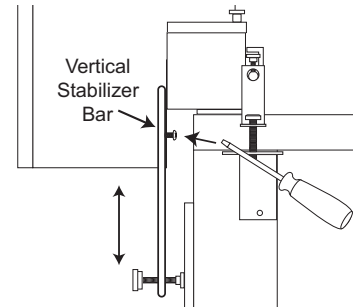
4 Position the assembly on the freezer so that the tension brackets line up with the anchor brackets and the extension plate sits fully on top of the freezer. Using the anchor bracket thumb screws, secure the tension brackets to the anchor brackets. Use the anchor screw hole that allows the screw to be installed in a vertical position.



- 5** Position the center of the mounting base assembly within 3 inches left or right of the freezer center. If the draw handle is operated by the left hand, the Mounting Base should be mounted within 3" to the right of the center of the draw handle. Conversely, if the draw handle is operated by the right hand, the Mounting Base should be mounted within 3" to the left of the center of the draw handle.

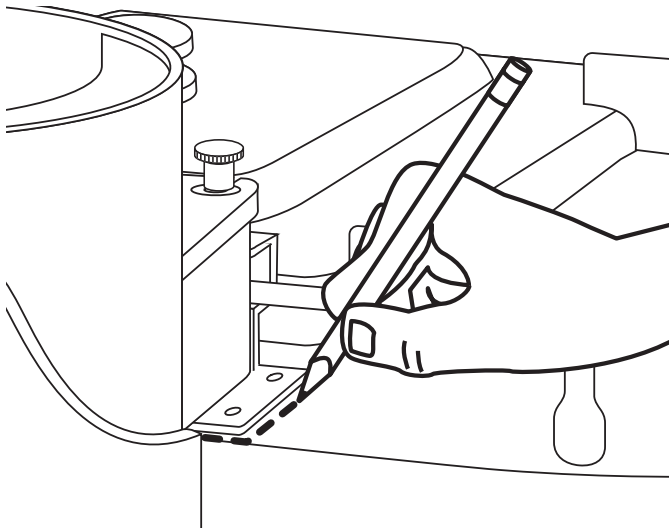


- 6** Adjust the vertical stabilizer bar screws to extend the bars downward as far as possible without obstructing any freezer operational controls. Tighten the screws to secure the position.

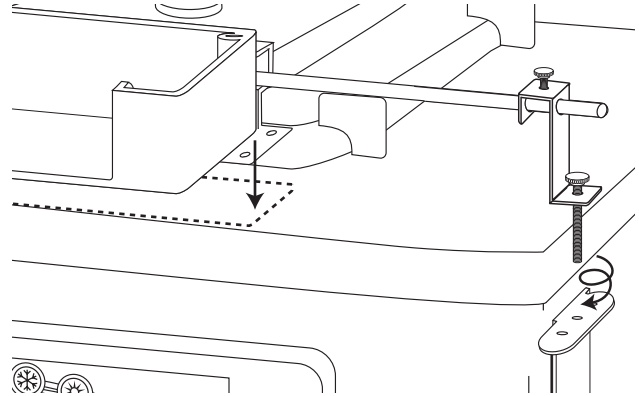


NOTE: REMOVE THE MOUNTING BASE FROM THE BRACKET TO LOOSEN AND TIGHTEN THE VERTICAL STABILIZER BAR SCREWS.

- 7** Use a soft lead pencil to mark around the plate of the base extension.



- 8** Remove the Mounting Bracket from the freezer anchor brackets and then remove the Mounting Base from the extension. Remove the protective tape from the adhesive of the extension plate and reinstall the bracket assembly to the freezer, placing the extension within the penciled marks and pressing firmly. Allow the adhesive to cure for at least one hour.



- 9** Install the mounting base to the mounting base extension and tighten the hand screws to secure. Adjust the vertical stabilizer bar thumb nuts to ensure the mounting base is level.

- 10** Ensure the chip hopper funnel is in place within the mounting base and install the carousel over the funnel with the #1 dispensing module in front. Ease the carousel down onto the mounting base until the electrical connection engages.

