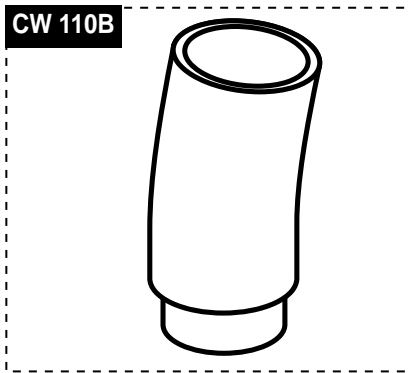


# Flavor Burst®

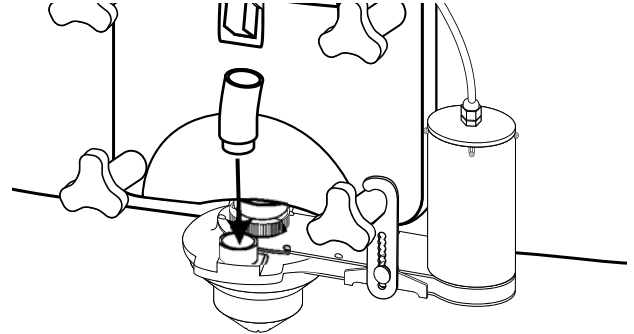
## CW 110B Transfer Tube Adapter

### Installation

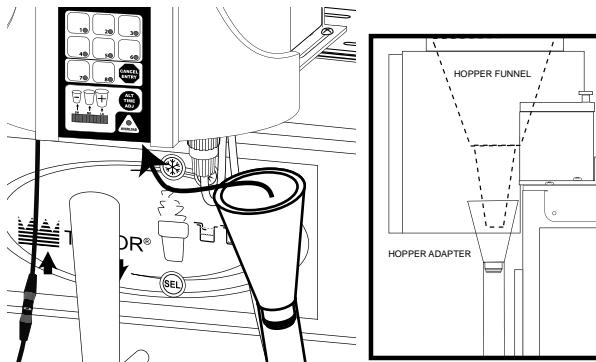
The CW 110B Transfer Tube Adapter replaces the elbow tubes and provides a gradual curved connection between the Hopper Tube Assembly and Blending Hopper port. This piece allows the tube to curve out of the way of the draw handle without bending it sharply, which can slow or jam the flow of ingredients from the Mounting Base. Install the Tube Adapter as instructed. For more information, please contact your local Flavor Burst® distributor.



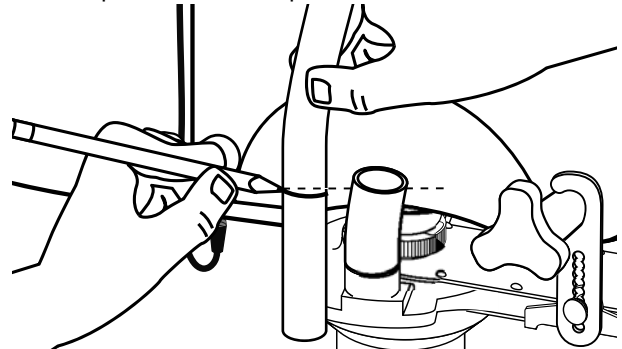
- 1** Insert the smaller end of the Tube Adapter into the outer Blending Hopper port.



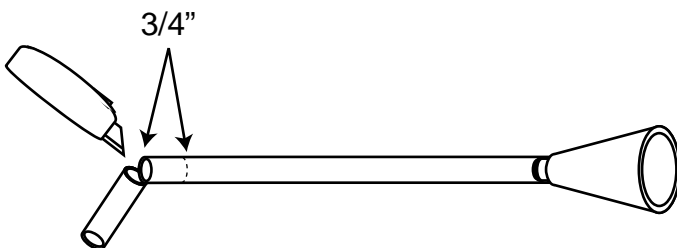
- 2** Insert the top of the Hopper Tube Assembly into the opening of the Mounting Base plate until it engages the internal funnel.



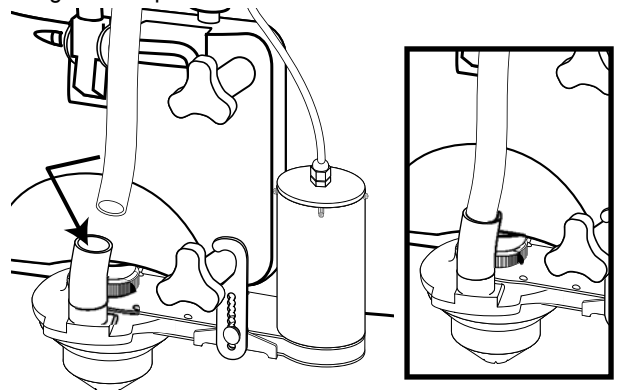
- 3** Holding up the Hopper Tube Assembly as far as it will go into the Mounting Base, mark where the tube lines up with the top of the Tube Adapter.



- 4** Remove the Hopper Tube Assembly and cut the tube 3/4" longer than where the tube was marked.



- 5** Return the Hopper Tube Assembly to the Mounting Base and insert the tube end into the Tube Adapter as far as it will go to complete the installation.



**NOTE:** THE TUBE ASSEMBLY SHOULD NOT HAVE ANY SHARP BENDS AND SHOULD BE FULLY INSERTED INTO THE ADAPTER AND MOUNTING BASE.