

Flavor Burst®

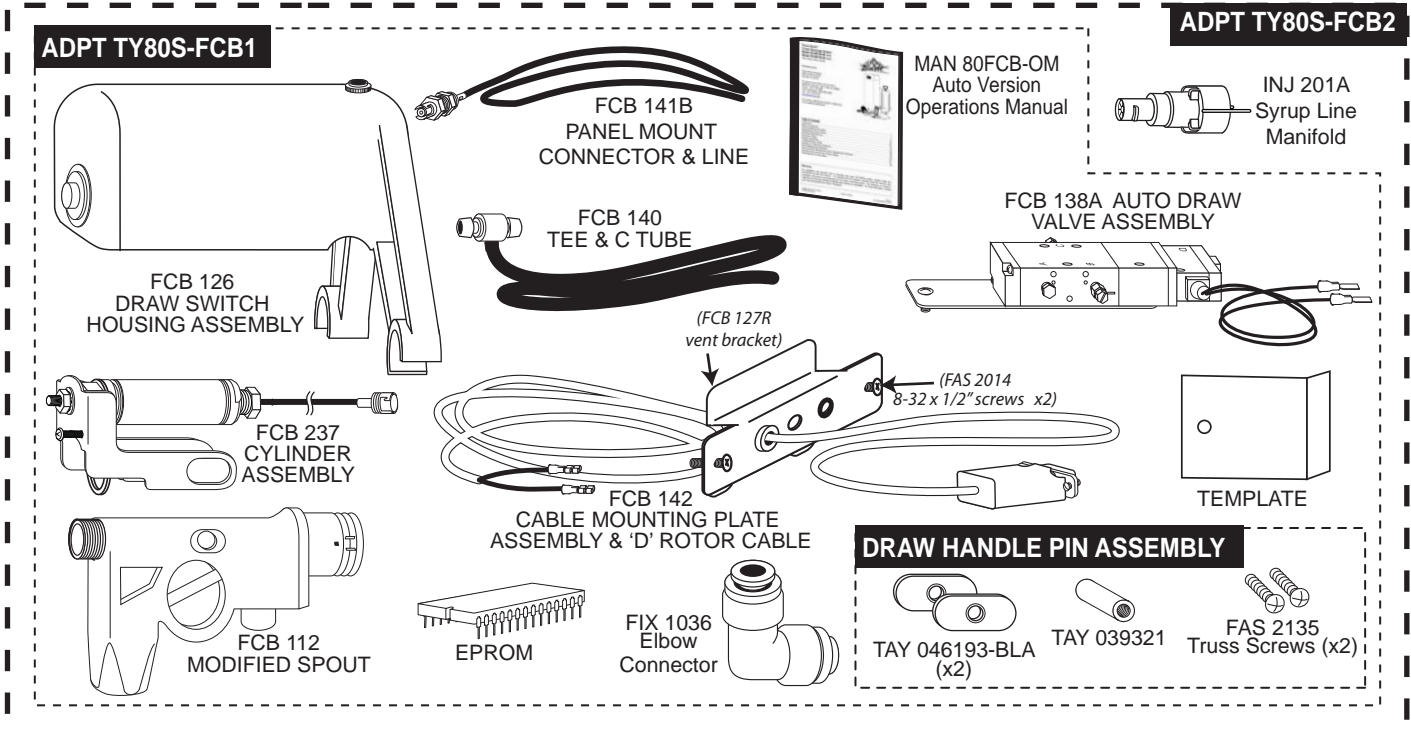
ADPT TY80S-FCB2 FCB Auto Draw Valve Conversion Kit

Installation

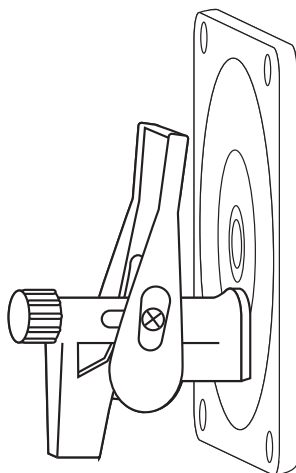
This kit converts the Flavor Burst® FB 80Sa frozen beverage system to a Flavor Burst® auto draw valve FCB system. When attached to an FCB freezer, this system allows for push-button dispensing without the use of a draw handle. This kit also includes a purge feature to help reduce flavor carryover between servings. The following instructions are for a field conversion of the freezer. For more information, please contact your local Flavor Burst® distributor.



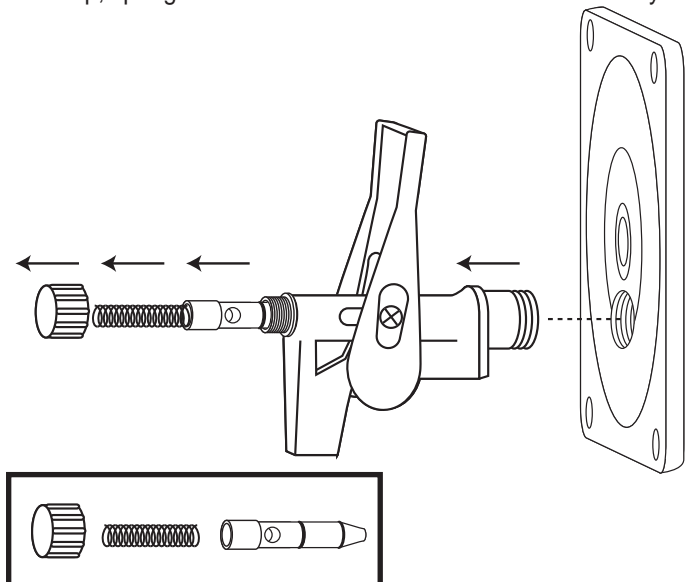
NOTE: BE SURE THE FCB FREEZER IS EMPTY OF PRODUCT BEFORE INSTALLING THIS KIT.



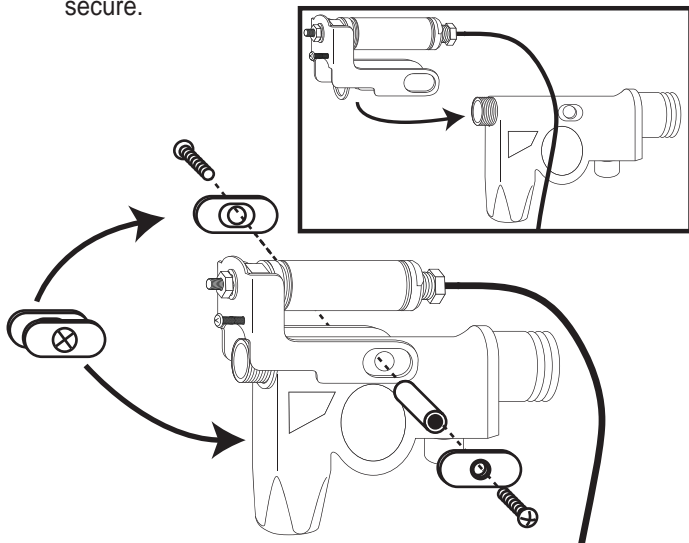
- 1 Determine which side, left or right, the Auto Draw Valve Assembly is to be installed. Remove the freezer door and spout assembly from the freezer.



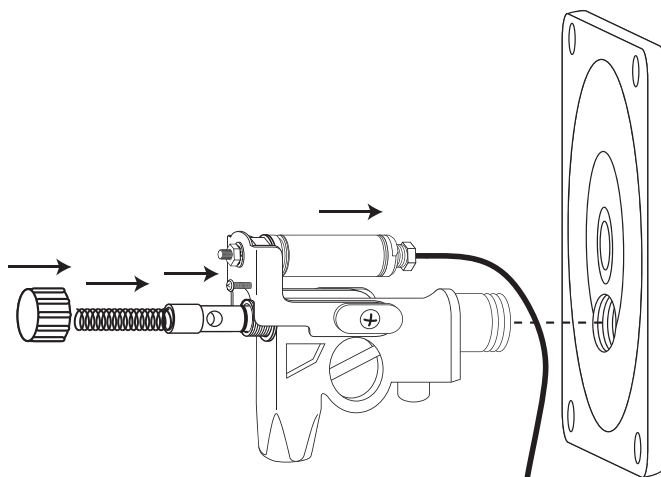
- 2 Remove and disassemble the draw spout. Set aside the cap, spring and valve for use with the modified assembly.



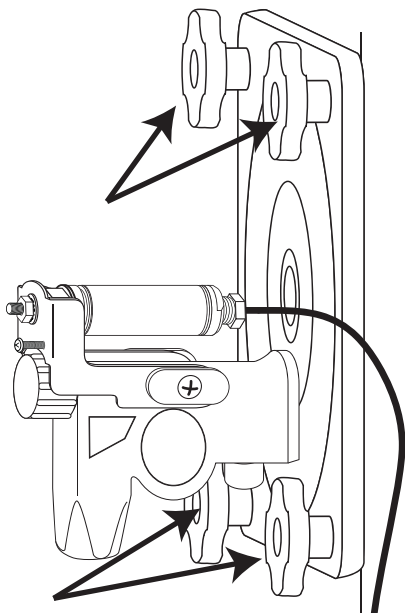
- 3** Install the Cylinder Assembly on the modified door spout by sliding the bracket over the threaded portion of the door spout. Install the draw handle pin assembly from the kit onto the Cylinder Assembly and tighten screw to secure.



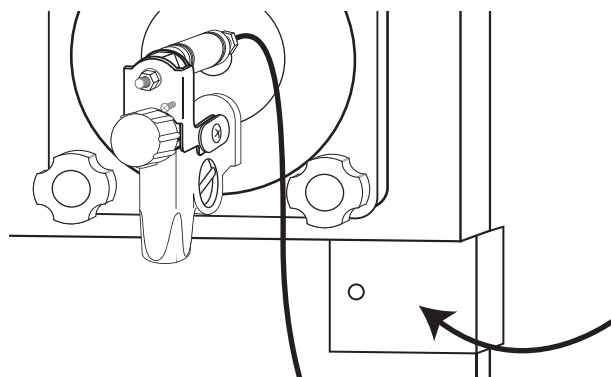
- 4** Install the valve, spring and cap to the door spout assembly. Then install the assembly onto the freezer door.



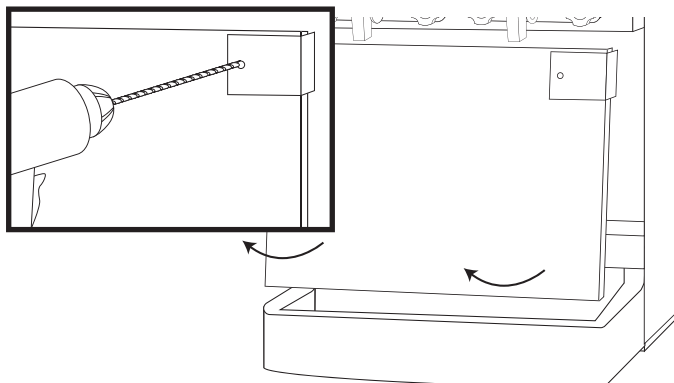
- 5** Install the door and spout assembly onto the freezer.



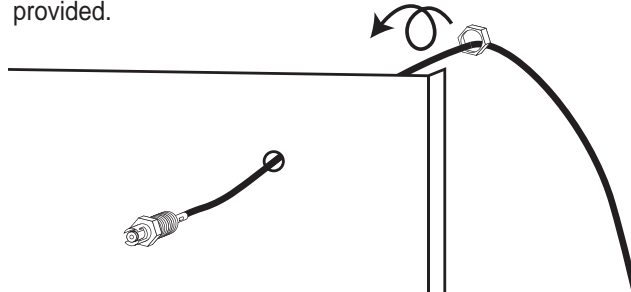
- 6** Place the drilling template on the front service panel under the draw spout so that the folded edge is placed along the service panel edge. Tape the template in place or mark the hole to be drilled in front service panel.



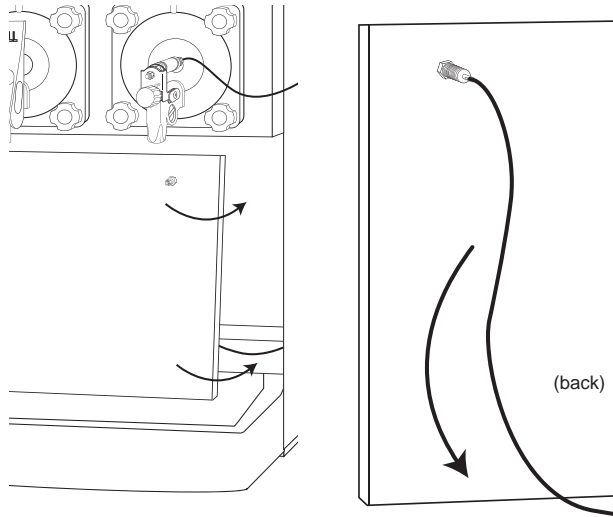
- 7** Remove the panel and drill the 7/16" hole where marked. Deburr the hole if necessary.



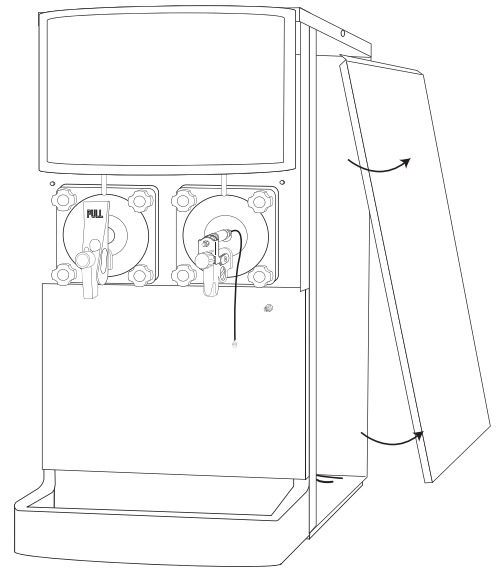
- 8** Install the panel mount connector on the panel, inserting the connector line through the hole. Secure the connector from the inside of the panel with the nut provided.



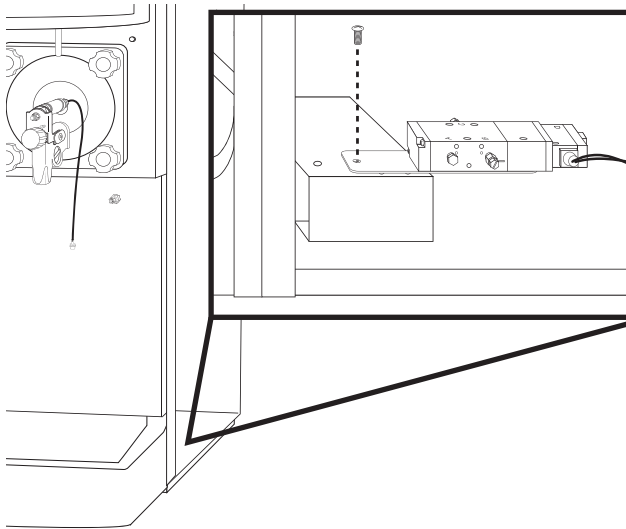
- 9** Reinstall the front service panel with the connector securely in place and tubing to the inside. Ensure the cable falls against the panel and under the support bar so that it does not interfere with any internal freezer parts.



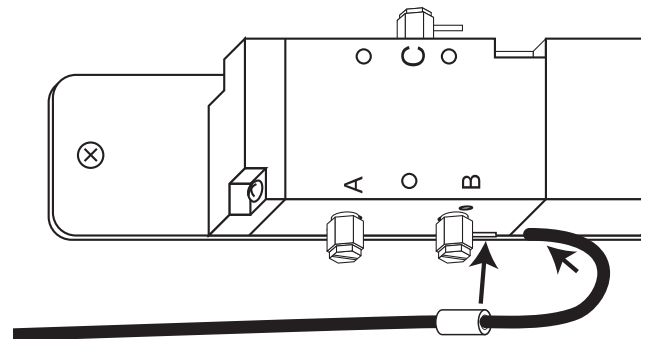
- 10** Remove the side service panel nearest the connection.



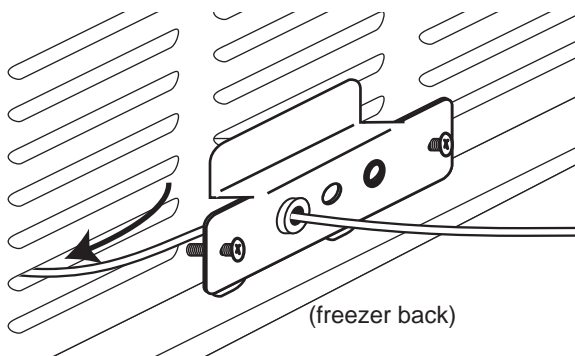
- 11** Install the Valve Assembly inside the freezer cabinet using the screw provided. Mount the base housing to the existing bracket as shown.



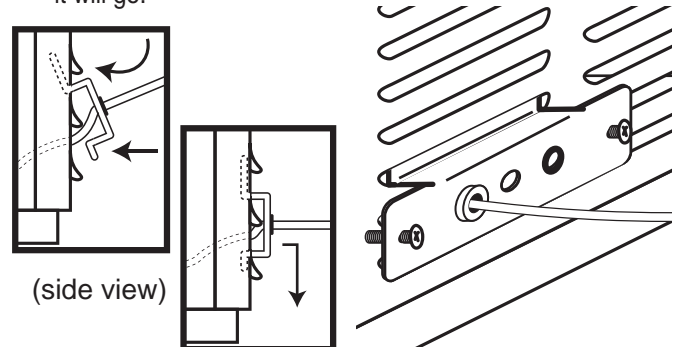
- 12** Connect the air tube to the B port on the valve. Use the tubing sleeves to secure the tube on the barb connection.



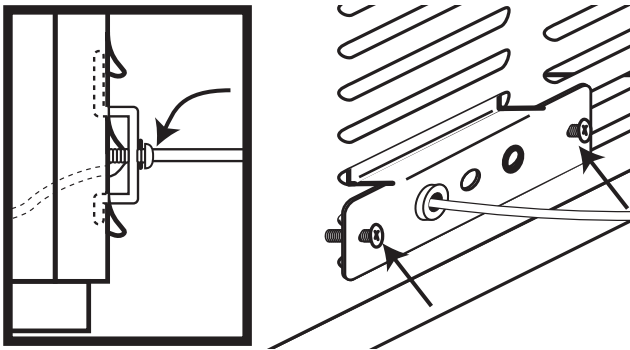
- 13** Install the cable mounting plate assembly on the same side as the Auto Draw Valve Assembly. Slide the spade connector ends of the cables through the 2nd slot from the bottom of the freezer's back vent cover.



- 14** Angle the upper bracket lip up through the 3rd vent slot from the bottom, so that the lower bracket lip can slide into the bottom vent slot. Slide the bracket down as far as it will go.

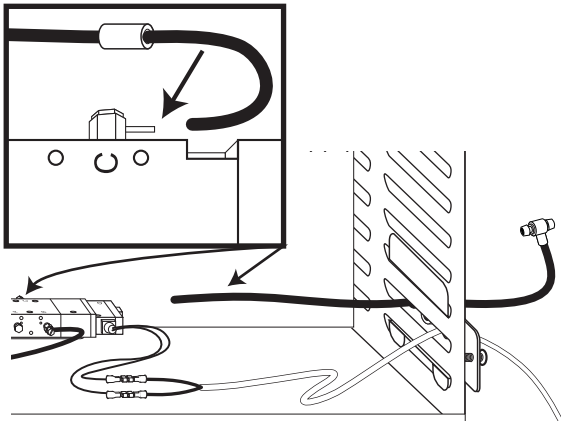


- 15** Slide the bracket down and turn the side screws to brace the assembly against the freezer.

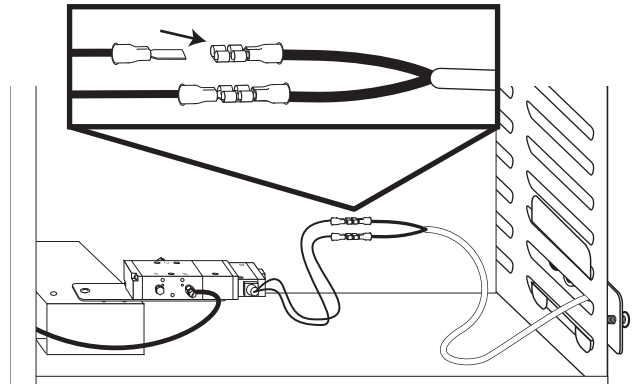


(side view)

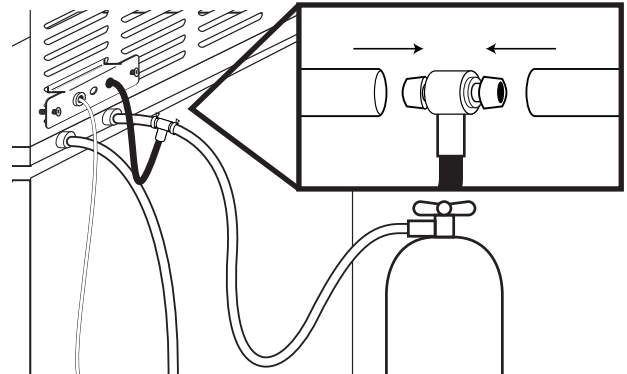
- 17** Insert the C tube through the hole with the black ring on the Cable Mounting Plate Assembly. Connect the tube to the C Valve inside of the freezer.



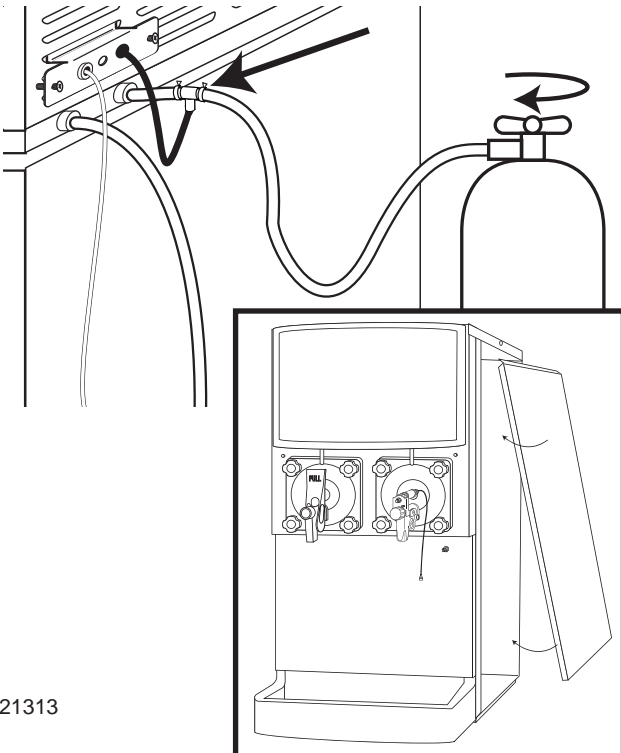
- 16** Connect the female spade connectors of the Rotor Cable D to the male connectors on the D Valve.



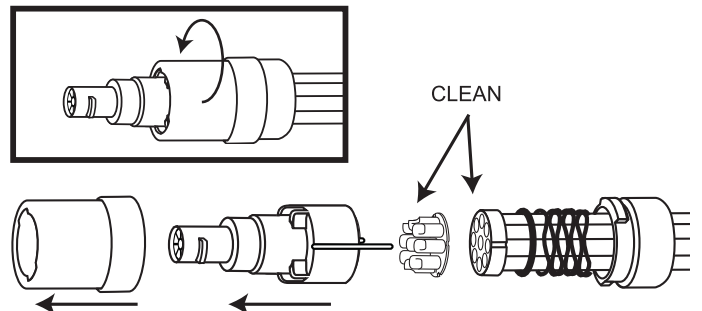
- 18** Ensure the CO2 tank is closed and then cut the supply line about 3" from the rear of the freezer. Install the Tee with the C tube in the CO2 supply line. Use clamps to seal the connections.



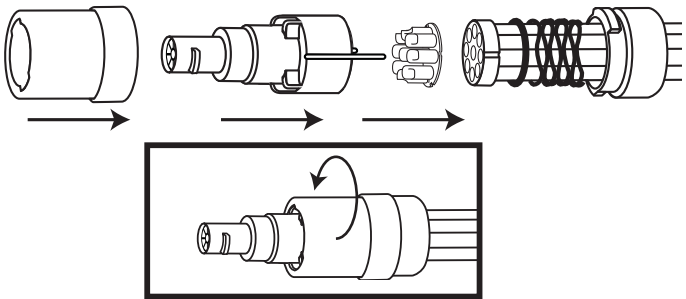
- 19** Open the valve on the CO2 tank and check for any leaks in the connections. Return the side panel to the freezer.



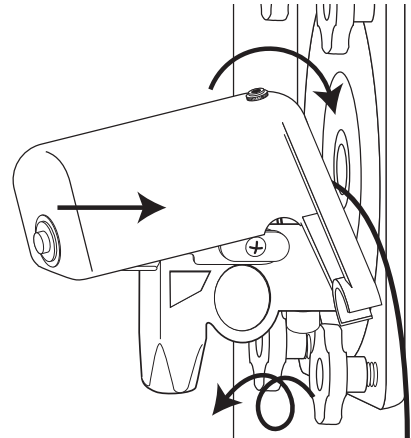
- 20** Unlock and remove the coupler body of the 9-Tube Assembly, and then remove the syrup line manifold. Clean the duckbill check valve and the end of the 9-Tube Assembly if necessary.



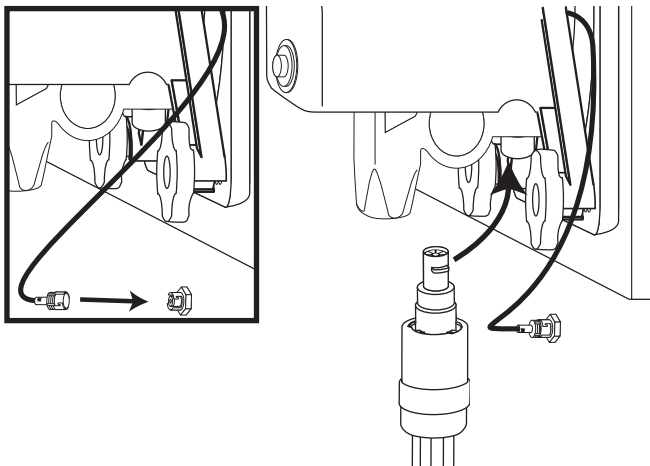
- 21** Install the new INJ 201A manifold into the 9-Tube coupler assembly.



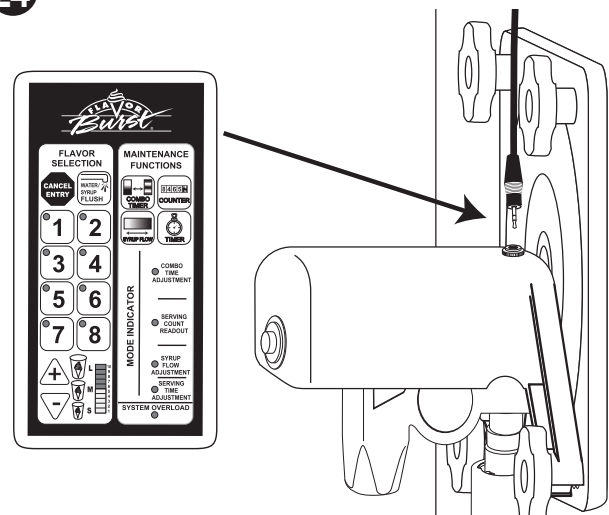
- 22** Loosen the two bottom hand knobs slightly on the door. Install the Draw Switch Housing over the Cylinder Assembly on the draw spout. Tighten the hand knobs to secure.



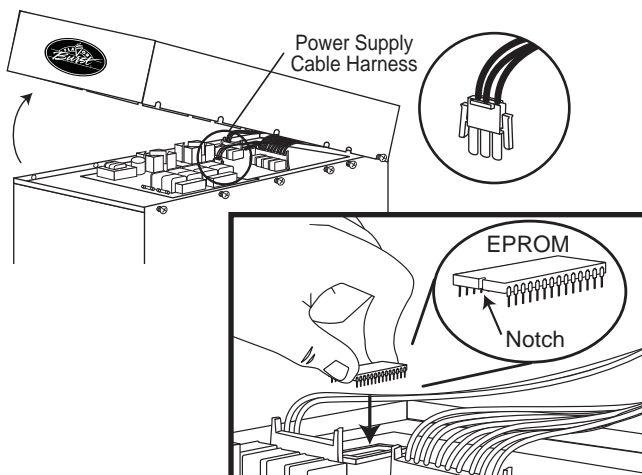
- 23** Connect the Cylinder Assembly line to the panel mount connector. Insert the 9-Tube Assembly into the syrup port on the modified draw spout. Rotate the 9-Tube Assembly until motion stops to secure.



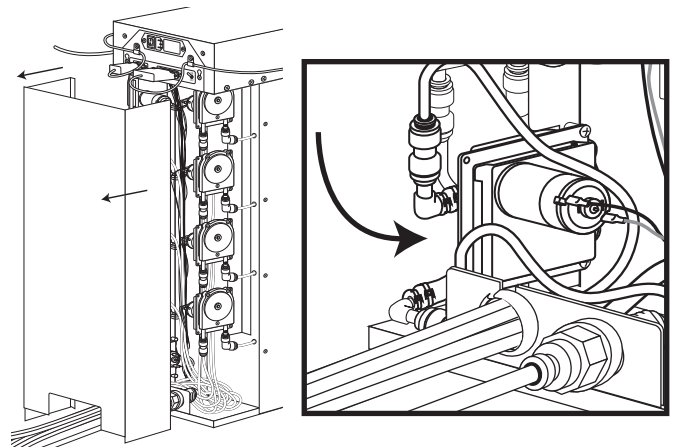
- 24** Plug the keypad stereo plug into the Switch Housing.



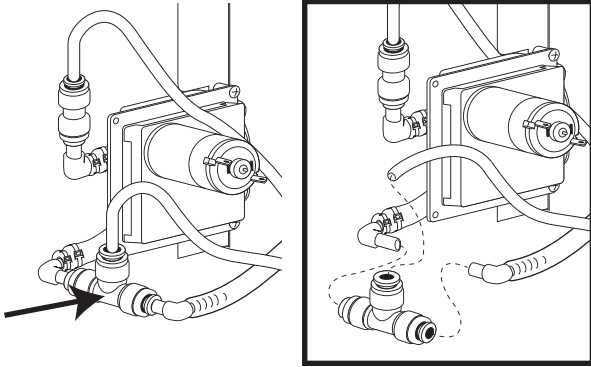
- 25** Remove the cabinet cap and replace the E-prom near the back with the E-prom provided in the kit. Be sure to disconnect and reconnect the Power Supply Cable Harness when removing and installing the cap.



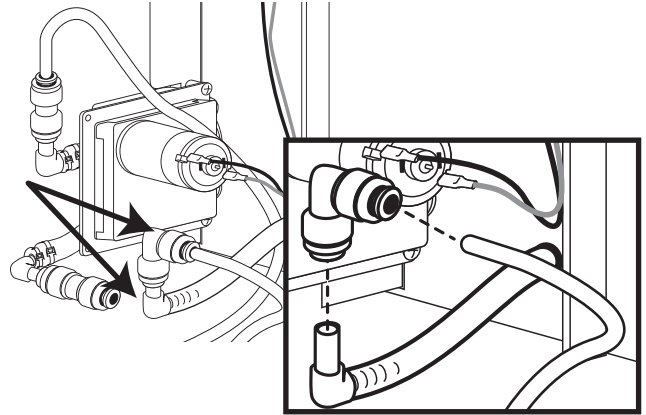
- 26** Remove the back cover of the Flavor Burst cabinet and locate the sanitizer pump near the base.



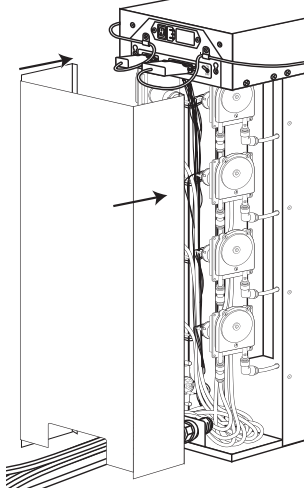
- 27** Disconnect and remove the push-to-connect tee connector from the two elbow connectors and the Pump Flush Tube.



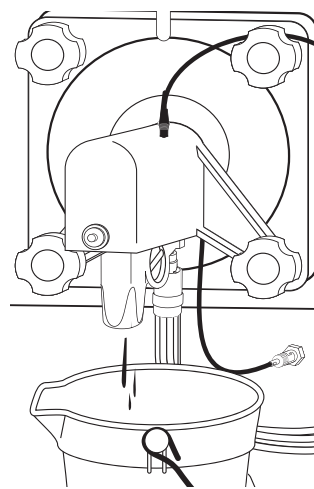
- 28** Install the kit's push-to-connect elbow connector to the Pump Flush Tube and the sanitizer tank tube.



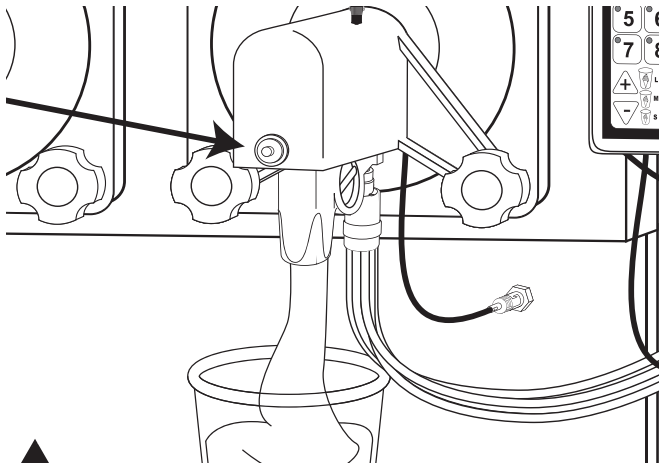
- 29** Install the cabinet cover back onto the Flavor Burst Cabinet.



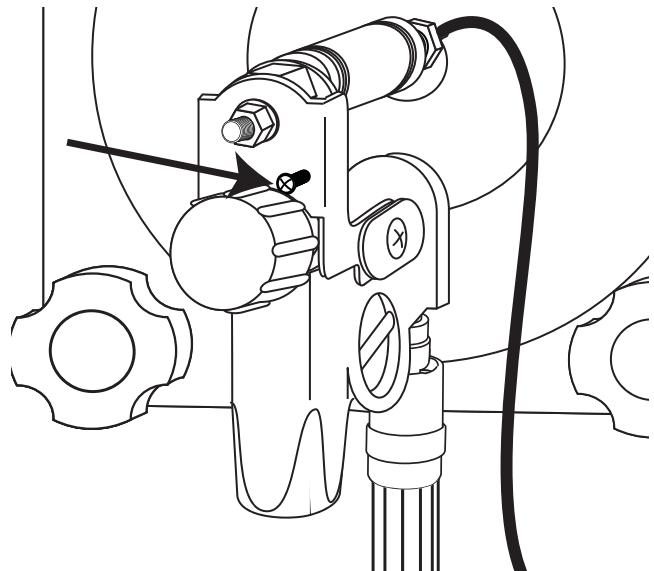
- 30** Fill the freezer hopper with FCB product. While product is freezing down, follow instructions in the Operations Manual to prime the syrup pumps and lines.



- 31** To clear out the spout and ensure everything is working properly, draw a serving. Place a cup beneath the spout. Select flavor(s) from the keypad. Press and hold button to dispense. When the cup is nearly full, release the button and wait for the freezer to finish dispensing.



- 32** To adjust syrup flow, remove the Housing from the Cylinder Assembly. Tighten the flow rate screw (clockwise) to decrease the product flow and increase flavor output. Loosen the screw (counter-clockwise) to increase the product flow and decrease flavor output.



! **NOTE:** PRODUCT WILL DISPENSE APPROXIMATELY 1-2 SECONDS AFTER THE BUTTON IS RELEASED TO CLEAR THE SPOUT OF FLAVORED PRODUCT. THIS PROCESS PURGES THE SPOUT OF LEFTOVER FLAVOR AND REDUCES FLAVOR CARRYOVER TO THE NEXT SERVING.