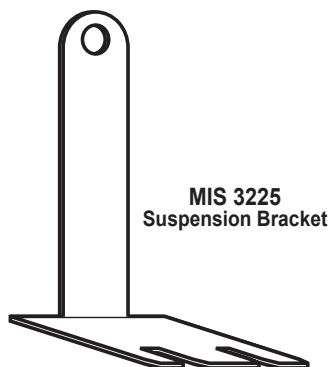
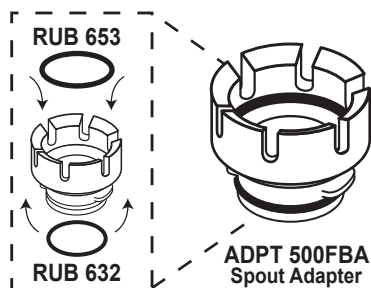


# Flavor Burst™

## ADPT STL-80D Stoelting® Adapter Kit for 2-Post Doors

### Assembly and Installation

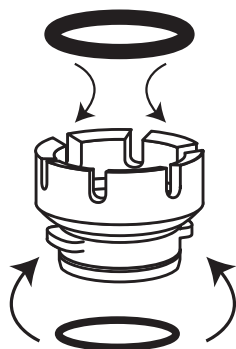
The ADPT STL-80D is designed for use with most Stoelting® Freezers. The kit contains a suspension bracket that is compatible with freezer doors installed on two posts. Be sure to contact your local Flavor Burst® distributor if you have special needs for adapting to your specific Stoelting® model.



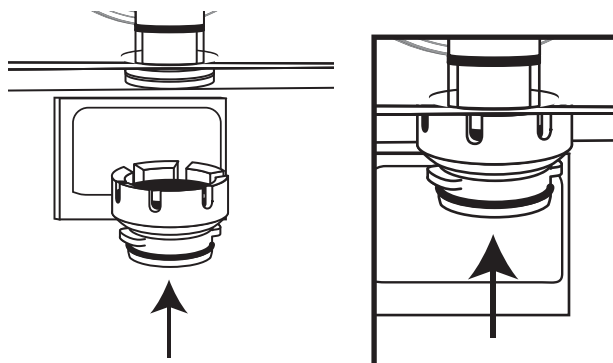
**ELE 430-RE-2**  
Spigot Switch Assembly

**NOTE:** THE ELE 430-RE-2 ASSEMBLY FITS FREEZERS WITH A 1/2" ROUND DRAW-HANDLE. FREEZERS WITH A 1/2" FLAT DRAW-HANDLE REQUIRE THE ELE 430-RE-1 SPIGOT SWITCH ASSEMBLY.

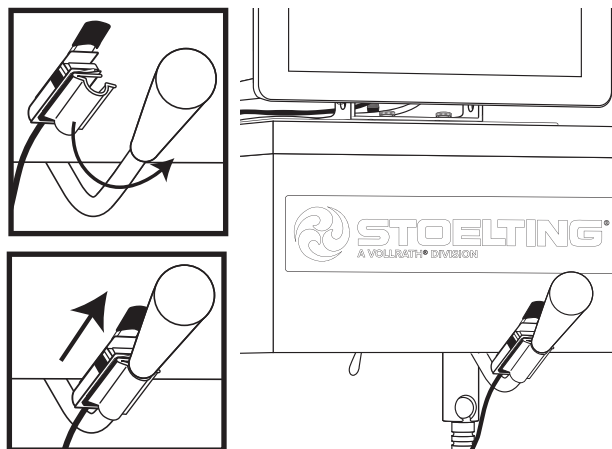
- 1 Install the adapter o-rings in their proper positions on the adapter body.



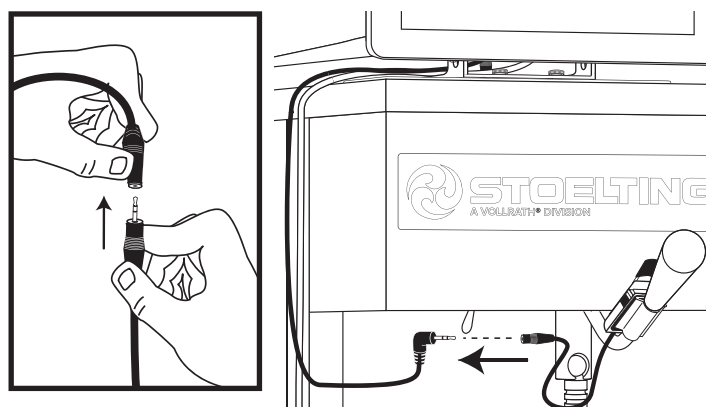
- 2 Install the spout adapter assembly, complete with o-rings, onto the freezer spout. Push up on the adapter with your palm until it snaps on. Ensure it is evenly and fully installed on the spout to prevent leaking.



- 3 Rotate the Switch Assembly onto the draw-handle bar. Position the Switch up towards the end of the draw-handle bar to complete switch installation.



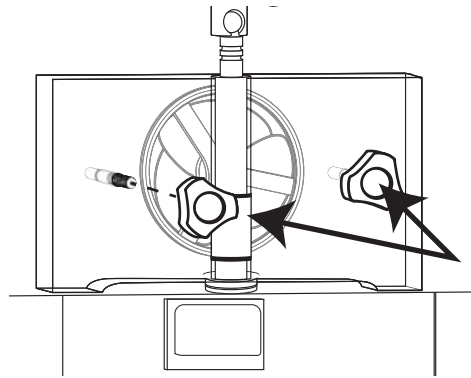
- 4 Connect the switch to the Touch Panel, Touchscreen or Keypad switch cable. Be sure to fully engage the Spigot Switch jack for normal operation. Do not neglect to check this connection during daily startup.



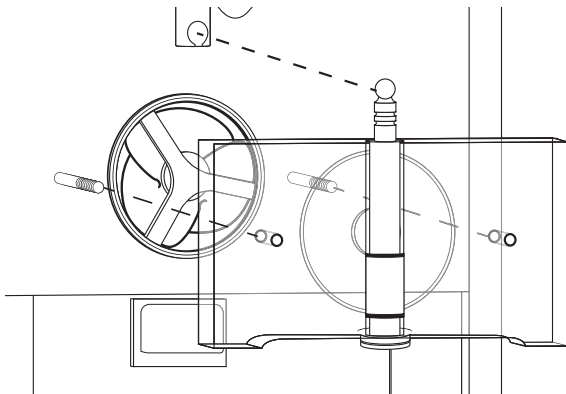
**5 IMPORTANT!**

Ensure the freezer barrel is empty before proceeding. If the freezer has multiple barrels, ensure all barrels are empty before proceeding. The suspension bracket is installed behind the freezer door.

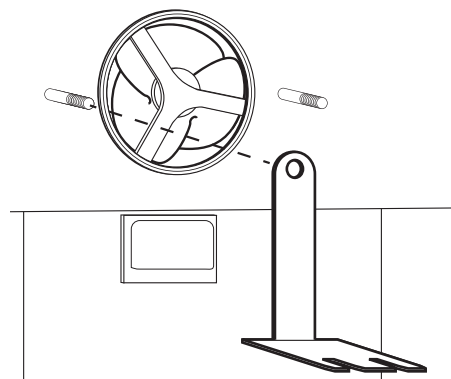
**6** Remove the door knobs from the freezer door.



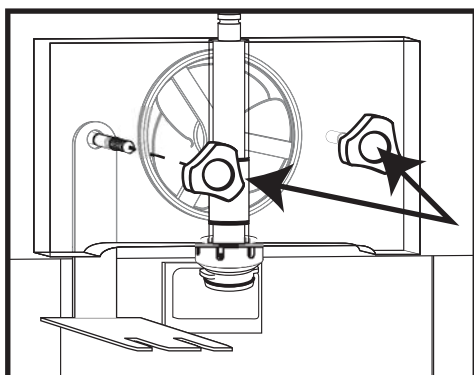
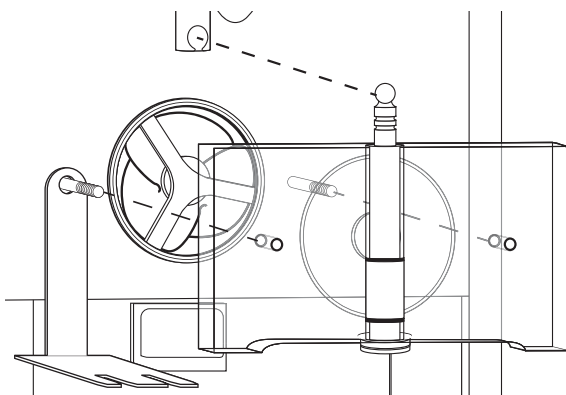
**7** Remove the freezer door from the freezer.



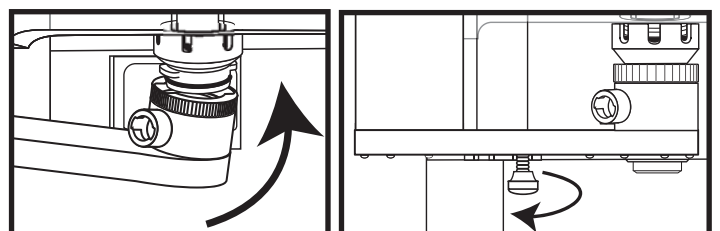
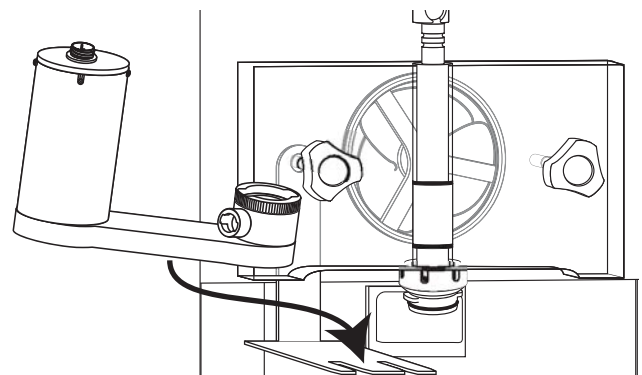
**8** Install the bracket onto the freezer door post closest to where the Drive Motor of the assembly will be.



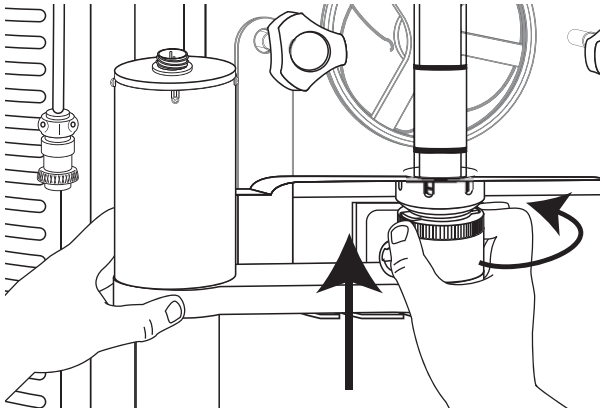
**9** Reinstall the freezer door. Install and tighten the freezer door knobs.



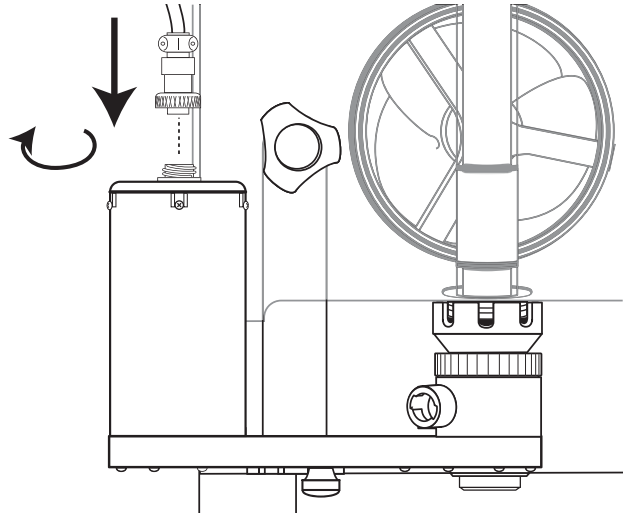
**10** Place the Inejctor Assembly onto the suspension bracket, so that the Gear Box post slides into the one of the bracket openings. Install the Injector Head fully over the spout adapter. Install the Gear Box nut onto the post but do not tighten.



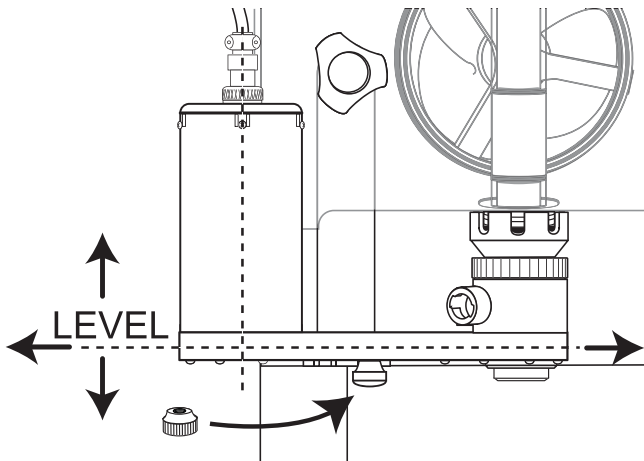
- 11** Push the Injector Head up against the spout and lift the locking collar up and over the adapter tabs. Rotate the locking collar over the tabs to secure.



- 12** Connect the Drive Motor cable to the top of the Motor.



- 13** Ensure the Gear Box of the assembly is level horizontally and the Drive Motor is straight vertically as it rests on the bracket. Ensure the thumb nut is installed the post under the Gear Box and tighten it to secure the assembly in position.



- 14** Insert the syrup line manifold of the 9-Tube Assembly into the Injector Head opening. Rotate it until motion stops, to complete installation.

