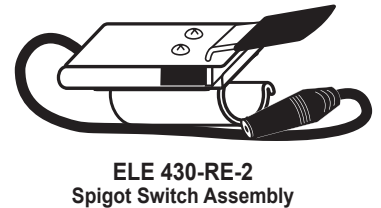
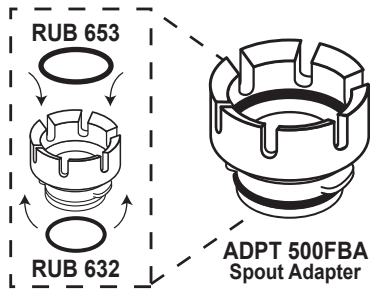


Flavor Burst™

ADPT STL-80C Stoelting® Adapter Kit for 4-Post Doors

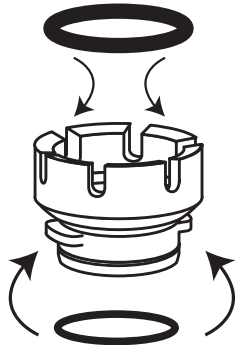
Assembly and Installation

The ADPT STL-80C is designed for use with most Stoelting® Freezers. The kit contains a suspension bracket that is compatible with freezer doors installed on four posts. Be sure to contact your local Flavor Burst® distributor if you have special needs for adapting to your specific Stoelting® model.

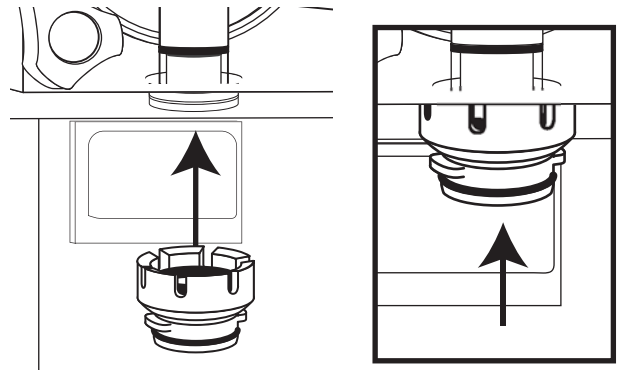


NOTE: THE ELE 430-RE-2 ASSEMBLY FITS FREEZERS WITH A 1/2" ROUND DRAW-HANDLE. FREEZERS WITH A 1/2" FLAT DRAW-HANDLE REQUIRE THE ELE 430-RE-1 SPIGOT SWITCH ASSEMBLY.

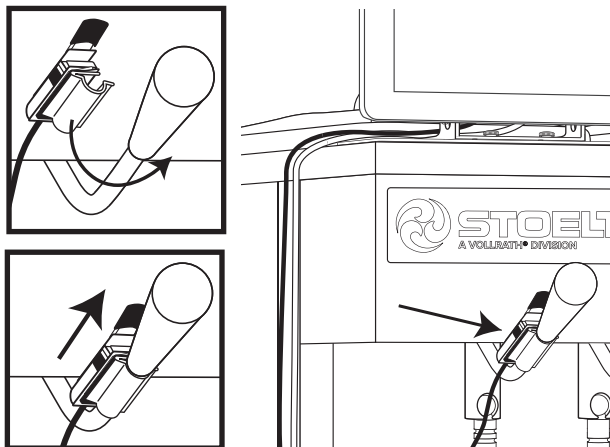
1 Install the adapter o-rings in their proper positions on the adapter body.



2 Install the spout adapter assembly, complete with o-rings, onto the freezer spout. Push up on the adapter with your palm until it snaps on. Ensure it is evenly and fully installed on the spout to prevent leaking.



3 Rotate the Switch Assembly onto the draw-handle bar. Position the Switch up towards the end of the draw-handle bar to complete switch installation.



4 Connect the switch to the Touch Panel, Touchscreen or Keypad switch cable. Be sure to fully engage the Spigot Switch jack for normal operation. Do not neglect to check this connection during daily startup.

