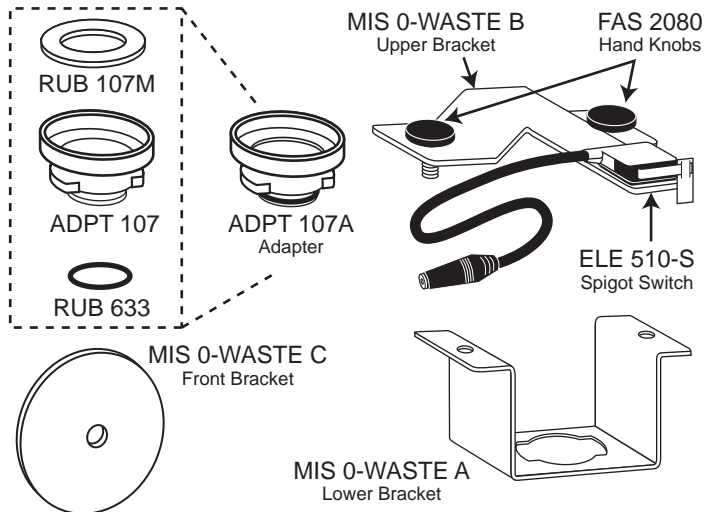


# Flavor Burst™

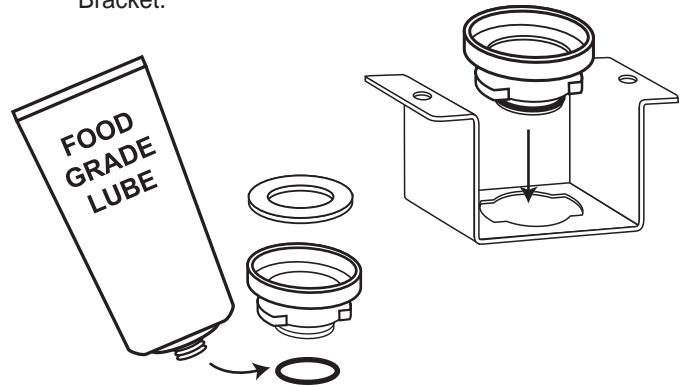
## ADPT 0-WASTE Taylor® 0-Waste Adapter Kit

### Assembly and Installation

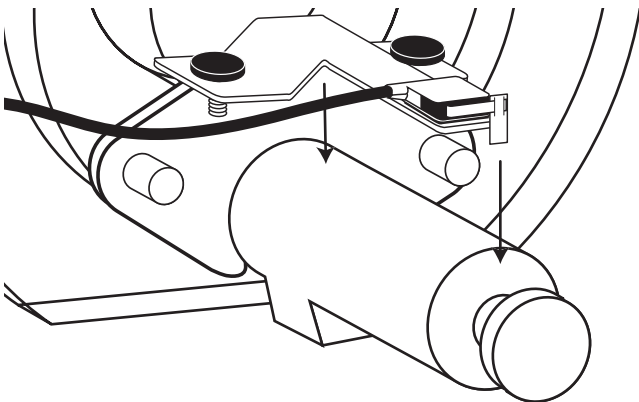
The ADPT 0-WASTE is designed for use with Taylor 'zero-waste' style freezer door spouts such as those used with models RD30, C902, 382, 383, 384.



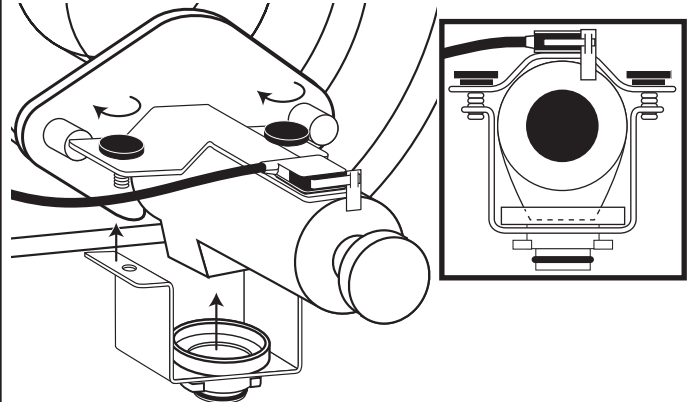
- 1** Lubricate the entire surface of the RUB 633 o-ring, ensure that the Adapter is properly assembled and lubricated, and then place the Adapter into the Lower Bracket.



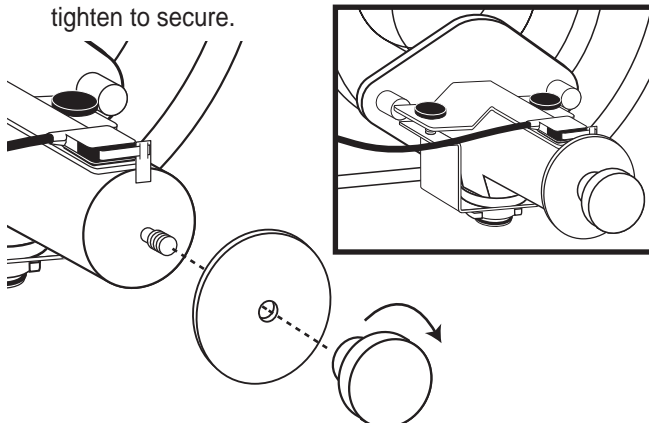
- 2** Set the Upper Bracket Switch Assembly on the freezer door spout so that the switch lever rests just over the front edge.



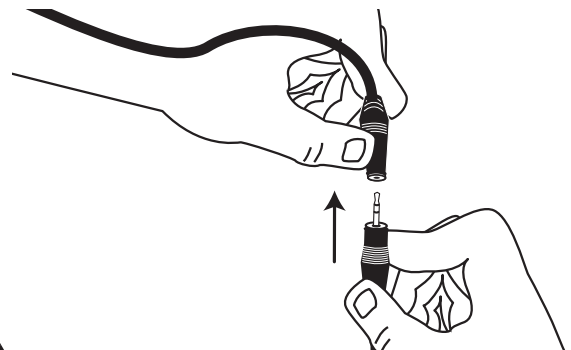
- 3** Place the Adapter and Lower Bracket over the spout opening, then tighten each hand knob evenly to secure the Upper and Lower Brackets.



- 4** Unscrew and remove the draw handle knob and place the Front Bracket onto the threaded post. Then screw the draw handle knob back onto the threaded post and tighten to secure.



- 5** Be sure to fully engage the Spigot Switch jack to the Keypad jack for normal operation and to complete the installation.



**NOTE:** DO NOT NEGLECT TO CHECK THIS CONNECTION DURING DAILY START-UP.