

**Flavor Burst®**  
**Junior Cabinet**  
- Operations Manual Supplement

**MODELS: CTP 40SS-JR**  
**CTP 40BLD-JR**  
**CTP 40BEV-JR**  
**CTP 40FCB-JR**



Manufactured by

Flavor Burst Company  
499 Commerce Drive  
Danville, IN 46122

For general information and to locate a distributor near you, call or visit our website:

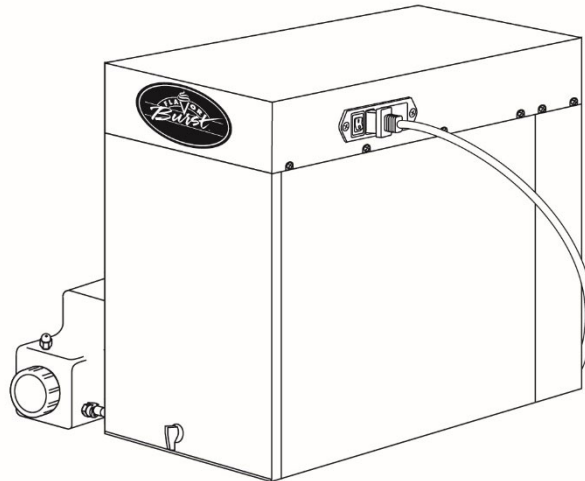
Phone: (317) 745-2952

Toll Free Number: (800) 264-3528

Fax: (317) 745-2377

[www.flavorburst.com](http://www.flavorburst.com)

For pricing, ordering and support, contact one of our qualified distributors.



**PLEASE READ FIRST!**

This supplement is not a full operations manual. It does not contain complete information on installing and maintaining your new system. The purpose of this manual supplement is to provide you with *additional* information and instruction, such as diagrams and part lists, which are either not included or are different from what is shown in the standard manual. Read through these installation and maintenance instructions first and then refer to your standard manual for the rest of the instructions. Be sure to also refer to your standard model to get complete information needed for your system.

All manuals and supplements are available on [www.flavorburst.com](http://www.flavorburst.com)

**PAGE INTENTIONALLY LEFT BLANK**

**TABLE OF CONTENTS**

**FCC Conformity Statement.....3**

**Introduction.....4**

**Safety Precautions.....4**

**Environmental Notices.....5**

**Parts Identification/Function.....7**

**Equipment Setup.....38**

    Installing the Sanitizer Tank.....38

    Filling the Sanitizer Tank.....39

    Power Connections and Power Up – Notes.....40

    EQUIPMENT SETUP – Continued.....40

**Other Important Information.....42**

**Ordering/Service Information.....43**

## **FCC Conformity Statement:**

This device complies with Part 15 of the FCC Rules. Operation is subject to the following two conditions: (1) this device may not cause harmful interference, and (2) this device must accept any interference received, including interference that may cause undesired operation.

Changes or modifications not expressly approved by the party responsible for compliance could void the user's authority to operate the equipment.

NOTE: This equipment has been tested and found to comply with the limits for a Class B digital device, pursuant to Part 15 of the FCC Rules. These limits are designed to provide reasonable protection against harmful interference in a residential installation. This equipment generates, uses and can radiate radio frequency energy and, if not installed and used in accordance with the instructions, may cause harmful interference to radio communications. However, there is no guarantee that interference will not occur in a particular installation. If this equipment does cause harmful interference to radio or television reception, which can be determined by turning the equipment off and on, the user is encouraged to try to correct the interference by one or more of the following measures:

- Reorient or relocate the receiving antenna.
- Increase the separation between the equipment and receiver.
- Connect the equipment into an outlet on a circuit different from that to which the receiver is connected.
- Consult the dealer or an experienced radio/TV technician for help.

### **FCC RF Radiation Exposure and SAR Statements SAR Statement.**

The Flavor 10\* has been tested for body-worn Specific Absorption Rate (SAR) compliance. The FCC has established detailed SAR requirements and has established that these requirements. RF Exposure Information. The radio module has been evaluated under FCC Bulletin OET 65C (01-01) and found to be compliant to the requirements as set forth in CFR 47 Sections, 2.1093, and 15.247 (b) (4) addressing RF Exposure from radio frequency devices. This model meets the applicable government requirements for exposure to radio frequency waves. The highest SAR level measured for this device was 0.293W/kg.

*\*The Flavor 10 is also referred to as the Touch Panel throughout this manual.*

## INTRODUCTION

Congratulations on your purchase of a CTP Junior 4-flavor system! As a food and beverage provider, your customers are your greatest asset. Your primary concern must be the health and welfare of your customers. This manual supplement provides specialty information on the parts of your equipment model that differ from the standard model. Use this supplement with your full standard manual(s) for everyday operating guidelines and procedures. We urge you to follow these instructions carefully and maintain strict sanitary practices in your daily operating routine. *\*Use this manual supplement in conjunction with the standard manual(s) included with your system.\**

The CTP Junior cabinet is an internal cabinet, designed to fit inside the Taylor C201 carts. The system is added to a soft serve / shake / slush / FCB freezer to inject concentrated flavorings throughout the product as it is dispensed. Dispensing Flavor Burst product is very simple. Select a flavor from the Touch Panel and draw the product. The Flavor Burst system will automatically flavor the product at the spout. You can also have multiple flavors per serving. Simply select the flavors from the Touch Panel and draw the product. The system will switch from one flavor to the next in a smooth, continuous motion, layering the serving with different, delicious flavors.

Flavor Burst® syrup is stored within the equipment cabinet in 1 gallon disposable bags. Proper syrup injection rate is maintained by adjusting the flavor level on the Touch Panel.

Components of the Flavor Burst system should be cleaned daily to ensure the highest standard of sanitation. When your equipment is delivered or if it has been unused for more than 24 hours, follow the DAILY OPENING PROCEDURES in your standard operations manual(s).

**NOTE:** PARTS AND PART NUMBERS MAY VARY FROM WHAT IS SHOWN AND LISTED. CONSULT YOUR LOCAL DISTRIBUTOR IF YOU HAVE ANY QUESTIONS CONCERNING DIFFERENCES.

## SAFETY PRECAUTIONS

Always follow these safety precautions when operating the Flavor Burst® system:



The Junior cabinet system must be placed inside a closed cabinet, such as the Taylor C201 cart. Do not leave the Junior cabinet exposed out in the open.



**DO NOT** operate the system without reading this operator's manual. Failure to follow this instruction may result in equipment damage, poor system performance, health hazards, or personal injury.



**DO NOT** operate the system unless it is properly grounded. Failure to follow this instruction may result in electrocution.



**DO NOT** operate the system with larger fuses than specified on the system data label. Failure to follow this instruction may result in electrocution or damage to the machine. Consult your electrician.



**DO NOT** put objects or fingers in the door spout. Failure to follow this instruction may result in contaminated product or personal injury from blade contact.



The Junior cabinet system must be placed on a level surface capable of supporting at least 220 lbs of weight. Failure to comply may result in personal injury or equipment damage.



**DO NOT** place more than 25 lbs of weight on top of the cabinet. Failure to comply may result in personal injury or equipment damage.



**DO NOT** install the unit in an area where a water jet could be used, and do not use a water jet to clean or rinse the system. Failure to follow these instructions may result in serious electrical shock.

**HAZARD COMMUNICATION STANDARD (HCS) – The procedure(s) in this manual include the use of chemical products. These chemical products will be highlighted in bold-faced letters followed by the abbreviation (HCS) in the text portion of the procedure. See the Hazard Communication Standard (HCS) manual for the appropriate Material Safety Data Sheet(s) (MSDS).**



**NOISE LEVEL:** Airborne noise emission does not exceed 70 dB(A) when measured at a distance of 1.0 meter from the surface of the machine and at a height of 1.6 meters from the floor.



**NOTE:** Operations Manual subject to change. Contact your local distributor for most recent updates concerning the CTP Junior system.



**NOTE:** Access to the service area is restricted to persons having safety / hygiene knowledge and practical experience of the appliance.



**NOTE:** This appliance can be used by children aged from 8 years and above and persons with reduced physical, sensory, or mental capabilities or lack of experience and knowledge if they have been given supervision or instruction concerning use of the appliance in a safe way and understand the hazards involved.



**NOTE:** Children shall not play with the appliance.



**NOTE:** Cleaning and user maintenance shall not be made by children without supervision.



**NOTE:** Operate unit under normal ambient temperatures between 60 and 80 degrees Fahrenheit. Unit should never be exposed to freezing temperatures.

### **ENVIRONMENTAL NOTICES**



If the crossed out wheeled bin symbol is affixed to this product, it signifies that this product is compliant with the EU Directive for Waste Electric/Electronic Goods (WEEE) as well as other similar legislation in affect after August 13, 2005. Therefore, it must be collected separately after is use is completed, and cannot be disposed of as unsorted municipal waste.

The user is responsible for returning the product to the appropriate collection facility, as specified by your local codes. For additional information regarding applicable local laws, please contact the municipal facility and/or local distributor.

**PAGE INTENTIONALLY LEFT BLANK**

## PARTS IDENTIFICATION/FUNCTIONS

### General Cabinet Overview (See Figure 1)

| ITEM  | PART NO.       | DESCRIPTION                            | QTY.      | FUNCTION  |
|-------|----------------|--|-----------|---|
| 1     | ELE 906A       | TOUCH PANEL ASSEMBLY WITH BRACKET      | 1         | Flavor Burst unit command center.   |
| 2     | ELE 434        | POWER CABLE                            | 1         | Supplies the electronics board with power.  |
| 3-1   | INJ 424TS      | INJECTOR ASSEMBLY                      | 1*<br>0** | <b>FOR “SS” SYSTEMS:</b> Injects syrups into the product.<br>*1 for 40SS systems.<br>**0 for 40BLD, 40BEV, & 40FCB systems.                         |
| OR... |                |  |           |   |
| 3-2   | INJ 424BLD     | FLAVOR BLEND BLENDING ASSEMBLY         | 1*<br>0** | <b>FOR “BLD” SYSTEMS:</b> Blends syrups into the product.<br>*1 for 40BLD systems.<br>**0 for 40SS, 40BEV, & 40FCB systems.                         |
| OR... |                |  |           |   |
| 3-3   | INJ 424VTS     | VERTICAL BLENDING ASSEMBLY             | 1*<br>0** | <b>FOR “BEV” SYSTEMS:</b> Blends syrups into the product.<br>*1 for 40BEV systems.<br>**0 for 40BLD, 40SS, & 40FCB systems.                         |
| OR... |                |  |           |   |
| 3-4   | ADPT TY80S-FCB | MODIFIED FCB FREEZER SPOUT ASSEMBLY    | 1*<br>0** | <b>FOR “FCB” SYSTEMS:</b> Dispenses product blended with syrups.<br>*1 for 40FCB systems.<br>**0 for 40BLD, 40BEV, & 40SS systems.                  |
| 4     | MIS 3196       | STAINLESS TUBE / CABLE CASING ASSEMBLY | 1         | Attaches the flavor lines and/or cables to the side of the freezer.   |
| 5     | SAN 756        | SANITIZER TANK ASSEMBLY                | 1         | Houses sanitizer cleaning solution.   |
| 6     | CAB 113        | FLAVOR TRAY                            | 4         | Houses syrup bags.  |
| 7-1   | SYR 944        | SYRUP BAG CONNECTOR ASSEMBLY           | 4*<br>0** | <b>FOR “SS” &amp; “BLD” SYSTEMS:</b> Transports syrup from the bag to the pumps.<br>*4 for 40SS & 40BLD systems.<br>**0 for 40BEV & 40FCB systems.  |
| OR... |                |  |           |   |
| 7-2   | SYR 944SH      | SYRUP TUBE ASSEMBLY - SHAKE            | 4*<br>0** | <b>FOR “BEV” &amp; “FCB” SYSTEMS:</b> Transports syrup from the bag to the pumps.<br>*4 for 40BEV & 40FCB systems.<br>**0 for 40SS & 40BLD systems. |
| 8     | N/A            | FLAVOR BURST JUNIOR CABINET            | 1         | Houses 4 syrup trays and bags.  |
| 9     | ELE 525M       | MALE TO MALE 48” SWITCH EXTENSION      | 1         | Connects Touch Panel to the freezer switch.   |
| 10    | MIS 3026S      | TOUCH PANEL CABLE CASING               | 1         | Conceals and protects the Touch Panel cable, as well as attaches it to the freezer.   |



**General Cabinet Overview (Continued)**

| ITEM         | PART NO.    | DESCRIPTION                                    | QTY.      | FUNCTION   |
|--------------|-------------|--|-----------|--|
| 11-1         | SPR 5800A   | SPARE PARTS KIT                                | 1*<br>0** | <b>FOR “SS” SYSTEMS:</b> Houses extra spare parts and wear items.<br>*1 for 40SS systems.<br>**0 for 40BLD, 40BEV, & 40FCB svstems.  |
| <i>OR...</i> |             |  |           |  |
| 11-2         | SPR 5800BLD | SPARE PARTS KIT<br>TOUCHSCREEN FLAVOR<br>BLEND | 1*<br>0** | <b>FOR “BLD” SYSTEMS:</b> Houses extra spare parts and wear items.<br>*1 for 40BLD systems.<br>**0 for 40SS, 40BEV, & 40FCB systems. |
| <i>OR...</i> |             |  |           |  |
| 11-3         | SPR 5800BEV | SPARE PARTS KIT<br>TOUCHSCREEN BEVERAGE        | 1*<br>0** | <b>FOR “BEV” SYSTEMS:</b> Houses extra spare parts and wear items.<br>*1 for 40BEV systems.<br>**0 for 40BLD, 40SS, & 40FCB systems. |
| <i>OR...</i> |             |  |           |  |
| 11-4         | SPR 5800FCB | SPARE PARTS KIT<br>TOUCHSCREEN FCB             | 1*<br>0** | <b>FOR “FCB” SYSTEMS:</b> Houses extra spare parts and wear items.<br>*1 for 40FCB systems.<br>**0 for 40BLD, 40BEV, & 40SS systems. |

**PAGE INTENTIONALLY LEFT BLANK**

## General Cabinet Overview

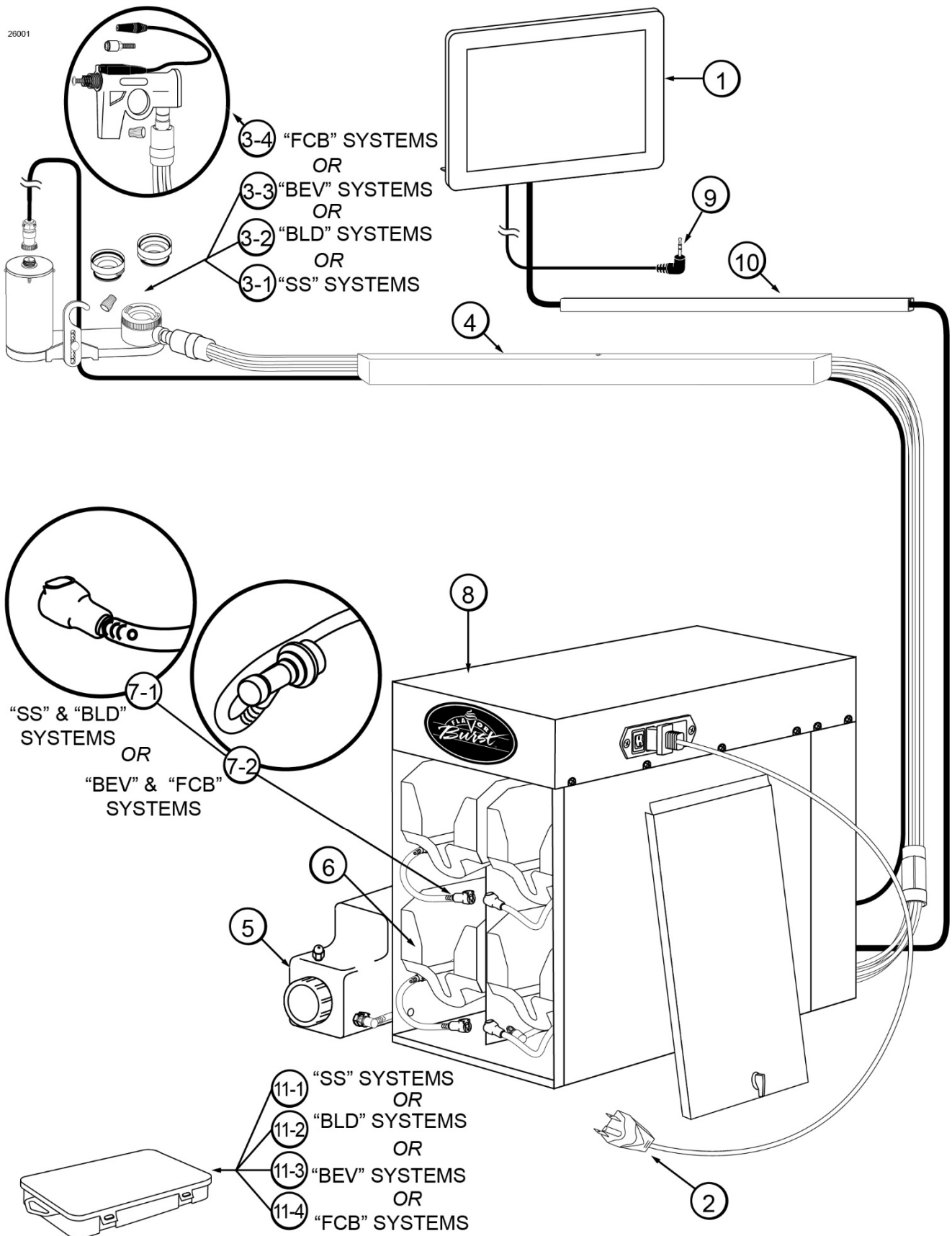


Figure 1

## Cabinet (See Figure 2)

| ITEM  | PART NO.    | DESCRIPTION                                     | QTY.      | FUNCTION   |
|-------|-------------|---|-----------|--|
| 1     | N/A         | ELECTRONICS SYSTEM – LOW PROFILE                | 1         | Houses microprocessor and electronics.   |
| 2     | CAB 135R-4A | RIGHT SIDE PANEL - JUNIOR                       | 1         | Holds tray support brackets and panel brackets.  |
| 3     | CAB 145     | TRAY SUPPORT BRACKET                            | 4         | Supports flavoring trays.  |
| 4     | FAS 2024    | 8-32 X 1/4 PAN HEAD                             | 22        | Fastens panel brackets to divider panel, secures sides.  |
| 5     | FAS 2014    | 8-32 X 1/2" PAN HEAD                            | 25        | Attaches top panel, back cover, and feet to cabinet.   |
| 6-1   | SYR 944     | SYRUP BAG CONNECTOR ASSEMBLY – SOFT SERVE       | 4*<br>0** | <b>FOR “SS” &amp; “BLD” SYSTEMS:</b> Transports syrup from the bag to the pumps.<br>*4 for 80SS, 80BLD systems.<br>**0 for 80BEV, 80FCB systems.         |
| OR... |             |   |           |  |
| 6-2   | SYR 944SH   | SYRUP TUBE ASSEMBLY - SHAKE                     | 4*<br>0** | <b>FOR “BEV” &amp; “FCB” SYSTEMS:</b> Transports syrup from the bag to the pumps.<br>*4 for 80BEV, 80FCB systems.<br>**0 for 80SS, 80BLD systems.        |
| 7     | ELE 932     | PUMP & SANITIZER CABLE HARNESS                  | 1         | Provides power to the syrup and sanitizer pumps.   |
| 8     | MIS 3066    | MINI BUSHING                                    | 2         | Protects flush tube.   |
| 9-1   | MIS 3028-80 | SANITIZER FLUSH TUBE ASSEMBLY – SOFT SERVE      | 1*<br>0** | <b>FOR “SS” &amp; “BLD” SYSTEMS:</b> Flushes flavor lines with sanitizer when attached.<br>*1 for 80SS, 80BLD systems.<br>**0 for 80BEV, 80FCB systems.  |
| OR... |             |   |           |  |
| 9-2   | MIS 3028-S  | SANITIZER FLUSH TUBE ASSEMBLY – FROZEN BEVERAGE | 1*<br>0** | <b>FOR “BEV” &amp; “FCB” SYSTEMS:</b> Flushes flavor lines with sanitizer when attached.<br>*1 for 80BEV, 80FCB systems.<br>**0 for 80SS, 80BLD systems. |
| 10    | CAB 139-4   | FRONT DOOR PANEL – JUNIOR                       | 1         | Provides easy access to syrup trays  |
| 11    | CAB 136-4A  | REAR PUMP COVER - JUNIOR                        | 1         | Back panel to cover pumps.   |
| 12    | FIX 1023    | 3/16" X 3/16" BARB TUBE CONNECT                 | 1         | Splices together flush tubes.  |
| 13    | CAB 134-4   | DIVIDER PANEL - JUNIOR                          | 1         | Holds tray support brackets and divides flavor trays.  |
| 14    | CAB 144R    | RIGHT PANEL BRACKET                             | 1         | Holds tray support rails.  |
| 15    | CAB 144L    | LEFT PANEL BRACKET                              | 1         | Holds tray support rails.  |
| 16    | CAB 143     | LATCH BRACKET                                   | 1         | Provides latching tab for front panel latch.   |
| 17    | FAS 2001    | FRONT DOOR PANEL LATCH                          | 1         | Latches front door to cabinet front.   |
| 18    | SYR 927-4   | INTERNAL 5-TUBE ASSEMBLY - JUNIOR               | 1         | Transports syrup from bags to flavor 9-Tube Assembly.  |
| 19    | SAN 748     | PERISTALTIC SANITIZER PUMP                      | 1         | Pumps sanitizer solution to flush tube and sanitizer line.   |

**Cabinet (Continued)**

| ITEM  | PART NO.    | DESCRIPTION                         | QTY.      | FUNCTION  |
|-------|-------------|-------------------------------------|-----------|---|
| 20-1  | SYR 307     | PERISTALTIC SYRUP PUMP – SOFT SERVE | 4*<br>0** | <b>FOR “SS” &amp; “BLD” SYSTEMS:</b> Pumps syrup from flavor bags into flavor lines.<br>*4 for 80SS, 80BLD systems.<br>**0 for 80BEV, 80FCB systems.  |
| OR... |             |                                     |           |   |
| 20-2  | SYR 926     | PERISTALTIC SYRUP PUMP - BEVERAGE   | 4*<br>0** | <b>FOR “BEV” &amp; “FCB” SYSTEMS:</b> Pumps syrup from flavor bags into flavor lines.<br>*4 for 80BEV, 80FCB systems.<br>**0 for 80SS, 80BLD systems. |
| 21    | CAB 155L-4  | PUMP MOUNTING STRIP LEFT - JUNIOR   | 1         | Support for syrup trays and spacing between panels.   |
| 22    | CAB 155R-4  | PUMP MOUNTING STRIP RIGHT - JUNIOR  | 1         | Support for syrup trays and spacing between panels.   |
| 23    | FAS 2037    | TAPPED NYLON SPACER                 | 6         | Secures screw to center panel, and support for trays.   |
| 24    | FAS 2032    | STANDARD NYLON SPACERS              | 6         | Provides extra support for flavor trays.  |
| 25    | FAS 2034    | 8-32 X 3/4" MACHINE SCREW           | 6         | Attaches bushings to divider panel.   |
| 26    | MIS 3067    | OPEN/CLOSED BUSHING                 | 1         | Strain relief for internal 9-Tube Assembly.   |
| 27    | FIX 1033    | 1/4" X 1/4" BLKHD (PUSH-TO-CONNECT) | 1         | Connects Sanitizer Tank tube to the unit.   |
| 28    | TUB 803     | TUBING-PER FOOT                     | 1         | Transports sanitizer solution from tank to pump.  |
| 29    | CAB 133     | BASE PANEL                          | 1         | Attaches the bottom of the inner and side panels.   |
| 30    | RUB 618     | RUBBER BUMPER WITH WASHER           | 6         | Provides spacing between cabinet base and table.  |
| 31    | FAS 2035    | 8-32 NUTS - EXT. LOCK WASHER        | 6         | Attaches to screw and holds rubber bumper in place.   |
| 32    | MIS 3074    | SHORTY PLUG #1672                   | 6         | Covers screw hole in rubber bumper.   |
| 33    | FAS 2040    | 6-32 X 1/4" TAPPING SCREW           | 12        | Secures tray support bracket to side panels.  |
| 34    | CAB 135L-4A | LEFT SIDE PANEL - JUNIOR            | 1         | Holds tray support brackets and panel brackets.   |

**PAGE INTENTIONALLY LEFT BLANK**

## Cabinet

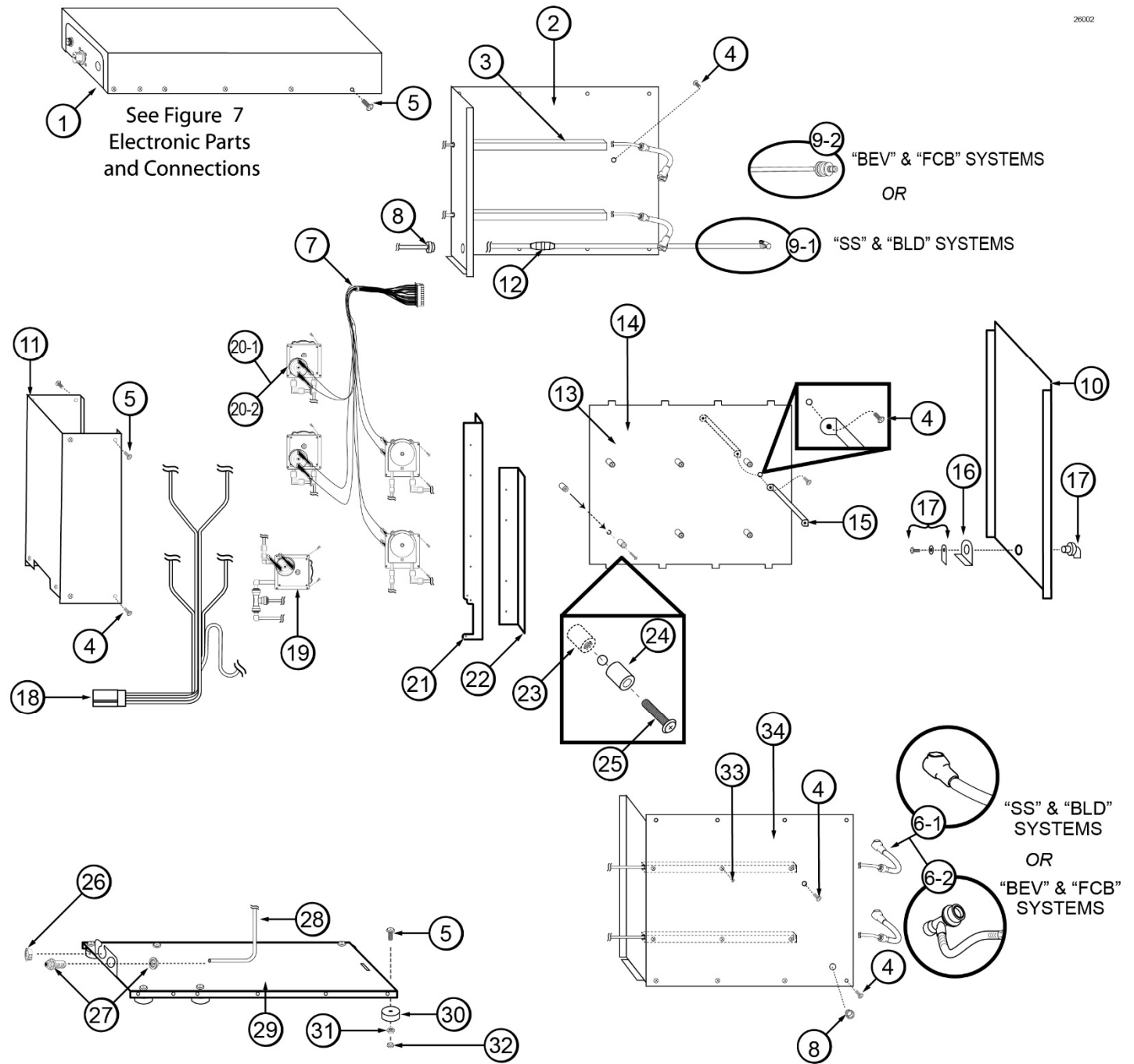


Figure 2

**“SS” Injector Assembly and Related Parts (See Figure 3A)**

| ITEM     | PART NO.    | DESCRIPTION  | QTY.      | FUNCTION  |
|----------|-------------|--|-----------|---|
| <b>A</b> | INJ 424TS   | INJECTOR ASSEMBLY WITH SYRUP LINES, ADAPTER, & BRACKET | 1*<br>0** | <b>FOR “SS” SYSTEMS:</b> Injects syrups into the product.<br>*1 for 80SS systems.<br>**0 for 80BEV, 80BLD, 80FCB systems. |
| 1        | INJ 422     | INJECTOR HEAD ASSEMBLY                                 | 1         | Connects flavor line to inject syrups into product.   |
| 1A       | RUB 652-RSS | SMALLER SYRUP PORT O-RING                              | 1 ea.     | Provides sealed cavity inside syrup port.   |
| 1B       | RUB 651     | INJECTOR HEAD O-RING 2-020                             | 1 ea.     | Provides a sealed cavity.   |
| 1C       | RUB 660     | LARGER SYRUP PORT O-RING                               | 1 ea.     | Provides sealed cavity inside syrup port.   |
| 2        | INJ 321     | GEAR CARTRIDGE ASSEMBLY                                | 1         | Rotates product for even syrup distribution.  |
| 3        | SYR 932     | 6' 9-TUBE ASSEMBLY                                     | 1         | Supplies syrup to Injector Head from pumps.   |
| 3A       | FAS 2051    | ROLLED FLANGE EYELET                                   | 18 ea.    | Provides tension in syrup line to affix to line coupler.  |
| 3B       | ROT 510     | LINE COUPLER   | 2 ea.     | Holds flavor lines in place.  |
| 3C       | ROT 515-C   | 9-TUBE ASSEMBLY WAVE SPRING                            | 1 ea.     | Provides tension between tube connectors.   |
| 3D       | INJ 116     | LINE COUPLER NUT - BLACK                               | 1 ea.     | Attaches flavor tubes to flavor manifold.   |
| 3E       | SYR 901     | 6' 9-TUBE ASSEMBLY TUBES                               | 9 ea.     | Brings syrup from pump to Injector Head.  |
| 3F       | ROT 511     | LINE COUPLER NUT                                       | 1 ea.     | Connects flavor lines to the internal 9-Tube Assembly.  |
| 3G       | RUB 602     | 9-POS TUBE CONN. GASKET                                | 1 ea.     | Provides sealed cavity.   |
| 4        | INJ 117     | TUBE CONNECTOR BODY –BLACK                             | 1         | Secures flavor line manifold to flavor lines.   |
| 5        | MIS 3142    | FLAVOR LINE DUST CAP – FB 80                           | 1         | Covers syrup manifold when not connected.   |
| 6        | INJ 201A    | SYRUP MANIFOLD - BLACK                                 | 1         | Connects flavor line to Injector Head.  |
| 7        | RUB 601     | 9-POS DUCKBILL CHECK VALVE                             | 1         | Provides sealed cavity and prevents syrup leakage.  |
| 8        | MIS 3143    | SUSPENSION BRACKET ASSEMBLY                            | 1         | Secures Injector Assembly to freezer door.  |
| 8A       | FAS 2107    | INJECTOR BRACKET KNOB                                  | 1 ea.     | Secures the two bracket pieces.   |
| 8B       | MIS 3143A   | SUSPENSION BRACKET PART A                              | 1 ea.     | Attaches to freezer door bolts to hang Injector Assembly.   |
| 8C       | MIS 3143B   | SUSPENSION BRACKET PART B                              | 1 ea.     | Secures Bracket Assembly to Injector Assembly.  |
| 8D       | MIS 3144    | NYLON SHOULDER WASHER                                  | 1 ea.     | Allows free horizontal movement for bracket   |
| 8E       | ROT 535     | ROTOR BRACKET SPRING WASHER                            | 1 ea.     | Allows space between hanging and base brackets  |



**“SS” Injector Assembly and Related Parts (Continued)**

| ITEM | PART NO.    | DESCRIPTION                     | QTY.  | FUNCTION   |
|------|-------------|---------------------------------|-------|--|
| 9    | INJ 323TS   | INJECTOR ASSEMBLY - NO HEAD     | 1     | Powers Injector system.                                |
| 9A   | INJ 330TS   | INJECTOR MOTOR ASSEMBLY         | 1 ea. | Supplies power to Motor which turns gears.             |
| 9B   | INJ 331     | INJECTOR GEARBOX ASSEMBLY       | 1 ea. | Gears turn Gear Cartridge for even syrup distribution. |
| 9C   | FAS 2023    | ACCESSORY MOUNTING BRACKET KNOB | 1 ea. | Secures base Mounting Bracket to Gear Box.             |
| 10   | ADPT 8750-A | CROWN ADAPTER WITH O-RINGS      | 1     | Attaches Injector Assembly to freezer door.            |
| 10A  | RUB 659     | TAYLOR ADAPTER O-RING 8750      | 1 ea. | Creates tension to secure adapter to freezer door.     |
| 10B  | ADPT 8750   | CROWN ADAPTER WITOUT O-RINGS    | 1 ea. | Attaches Injector Assembly to freezer door.            |
| 10C  | RUB 632     | INJECTOR ADAPTER O-RING         | 1 ea. | Creates tension to secure adapter to Injector Head.    |
| 11   | ADPT 101A   | INJECTOR ADAPTER W/ O-RINGS     | 1     | Attaches Injector Assembly to freezer door.            |
| 11A  | RUB 642     | ADAPTER O-RING                  | 1 ea. | Creates tension to secure adapter to freezer door.     |
| 11B  | RUB 640     | FLAT ADAPTER GASKET             | 1 ea. | Provides sealed cavity inside adapter.                 |
| 11C  | ADPT 101    | INJECTOR ADAPTER                | 1 ea. | Attaches Injector Assembly to freezer.                 |
| 11D  | RUB 632     | INJECTOR ADAPTER O-RING         | 1 ea. | Creates tension to secure adapter to Injector Head.    |

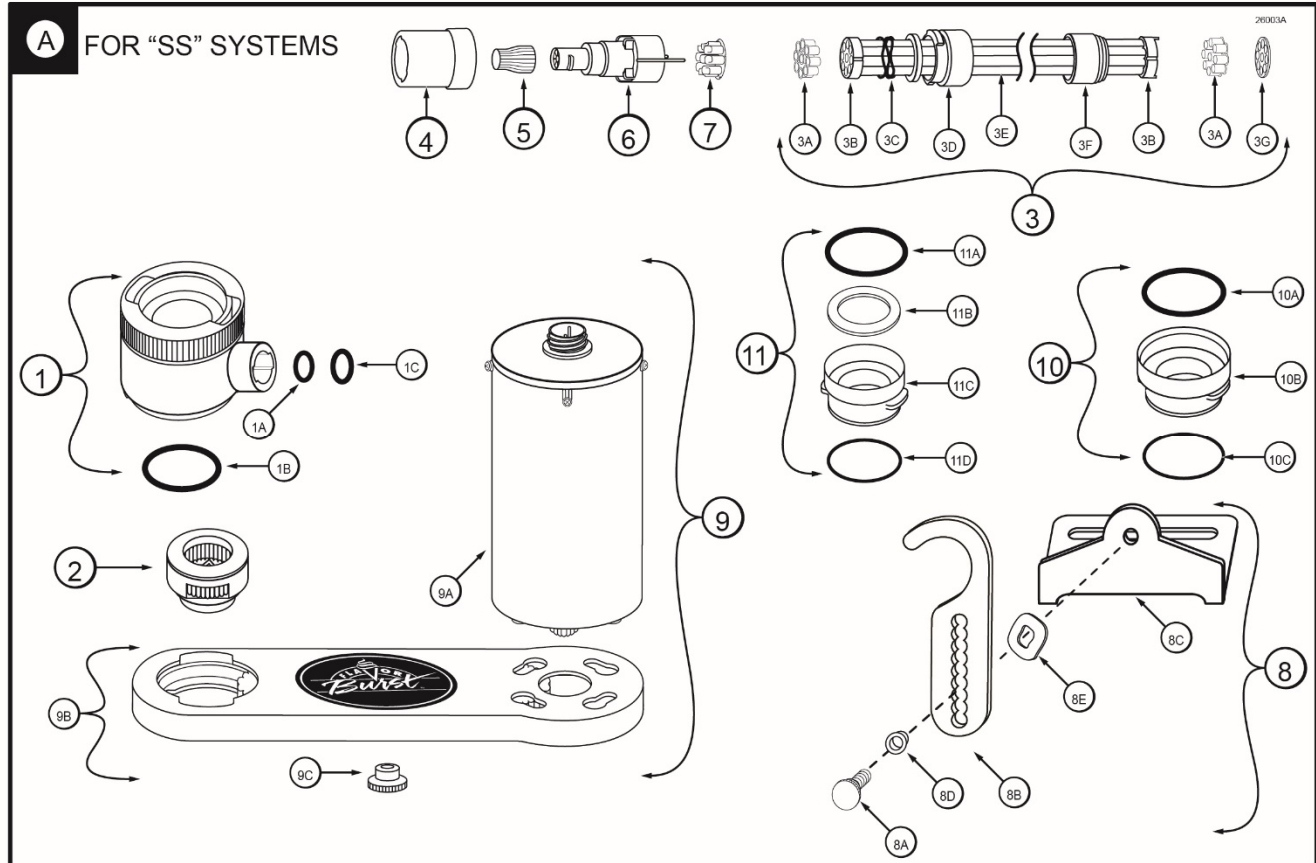


Figure 3A

**“BLD” Blending Assembly and Related Parts (See Figure 3B)**

| ITEM     | PART NO.    | DESCRIPTION   | QTY.      | FUNCTION  |
|----------|-------------|---|-----------|---|
| <b>B</b> | INJ 424BLD  | FLAVOR BLEND BLENDING ASSEMBLY WITH SYRUP LINES, ADAPTER, & BRACKET | 1*<br>0** | <b>FOR “BLD” SYSTEMS:</b> Blends syrups into the product.<br>*1 for 80BLD systems.<br>**0 for 80SS, 80BEV, 80FCB systems. |
| 1        | ADPT 101A   | INJECTOR ADAPTER W/ O-RINGS   | 1         | Attaches Blending Assembly to freezer door.   |
| 1A       | RUB 642     | ADAPTER O-RING  | 1 ea.     | Creates tension to secure adapter to freezer door.  |
| 1B       | RUB 640     | FLAT ADAPTER GASKET   | 1 ea.     | Provides sealed cavity inside adapter.  |
| 1C       | ADPT 101    | INJECTOR ADAPTER  | 1 ea.     | Attaches Blending Assembly to freezer.  |
| 1D       | RUB 632     | INJECTOR ADAPTER O-RING   | 1 ea.     | Creates tension to secure adapter to Blending Head.   |
| 2        | INJ 422C    | BLENDING HEAD ASSEMBLY  | 1         | Connects flavor line to inject syrups into product.   |
| 2A       | RUB 652-RSS | SMALLER SYRUP PORT O-RING   | 1 ea.     | Provides sealed cavity inside syrup port.   |
| 2B       | RUB 651     | BLENDING HEAD O-RING 2-020  | 1 ea.     | Provides a sealed cavity.   |
| 2C       | RUB 660     | LARGER SYRUP PORT O-RING  | 1 ea.     | Provides sealed cavity inside syrup port.   |
| 3        | INJ 321C    | GEAR CARTRIDGE ASSEMBLY   | 1         | Rotates product for even syrup distribution.  |
| 4        | SYR 932     | 6' 9-TUBE ASSEMBLY  | 1         | Supplies syrup to Blending Head from pumps.   |
| 4A       | FAS 2051    | ROLLED FLANGE EYELET  | 18 ea.    | Provides tension in syrup line to affix to line coupler.  |
| 4B       | ROT 510     | LINE COUPLER  | 2 ea.     | Holds flavor lines in place.  |
| 4C       | ROT 515-C   | 9-TUBE ASSEMBLY WAVE SPRING   | 1 ea.     | Provides tension between tube connectors.   |
| 4D       | INJ 116     | LINE COUPLER NUT - BLACK  | 1 ea.     | Attaches flavor tubes to flavor manifold.   |
| 4E       | SYR 901     | 6' 9-TUBE ASSEMBLY TUBES  | 9 ea.     | Brings syrup from pump to Blending Head.  |
| 4F       | ROT 511     | LINE COUPLER NUT  | 1 ea.     | Connects flavor lines to the internal 9-Tube Assembly.  |
| 4G       | RUB 602     | 9-POS TUBE CONN. GASKET   | 1 ea.     | Provides sealed cavity.   |
| 5        | INJ 117     | TUBE CONNECTOR BODY –BLACK  | 1         | Secures flavor line manifold to flavor lines.   |
| 6        | MIS 3142    | FLAVOR LINE DUST CAP – FB 80  | 1         | Covers syrup manifold when not connected.   |
| 7        | INJ 201A    | SYRUP MANIFOLD - BLACK  | 1         | Connects flavor line to Blending Head.  |
| 8        | RUB 601     | 9-POS DUCKBILL CHECK VALVE  | 1         | Provides sealed cavity and prevents syrup leakage.  |
| 9        | INJ 331     | BLENDING GEARBOX ASSEMBLY   | 1         | Gears turn Gear Cartridge for even syrup distribution.  |
| 9A       | FAS 2023    | ACCESSORY MOUNTING BRACKET KNOB                                     | 1 ea.     | Secures base Mounting Bracket to Gear Box.  |
| 10       | INJ 330HSB  | HIGH SPEED BLENDING MOTOR ASSEMBLY                                  | 1         | Powers Blending system.   |

**“BLD” Blending Assembly and Related Parts (Continued)**

| ITEM | PART NO.    | DESCRIPTION                           | QTY.  | FUNCTION  |
|------|-------------|---------------------------------------|-------|---|
| 11   | MIS 3147    | SUSPENSION BRACKET FOR BLEND ASSEMBLY | 1     | Secures Blending Assembly to freezer door.                                      |
| 11A  | MIS 3147A   | DOOR BRACKET                          | 1 ea. | Secures the bracket to the freezer door.  |
| 11B  | MIS 3147B   | BASE BRACKET                          | 1 ea. | Supports the Gear Box.  |
| 11C  | MIS 3147C   | VERTICAL ADJUSTMENT BRACKET           | 1 ea. | Secures the door and base brackets and creates a hinge on the bracket assembly. |
| 11D  | FAS 2107    | THUMB KNOB                            | 2 ea. | Secures the base bracket to the vertical adjustment bracket.                    |
| 11E  | FAS 2024    | 8-32 x 1/4 PAN HEAD SCREW             | 2 ea. | Secures the door bracket to the vertical adjustment bracket.                    |
| 11F  | FAS 2035    | 8-32 NUT EXT. WASHER                  | 2 ea. | Locks the screws in place so they don't loosen.                                 |
| 11G  | FAS 2177    | NYLON LOCKING NUT                     | 3 ea. | Secures the suspension bracket to the Gear Box.                                 |
| 12   | ADPT 8750-A | CROWN ADAPTER WITH O-RINGS            | 1     | Attaches Blending Assembly to freezer door.                                     |
| 12A  | RUB 659     | TAYLOR ADAPTER O-RING 8750            | 1 ea. | Creates tension to secure adapter to freezer door.                              |
| 12B  | ADPT 8750   | CROWN ADAPTER WITOUT O-RINGS          | 1 ea. | Attaches Blending Assembly to freezer door.                                     |
| 12C  | RUB 632     | INJECTOR ADAPTER O-RING               | 1 ea. | Creates tension to secure adapter to Blending Head.                             |

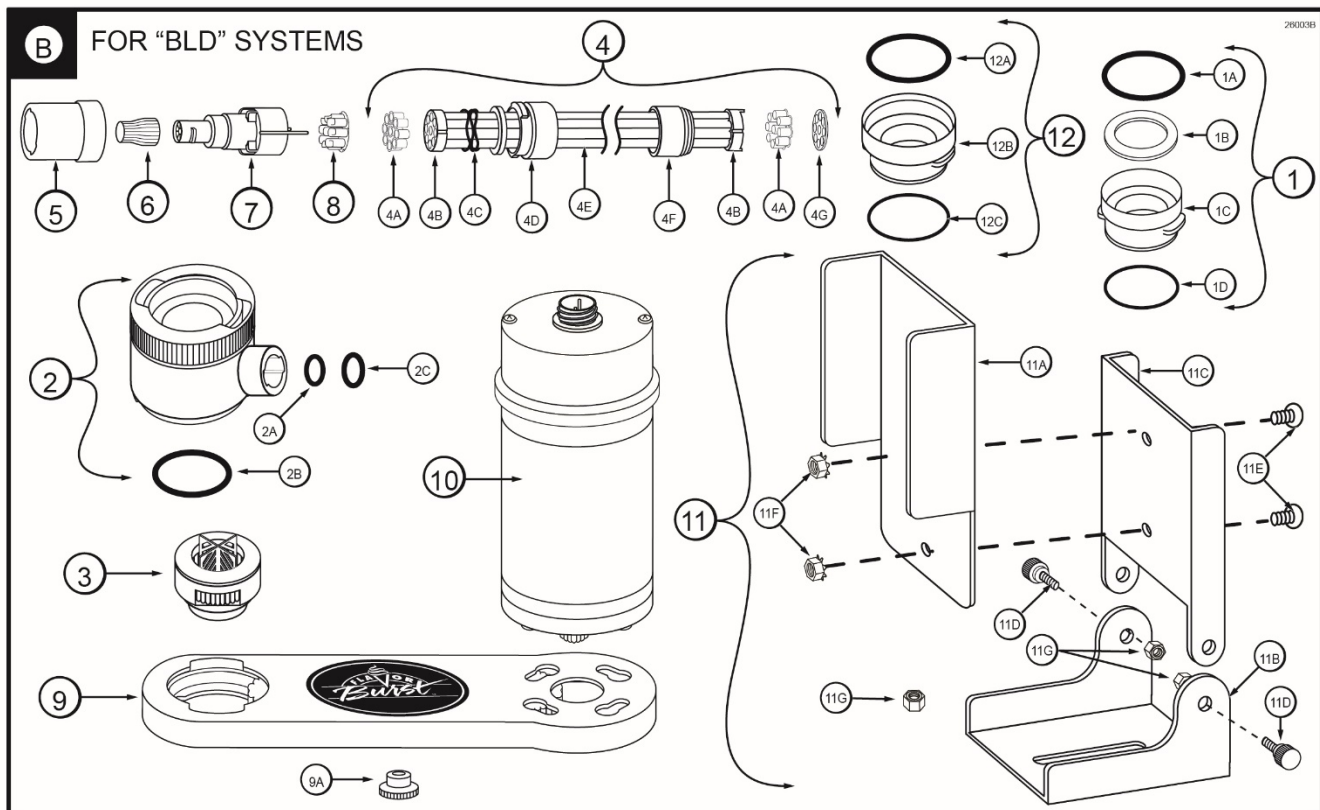


Figure 3B

**“BEV” Blending Assembly and Related Parts (See Figure 3C)**

| ITEM     | PART NO.    | DESCRIPTION   | QTY.      | FUNCTION  |
|----------|-------------|---|-----------|---|
| <b>C</b> | INJ 424VTS  | VERTICAL BLENDING ASSEMBLY WITH SYRUP LINES, ADAPTER, & BRACKET | 1*<br>0** | <b>FOR “BEV” SYSTEMS:</b> Blends syrups into the product.<br>*1 for 80BEV systems.<br>**0 for 80SS, 80BLD, 80FCB systems. |
| 1        | INJ 422VS   | BLENDING HEAD ASSEMBLY  | 1 ea.     | Connects flavor line to inject syrups into product.   |
| 1A       | RUB 652-RSS | SMALLER SYRUP PORT O-RING                                       | 1 ea.     | Provides sealed cavity inside syrup port.   |
| 1B       | RUB 651     | BLENDING HEAD O-RING 2-020                                      | 1 ea.     | Provides a sealed cavity.   |
| 1C       | RUB 660     | LARGER SYRUP PORT O-RING  | 1 ea.     | Provides sealed cavity inside syrup port.   |
| 2        | INJ 321S    | GEAR CARTRIDGE ASSEMBLY – VERTICAL BLENDER                      | 1         | Rotates product for even syrup distribution throughout slush product.   |
| 3        | SYR 932     | 6' 9-TUBE ASSEMBLY  | 1         | Supplies syrup to Blending Head from pumps.   |
| 3A       | FAS 2051    | ROLLED FLANGE EYELET  | 18 ea.    | Provides tension in syrup line to affix to line coupler.  |
| 3B       | ROT 510     | LINE COUPLER  | 2 ea.     | Holds flavor lines in place.  |
| 3C       | ROT 515-C   | 9-TUBE ASSEMBLY WAVE SPRING                                     | 1 ea.     | Provides tension between tube connectors.   |
| 3D       | INJ 116     | LINE COUPLER NUT - BLACK  | 1 ea.     | Attaches flavor tubes to flavor manifold.   |
| 3E       | SYR 901     | 6' 9-TUBE ASSEMBLY TUBES  | 9 ea.     | Brings syrup from pump to Blending Head.  |
| 3F       | ROT 511     | LINE COUPLER NUT  | 1 ea.     | Connects flavor lines to the internal 9-Tube Assembly.  |
| 3G       | RUB 602     | 9-POS TUBE CONN. GASKET   | 1 ea.     | Provides sealed cavity.   |
| 4        | INJ 117     | TUBE CONNECTOR BODY –BLACK                                      | 1         | Secures flavor line manifold to flavor lines.   |
| 5        | MIS 3142    | FLAVOR LINE DUST CAP – FB 80                                    | 1         | Covers syrup manifold when not connected.   |
| 6        | INJ 201A    | SYRUP MANIFOLD - BLACK  | 1         | Connects flavor line to Blending Head.  |
| 7        | RUB 601     | 9-POS DUCKBILL CHECK VALVE                                      | 1         | Provides sealed cavity and prevents syrup leakage.  |
| 8        | MIS 3143    | BLENDING SUSPENSION BRACKET ASSEMBLY                            | 1         | Secures Blending Assembly to the freezer door.  |
| 8A       | FAS 2107    | INJECTOR BRACKET KNOB   | 1 ea.     | Secures the two bracket pieces.   |
| 8B       | MIS 3143A   | BLENDING BRACKET PART A   | 1 ea.     | Attaches to freezer door bolts to hang Blending Assembly.   |
| 8C       | MIS 3143B   | BLENDING BRACKET PART B   | 1 ea.     | Secures Bracket Assembly to Blending Assembly.  |

**“BEV” Blending Assembly and Related Parts (Continued)**

| ITEM | PART NO.    | DESCRIPTION                     | QTY.  | FUNCTION   |
|------|-------------|---------------------------------|-------|--|
| 9    | INJ 323TS   | BLENDING ASSEMBLY - NO HEAD     | 1     | Powers Blending system.                                |
| 9A   | INJ 330TS   | BLENDING MOTOR ASSEMBLY         | 1 ea. | Powers Blending system.                                |
| 9B   | INJ 331     | BLENDING GEARBOX ASSEMBLY       | 1 ea. | Gears turn Gear Cartridge for even syrup distribution. |
| 9C   | FAS 2023    | ACCESSORY MOUNTING BRACKET KNOB | 1 ea. | Secures base Mounting Bracket to Gear Box.             |
| 10   | ADPT 104R-A | CROWN ADAPTER WITH O-RINGS      | 1     | Attaches Blending Assembly to freezer door.            |
| 10A  | RUB 627     | TAYLOR ADAPTER O-RING 8750      | 1 ea. | Creates tension to secure adapter to freezer door.     |
| 10B  | ADPT 104R   | CROWN ADAPTER WITOUT O-RINGS    | 1 ea. | Attaches Blending Assembly to freezer door.            |
| 10C  | RUB 632     | BLENDING ADAPTER O-RING         | 1 ea. | Creates tension to secure adapter to Blending Head.    |

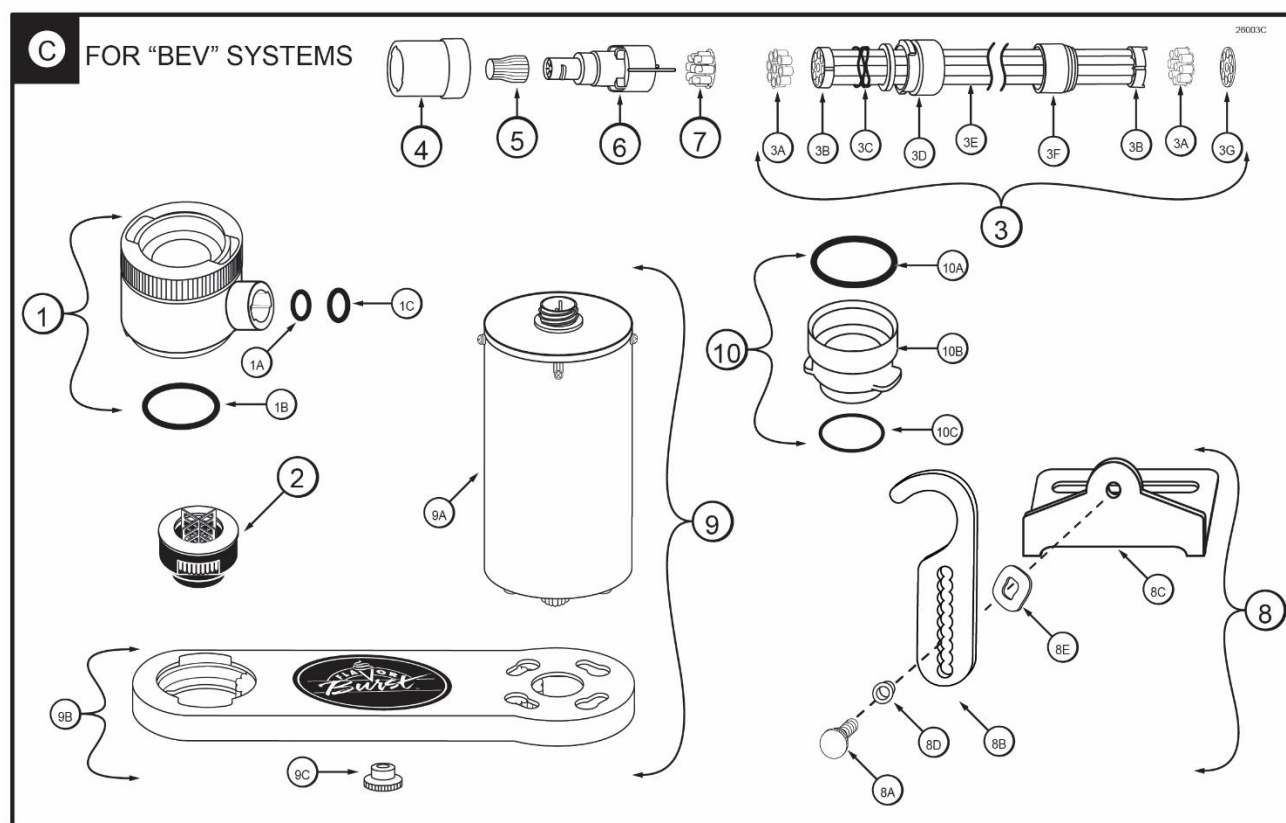


Figure 3C

**“FCB” Door Spout Assembly and Related Parts (See Figure 3D)**

| ITEM     | PART NO.       | DESCRIPTION                         | QTY.      | FUNCTION   |
|----------|----------------|-------------------------------------|-----------|--|
| <b>D</b> | ADPT TY80S-FCB | MODIFIED FCB FREEZER SPOUT ASSEMBLY | 1*<br>0** | <b>FOR “FBC” SYSTEMS:</b> Dispenses product blended with syrups.<br>*1 for 80FCB systems.<br>**0 for 80SS, 80BEV, 80BLD systems. |
| 1        | FCB 112        | MODIFIED DOOR SPOUT ASSEMBLY        | 1         | Dispenses product mixed with flavorings.   |
| 1A       | RUB 652-RSS    | SMALLER SYRUP PORT O-RING           | 1 ea.     | Provides a sealed cavity inside the syrup port.  |
| 1B       | RUB 660        | LARGER SYRUP PORT O-RING            | 1 ea.     | Provides a sealed cavity inside the syrup port.  |
| 2        | ELE 530        | SPIGOT SWITCH ASSEMBLY KIT          | 1         | Activates the syrup pumps.   |
| 2A       | FAS 2042       | 4/40 LOCK NUT                       | 1 ea.     | Secures the screw to the magnetic actuator.  |
| 2B       | MIS 3180       | MAGNETIC ACTUATOR                   | 1 ea.     | Activates the Spigot Switch.   |
| 2C       | FAS 2140       | 440 x 5/8 PHILLIPS P.H. SS SCREW    | 1 ea.     | Secures the magnetic actuator to the FCB door handle.  |
| 3        | FCB 121        | FLOW RATE CONTROLLER                | 1         | Regulates the rate at which product is dispensed.  |
| 3A       | FAS 2134       | 8-32 x 1 ½” M/SCREW P.H. SS         | 1 ea.     | Adjusts to shorten and lengthen the assembly to allow more or less product dispensed.  |
| 3B       | FCB 115        | 8-32 X 1” PLAS STAND OFF            | 1 ea.     | Connects the two screws of the assembly.   |
| 3C       | FAS 2024       | 8-32 X ¼” M/SCREW P.H. SS           | 1 ea.     | Remains as a stationary screw.   |
| 4        | SYR 932FCB     | 6’ 9-TUBE ASSEMBLY - FCB            | 1         | Supplies syrup to the draw spout from the pumps.   |
| 4A       | FAS 2051       | ROLLED FLANGE EYELET                | 18 ea.    | Provides tension in syrup line to affix to line coupler.   |
| 4B       | ROT 510        | LINE COUPLER                        | 2 ea.     | Holds flavor lines in place.   |
| 4C       | RUB 610        | BAG CONNECTOR O-RING                | 1 ea.     | Provides extra tension between tube connectors.  |
| 4D       | ROT 515-B      | 9-TUBE ASSEMBLY WAVE SPRING         | 1 ea.     | Provides tension between tube connectors.  |
| 4E       | INJ 116        | LINE COUPLER NUT – BLACK            | 1 ea.     | Connects flavor lines to the internal 9-Tube Assembly.   |
| 4F       | SYR 901        | 6’ 9-TUBE ASSEMBLY TUBES            | 9 ea.     | Brings syrup from pump to modified door spout.   |
| 4G       | ROT 511        | LINE COUPLER NUT                    | 1 ea.     | Connects the flavor lines to the internal 9-Tube Assembly.   |
| 4H       | RUB 602        | 9-POS TUBE CONNECTOR GASKET         | 1 ea.     | Provides a sealed cavity.  |
| 5        | INJ 117        | TUBE CONNECTOR BODY-BLACK           | 1         | Secures flavor line manifold to flavor lines.  |
| 6        | MIS 3142       | FLAVOR LINE DUST CAP- FB 80         | 1         | Covers syrup manifold when not connected.  |
| 7        | INJ 201A       | SYRUP MANIFOLD                      | 1         | Connects flavor line to modified door spout.   |
| 8        | RUB 601        | 9-POS DUCKBILLE CHECK VALVE         | 1         | Provides sealed cavity and prevents syrup leakage.   |

# **“FCB” Door Spout Assembly and Related Parts**

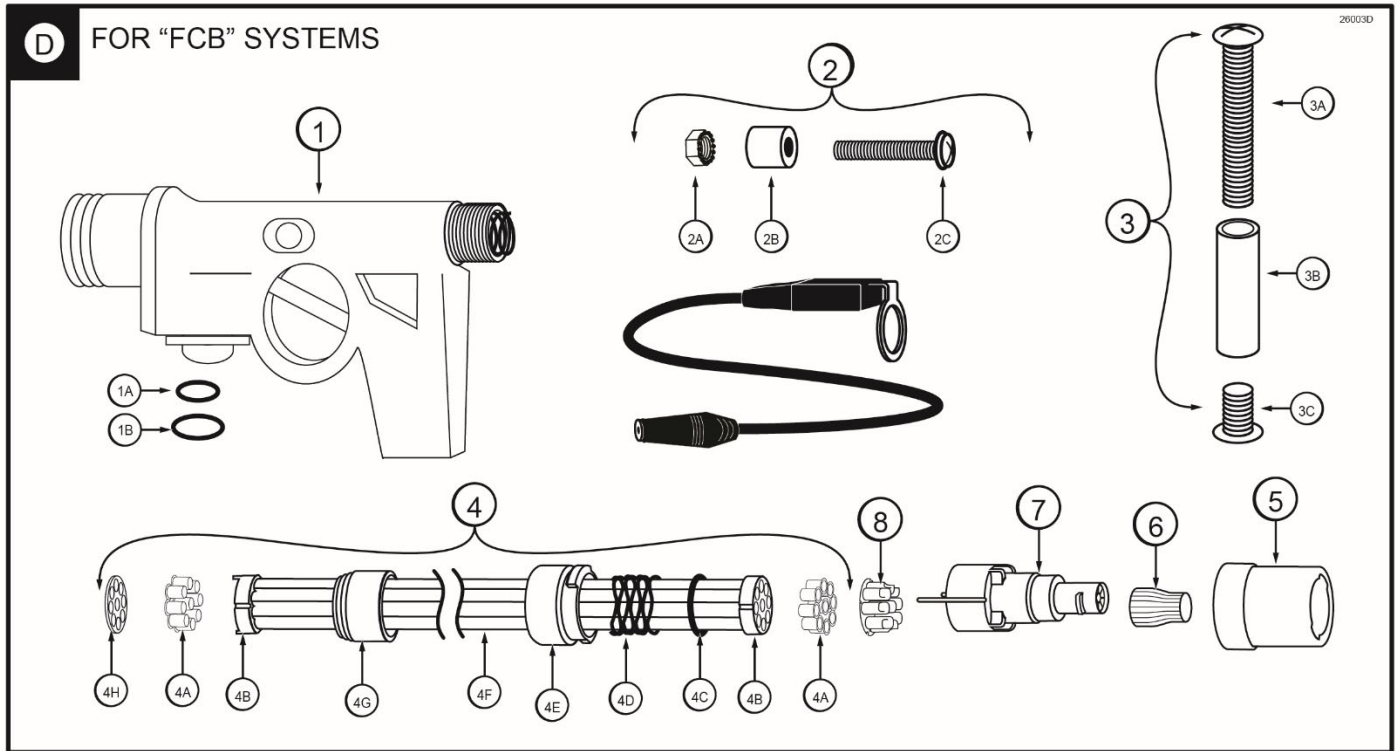


Figure 3D

### Soft Serve Syrup Pump and Related Parts (See Figure 4A)

| ITEM | PART NO. | DESCRIPTION                         | QTY.      | FUNCTION  |
|------|----------|-------------------------------------|-----------|---|
| A    | N/A      | SOFT SERVE SYRUP PUMP SYSTEM        | 4*<br>0** | FOR “SS”, “BLD” SYSTEMS: Pumps syrup from bags into flavor lines.<br>*4 for 80SS, 80BLD systems.<br>**0 for 80BEV, 80FCB systems. |
| 1    | N/A      | SOFT SERVE SYRUP PUMP               | 1 ea.     | Pumps syrup from bags to flavor lines.  |
| 1A   | SYR 307  | PERISTALTIC SYRUP PUMP – SOFT SERVE | 1 ea.     | Pumps syrup from bags to flavor lines.  |
| 1B   | TUB 806  | 1/8” SYRUP PUMP REPL TUBE           | 1 ea.     | Transports syrup through pump.  |
| 1C   | FAS 2067 | SYRUP PUMP TUBE WASHER-1/4          | 1 ea.     | Secures pump tube.  |
| 1D   | FAS 2066 | SYRUP PUMP CLAMP-HOSE-1/4"          | 1 ea.     | Prevents pump tube from slipping.   |
| 1E   | FAS 2051 | ROLLED FLANGE EYELET                | 1 ea.     | Creates tension for tighter fit.  |
| 1F   | FIX 1036 | 1/4" TO 1/4" OD UNION ELBOW         | 1 ea.     | Connects syrup in tube to pump.   |
| 1G   | FIX 1035 | 1/4 TO 3/16 OD REDUCING UNION       | 1 ea.     | Connects syrup pump to flavor line out.   |
| 2    | SYR 945  | SYRUP TUBE ASSEMBLY – SOFT SERVE    | 1 ea.     | Transports flavor from bag to pump.   |
| 2A   | FIX 1054 | 1/4” ID HOSE BARB SHUTOFF           | 1 ea.     | Connects flavor line to flavor bag.   |
| 2B   | SYR 902  | FLAVOR-IN TUBE                      | 1 ea.     | Carries syrup from syrup bag to pump.   |
| 2C   | TUB 811  | TUBE-SILICONE .188X.375 PE FB80     | 1 ea.     | Connects barb fitment to tube port.   |
| 2D   | FIX 1048 | FITTING-1/4X1/4 BARB FB80           | 1 ea.     | Connects syrup tube to silicone tube.   |
| 3    | ELE 932  | PUMP & SANITIZER CABLE HARNESS      | 1         | Provides power to the syrup and sanitizer pumps.  |

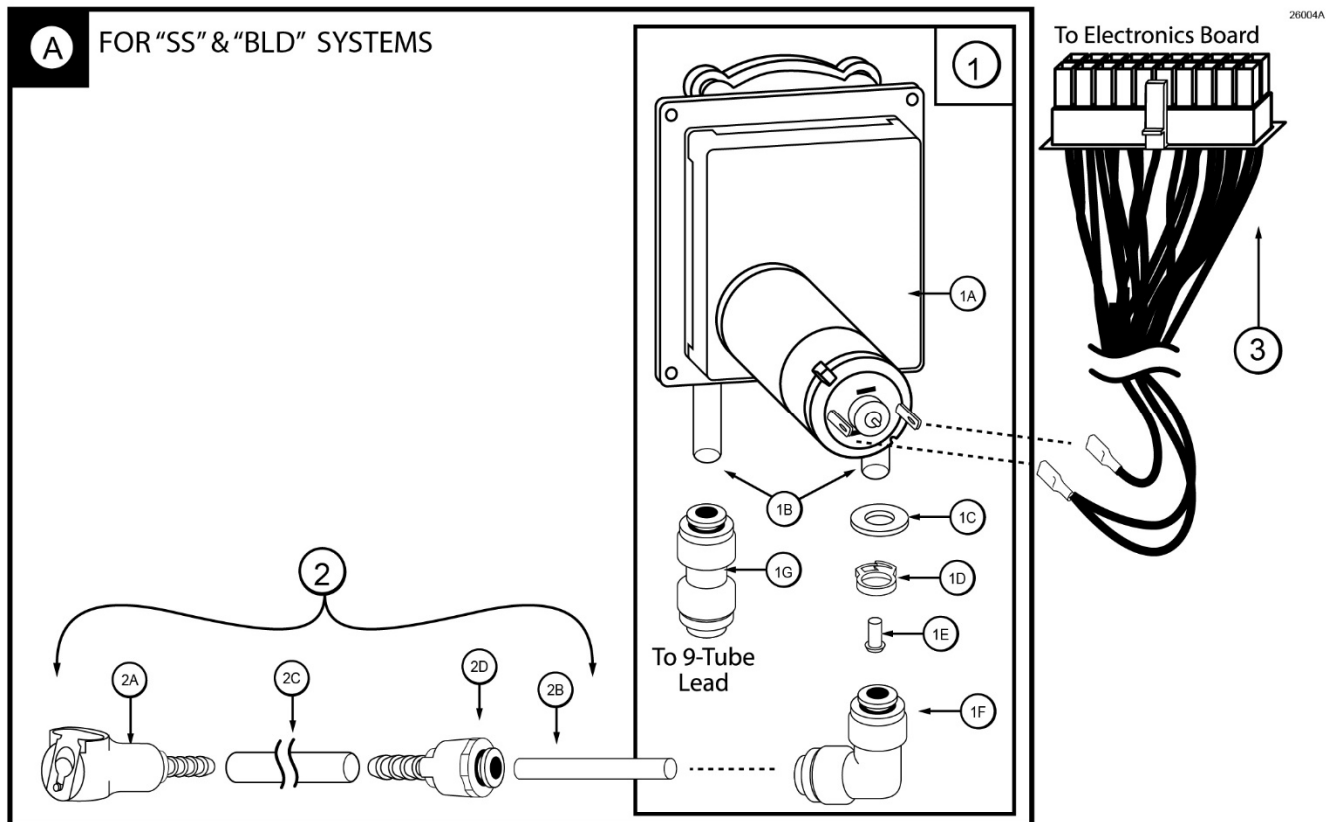


Figure 4A



### Beverage Syrup Pump and Related Parts (See Figure 4B)

| ITEM     | PART NO.  | DESCRIPTION                             | QTY.      | FUNCTION  |
|----------|-----------|---|-----------|---|
| <b>B</b> | N/A       | BEVERAGE SYRUP PUMP SYSTEM              | 4*<br>0** | <b>FOR “BEV” &amp; “FCB” SYSTEMS:</b> Pumps syrup from flavor bags to flavor lines.<br>*4 for 80BEV and 80FCB systems.<br>**0 for 80SS, 80BLD systems |
| 1        | N/A       | BEVERAGE SYRUP PUMP                     | 1 ea.     | Pumps syrup from bags to flavor lines.  |
| 1A       | SYR 926   | PERISTALTIC SYRUP PUMP - BEVERAGE       | 1 ea.     | Pumps syrup from bags into flavor lines.  |
| 1B       | TUB 809   | 1/4" SYRUP SHAKE PUMP REPLACEMENT TUBE  | 1 ea.     | Transports syrup through pump.  |
| 1C       | FIX 1045  | 1/4" TUBE TO 1/4" HOSE STEM             | 1 ea.     | Creates tension for tighter fit, connects pump to fitment.  |
| 1D       | FIX 1035  | 1/4 TO 3/16 OD REDUCING UNION           | 1 ea.     | Connects syrup pump to flavor line out.   |
| 1E       | FIX 1036  | 1/4" TO 1/4" OD UNION ELBOW             | 1 ea.     | Connects bag connector assembly to flavor line/pump.  |
| 2        | SYR 945SH | SYRUP TUBE ASSEMBLY – SHAKE BAG COUPLER | 1 ea.     | Transports the flavoring from the syrup bag to the syrup pump.  |
| 2A       | SYR 928   | #27-1102-99 .265" BAG COUPLER           | 1 ea.     | Fastens bag fitment to bag connector.   |
| 2B       | TUB 811   | TUBE-SILICONE .188X.375 PE FB80         | 1 ea.     | Provides sealed cavity inside bag fitment.  |
| 2C       | FIX 1048  | FITTING ¼ X ¼ BARB FB80                 | 1 ea.     | Connects bag coupler assembly to flavor line/pump.  |
| 2D       | SYR 902   | FLAVOR-IN TUBE                          | 1 ea.     | Carries syrup from syrup bag to pump.   |
| 3        | ELE 932   | PUMP & SANITIZER CABLE HARNESS          | 1         | Provides power to the syrup and sanitizer pumps.  |

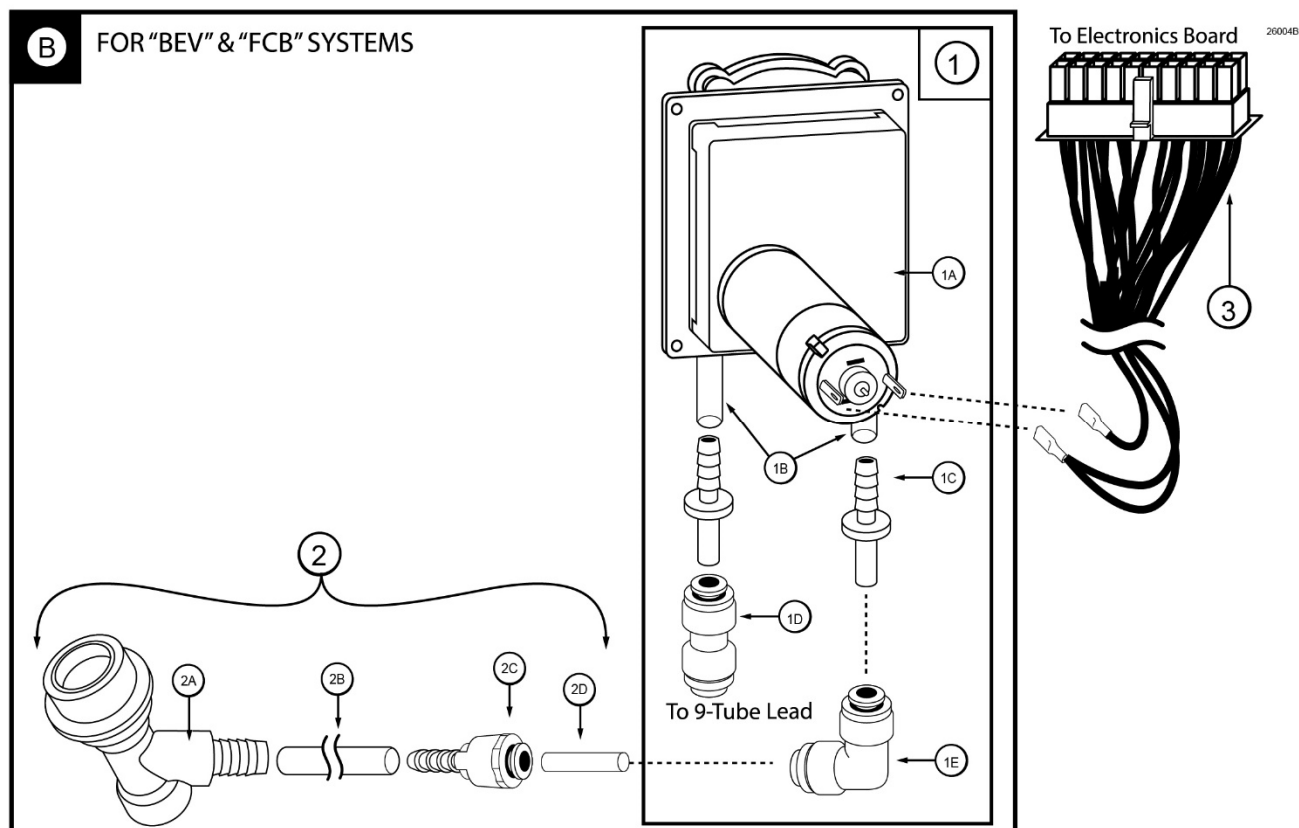


Figure 4B

### Sanitizer Pump and Related Parts (See Figure 5)

| ITEM  | PART NO.    | DESCRIPTION                                     | QTY.      | FUNCTION  |
|-------|-------------|---|-----------|---|
| 1-1   | MIS 3028-80 | SANITIZER FLUSH TUBE ASSEMBLY – SOFT SERVE      | 1*<br>0** | <b>FOR “SS” &amp; “BLD” SYSTEMS:</b> Flushes flavor lines with sanitizer when attached.<br>*1 for 80SS, 80BLD systems.<br>**0 for 80BEV, 80FCB systems.           |
| 1A    | FIX 1051    | SANITIZER TANK FITMENT                          | 1 ea.     | Connects flavor line to sanitizer pump and tank.  |
| 1B    | SYR 931     | CLEAR TUBING                                    | 1 ea.     | Transports sanitizer to sanitizer / flush tubes.  |
| OR... |             |   |           |   |
| 1-2   | MIS 3028-S  | SANITIZER FLUSH TUBE ASSEMBLY – FROZEN BEVERAGE | 1*<br>0** | <b>FOR “BEV” &amp; “FCB” SYSTEMS:</b> Flushes flavor lines with sanitizer when attached.<br>*1 for 80BEV, 80FCB systems.<br>**0 for 80SS, 80BLD systems.          |
| 2     | TUB 807     | SANITIZER TUBE REPLACEMENT                      | 1         | Transports sanitizer through pump.  |
| 3     | SAN 748     | SANITIZER PUMP ASSEMBLY                         | 1         | Supplies sanitizer to flush tube.   |
| 4     | ELE 932     | PUMP & SANITIZER CABLE HARNESS                  | 1         | Provides power to the pumps.  |
| 5     | FIX 1035    | 1/4 TO 3/16 OD REDUCING UNION                   | 1         | Connects elbow to sanitizer line.   |
| 6     | FIX 1042    | TUBE-TO-TUBE ELBOW                              | 4*<br>2** | Connects pump tube to reducing union.<br>*4 for 80SS, 80BLD, 80BEV systems.<br>**2 for 80FCB systems.   |
| 7     | FIX 1053    | SANITIZER PUMP T CONNECTOR                      | 1*<br>0** | <b>FOR “SS”, “BLD”, “BEV” SYSTEMS:</b> Connects sanitizer line to flush adapter and pump lines.<br>*1 for 80SS, 80BLD, 80BEV systems.<br>**0 for 80FCB systems.   |
| 8     | FIX 1023    | 3/16" X 3/16" BARB TUBE CONNECT                 | 1         | Splices together flush tubes.   |
| 9     | SYR 931     | CLEAR TUBING                                    | 2         | Transports sanitizer from the pump to the flush line.   |
| 10    | TUB 803     | .17 x 1/4 LDPE TUBING-PER FOOT                  | 1*<br>0** | <b>FOR “SS”, “BLD”, “BEV” SYSTEMS:</b> Transports sanitizer solution from tank to sanitizer pump.<br>*1 for 80SS, 80BLD, 80BEV systems.<br>**0 for 80FCB systems. |
| 11    | FIX 1033    | 1/4" X 1/4" BLKHD (PUSH-TO-CONNECT)             | 1         | Connects Sanitizer Tank tube to the unit.   |
| 12    | FIX 1051    | SANITIZER TANK FITMENT                          | 1         | Connects cabinet sanitizer line to sanitizer tank.  |
| 13    | FIX 1045    | 1/4" TUBE TO 1/4" HOSE STEM                     | 1*<br>0** | <b>FOR “FCB” SYSTEMS:</b> Connects the Pump Flush Adapter tubing to the cabinet base fitment.<br>*1 for 80FCB systems.<br>**0 for 80SS, 80BLD, 80BEV systems.     |

Sanitizer Pump and Related Parts

20005

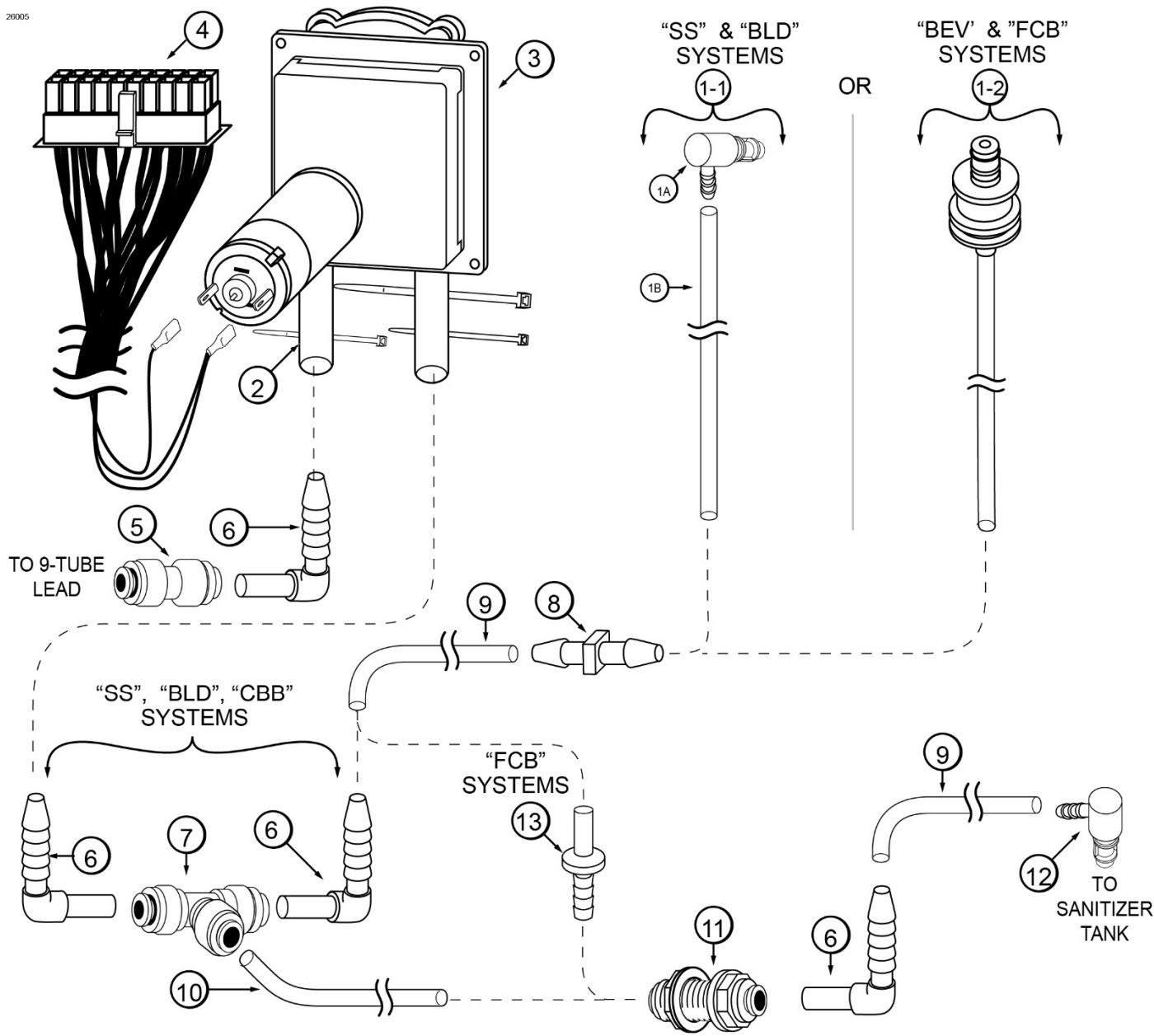


Figure 5

### Syrup Tray, Sanitizer Tank, 9-Tube Assembly Lead, and Casing (See Figure 6)

| ITEM | PART NO.  | DESCRIPTION                            | QTY.  | FUNCTION  |
|------|-----------|--|-------|---|
| 1    | SYR 927-4 | INTERNAL 5-TUBE ASSEMBLY - JUNIOR      | 1     | Transports syrup from bags to flavor 9-Tube Assembly.                       |
| 1A   | SYR 900   | 4' 9-TUBE ASSEMBLY TUBES               | 5 ea. | Transports syrup and sanitizer from pumps to Injector Assembly.             |
| 1B   | ROT 511   | LINE COUPLER NUT                       | 1 ea. | Connects flavor lines to the internal 9-Tube Assembly.                      |
| 1C   | ROT 512   | TUBE CONNECTOR BODY                    | 1 ea. | Connects internal 9-Tube Assembly to flavor lines.                          |
| 1D   | ROT 510   | LINE COUPLER                           | 1 ea. | Holds flavor lines in place.  |
| 1E   | FAS 2051  | ROLLED FLANGE EYELET                   | 5 ea. | Creates tension for tighter fit 1 per pump, 9 per tube assembly.            |
| 1F   | MIS 3023  | DUST CAP                               | 1 ea. | Cover to protect end of flavor lines.                                       |
| 2    | CAB 113   | FLAVORING TRAY                         | 4     | Houses syrup bags.  |
| 3    | SAN 756   | SANITIZER TANK ASSEMBLY                | 1     | Houses sanitizer cleaning solution.   |
| 3A   | SAN 749   | THREADED CHECK VALVE                   | 1 ea. | Allows air to fill Sanitizer Tank.  |
| 3B   | SAN 750   | SANITIZER TANK DOME NUTS               | 1 ea. | Mounts check valve to Sanitizer Tank.                                       |
| 3C   | FIX 1052  | SANITIZER TANK QUICK CONNECT           | 1 ea. | Connects sanitizer lines to Sanitizer Tank.                                 |
| 3D   | SAN 755   | SANITIZER TANK CAP                     | 1 ea. | Allows Sanitizer Tank to be refilled.                                       |
| 3E   | SAN 754   | SANITIZER CAP O-RING                   | 1 ea. | Seals the Sanitizer Tank opening to prevent leakage.                        |
| 3F   | SYR 931   | CLEAR TUBING                           | 1 ea. | Transports sanitizer to flush tubes.  |
| 3G   | SAN 751   | SANITIZER TANK                         | 1 ea. | Houses sanitizer cleaning solution.   |
| 3H   | RUB 604   | SANITIZER TANK O-RING                  | 4 ea. | Seals sanitizer tank's quick connect & check valve openings.                |
| 4    | MIS 3196  | STAINLESS 9-TUBE CASING ASSEMBLY       | 1     | Protects and holds the cables and tubes in place on the freezer side panel. |
| 4A   | N/A       | STAINLESS 9-TUBE CASING HINGED CHANNEL | 1 ea. | Covers and protects the cables and tubes of the Casing Assembly.            |
| 4B   | MIS 3051  | CH-6 CHANNEL MAGNET ASSEMBLY           | 2 ea. | Holds the Casing Channel to freezer panel.                                  |
| 4C   | FAS 2040  | 6-32 x 1/4 PAN HEAD SCREW              | 1 ea. | Secures cover to mounting brackets.   |
| 4D   | FAS 2024  | 8-32 x 1/4 PAN HEAD SCREW              | 4 ea. | Secures magnet assembly to brackets.  |
| 4E   | FAS 2035  | 8-32 NUTS – EXT. LOCK WASHER           | 4 ea. | Secures magnet assembly to brackets.  |

# Syrup Tray, Sanitizer Tank, 9-Tube Assembly Lead, and Casing

26008

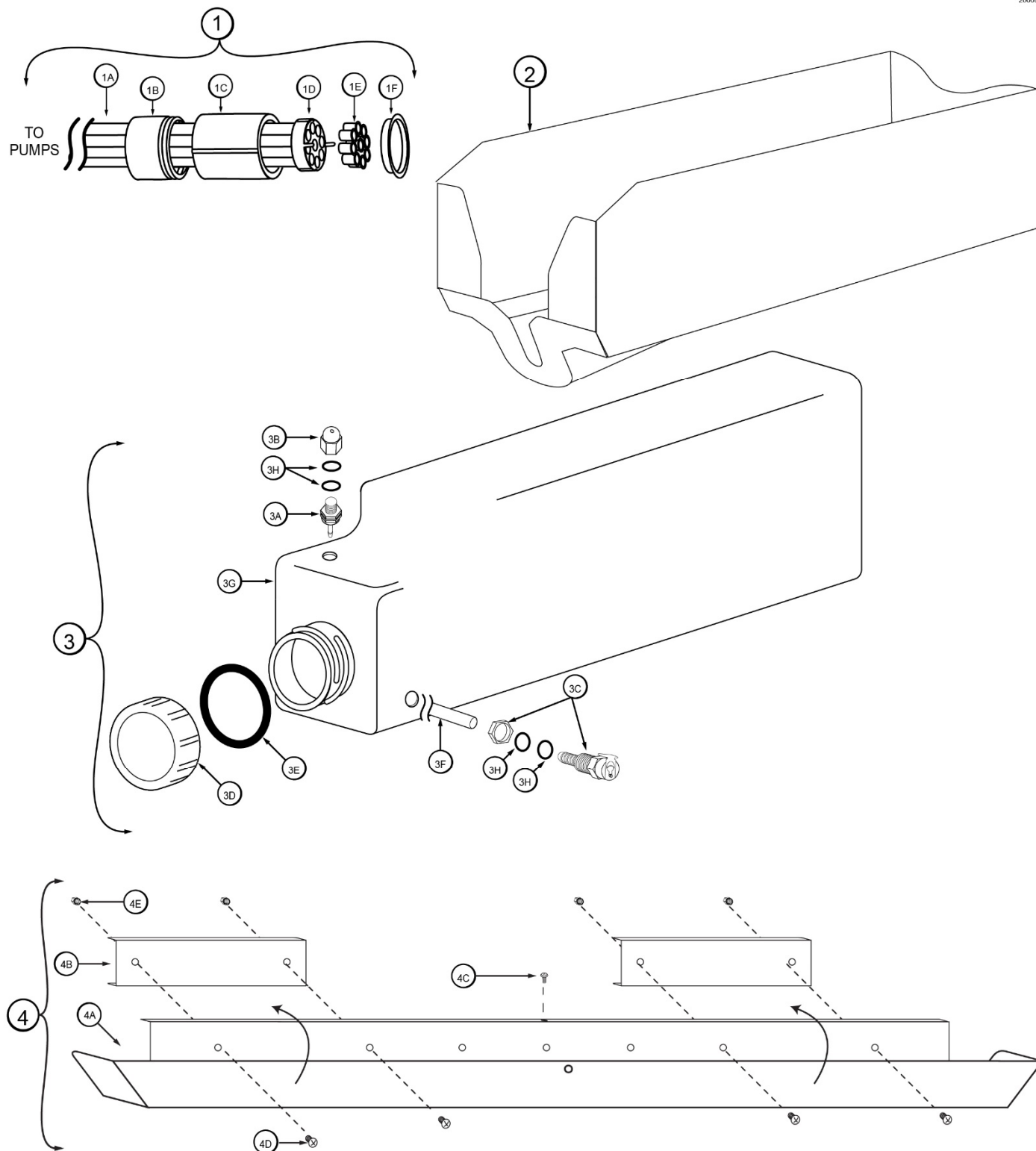


Figure 6

## Electronic Parts and Connections (See Figure 7)

| ITEM | PART NO.    | DESCRIPTION                                | QTY.      | FUNCTION  |
|------|-------------|--|-----------|---|
| 1    | ELE 906     | FLAVOR 10 COLOR TOUCH PANEL                | 1         | Control system for the unit.  |
| 2    | MIS 3214    | TOUCH PANEL MOUNTING BRACKET ASSEMBLY      | 1*<br>0** | <b>FOR "SS" &amp; "BLD" SYSTEMS:</b> Secures the Touch Panel to the freezer.<br>*1 for 80SS & 80BLD systems.<br>**0 for 80BEV & 80FCB systems.  |
| 2A   | MIS 3214A   | TOUCH PANEL MOUNTING PLATE                 | 1 ea.     | Attaches the Touch Panel to the anchor bracket.   |
| 2B   | MIS 3214B   | MOUNTING ANCHOR BRACKET                    | 1 ea.     | Allows the bracket to be angled up or down.   |
| 2C   | MIS 3214C   | MOUNTING BASE PLATE                        | 1 ea.     | Creates a mounting base for bracket assembly.   |
| 2D   | FAS 2170    | M4 X 8 PHILLIPS SCREW                      | 4 ea.     | Secures the mounting plate to the Touch Panel.  |
| 2E   | FAS 2174    | 1/4 - 20 NYLON LOCK NUT S.S.               | 2 ea.     | Secures the anchor bracket in a fixed position.   |
| 2F   | MIS 3076    | ADHESIVE PAD                               | 1 ea.     | Secures the mounting bracket to the freezer.  |
| 2G   | FAS 2172    | 1/4-20 X 1/2 HEX BOLT                      | 2 ea.     | Hinges Touch Panel plate and anchor bracket.  |
| 2H   | FAS 2023    | MOUNTING BRACKET KNOB                      | 4 ea.     | Secures the anchor bracket to the base plate.   |
| 2I   | FAS 2171    | M4 LOCK WASHER                             | 4 ea.     | Secures connection between screw and plate.   |
| 2J   | FAS 2173    | FLAT WASHER 18-8 S.S.                      | 2 ea.     | Secures the connection between bolt and nut.  |
| 3    | MIS 3220    | TOUCH PANEL SIDE MOUNTING BRACKET ASSEMBLY | 1*<br>0** | <b>FOR "BEV" &amp; "FCB" SYSTEMS:</b> Secures the Touch Panel to the freezer.<br>*1 for 80BEV & 80FCB systems.<br>**0 for 80SS & 80BLD systems. |
| 3A   | MIS 3220A   | TOUCH PANEL MOUNTING PLATE                 | 1 ea.     | Attaches the Touch Panel to the anchor bracket.   |
| 3B   | MIS 3220B   | MOUNTING ANCHOR BRACKET                    | 1 ea.     | Allows the bracket to be angled up or down.   |
| 3C   | MIS 3220C   | MOUNTING BASE PLATE                        | 1 ea.     | Creates a mounting base for bracket assembly.   |
| 3D   | FAS 2170    | M4 X 8 PHILLIPS SCREW                      | 4 ea.     | Secures the mounting plate to the Touch Panel.  |
| 3E   | FAS 2022    | 1/2" SELF-DRILL SCREW                      | 4 ea.     | Secures the anchor bracket in a fixed position.   |
| 3F   | FAS 2177    | 10-32 LOCK NUT                             | 5 ea.     | Secures the mounting bracket to the freezer.  |
| 3G   | FAS 2171    | M4 LOCK WASHER                             | 4 ea.     | Hinges Touch Panel plate and anchor bracket.  |
| 3H   | FAS 2178    | WASHER #10                                 | 2 ea.     | Secures the anchor bracket to the base plate.   |
| 3I   | FAS 2058    | LOCK WASHER                                | 2 ea.     | Secures connection between screw and plate.   |
| 4    | ELE 525M    | MALE TO MALE 48" SWITCH EXTENSION          | 1         | Connects Touch Panel to the freezer switch.   |
| 5    | CAB 138TS-B | ELECTRONICS BASE PANEL – LOW PROFILE       | 1         | Secures microprocessor.   |
| 6    | CAB 137-B   | ELECTRONICS COVER – LOW PROFILE            | 1         | Protects and covers the electronics microprocessor.   |
| 7    | FAS 2014    | 8-32 X 1/2" PAN HEAD                       | 10        | Secures various parts within the top of the unit.   |
| 8    | MIS 3150    | FLAVOR BURST LOGO DECALS                   | 1         | Displays Flavor Burst trademark logo.   |
| 9    | MIS 3026S   | TOUCH PANEL CABLE CASING                   | 1         | Conceals and protects the Touch Panel cable, as well as attaches it to the freezer.   |
| 10   | ELE 485CTP  | 120V POWER ENTRANCE MODULE                 | 1         | Provides a power connection to the outside of the cabinet.  |
| 10A  | N/A         | GROUNDING WIRE                             | 1 ea.     | Grounds electricity.  |

## Electronic Parts and Connections (Continued)

| ITEM | PART NO.   | DESCRIPTION                        | QTY.      | FUNCTION   |
|------|------------|------------------------------------|-----------|--|
| 11   | ELE 932    | PUMP & SANITIZER CABLE HARNESS     | 1         | Provides power to the syrup and sanitizer pumps.   |
| 12   | ELE 933    | POWER SUPPLY JUMPER CABLE          | 1         | Connects the power supply to the electronics board.  |
| 13   | ELE 931    | EXTERNAL ROTOR CABLE               | 1*<br>0** | <b>FOR “SS”, “BLD” &amp; “BEV” SYSTEMS:</b> Connects the external rotor cable to the electronics board.<br>*1 for 80SS, 80BEV, & 80BLD systems.<br>**0 for 80FCB systems |
| 14-1 | INJ 330TS  | INJECTOR MOTOR ASSEMBLY            | 1*<br>0** | <b>FOR “SS” &amp; “BEV” SYSTEMS:</b> Turns assembly gears to spin product in the Injector Head.<br>*1 for 80SS & 80BEV systems.<br>**0 for 80FCB & 80BLD systems.        |
|      | OR...      |                                    |           |  |
| 14-2 | INJ 330HSB | HIGH SPEED BLENDING MOTOR ASSEMBLY | 1*<br>0** | <b>FOR “BLD” SYSTEMS:</b> Turns assembly gears to spin product in the Injector Head.<br>*1 for 80BLD, 80BEV systems.<br>**0 for 80FCB, 80BEV, 80SS, systems.             |
|      | OR...      |                                    |           |  |
| 14-3 | ELE 530    | FCB SPIGOT SWITCH ASSEMBLY KIT     | 1*<br>0** | <b>FOR “FCB” SYSTEMS:</b> Activates the syrup pumps when draw handle is activated.<br>*1 for 80FCB systems.<br>**0 for 80SS, 80BLD, 80BEV systems.                       |
| 15   | ELE 911    | ELECTRONICS BOARD                  | 1         | Provides power to the system.  |
| 16   | FAS 2024   | 8-32 X 1/4 PAN HEAD SCREW          | 4         | Secures electronics board to the base panel.   |
| 17   | FAS 2035   | 8-32 NUTS - EXT. LOCK WASHER       | 5         | Secures electronics board to base panel.   |
| 18   | FAS 2042   | 4/40 LOCK NUT                      | 4         | Secures the Ethernet plate and screws.   |
| 19   | ELE 930    | INTERNAL ROTOR CABLE               | 1*<br>0** | <b>FOR “SS”, “BLD” &amp; “BEV” SYSTEMS:</b> Connects the external rotor cable to the electronics board.<br>*1 for 80SS, 80BEV, & 80BLD systems.<br>**0 for 80FCB systems |
| 20   | FAS 2008   | 4-40 X 3/8" PAN HEAD SCREW         | 4         | Attaches the ethernet plate to the panel.  |
| 21   | MIS 3166   | CLOSURE PLUG 3/4 INCH              | 1*<br>2** | Closes up extra opening in the base panel.<br>*1 for 80SS, 80BEV, & 80BLD systems.<br>**2 for 80FCB systems  |
| 22   | ELE 434    | POWER CABLE                        | 1         | Supplies the electronics board with power.   |
| 23   | ELE 927    | RJ45 ETHERNET CABLE GLAND          | 1         | Secures the Ethernet cable to the cabinet.   |
| 24   | ELE 925    | RJ45 ETHERNET CABLE - EXTERNAL     | 1         | Connects the Touch Panel to the cabinet.   |
| 25   | ELE 926    | RJ45 ETHERNET CABLE - INTERNAL     | 1         | Connects the Ethernet cable to electronics board.  |
| 26   | MIS 3004   | CTP ETHERNET CABLE PLATE           | 1         | Converts the touchscreen cable hole to an ethernet cable hole.   |

**PAGE INTENTIONALLY LEFT BLANK**



# Electronic Parts and Connections

26006

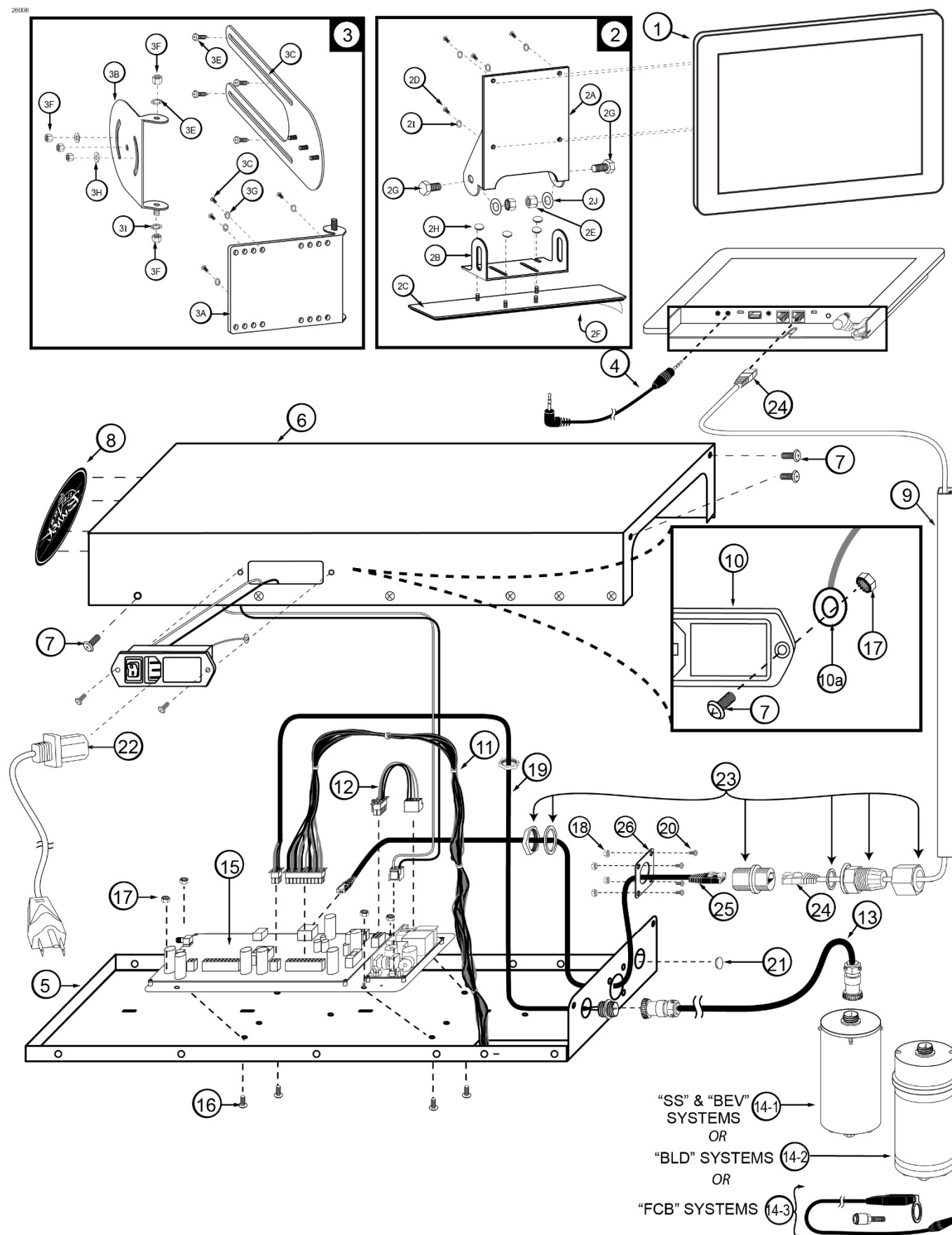


Figure 7

**“SS” Spare Parts Kit (See Figure 8A)**

| ITEM     | PART NO.     | DESCRIPTION  | QTY. | FUNCTION  |
|----------|--------------|--|------|---|
| <b>A</b> | SPR 5800A    | SPARE PARTS KIT – SOFT SERVE                         | 1    | <b>FOR “SS” SYSTEMS:</b> Houses extra spare parts and wear items. |
| 1        | INJ 321      | GEAR CARTRIDGE                                       | 1    | Rotates product for even syrup distribution.                      |
| 2        | ELE 430-RE-1 | SPIGOT SWITCH  | 1    | Activates Blending Assembly.                                      |
| 3        | RUB 601      | 9-POS DUCKBILL CHECK VALVE                           | 1    | Provides sealed cavity and prevents leakage.                      |
| 4        | RUB 602      | 9-POS TUBE CONN. GASKET                              | 1    | Provides sealed cavity.   |
| 5        | RUB 642      | UPPER ADAPTER O-RING FOR ADPT 101A ADAPTER           | 1    | Creates tension to secure adapter to freezer door.                |
| 6        | RUB 640      | FLAT ADAPTER GASKET FOR ADPT 101A ADAPTER            | 1    | Provides sealed cavity inside adapter.                            |
| 7        | RUB 632      | LOWER ADAPTER O-RING                                 | 1    | Helps secure the adapter to Injector Head.                        |
| 8        | RUB 652-RSS  | SMALLER SYRUP PORT O-RING                            | 1    | Provides sealed cavity inside syrup port.                         |
| 9        | RUB 660      | LARGER SYRUP PORT O-RING                             | 1    | Provides sealed cavity inside syrup port.                         |
| 10       | RUB 651      | BLENDING HEAD O-RING 2-020                           | 1    | Provides a sealed cavity.   |
| 11       | INJ 201A     | SYRUP MANIFOLD - BLACK                               | 1    | Connects flavor line to Injector Head.                            |
| 12       | INJ 117      | TUBE CONNECTOR BODY -BLACK                           | 1    | Secures syrup line manifold to flavor lines.                      |
| 13       | RUB 608      | ALTERNATE UPPER ADAPTER O-RING FOR ADPT 101A ADAPTER | 1    | Creates tension to secure adapter to freezer door.                |
| 14       | ELE 444      | 1 AMP, 1 1/4" SLOW BLOW FUSE                         | 2    | System overload protection.                                       |
| 15       | CW 137       | DRIVE MOTOR GEAR                                     | 1    | Turns Gear Box gears, powered by Drive Motor.                     |
| 16       | RUB 659      | UPPER ADAPTER O-RING FOR ADPT 8750-A ADAPTER         | 1    | Creates tension to secure adapter to freezer door.                |

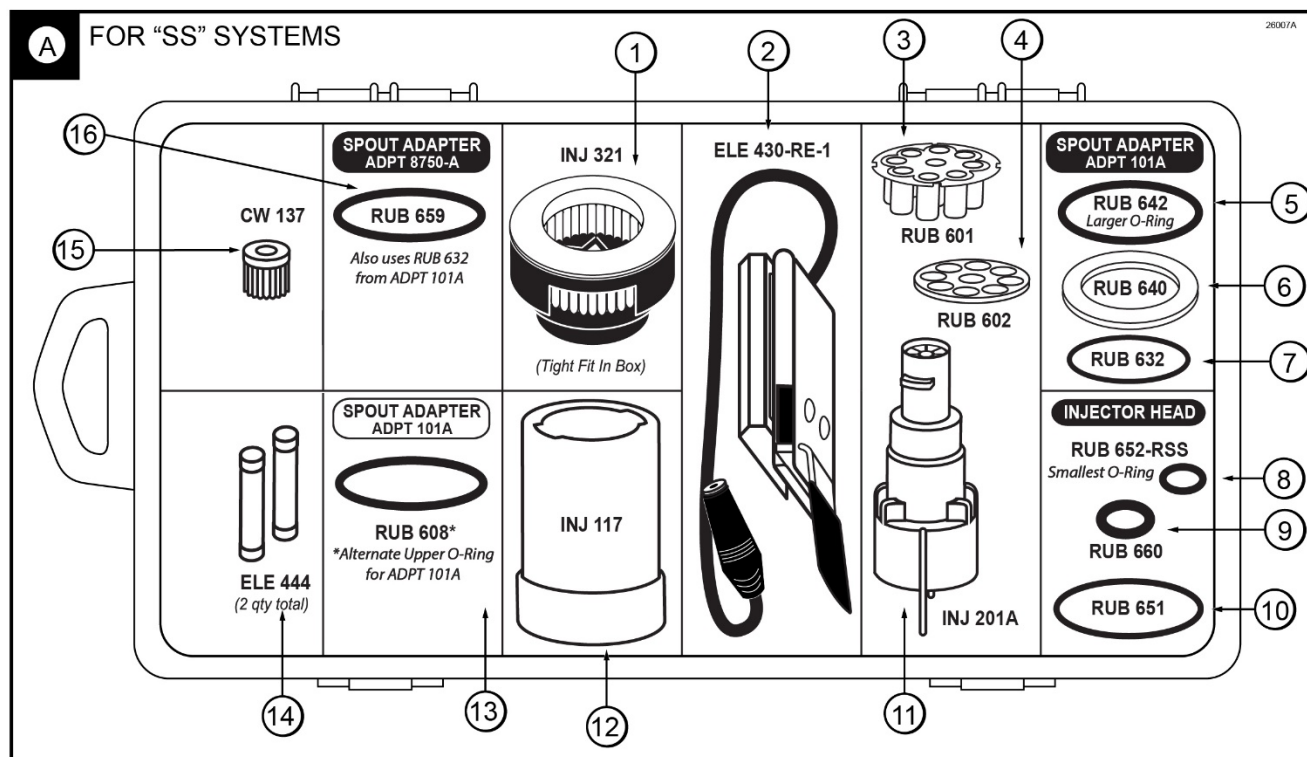


Figure 8A

**“BLD” Spare Parts Kit (See Figure 8B)**

| ITEM     | PART NO.     | DESCRIPTION  | QTY. | FUNCTION   |
|----------|--------------|--|------|--|
| <b>B</b> | SPR 5800BLD  | SPARE PARTS KIT – SOFT SERVE BLEND                   | 1    | <b>FOR “BLD” SYSTEMS:</b> Houses extra spare parts and wear items. |
| 1        | INJ 321C     | GEAR CARTRIDGE                                       | 1    | Rotates product for even syrup distribution.                       |
| 2        | ELE 430-RE-1 | SPIGOT SWITCH  | 1    | Activates Blending Assembly.                                       |
| 3        | RUB 601      | 9-POS DUCKBILL CHECK VALVE                           | 1    | Provides sealed cavity and prevents leakage.                       |
| 4        | RUB 602      | 9-POS TUBE CONN. GASKET                              | 1    | Provides sealed cavity.  |
| 5        | RUB 642      | UPPER ADAPTER O-RING FOR ADPT 101A ADAPTER           | 1    | Creates tension to secure adapter to freezer door.                 |
| 6        | RUB 640      | FLAT ADAPTER GASKET FOR ADPT 101A ADAPTER            | 1    | Provides sealed cavity inside adapter.                             |
| 7        | RUB 632      | LOWER ADAPTER O-RING                                 | 1    | Helps secure the adapter to Blending Head.                         |
| 8        | RUB 652-RSS  | SMALLER SYRUP PORT O-RING                            | 1    | Provides sealed cavity inside syrup port.                          |
| 9        | RUB 660      | LARGER SYRUP PORT O-RING                             | 1    | Provides sealed cavity inside syrup port.                          |
| 10       | RUB 651      | BLENDING HEAD O-RING 2-020                           | 1    | Provides a sealed cavity.  |
| 11       | INJ 201A     | SYRUP MANIFOLD - BLACK                               | 1    | Connects flavor line to Blending Head.                             |
| 12       | INJ 117      | TUBE CONNECTOR BODY -BLACK                           | 1    | Secures syrup line manifold to flavor lines.                       |
| 13       | RUB 608      | ALTERNATE UPPER ADAPTER O-RING FOR ADPT 101A ADAPTER | 1    | Creates tension to secure adapter to freezer door.                 |
| 14       | ELE 444      | 1 AMP, 1 1/4" SLOW BLOW FUSE                         | 2    | System overload protection.  |
| 15       | CW 137       | DRIVE MOTOR GEAR                                     | 1    | Turns Gear Box gears, powered by Drive Motor.                      |
| 16       | RUB 659      | UPPER ADAPTER O-RING FOR ADPT 8750-A ADAPTER         | 1    | Creates tension to secure adapter to freezer door.                 |

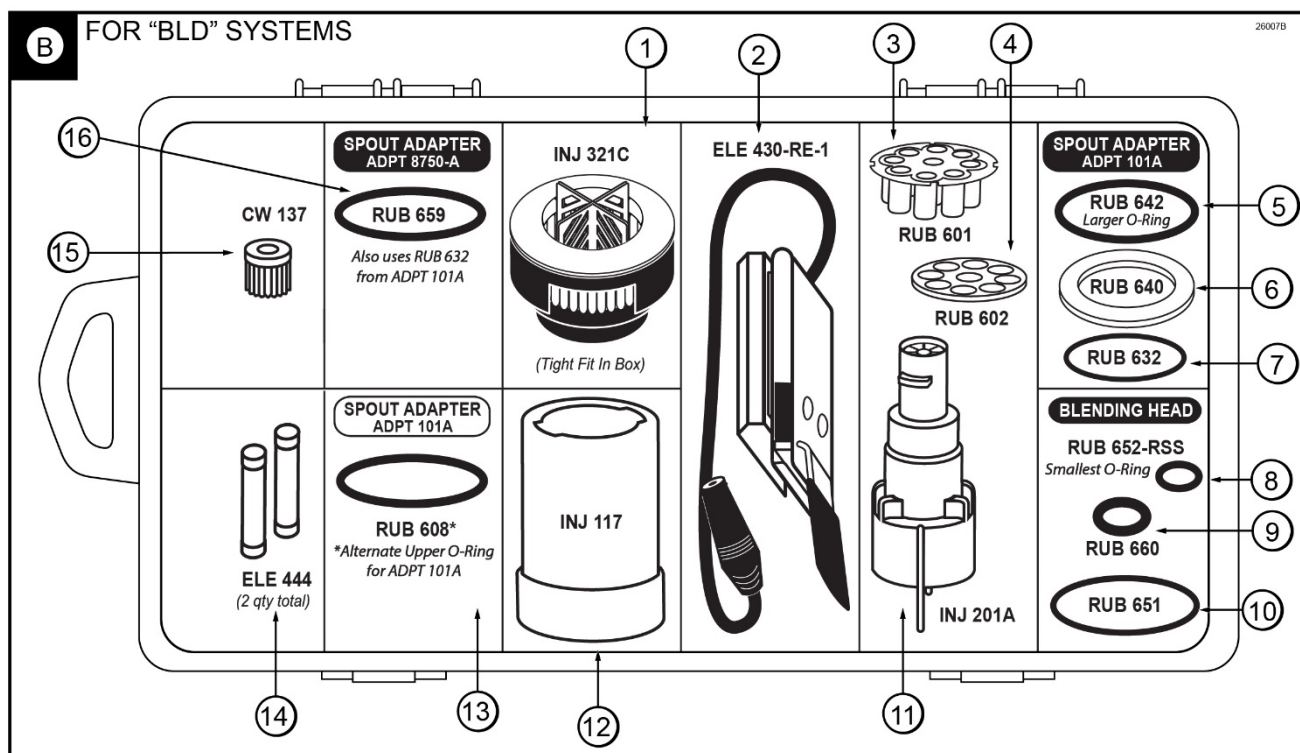


Figure 8B

**“BEV” Spare Parts Kit (See Figure 8C)**

| ITEM     | PART NO.    | DESCRIPTION   | QTY. | FUNCTION  |
|----------|-------------|---|------|---|
| <b>C</b> | SPR 5800BEV | SPARE PARTS KIT – BEVERAGE                          | 1    | <b>FOR “BEV” SYSTEMS:</b> Houses extra spare parts and wear items.    |
| 1        | INJ 321S    | GEAR CARTRIDGE ASSEMBLY – VERTICAL BEVERAGE BLENDER | 1    | Rotates product for even syrup distribution throughout slush product. |
| 2        | ELE 510     | DRAW SWITCH ASSEMBLY                                | 1    | Activates Blending Assembly.  |
| 3        | RUB 601     | 9-POS DUCKBILL CHECK VALVE                          | 1    | Provides sealed cavity to prevent leakage.                            |
| 4        | RUB 602     | 9-POS TUBE CONN. GASKET                             | 1    | Provides sealed cavity.   |
| 5        | RUB 627     | UPPER ADAPTER O-RING - FOR ADPT 104R-A              | 1    | Secures adapter to freezer door with tension.                         |
| 6        | RUB 632     | LOWER ADAPTER O-RING                                | 1    | Secures adapter to Blending Head with tension.                        |
| 7        | RUB 652-RSS | SMALLER SYRUP PORT O-RING                           | 1    | Provides sealed cavity inside syrup port.                             |
| 8        | RUB 660     | LARGER SYRUP PORT O-RING                            | 1    | Provides sealed cavity inside syrup port.                             |
| 9        | RUB 651     | INJECTOR HEAD O-RING 2-020                          | 1    | Provides a sealed cavity.   |
| 10       | INJ 201A    | SYRUP MANIFOLD                                      | 1    | Connects flavor line to Blending Head.                                |
| 11       | INJ 117     | TUBE CONNECTOR BODY -BLACK                          | 1    | Secures flavor line manifold to flavor lines.                         |
| 12       | ELE 444     | 1 AMP, 1 1/4" SLOW BLOW FUSE                        | 2    | System overload protection.   |
| 13       | CW 137      | DRIVE MOTOR GEAR                                    | 1    | Turns the Gear Box gears, powered by the Drive Motor.                 |

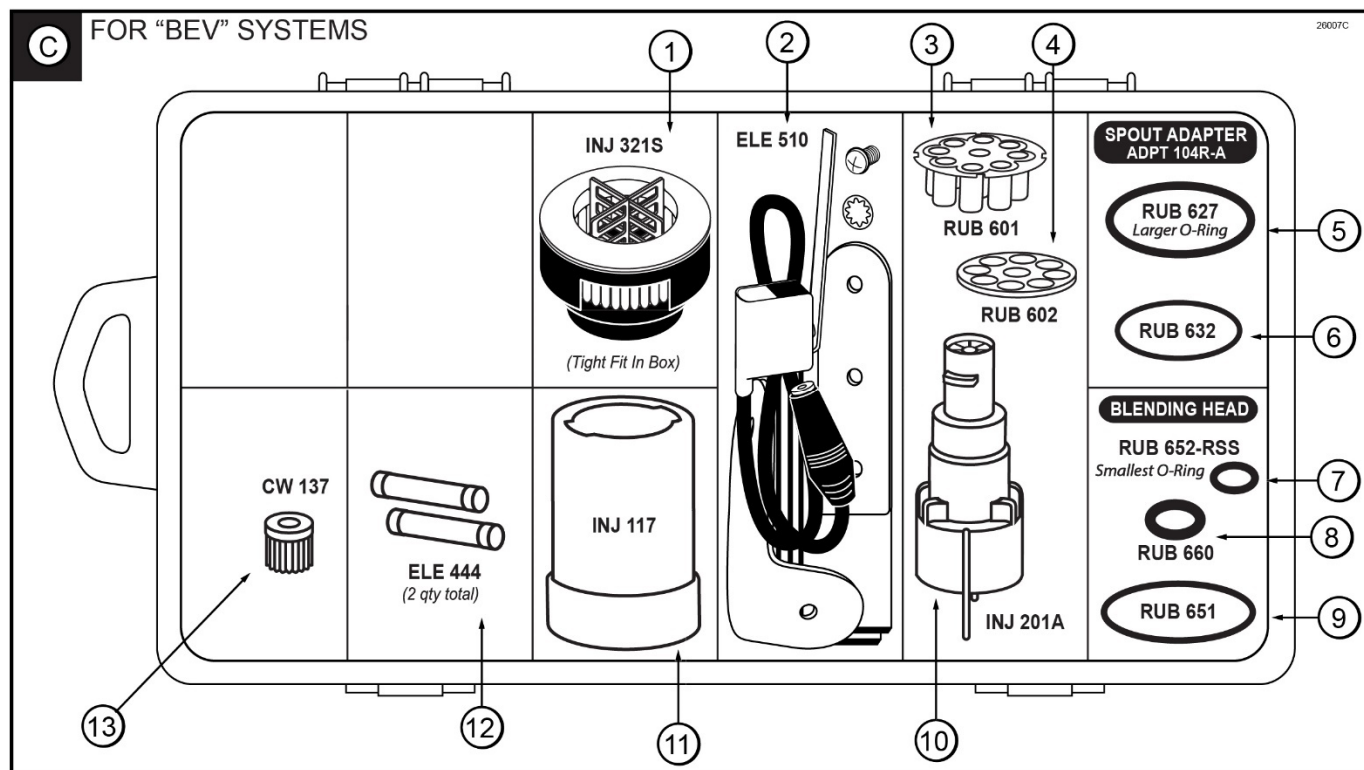


Figure 8C

**“FCB” Spare Parts Kit (See Figure 8D)**

| ITEM     | PART NO.    | DESCRIPTION                      | QTY. | FUNCTION  |
|----------|-------------|----------------------------------|------|---|
| <b>D</b> | SPR 5800FCB | SPARE PARTS KIT FOR FCB          | 1    | Houses extra spare parts and wear items.  |
| 1        | RUB 601     | 9-POS DUCKBILL CHECK VALVE       | 1    | Provides sealed cavity to prevent leakage.                                      |
| 2        | RUB 602     | 9-POS TUBE CONN. GASKET          | 1    | Provides sealed cavity.   |
| 3        | RUB 652-RSS | SMALLER SYRUP PORT O-RING        | 1    | Seals the cavity inside the syrup port.   |
| 4        | RUB 660     | LARGER SYRUP PORT O-RING         | 1    | Seals the cavity inside the syrup port.   |
| 5        | INJ 201A    | SYRUP MANIFOLD                   | 1    | Connects flavor line to the door spout.   |
| 6        | FAS 2140    | 440 x 5/8 PHILLIPS P.H. SS SCREW | 1    | Secures the magnetic actuator to the FCB door handle.                           |
| 7        | MIS 3180    | MAGNETIC ACTUATOR PIN            | 1    | Activates ELE 530 Spigot Switch. Not used with FB 80FCB Auto Draw Valve system. |
| 8        | FAS 2042    | 4/40 LOCK NUT                    | 1    | Secures the screw to the magnetic actuator.                                     |
| 9        | INJ 117     | TUBE CONNECTOR BODY - BLACK      | 1    | Secures flavor line manifold to flavor lines.                                   |
| 10       | ELE 444     | 1 AMP, 1 1/4" SLOW BLOW FUSE     | 2    | System overload protection.   |

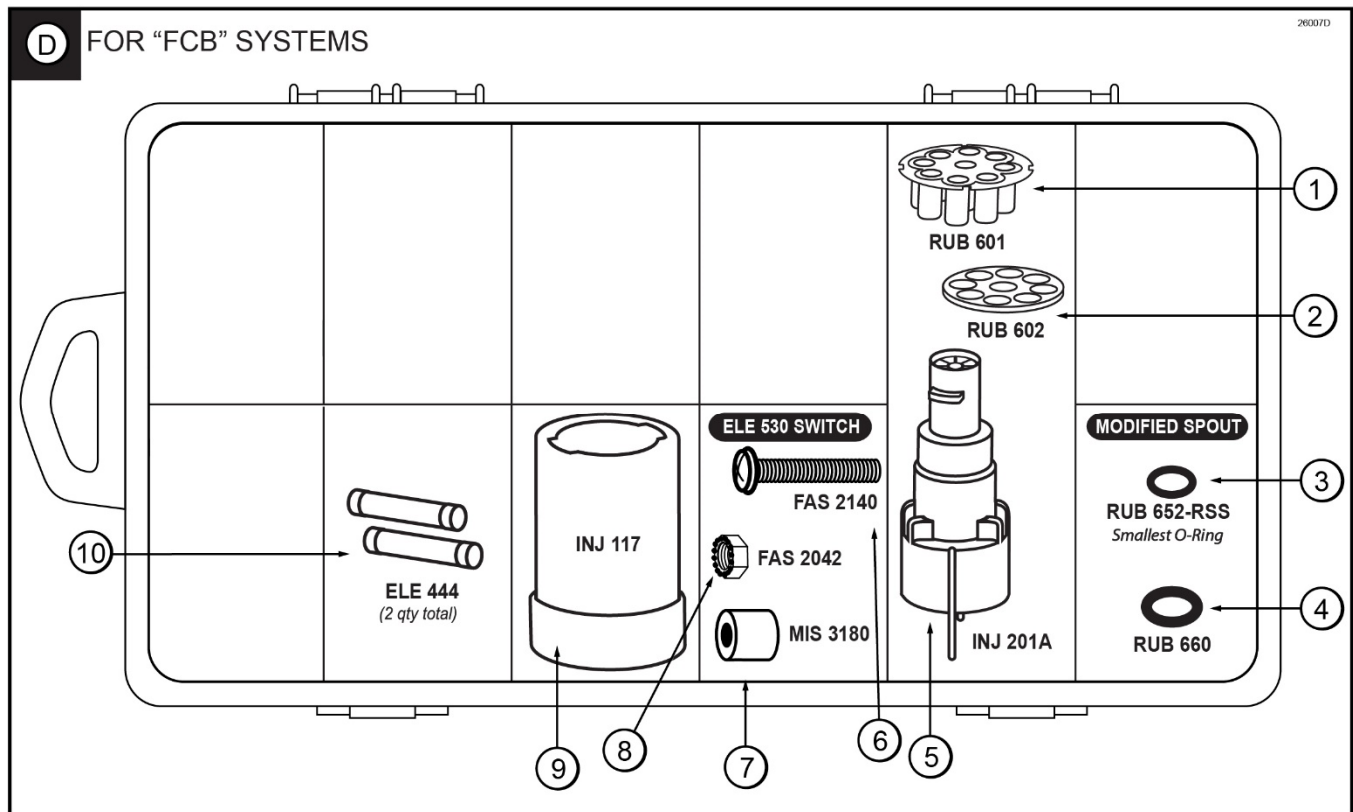


Figure 8D

**PAGE INTENTIONALLY LEFT BLANK**



## EQUIPMENT SETUP

### ADDITIONAL PRODUCTS & SUPPLIES REQUIRED:

- ENVIROKLEEN NO-RINSE CLEANER & FOOD CONTACT SANITIZER
- STERA-SHEEN® GREEN LABEL SANITIZER
- DAWN® DISH SOAP
- APPROVED, SERVICEABLE AND SANITIZED TOOLS AND BRUSHES.

(CONTACT YOUR LOCAL DISTRIBUTOR FOR RECOMMENDED PRODUCTS AND SUPPLIES).

**NOTE:** CLEAN AND SANITIZE YOUR HANDS BEFORE YOU PERFORM THE FOLLOWING PROCEDURES.

**NOTE:** INSPECT ALL WEAR ITEMS AND REPLACE IF NECESSARY.

**NOTE:** THE SYSTEM IS NOT TO BE USED BY PERSONS (INCLUDING CHILDREN) WITH REDUCED PHYSICAL, SENSORY OR MENTAL CAPABILITIES, OR LACK OF EXPERIENCE AND KNOWLEDGE, UNLESS THEY HAVE BEEN GIVEN SUPERVISION OR INSTRUCTION.

**NOTE:** CHILDREN ARE TO BE SUPERVISED WHEN USING THE SYSTEM AND SHALL NOT PLAY WITH THE SYSTEM.

**NOTE:** INSTALL THE SYSTEM WHERE AMBIENT TEMPERATURES ARE BETWEEN 60 AND 80 DEGREES FAHRENHEIT FOR CORRECT OPERATION.

**NOTE:** INSTALL THE SYSTEM IN A LOCATION WHERE ITS USE AND MAINTENANCE IS RESTRICTED TO TRAINED PERSONNEL.

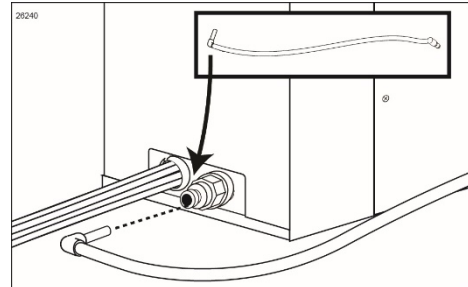
Refer to your standard manual to perform these Equipment Setup installations:

- Installing the Spout Adapter
- Installing the Touch Panel & Bracket
- Spigot Switch Options
- Installing the Spigot Switch
- Sanitizing & Installing the Spout Assembly
- Mounting the Casing Assemblies
- Connecting the Unit Syrup Line

### Installing the Sanitizer Tank

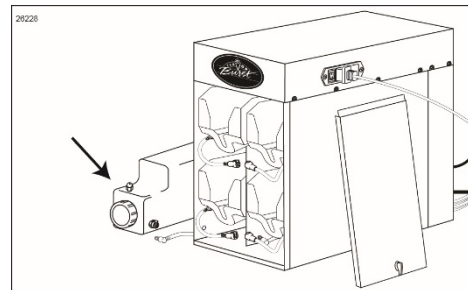
The Sanitizer Tank system provides approved sanitizer solution to specific areas of the Flavor Burst system such as the Injector Head and Syrup Lines during certain functions. The tank is designed to sit to the right side of the cabinet. If you need to install the tank elsewhere, please contact your local distributor for options.

1. Insert the Sanitizer Tank Tube fitment into the port at the lower back of the cabinet.

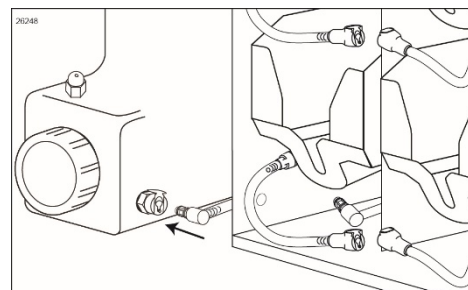


**NOTE:** FCB UNITS DO NOT HAVE THIS CONNECTION.

2. Set the Sanitizer Tank on a surface level with the bottom of the cabinet and within distance of the Sanitizer Tank Tube.



3. Connect the Sanitizer Tank Tube connector to the fitment on the sanitizer tank.



## Filling the Sanitizer Tank

The sanitizer tank system delivers solution to specific areas of the Flavor Burst® system such as the Injector/Blending Head and syrup lines during certain functions. Therefore, check the tank levels on a daily basis.

Two different sanitizing cleaners are used in the tank. Use Stera-Sheen Green Label® Sanitizer in the tank only for the duration of the Clean-In-Place procedure once every 30 days. It is approved by the NSF for cleaning the internal parts of the system, like the pumps and syrup lines. But it is formulated to be used within a few hours after mixing, after which, it begins to lose potency. It is not an effective sanitizer for the FLUSH SPOUT function for the 30 days between Clean-In-Place procedures.

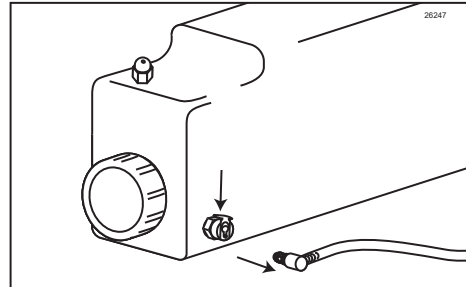
Use Envirokleen No-Rinse Cleaner & Food Contact Sanitizer in the sanitizer tank between the monthly Clean-In-Place procedures. No-Rinse Cleaner is effective for the FLUSH SPOUT function, clearing and cleaning the spout and attached pieces after a serving is finished or if a serving hasn't been made after some time. It is formulated to hold its potency for up to 30 days in the tank.

**NOTE:** USE STERA-SHEEN GREEN LABEL SANITIZER IN THE TANK FOR ONLY THE DURATION OF THE CLEAN-IN-PLACE PROCEDURE. WHEN THE PROCEDURE IS COMPLETE, YOU MUST REPLACE THE STERA-SHEEN SANITIZER WITH ENVIROKLEEN NO-RINSE CLEANER. STERA-SHEEN WILL LOSE POTENCY AFTER A FEW HOURS. ENVIROKLEEN WILL REMAIN POTENT FOR THE 30 DAYS UNTIL YOUR NEXT SCHEDULED CLEAN-IN-PLACE PROCEDURE.

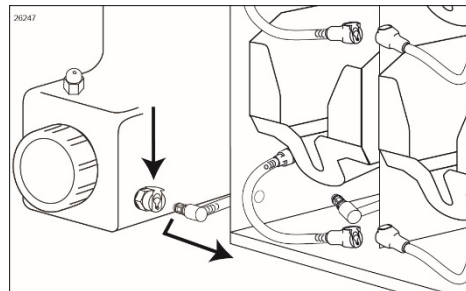
**NOTE:** DO NOT USE PLAIN WATER IN THE TANK.

**NOTE:** DO NOT USE OTHER CLEANING AGENTS IN THE TANK UNLESS APPROVED BY FLAVOR BURST. MANY AGENTS, INCLUDING BLEACH WATER, LOSE POTENCY IN AS LITTLE AS A FEW HOURS. SOME AGENTS MAY BE TOO STRONG AND COULD CORODE THE METAL PARTS OF THE ASSEMBLY.

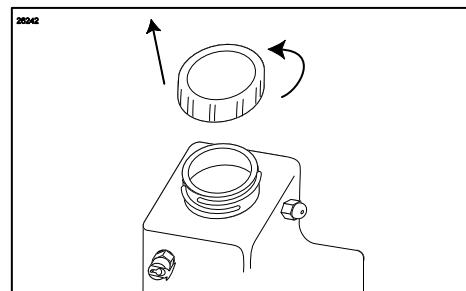
1. Wait until you are ready to perform the full Clean-In-Place Procedure (130 minute procedure) before filling the tank. When ready, mix two packets (4 oz total) of Stera-Sheen® Green Label with four gallons of warm water (108°F / 42°C) until dissolved. Pour approximately 16 oz. of sanitizer solution into a spray bottle.
2. If the sanitizer line is connected to the tank, disconnect the sanitizer line by pressing the lever on the Sanitizer Tank fitment and pulling the sanitizer supply line free.



3. Disconnect the sanitizer line by pressing the lever on the Sanitizer Tank fitment and pulling the sanitizer supply line free.

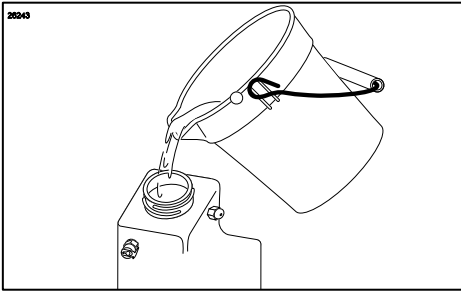


4. Set the Sanitizer Tank upright and remove the cap.



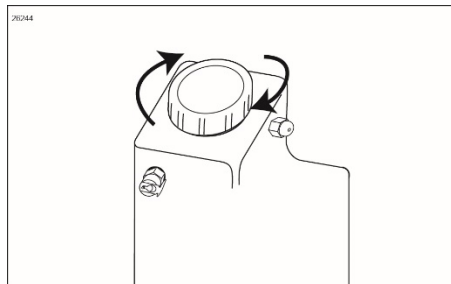


5. Fill the Sanitizer Tank with sanitizer solution.

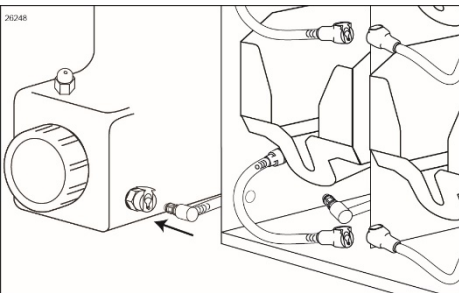


**NOTE:** USE THE REMAINING SANITIZER SOLUTION FOR MANUAL SANITIZING IN THE CLEAN-IN-PLACE PROCEDURE.

6. Reinstall the cap and tighten sufficiently. Return the Sanitizer Tank next to the cabinet.

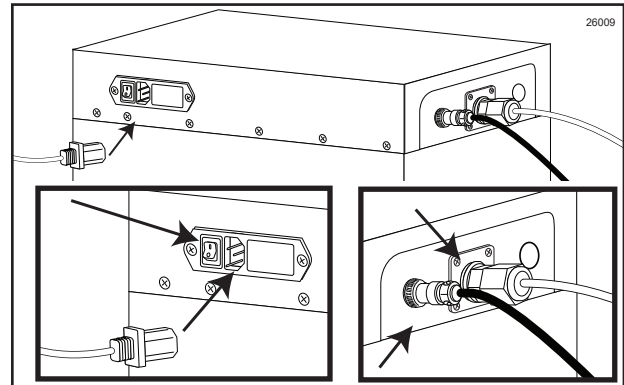


7. Reconnect the sanitizer supply line to the Sanitizer Tank.



## Power Connections and Power Up - Notes

The ethernet and Drive Motor cable connections are located on the back of the Junior cabinet. The power supply with the On-Off switch and the power cable are located on the side of the cabinet cap. This is so that the cabinet can be turned off and on more easily if the Junior cabinet is inside a cart or other cabinet.



## EQUIPMENT SETUP – Continued

Continue with the EQUIPMENT SETUP instructions in your standard operations manual(s). For systems flavoring two different product types, refer to each type of manual for setup on that freezer. For example, to install the Spigot Switch on a freezer striping soft serve product, refer to the CTP 80SS manual. For switch setup on an FCB freezer, see the CTP 80FCB manual. Perform the instructions in the following sections of EQUIPMENT SETUP:

- Power Connections and Power Up
- Installing Flavors and Priming Syrup Lines
- Color Touch Panel Overview

**PAGE INTENTIONALLY LEFT BLANK**

## OTHER IMPORTANT INFORMATION

Consult your standard manual for important information and instructions on these topics:

- Daily Opening Procedures
- Daily Closing Procedures
- Replacing the Syrup Flavors
- Scheduled Maintenance
- Color Touch Panel Overview
- Directory of Cleaning Procedures
- Parts Replacement Schedule
- Recommended Maintenance Items Replacement Schedule
- Alternate Parts and Kits by Freezer Model
- Ordering Service Information

Consult your Color Touch Panel Manual for detailed information and instructions on how to manage your Color Touch Panel functions.

## ORDERING/SERVICE INFORMATION

Taylor Distributor \_\_\_\_\_

Address \_\_\_\_\_

Phone \_\_\_\_\_

Date of Installation \_\_\_\_\_

### Data Plate

The data plate provides necessary information that the operator should record and refer to when calling for parts or service. The data plate is located on the center panel inside the cabinet.

Complete for quick reference when this information is requested.

1. Model Number: \_\_\_\_\_
2. Serial Number \_\_\_\_\_
3. Voltage \_\_\_\_\_
4. Maximum Fuse Size \_\_\_\_\_ Amps
5. Minimum Wire Ampacity \_\_\_\_\_ Amps

Flavor Burst is a registered trademark of the Flavor Burst Company. Taylor is a registered trademark of the Taylor Company. All rights reserved.