

**Flavor Burst®**  
**Integrated-2S Cabinet**  
Compatible with C20600-WFB Cart  
and C20600-WKN Cart  
- Operations Manual Supplement



**Models: CTP 80SS-INT-2S**  
**CTP 80BLD-INT-2S**  
**CTP 80BEV-INT-2S**  
**CTP 80CBB-INT-2S**  
**CTP 80FCB-INT-2S**

Manufactured by

Flavor Burst Company  
499 Commerce Drive  
Danville, IN 46122

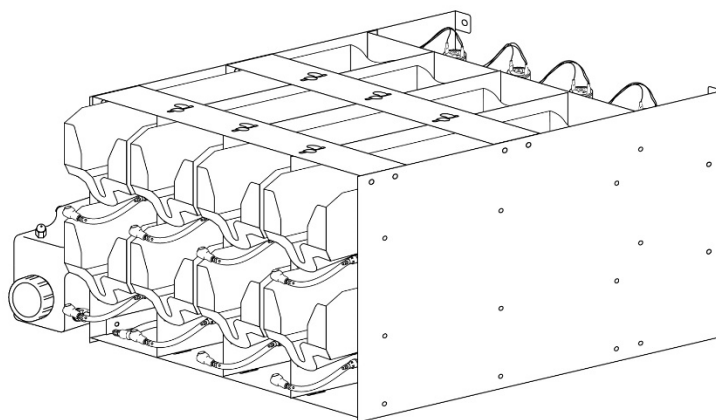
For general information and to locate a distributor near you, call or visit our website:

Phone: (317) 745-2952

Toll Free Number: (800) 264-3528

Fax: (317) 745-2377

[www.flavorburst.com](http://www.flavorburst.com)



**For pricing, ordering and support,  
contact one of our qualified  
distributors.**

**PLEASE READ FIRST!**

This supplement is not a full operations manual. It does not contain complete information on installing and maintaining your new system. The purpose of this manual supplement is to provide you with *additional* information and instruction, such as diagrams and part lists, which are either not included or are different from what is shown in the standard manual. Read through these installation and maintenance instructions first and then refer to your standard manual for the rest of the instructions. Be sure to also refer to your standard model to get complete information needed for your system.

All manuals and supplements are available on [www.flavorburst.com](http://www.flavorburst.com)

**PAGE INTENTIONALLY LEFT BLANK**

**TABLE OF CONTENTS**

**FCC Conformity Statement.....3**

**Introduction.....4**

**Safety Precautions.....4**

**Environmental Notices.....5**

**Parts Identification/Function.....7**

**Equipment Setup.....44**

    Installing the Integrated-2S Cabinet, Unit Syrup Line and Pump Harness Cable.....44

    Filling the Sanitizer Tank.....49

    EQUIPMENT SETUP – Continued.....50

**Other Important Information.....52**

**Ordering/Service Information.....53**

## **FCC Conformity Statement:**

This device complies with Part 15 of the FCC Rules. Operation is subject to the following two conditions: (1) this device may not cause harmful interference, and (2) this device must accept any interference received, including interference that may cause undesired operation.

Changes or modifications not expressly approved by the party responsible for compliance could void the user's authority to operate the equipment.

NOTE: This equipment has been tested and found to comply with the limits for a Class B digital device, pursuant to Part 15 of the FCC Rules. These limits are designed to provide reasonable protection against harmful interference in a residential installation. This equipment generates, uses and can radiate radio frequency energy and, if not installed and used in accordance with the instructions, may cause harmful interference to radio communications. However, there is no guarantee that interference will not occur in a particular installation. If this equipment does cause harmful interference to radio or television reception, which can be determined by turning the equipment off and on, the user is encouraged to try to correct the interference by one or more of the following measures:

- Reorient or relocate the receiving antenna.
- Increase the separation between the equipment and receiver.
- Connect the equipment into an outlet on a circuit different from that to which the receiver is connected.
- Consult the dealer or an experienced radio/TV technician for help.

### **FCC RF Radiation Exposure and SAR Statements SAR Statement.**

The Flavor 10\* has been tested for body-worn Specific Absorption Rate (SAR) compliance. The FCC has established detailed SAR requirements and has established that these requirements. RF Exposure Information. The radio module has been evaluated under FCC Bulletin OET 65C (01-01) and found to be compliant to the requirements as set forth in CFR 47 Sections, 2.1093, and 15.247 (b) (4) addressing RF Exposure from radio frequency devices. This model meets the applicable government requirements for exposure to radio frequency waves. The highest SAR level measured for this device was 0.293W/kg.

*\*The Flavor 10 is also referred to as the Touch Panel throughout this manual.*



## INTRODUCTION

Congratulations on your purchase of a CTP Integrated-2S flavoring system! As a food and beverage provider, your customers are your greatest asset. Your primary concern must be the health and welfare of your customers. This manual supplement provides specialty information on the parts of your equipment model that differ from the standard model. Use this supplement with your full standard manual(s) for everyday operating guidelines and procedures. We urge you to follow these instructions carefully and maintain strict sanitary practices in your daily operating routine. *\*Use this manual supplement in conjunction with the standard manual(s) included with your system.\**

The CTP Integrated-2S cabinet is an internal cabinet, designed to fit inside the Taylor C206 carts. The system is added to a soft serve / shake / slush / FCB freezer to inject concentrated flavorings throughout the product as it is dispensed. Dispensing Flavor Burst product is very simple. Select a flavor from the Touch Panel and draw the product. The Flavor Burst system will automatically flavor the product at the spout. You can also have multiple flavors per serving. Simply select the flavors from the Touch Panel and draw the product. The system will switch from one flavor to the next in a smooth, continuous motion, layering the serving with different, delicious flavors.

Flavor Burst® syrup is stored within the equipment cabinet in 1 gallon disposable bags. Proper syrup injection rate is maintained by adjusting the flavor level on the Touch Panel.

Components of the Flavor Burst system should be cleaned daily to ensure the highest standard of sanitation. When your equipment is delivered or if it has been unused for more than 24 hours, follow the DAILY OPENING PROCEDURES in your standard operations manual(s).

**NOTE:** PARTS AND PART NUMBERS MAY VARY FROM WHAT IS SHOWN AND LISTED. CONSULT YOUR LOCAL DISTRIBUTOR IF YOU HAVE ANY QUESTIONS CONCERNING DIFFERENCES.

## SAFETY PRECAUTIONS

Always follow these safety precautions when operating the Flavor Burst® system:



The Integrated-2S cabinet system must be placed inside a closed cabinet, such as the Taylor C201 cart. Do not leave the Integrated-2S cabinet exposed out in the open.



**DO NOT** operate the system without reading this operator's manual. Failure to follow this instruction may result in equipment damage, poor system performance, health hazards, or personal injury.



**DO NOT** operate the system unless it is properly grounded. Failure to follow this instruction may result in electrocution.



**DO NOT** operate the system with larger fuses than specified on the system data label. Failure to follow this instruction may result in electrocution or damage to the machine. Consult your electrician.



**DO NOT** put objects or fingers in the door spout. Failure to follow this instruction may result in contaminated product or personal injury from blade contact.



The Integrated-2S cabinet system must be placed on a level surface capable of supporting at least 220 lbs of weight. Failure to comply may result in personal injury or equipment damage.



**DO NOT** place more than 25 lbs of weight on top of the cabinet. Failure to comply may result in personal injury or equipment damage.



**DO NOT** install the unit in an area where a water jet could be used, and do not use a water jet to clean or rinse the system. Failure to follow these instructions may result in serious electrical shock.

**HAZARD COMMUNICATION STANDARD (HCS) – The procedure(s) in this manual include the use of chemical products. These chemical products will be highlighted in bold-faced letters followed by the abbreviation (HCS) in the text portion of the procedure. See the Hazard Communication Standard (HCS) manual for the appropriate Material Safety Data Sheet(s) (MSDS).**



**NOISE LEVEL:** Airborne noise emission does not exceed 70 dB(A) when measured at a distance of 1.0 meter from the surface of the machine and at a height of 1.6 meters from the floor.



**NOTE:** Operations Manual subject to change. Contact your local distributor for most recent updates concerning the CTP Integrated-2S system.



**NOTE:** Access to the service area is restricted to persons having safety / hygiene knowledge and practical experience of the appliance.



**NOTE:** This appliance can be used by children aged from 8 years and above and persons with reduced physical, sensory, or mental capabilities or lack of experience and knowledge if they have been given supervision or instruction concerning use of the appliance in a safe way and understand the hazards involved.



**NOTE:** Children shall not play with the appliance.



**NOTE:** Cleaning and user maintenance shall not be made by children without supervision.



**NOTE:** Operate unit under normal ambient temperatures between 60 and 80 degrees Fahrenheit. Unit should never be exposed to freezing temperatures.

### **ENVIRONMENTAL NOTICES**



If the crossed out wheeled bin symbol is affixed to this product, it signifies that this product is compliant with the EU Directive for Waste Electric/Electronic Goods (WEEE) as well as other similar legislation in affect after August 13, 2005. Therefore, it must be collected separately after is use is completed, and cannot be disposed of as unsorted municipal waste.

The user is responsible for returning the product to the appropriate collection facility, as specified by your local codes. For additional information regarding applicable local laws, please contact the municipal facility and/or local distributor.

**PAGE INTENTIONALLY LEFT BLANK**

## PARTS IDENTIFICATION/FUNCTIONS

### General Cabinet Overview (See Figure 1)

ITEM	PART NO.	DESCRIPTION	QTY.	FUNCTION
1	ELE 906A	TOUCH PANEL ASSEMBLY WITH BRACKET	1	Flavor Burst unit command center.
2	ELE 434	POWER CABLE	1	Supplies the electronics board with power.
3-1	INJ 424TS	INJECTOR ASSEMBLY	1* 0**	<b>FOR “SS” SYSTEMS:</b> Injects syrups into the product. *1 for 80SS systems. **0 for 80BLD, 80BEV, 80FCB, 80CBB systems.
OR...				
3-2	INJ 424BLD	FLAVOR BLEND BLENDING ASSEMBLY	1* 0**	<b>FOR “BLD” SYSTEMS:</b> Blends syrups into the product. *1 for 80BLD systems. **0 for 80SS, 80BEV, 80FCB, 80CBB systems.
OR...				
3-3	INJ 424VTS	VERTICAL BLENDING ASSEMBLY	1* 0**	<b>FOR “BEV” SYSTEMS:</b> Blends syrups into the product. *1 for 80BEV systems. **0 for 80SS, 80BLD, 80FCB, 80CBB systems.
OR...				
3-4	INJ 424P	PREMIUM BLENDING ASSEMBLY	1* 0**	<b>FOR “CBB” SYSTEMS:</b> Blends syrups into the product. *1 for 80CBB systems. **0 for 80SS, 80BLD, 80FCB systems.
OR...				
3-5	ADPT TY80S-FCB	MODIFIED FCB FREEZER SPOUT ASSEMBLY	1* 0**	<b>FOR “FCB” SYSTEMS:</b> Dispenses product blended with syrups. *1 for 80FCB systems. **0 for 80SS, 80BLD, 80BEV, 80CBB systems.
4	MIS 3196	STAINLESS TUBE / CABLE CASING ASSEMBLY	1	Attaches the flavor lines and/or cables to the side of the freezer.
5	SAN 756	SANITIZER TANK ASSEMBLY	1	Houses sanitizer cleaning solution.
6	CAB 113	FLAVOR TRAY	8	Houses syrup bags.
7-1	SYR 945	SYRUP BAG CONNECTOR ASSEMBLY	8* 0**	<b>FOR “SS”, “BLD”, “CBB” SYSTEMS:</b> Transports syrup from the bag to the pumps. *8 for 80SS, 80BLD, 80CBB systems. **0 for 80BEV & 80FCB systems.
OR...				
7-2	SYR 945SH	SYRUP TUBE ASSEMBLY - SHAKE	8* 0**	<b>FOR “BEV” &amp; “FCB” SYSTEMS:</b> Transports syrup from the bag to the pumps. *8 for 80BEV & 80FCB systems. **0 for 80SS, 80BLD, 80CBB systems.
8	N/A	INTEGRATED-2S FLAVOR BURST CABINET ASSEMBLY	1	Houses syrup trays and bags.

## General Cabinet Overview (Continued)

ITEM	PART NO.	DESCRIPTION	QTY.	FUNCTION
9	ELE 525M	MALE TO MALE 48" SWITCH EXTENSION	1	Connects Touch Panel to the freezer switch.
10	MIS 3026S	TOUCH PANEL CABLE CASING	1	Conceals and protects the Touch Panel cable, as well as attaches it to the freezer.
11-1	SPR 5800A	SPARE PARTS KIT	1* 0**	<b>FOR "SS" SYSTEMS:</b> Houses extra spare parts and wear items. *1 for 80SS systems. **0 for 80BLD, 80BEV, 80CBB, 80FCB systems.
OR...				
11-2	SPR 5800BLD	SPARE PARTS KIT TOUCHSCREEN FLAVOR BLEND	1* 0**	<b>FOR "BLD" SYSTEMS:</b> Houses extra spare parts and wear items. *1 for 80BLD systems. **0 for 80SS, 80BEV, 80CBB, 80FCB systems.
OR...				
11-3	SPR 5800BEV	SPARE PARTS KIT TOUCHSCREEN BEVERAGE	1* 0**	<b>FOR "BEV" SYSTEMS:</b> Houses extra spare parts and wear items. *1 for 80BEV systems. **0 for 80BLD, 80SS, 80CBB, 80FCB systems.
OR...				
11-4	SPR 5800P	SPARE PARTS KIT TOUCHSCREEN BEVERAGE	1* 0**	<b>FOR "BEV" SYSTEMS:</b> Houses extra spare parts and wear items. *1 for 80CBB systems. **0 for 80BLD, 80SS, 80BEV, 80FCB systems.
OR...				
11-5	SPR 5800FCB	SPARE PARTS KIT TOUCHSCREEN FCB	1* 0**	<b>FOR "FCB" SYSTEMS:</b> Houses extra spare parts and wear items. *1 for 80FCB systems. **0 for 80BLD, 80BEV, 80CBB, 80SS systems.

\*The Integrated 2S systems are compatible with the Taylor C206000-WFB mobile cart and the C20600-WKN short mobile cart. These carts include modified front and rear panels required for the installation of the Integrated-2S systems. If you have a C206 cart that does not have modified front and rear panels, contact your local Taylor distributor.

Taylor Company Parts – Not included with the integrated cabinet system. Sold separately through your local distributor. **Please note that not all freezer equipment may be suitable for the C206 cart. Ask your local distributor if your freezer is compatible and if it passes the "tip test" with the cart.**

ITEM	PART NO.	DESCRIPTION	QTY.	FUNCTION
T	TAYLOR C20600-WFB	TAYLOR MOBILE CART	X	Houses the Flavor Burst Integrated Cabinet unit. Sold separately.
T	TAYLOR C20600-WKN	TAYLOR MOBILE CART - SHORT	X	Houses the Flavor Burst Integrated Cabinet unit. Sold separately.

**PAGE INTENTIONALLY LEFT BLANK**

## General Cabinet Overview

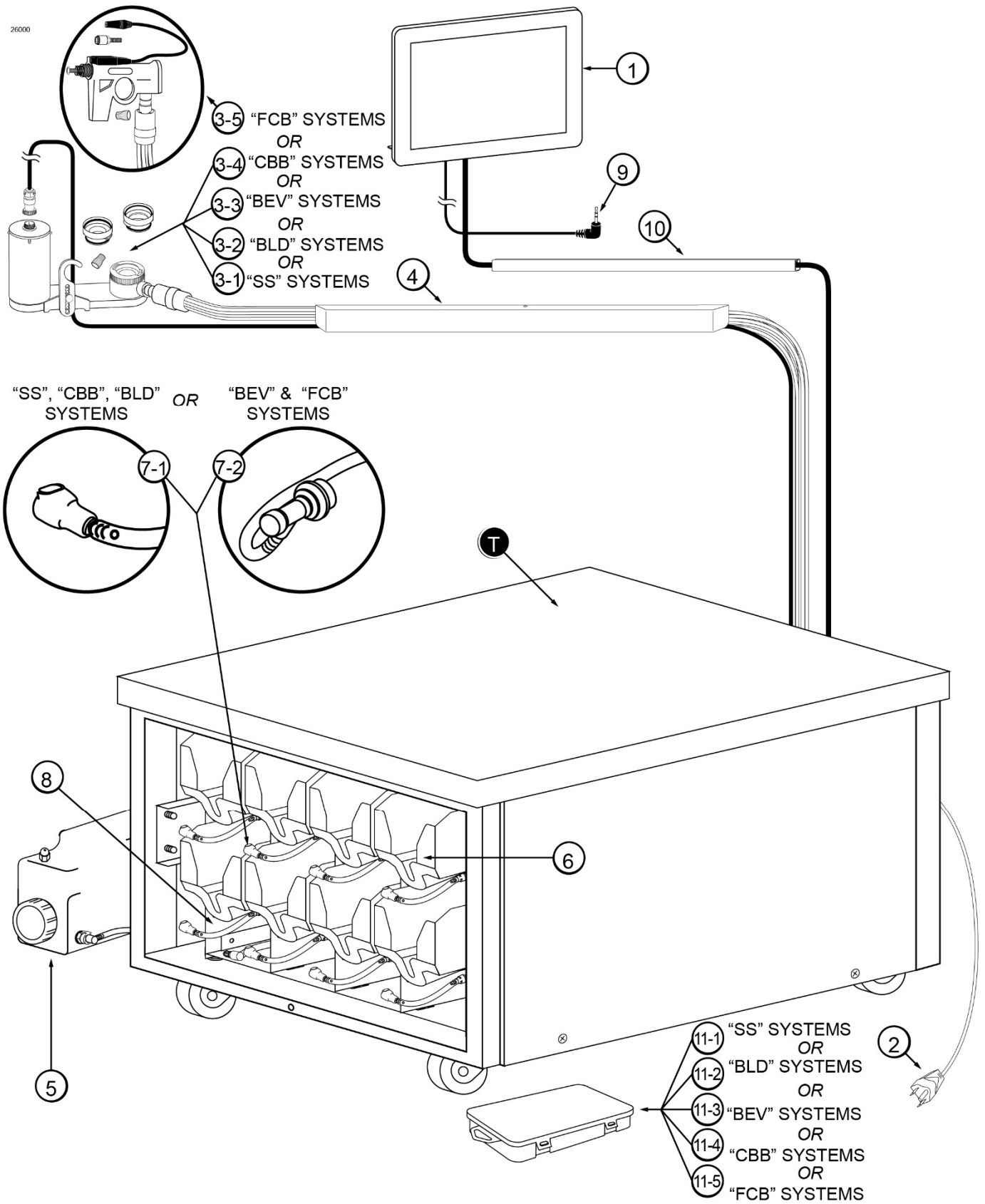


Figure 1

**Integrated-2S Cabinet (See Figure 2)**

ITEM	PART NO.	DESCRIPTION	QTY.	FUNCTION
1	CAB 457	PANEL STABILIZER BRACKET	2	Connects and secures the side and interior panels of the internal cabinet.
2	CAB 404L	LEFT SIDE CABINET PANEL	1	Holds left side syrup rails.
3	CAB 404R	RIGHT SIDE CABINET PANEL	1	Holds right side syrup rails.
4	CAB 345	SYRUP TRAY RAIL	16	Holds flavor trays in place.
5	CAB 145	TRAY SUPPORT BRACKET	8	Houses flavor line leading to syrup bag.
6	CAB 403	CABINET DIVIDER PANEL	2	Holds inner syrup rails.
7	CAB 402	CABINET BACK PANEL	1	Attaches the rear of the divider and side panels.
8	MIS 3189	SIDE PANEL FOAM BRACE	2	Secures the integrated cabinet within the Taylor C206 mobile cart.
9	CAB 433	CABINET BASE PANEL	1	Attaches the bottom of the divider and side panels.
10	MIS 3026	SURFACE RACEWAY	1	Secures 9-tube assembly to the inside of the cabinet.
11-1	MIS 3028-80M-2S	SANITIZER FLUSH TUBE ASSEMBLY – SOFT SERVE INT-2S	1* 0**	<b>FOR “SS”, “CBB”, “BLD” SYSTEMS:</b> Flushes flavor lines with sanitizer. *1 for 80SS, 80BLD, 80CBB systems. **0 for 80BEV, 80FCB systems.
OR...				
11-2	MIS 3028-80M-SH-2S	SANITIZER FLUSH TUBE ASSEMBLY – FROZEN BEVERAGE INT-2S	1* 0**	<b>FOR “BEV” SYSTEMS:</b> Flushes flavor lines with sanitizer. *1 for 80BEV systems. **0 for 80SS, 80BLD, 80FCB, 80CBB systems.
OR...				
11-3	MIS 3028S-X	PUMP FLUSH ADAPTER EXTENSION - SHAKE	1* 0**	<b>FOR “FCB” SYSTEMS:</b> Flushes flavor lines with sanitizer. *1 for 80FCB systems. **0 for 80SS, 80BLD, 80BEV, 80CBB systems.
12-1	SYR 307	PERISTALTIC SYRUP PUMP – SOFT SERVE	8* 0**	<b>FOR “SS” “CBB” &amp; “BLD” SYSTEMS:</b> Pumps syrup from bags into flavor lines. *8 for 80SS, 80BLD systems. **0 for 80BEV, 80FCB, 80CBB systems.
OR...				
12-2	SYR 926	PERISTALTIC SYRUP PUMP – BEVERAGE	8* 0**	<b>FOR “BEV” &amp; “FCB” SYSTEMS:</b> Pumps syrup from bags into flavor lines. *8 for 80BEV, 80FCB systems. **0 for 80SS, 80BLD, 80CBB systems.
OR...				
12-3	SYR 926P	PERISTALTIC SYRUP PUMP – PREMIUM BEVERAGE	8* 0**	<b>FOR “CBB” SYSTEMS:</b> Pumps syrup from bags into flavor lines. *8 for 80CBB systems. **0 for 80SS, 80BLD, 80BEV, 80FCB systems.
13	FAS 2071	THUMB SCREW	1	Secures the front C206 panel to the cart.
14	SAN 748	PERISTALTIC SANITIZER PUMP	1	Pumps sanitizer solution to flush tube and sanitizer line.



### Integrated-2S Cabinet – (Continued)

ITEM	PART NO.	DESCRIPTION	QTY.	FUNCTION
15	FAS 2035	8-32 NUTS - EXT. LOCK WASHER	9	Secures the screw.
16	FAS 2024	8-32 X 1/4 PAN HEAD SCREW	38	Secures various parts within the system.
17	CAB 455	SYRUP PUMP SHELF	2	Secures the pumps within the cabinet.
18	ELE 455A	SANITIZER PUMP SUPPORT BRACKET	1	Secures the sanitizer pump to the bracket frame.
19	SYR 927	INTERNAL 9-TUBE ASSEMBLY	1	Transports syrup from bags to the 9-Tube Assembly.
20	ELE 932INT-2S	PUMP & SANITIZER CABLE HARNESS – INT-2S	1	Provides power to the syrup and sanitizer pumps.
21-1	SYR 945	SYRUP BAG CONNECTOR ASSEMBLY – SOFT SERVE	8* 0**	<b>FOR “SS”, “CBB”, “BLD” SYSTEMS:</b> Transports syrup from the bag to pumps. *8 for 80SS, 80BLD, 80CBB systems. **0 for 80BEV, 80FCB systems.
OR...				
21-2	SYR 945SH	SYRUP TUBE ASSEMBLY - SHAKE	8* 0**	<b>FOR “BEV” and “FCB” SYSTEMS:</b> Transports syrup from the bag to pumps. *8 for 80BEV, 80FCB systems. **0 for 80SS, 80BLD, 80CBB systems

\*The Integrated 2S systems are compatible with the Taylor C206000-WFB mobile cart and the C20600-WKN short mobile cart. These carts include modified front and rear panels required for the installation of the Integrated-2S systems. If you have a C206 cart that does not have modified front and rear panels, contact your local Taylor distributor.

Taylor Company Parts – Not included with the integrated cabinet system. Sold separately through your local distributor. **Please note that not all freezer equipment may be suitable for the C206 cart. Ask your local distributor if your freezer is compatible and if it passes the “tip test” with the cart.**

ITEM	PART NO.	DESCRIPTION	QTY.	FUNCTION
T	CAB 458F	TAYLOR C20600-WFB FRONT PANEL - SHORT	X	Modified front panel to the C206-WFB Taylor Cart.
T	CAB 458F-T	TAYLOR C20600-WKN FRONT PANEL	X	Modified front panel to the C206-WKN Taylor Cart.

**PAGE INTENTIONALLY LEFT BLANK**

# Integrated-2S Cabinet (See Figure 2)

28001

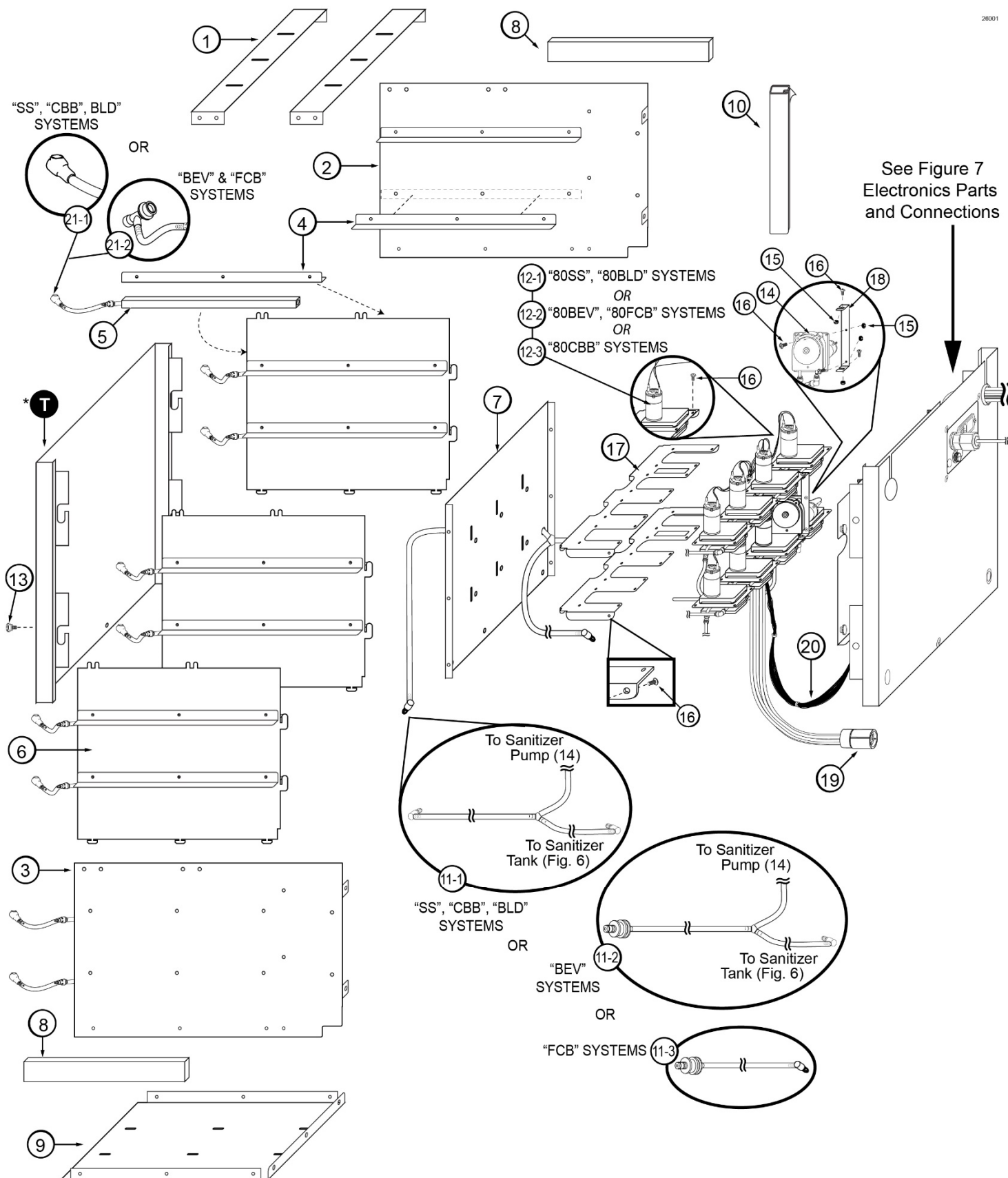


Figure 2

**“SS” Injector Assembly and Related Parts (See Figure 3A)**

ITEM	PART NO.	DESCRIPTION	QTY.	FUNCTION
<b>A</b>	INJ 424TS	INJECTOR ASSEMBLY WITH SYRUP LINES, ADAPTER, & BRACKET	1* 0**	<b>FOR “SS” SYSTEMS:</b> Injects syrups into the product. *1 for 80SS systems. **0 for 80BEV, 80BLD, 80FCB, 80CBB systems.
1	INJ 422	INJECTOR HEAD ASSEMBLY	1	Connects flavor line to inject syrups into product.
1A	RUB 652-RSS	SMALLER SYRUP PORT O-RING	1 ea.	Provides sealed cavity inside syrup port.
1B	RUB 651	INJECTOR HEAD O-RING 2-020	1 ea.	Provides a sealed cavity.
1C	RUB 660	LARGER SYRUP PORT O-RING	1 ea.	Provides sealed cavity inside syrup port.
2	INJ 321	GEAR CARTRIDGE ASSEMBLY	1	Rotates product for even syrup distribution.
3	SYR 932	6' 9-TUBE ASSEMBLY	1	Supplies syrup to Injector Head from pumps.
3A	FAS 2051	ROLLED FLANGE EYELET	18 ea.	Provides tension in syrup line to affix to line coupler.
3B	ROT 510	LINE COUPLER	2 ea.	Holds flavor lines in place.
3C	ROT 515-C	9-TUBE ASSEMBLY WAVE SPRING	1 ea.	Provides tension between tube connectors.
3D	INJ 116	LINE COUPLER NUT - BLACK	1 ea.	Attaches flavor tubes to flavor manifold.
3E	SYR 901	6' 9-TUBE ASSEMBLY TUBES	9 ea.	Brings syrup from pump to Injector Head.
3F	ROT 511	LINE COUPLER NUT	1 ea.	Connects flavor lines to the internal 9-Tube Assembly.
3G	RUB 602	9-POS TUBE CONN. GASKET	1 ea.	Provides sealed cavity.
4	INJ 117	TUBE CONNECTOR BODY –BLACK	1	Secures flavor line manifold to flavor lines.
5	MIS 3142	FLAVOR LINE DUST CAP – FB 80	1	Covers syrup manifold when not connected.
6	INJ 201A	SYRUP MANIFOLD - BLACK	1	Connects flavor line to Injector Head.
7	RUB 601	9-POS DUCKBILL CHECK VALVE	1	Provides sealed cavity and prevents syrup leakage.
8	MIS 3143	SUSPENSION BRACKET ASSEMBLY	1	Secures Injector Assembly to freezer door.
8A	FAS 2107	INJECTOR BRACKET KNOB	1 ea.	Secures the two bracket pieces.
8B	MIS 3143A	SUSPENSION BRACKET PART A	1 ea.	Attaches to freezer door bolts to hang Injector Assembly.
8C	MIS 3143B	SUSPENSION BRACKET PART B	1 ea.	Secures Bracket Assembly to Injector Assembly.
8D	MIS 3144	NYLON SHOULDER WASHER	1 ea.	Allows free horizontal movement for bracket
8E	ROT 535	ROTOR BRACKET SPRING WASHER	1 ea.	Allows space between hanging and base brackets

**“SS” Injector Assembly and Related Parts (Continued)**

ITEM	PART NO.	DESCRIPTION	QTY.	FUNCTION
9	INJ 323TS	INJECTOR ASSEMBLY - NO HEAD	1	Powers Injector system.
9A	INJ 330TS	INJECTOR MOTOR ASSEMBLY	1 ea.	Supplies power to Motor which turns gears.
9B	INJ 331	INJECTOR GEARBOX ASSEMBLY	1 ea.	Gears turn Gear Cartridge for even syrup distribution.
9C	FAS 2023	ACCESSORY MOUNTING BRACKET KNOB	1 ea.	Secures base Mounting Bracket to Gear Box.
10	ADPT 8750-A	CROWN ADAPTER WITH O-RINGS	1	Attaches Injector Assembly to freezer door.
10A	RUB 659	TAYLOR ADAPTER O-RING 8750	1 ea.	Creates tension to secure adapter to freezer door.
10B	ADPT 8750	CROWN ADAPTER WITOUT O-RINGS	1 ea.	Attaches Injector Assembly to freezer door.
10C	RUB 632	INJECTOR ADAPTER O-RING	1 ea.	Creates tension to secure adapter to Injector Head.
11	ADPT 101A	INJECTOR ADAPTER W/ O-RINGS	1	Attaches Injector Assembly to freezer door.
11A	RUB 642	ADAPTER O-RING	1 ea.	Creates tension to secure adapter to freezer door.
11B	RUB 640	FLAT ADAPTER GASKET	1 ea.	Provides sealed cavity inside adapter.
11C	ADPT 101	INJECTOR ADAPTER	1 ea.	Attaches Injector Assembly to freezer.
11D	RUB 632	INJECTOR ADAPTER O-RING	1 ea.	Creates tension to secure adapter to Injector Head.

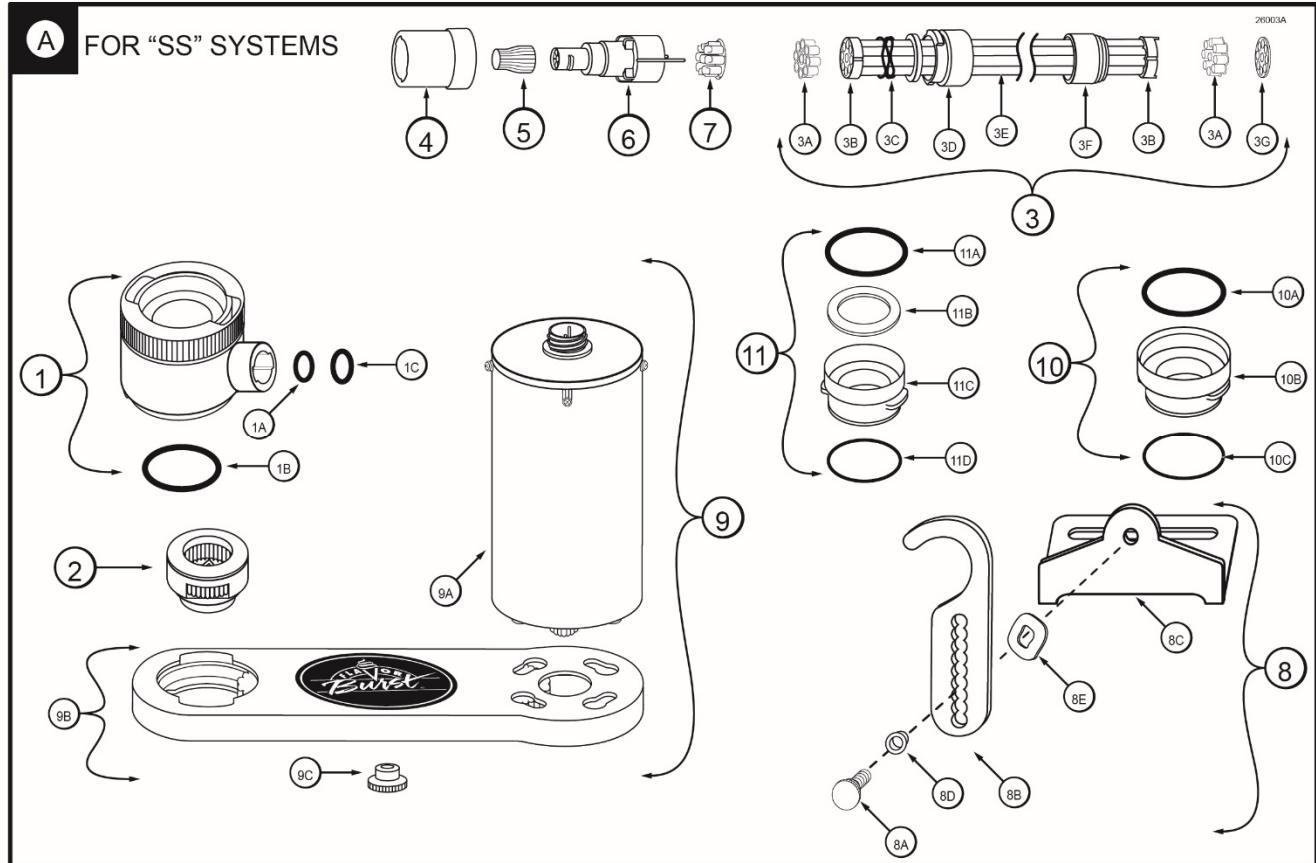


Figure 3A

**“BLD” Blending Assembly and Related Parts (See Figure 3B)**

ITEM	PART NO.	DESCRIPTION	QTY.	FUNCTION
<b>B</b>	INJ 424BLD	FLAVOR BLEND BLENDING ASSEMBLY WITH SYRUP LINES, ADAPTER, & BRACKET	1* 0**	<b>FOR “BLD” SYSTEMS:</b> Blends syrups into the product. *1 for 80BLD systems. **0 for 80SS, 80BEV, 80FCB, 80CBB systems.
1	ADPT 101A	INJECTOR ADAPTER W/ O-RINGS	1	Attaches Blending Assembly to freezer door.
1A	RUB 642	ADAPTER O-RING	1 ea.	Creates tension to secure adapter to freezer door.
1B	RUB 640	FLAT ADAPTER GASKET	1 ea.	Provides sealed cavity inside adapter.
1C	ADPT 101	INJECTOR ADAPTER	1 ea.	Attaches Blending Assembly to freezer.
1D	RUB 632	INJECTOR ADAPTER O-RING	1 ea.	Creates tension to secure adapter to Blending Head.
2	INJ 422C	BLENDING HEAD ASSEMBLY	1	Connects flavor line to inject syrups into product.
2A	RUB 652-RSS	SMALLER SYRUP PORT O-RING	1 ea.	Provides sealed cavity inside syrup port.
2B	RUB 651	BLENDING HEAD O-RING 2-020	1 ea.	Provides a sealed cavity.
2C	RUB 660	LARGER SYRUP PORT O-RING	1 ea.	Provides sealed cavity inside syrup port.
3	INJ 321C	GEAR CARTRIDGE ASSEMBLY	1	Rotates product for even syrup distribution.
4	SYR 932	6' 9-TUBE ASSEMBLY	1	Supplies syrup to Blending Head from pumps.
4A	FAS 2051	ROLLED FLANGE EYELET	18 ea.	Provides tension in syrup line to affix to line coupler.
4B	ROT 510	LINE COUPLER	2 ea.	Holds flavor lines in place.
4C	ROT 515-C	9-TUBE ASSEMBLY WAVE SPRING	1 ea.	Provides tension between tube connectors.
4D	INJ 116	LINE COUPLER NUT - BLACK	1 ea.	Attaches flavor tubes to flavor manifold.
4E	SYR 901	6' 9-TUBE ASSEMBLY TUBES	9 ea.	Brings syrup from pump to Blending Head.
4F	ROT 511	LINE COUPLER NUT	1 ea.	Connects flavor lines to the internal 9-Tube Assembly.
4G	RUB 602	9-POS TUBE CONN. GASKET	1 ea.	Provides sealed cavity.
5	INJ 117	TUBE CONNECTOR BODY –BLACK	1	Secures flavor line manifold to flavor lines.
6	MIS 3142	FLAVOR LINE DUST CAP – FB 80	1	Covers syrup manifold when not connected.
7	INJ 201A	SYRUP MANIFOLD - BLACK	1	Connects flavor line to Blending Head.
8	RUB 601	9-POS DUCKBILL CHECK VALVE	1	Provides sealed cavity and prevents syrup leakage.
9	INJ 331	BLENDING GEARBOX ASSEMBLY	1	Gears turn Gear Cartridge for even syrup distribution.
9A	FAS 2023	ACCESSORY MOUNTING BRACKET KNOB	1 ea.	Secures base Mounting Bracket to Gear Box.
10	INJ 330HSB	HIGH SPEED BLENDING MOTOR ASSEMBLY	1	Powers Blending system.

**“BLD” Blending Assembly and Related Parts (Continued)**

ITEM	PART NO.	DESCRIPTION	QTY.	FUNCTION
11	MIS 3147	SUSPENSION BRACKET FOR BLEND ASSEMBLY	1	Secures Blending Assembly to freezer door.
11A	MIS 3147A	DOOR BRACKET	1 ea.	Secures the bracket to the freezer door.
11B	MIS 3147B	BASE BRACKET	1 ea.	Supports the Gear Box.
11C	MIS 3147C	VERTICAL ADJUSTMENT BRACKET	1 ea.	Secures the door and base brackets and creates a hinge on the bracket assembly.
11D	FAS 2107	THUMB KNOB	2 ea.	Secures the base bracket to the vertical adjustment bracket.
11E	FAS 2024	8-32 x 1/4 PAN HEAD SCREW	2 ea.	Secures the door bracket to the vertical adjustment bracket.
11F	FAS 2035	8-32 NUT EXT. WASHER	2 ea.	Locks the screws in place so they don't loosen.
11G	FAS 2177	NYLON LOCKING NUT	3 ea.	Secures the suspension bracket to the Gear Box.
12	ADPT 8750-A	CROWN ADAPTER WITH O-RINGS	1	Attaches Blending Assembly to freezer door.
12A	RUB 659	TAYLOR ADAPTER O-RING 8750	1 ea.	Creates tension to secure adapter to freezer door.
12B	ADPT 8750	CROWN ADAPTER WITOUT O-RINGS	1 ea.	Attaches Blending Assembly to freezer door.
12C	RUB 632	INJECTOR ADAPTER O-RING	1 ea.	Creates tension to secure adapter to Blending Head.

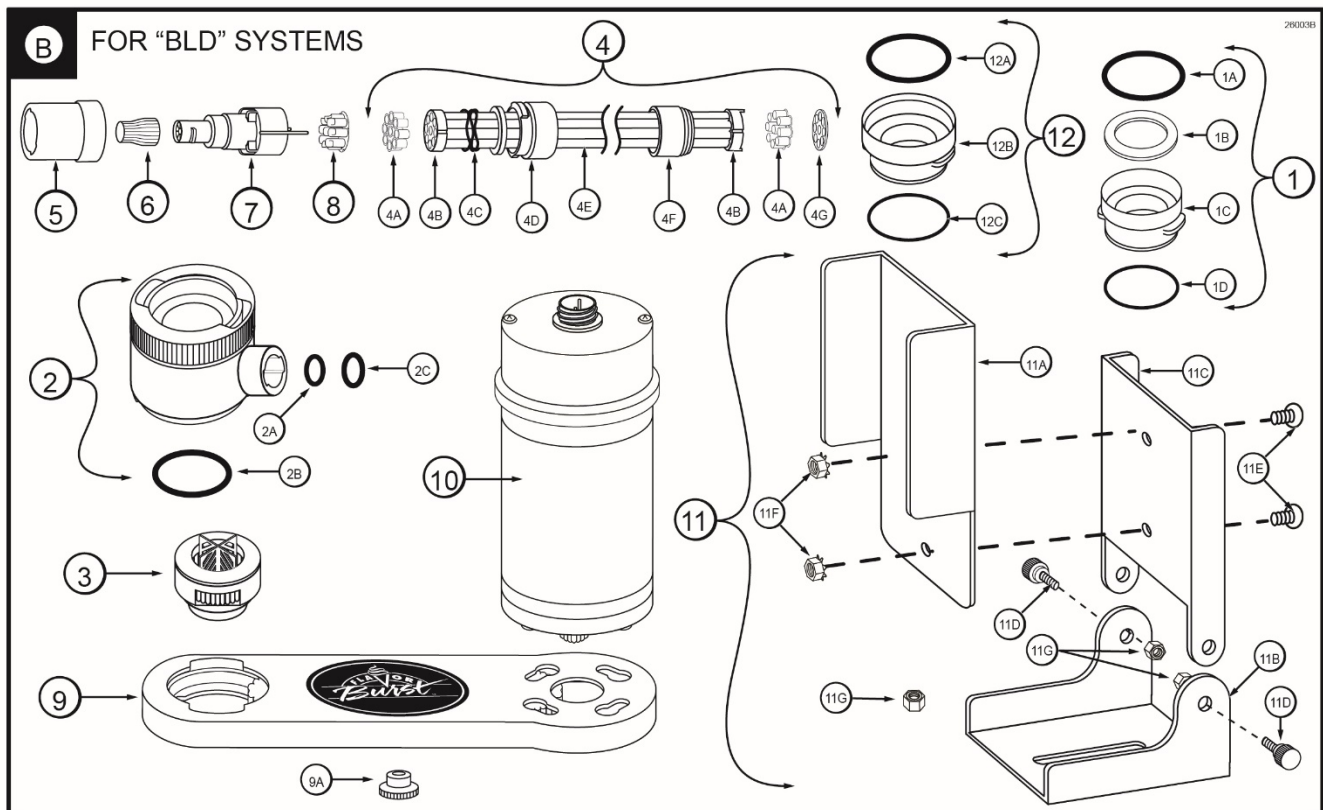


Figure 3B

**“BEV” Blending Assembly and Related Parts (See Figure 3C)**

ITEM	PART NO.	DESCRIPTION	QTY.	FUNCTION
<b>C</b>	INJ 424VTS	VERTICAL BLENDING ASSEMBLY WITH SYRUP LINES, ADAPTER, & BRACKET	1* 0**	<b>FOR “BEV” SYSTEMS:</b> Blends syrups into the product. *1 for 80BEV systems. **0 for 80SS, 80BLD, 80FCB, 80CBB systems.
1	INJ 422VS	BLENDING HEAD ASSEMBLY	1 ea.	Connects flavor line to inject syrups into product.
1A	RUB 652-RSS	SMALLER SYRUP PORT O-RING	1 ea.	Provides sealed cavity inside syrup port.
1B	RUB 651	BLENDING HEAD O-RING 2-020	1 ea.	Provides a sealed cavity.
1C	RUB 660	LARGER SYRUP PORT O-RING	1 ea.	Provides sealed cavity inside syrup port.
2	INJ 321S	GEAR CARTRIDGE ASSEMBLY – VERTICAL BLENDER	1	Rotates product for even syrup distribution throughout slush product.
3	SYR 932	6' 9-TUBE ASSEMBLY	1	Supplies syrup to Blending Head from pumps.
3A	FAS 2051	ROLLED FLANGE EYELET	18 ea.	Provides tension in syrup line to affix to line coupler.
3B	ROT 510	LINE COUPLER	2 ea.	Holds flavor lines in place.
3C	ROT 515-C	9-TUBE ASSEMBLY WAVE SPRING	1 ea.	Provides tension between tube connectors.
3D	INJ 116	LINE COUPLER NUT - BLACK	1 ea.	Attaches flavor tubes to flavor manifold.
3E	SYR 901	6' 9-TUBE ASSEMBLY TUBES	9 ea.	Brings syrup from pump to Blending Head.
3F	ROT 511	LINE COUPLER NUT	1 ea.	Connects flavor lines to the internal 9-Tube Assembly.
3G	RUB 602	9-POS TUBE CONN. GASKET	1 ea.	Provides sealed cavity.
4	INJ 117	TUBE CONNECTOR BODY –BLACK	1	Secures flavor line manifold to flavor lines.
5	MIS 3142	FLAVOR LINE DUST CAP – FB 80	1	Covers syrup manifold when not connected.
6	INJ 201A	SYRUP MANIFOLD - BLACK	1	Connects flavor line to Blending Head.
7	RUB 601	9-POS DUCKBILL CHECK VALVE	1	Provides sealed cavity and prevents syrup leakage.
8	MIS 3143	BLENDING SUSPENSION BRACKET ASSEMBLY	1	Secures Blending Assembly to the freezer door.
8A	FAS 2107	INJECTOR BRACKET KNOB	1 ea.	Secures the two bracket pieces.
8B	MIS 3143A	BLENDING BRACKET PART A	1 ea.	Attaches to freezer door bolts to hang Blending Assembly.
8C	MIS 3143B	BLENDING BRACKET PART B	1 ea.	Secures Bracket Assembly to Blending Assembly.



**“BEV” Blending Assembly and Related Parts (Continued)**

ITEM	PART NO.	DESCRIPTION	QTY.	FUNCTION
9	INJ 323TS	BLENDING ASSEMBLY - NO HEAD	1	Powers Blending system.
9A	INJ 330TS	BLENDING MOTOR ASSEMBLY	1 ea.	Powers Blending system.
9B	INJ 331	BLENDING GEARBOX ASSEMBLY	1 ea.	Gears turn Gear Cartridge for even syrup distribution.
9C	FAS 2023	ACCESSORY MOUNTING BRACKET KNOB	1 ea.	Secures base Mounting Bracket to Gear Box.
10	ADPT 104R-A	CROWN ADAPTER WITH O-RINGS	1	Attaches Blending Assembly to freezer door.
10A	RUB 627	TAYLOR ADAPTER O-RING 8750	1 ea.	Creates tension to secure adapter to freezer door.
10B	ADPT 104R	CROWN ADAPTER WITOUT O-RINGS	1 ea.	Attaches Blending Assembly to freezer door.
10C	RUB 632	BLENDING ADAPTER O-RING	1 ea.	Creates tension to secure adapter to Blending Head.

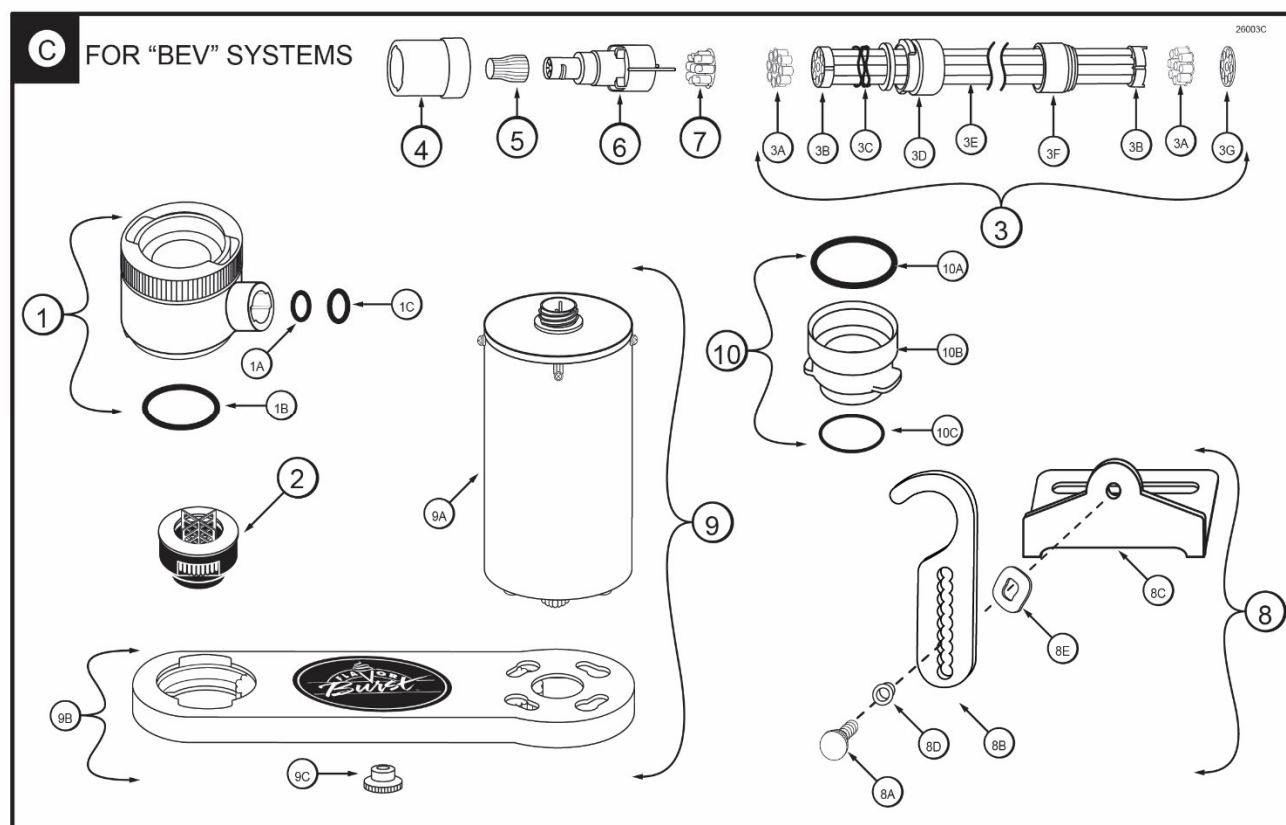


Figure 3C

**“CBB” Blending Assembly and Related Parts (See Figure 3D)**

ITEM	PART NO.	DESCRIPTION	QTY.	FUNCTION
<b>D</b>	INJ 424P	PREMIUM BLENDING ASSEMBLY WITH SYRUP LINES, ADAPTER, & BRACKET	1* 0**	<b>FOR “CBB” SYSTEMS:</b> Blends syrups into the product. *1 for 80CBB systems. **0 for 80SS, 80BLD, 80FCB, 80BEV systems.
1	INJ 422C	BLENDING HEAD ASSEMBLY	1 ea.	Connects flavor line to inject syrups into product.
1A	RUB 652-RSS	SMALLER SYRUP PORT O-RING	1 ea.	Provides sealed cavity inside syrup port.
1B	RUB 651	BLENDING HEAD O-RING 2-020	1 ea.	Provides a sealed cavity.
1C	RUB 660	LARGER SYRUP PORT O-RING	1 ea.	Provides sealed cavity inside syrup port.
2	INJ 321P	GEAR CARTRIDGE ASSEMBLY – PERMIUM BLEND	1	Rotates product for even syrup distribution throughout slush product.
3	SYR 932	6' 9-TUBE ASSEMBLY	1	Supplies syrup to Blending Head from pumps.
3A	FAS 2051	ROLLED FLANGE EYELET	18 ea.	Provides tension in syrup line to affix to line coupler.
3B	ROT 510	LINE COUPLER	2 ea.	Holds flavor lines in place.
3C	ROT 515-C	9-TUBE ASSEMBLY WAVE SPRING	1 ea.	Provides tension between tube connectors.
3D	INJ 116	LINE COUPLER NUT - BLACK	1 ea.	Attaches flavor tubes to flavor manifold.
3E	SYR 901	6' 9-TUBE ASSEMBLY TUBES	9 ea.	Brings syrup from pump to Blending Head.
3F	ROT 511	LINE COUPLER NUT	1 ea.	Connects flavor lines to the internal 9-Tube Assembly.
3G	RUB 602	9-POS TUBE CONN. GASKET	1 ea.	Provides sealed cavity.
4	INJ 117	TUBE CONNECTOR BODY –BLACK	1	Secures flavor line manifold to flavor lines.
5	MIS 3142	FLAVOR LINE DUST CAP – FB 80	1	Covers syrup manifold when not connected.
6	INJ 201A	SYRUP MANIFOLD - BLACK	1	Connects flavor line to Blending Head.
7	RUB 601	9-POS DUCKBILL CHECK VALVE	1	Provides sealed cavity and prevents syrup leakage.
8	MIS 3143	BLENDING SUSPENSION BRACKET ASSEMBLY	1	Secures Blending Assembly to the freezer door.
8A	FAS 2107	INJECTOR BRACKET KNOB	1 ea.	Secures the two bracket pieces.
8B	MIS 3143A	BLENDING BRACKET PART A	1 ea.	Attaches to freezer door bolts to hang Blending Assembly.
8C	MIS 3143B	BLENDING BRACKET PART B	1 ea.	Secures Bracket Assembly to Blending Assembly.

**“CBB” Blending Assembly and Related Parts (Continued)**

ITEM	PART NO.	DESCRIPTION	QTY.	FUNCTION
9	INJ 323TS	BLENDING ASSEMBLY - NO HEAD	1	Powers Blending system.
9A	INJ 330HSB	HIGH SPEED BLENDING MOTOR ASSEMBLY	1 ea.	Powers Blending system.
9B	INJ 331	BLENDING GEARBOX ASSEMBLY	1 ea.	Gears turn Gear Cartridge for even syrup distribution.
9C	FAS 2023	ACCESSORY MOUNTING BRACKET KNOB	1 ea.	Secures base Mounting Bracket to Gear Box.
10	ADPT 104R-A	CROWN ADAPTER WITH O-RINGS	1	Attaches Blending Assembly to freezer door.
10A	RUB 627	TAYLOR ADAPTER O-RING 8750	1 ea.	Creates tension to secure adapter to freezer door.
10B	ADPT 104R	CROWN ADAPTER WITOUT O-RINGS	1 ea.	Attaches Blending Assembly to freezer door.
10C	RUB 632	BLENDING ADAPTER O-RING	1 ea.	Creates tension to secure adapter to Blending Head.
11	MIS 3143A	BLENDING BRACKET PART A	1	Attaches to freezer door bolts to hang Blending Assembly.
12	ADPT 8750-A	CROWN ADAPTER WITH O-RINGS	1	Attaches Blending Assembly to freezer door.
12A	RUB 659	TAYLOR ADAPTER O-RING 8750	1 ea.	Creates tension to secure adapter to freezer door.
12B	ADPT 8750	CROWN ADAPTER WITOUT O-RINGS	1 ea.	Attaches Blending Assembly to freezer door.
12C	RUB 632	INJECTOR ADAPTER O-RING	1 ea.	Creates tension to secure adapter to Blending Head.
13	MIS 3147	SUSPENSION BRACKET FOR BLEND ASSEMBLY	1	Secures Blending Assembly to freezer door.
13A	MIS 3147A	DOOR BRACKET	1 ea.	Secures the bracket to the freezer door.
13B	MIS 3147B	BASE BRACKET	1 ea.	Supports the Gear Box.
13C	MIS 3147C	VERTICAL ADJUSTMENT BRACKET	1 ea.	Secures the door and base brackets and creates a hinge on the bracket assembly.
13D	FAS 2107	THUMB KNOB	2 ea.	Secures the base bracket to the vertical adjustment bracket.
13E	FAS 2024	8-32 x 1/4 PAN HEAD SCREW	2 ea.	Secures the door bracket to the vertical adjustment bracket.
13F	FAS 2035	8-32 NUT EXT. WASHER	2 ea.	Locks the screws in place so they don't loosen.
13G	FAS 2177	NYLON LOCKING NUT	3 ea.	Secures the suspension bracket to the Gear Box.

**PAGE INTENTIONALLY LEFT BLANK**

# **“CBB” Blending Assembly and Related Parts**

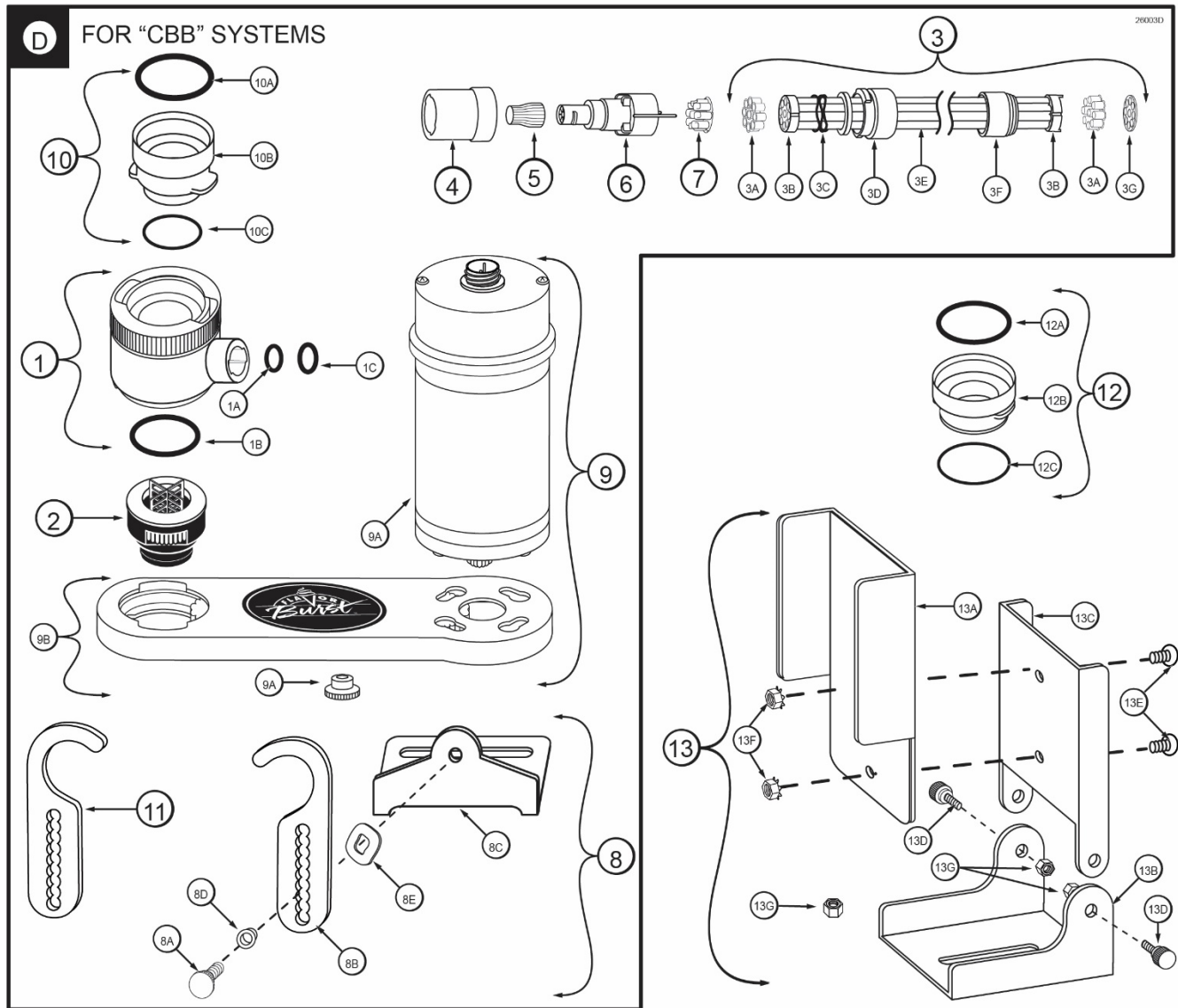


Figure 3D

**“FCB” Door Spout Assembly and Related Parts (See Figure 3E)**

ITEM	PART NO.	DESCRIPTION	QTY.	FUNCTION
<b>E</b>	ADPT TY80S-FCB	MODIFIED FCB FREEZER SPOUT ASSEMBLY	1* 0**	<b>FOR “FBC” SYSTEMS:</b> Dispenses product blended with syrups. *1 for 80FCB systems. **0 for 80SS, 80BEV, 80BLD, 80CBB systems.
1	FCB 112	MODIFIED DOOR SPOUT ASSEMBLY	1	Dispenses product mixed with flavorings.
1A	RUB 652-RSS	SMALLER SYRUP PORT O-RING	1 ea.	Provides a sealed cavity inside the syrup port.
1B	RUB 660	LARGER SYRUP PORT O-RING	1 ea.	Provides a sealed cavity inside the syrup port.
2	ELE 530	SPIGOT SWITCH ASSEMBLY KIT	1	Activates the syrup pumps.
2A	FAS 2042	4/40 LOCK NUT	1 ea.	Secures the screw to the magnetic actuator.
2B	MIS 3180	MAGNETIC ACTUATOR	1 ea.	Activates the Spigot Switch.
2C	FAS 2140	440 x 5/8 PHILLIPS P.H. SS SCREW	1 ea.	Secures the magnetic actuator to the FCB door handle.
3	FCB 121	FLOW RATE CONTROLLER	1	Regulates the rate at which product is dispensed.
3A	FAS 2134	8-32 x 1 ½” M/SCREW P.H. SS	1 ea.	Adjusts to shorten and lengthen the assembly to allow more or less product dispensed.
3B	FCB 115	8-32 X 1” PLAS STAND OFF	1 ea.	Connects the two screws of the assembly.
3C	FAS 2024	8-32 X ¼” M/SCREW P.H. SS	1 ea.	Remains as a stationary screw.
4	SYR 932FCB	6’ 9-TUBE ASSEMBLY - FCB	1	Supplies syrup to the draw spout from the pumps.
4A	FAS 2051	ROLLED FLANGE EYELET	18 ea.	Provides tension in syrup line to affix to line coupler.
4B	ROT 510	LINE COUPLER	2 ea.	Holds flavor lines in place.
4C	RUB 610	BAG CONNECTOR O-RING	1 ea.	Provides extra tension between tube connectors.
4D	ROT 515-B	9-TUBE ASSEMBLY WAVE SPRING	1 ea.	Provides tension between tube connectors.
4E	INJ 116	LINE COUPLER NUT – BLACK	1 ea.	Connects flavor lines to the internal 9-Tube Assembly.
4F	SYR 901	6’ 9-TUBE ASSEMBLY TUBES	9 ea.	Brings syrup from pump to modified door spout.
4G	ROT 511	LINE COUPLER NUT	1 ea.	Connects the flavor lines to the internal 9- Tube Assembly.
4H	RUB 602	9-POS TUBE CONNECTOR GASKET	1 ea.	Provides a sealed cavity.
5	INJ 117	TUBE CONNECTOR BODY-BLACK	1	Secures flavor line manifold to flavor lines.
6	MIS 3142	FLAVOR LINE DUST CAP- FB 80	1	Covers syrup manifold when not connected.
7	INJ 201A	SYRUP MANIFOLD	1	Connects flavor line to modified door spout.
8	RUB 601	9-POS DUCKBILLE CHECK VALVE	1	Provides sealed cavity and prevents syrup leakage.

“FCB” Door Spout Assembly and Related Parts

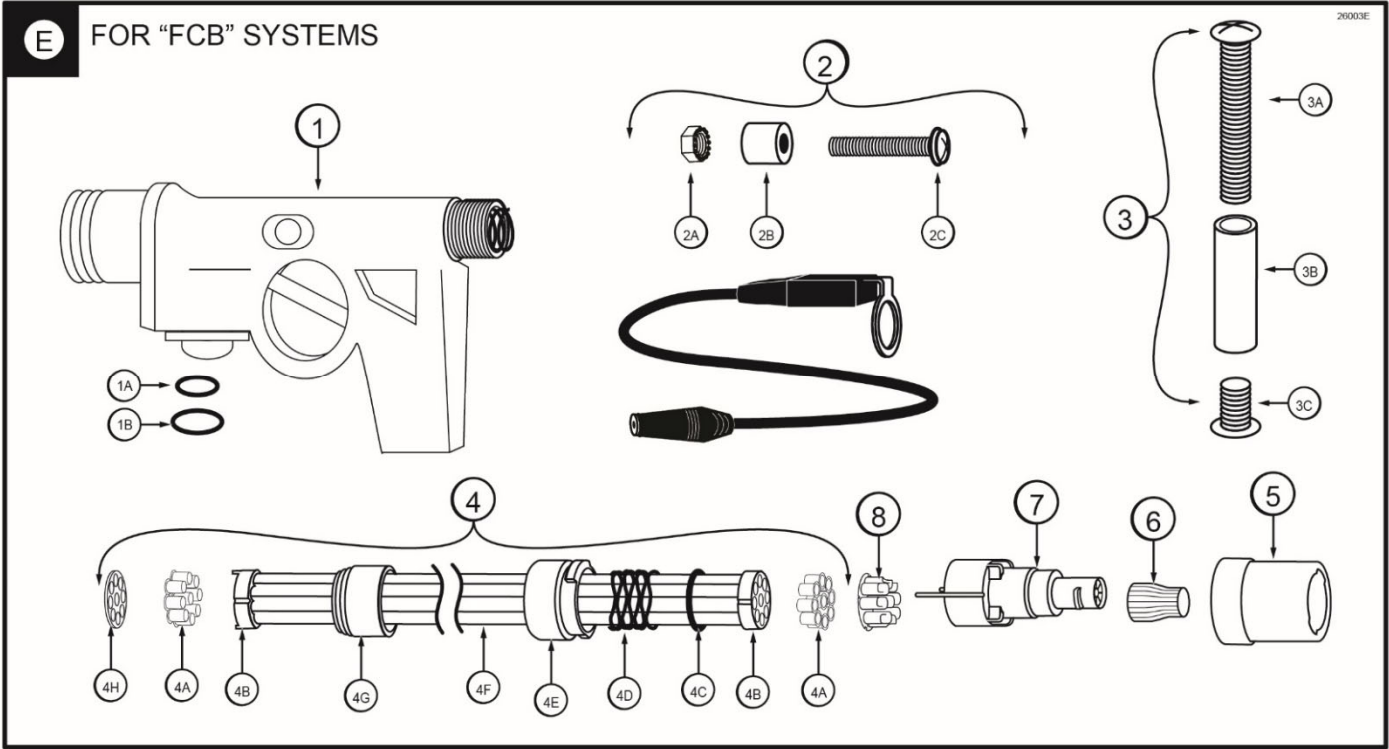


Figure 3E

## Soft Serve Syrup Pump and Related Parts (See Figure 4A)

ITEM	PART NO.	DESCRIPTION	QTY.	FUNCTION
<b>A</b>	N/A	SOFT SERVE SYRUP PUMP SYSTEM	8* 0**	<b>FOR “SS”, “BLD” SYSTEMS:</b> Pumps syrup from bags into flavor lines. *8 for 80SS, 80BLD systems. **0 for 80BEV, 80CBB, 80FCB systems.
1	N/A	SOFT SERVE SYRUP PUMP	1 ea.	Pumps syrup from bags to flavor lines.
1A	SYR 307	PERISTALTIC SYRUP PUMP – SOFT SERVE	1 ea.	Pumps syrup from bags to flavor lines.
1B	TUB 806	1/8" SYRUP PUMP REPL TUBE	1 ea.	Transports syrup through pump.
1C	FAS 2067	SYRUP PUMP TUBE WASHER-1/4	1 ea.	Secures pump tube.
1D	FAS 2066	SYRUP PUMP CLAMP-HOSE-1/4"	1 ea.	Prevents pump tube from slipping.
1E	FAS 2051	ROLLED FLANGE EYELET	1 ea.	Creates tension for tighter fit.
1F	FIX 1036	1/4" TO 1/4" OD UNION ELBOW	1 ea.	Connects syrup in tube to pump.
1G	FIX 1035	1/4 TO 3/16 OD REDUCING UNION	1 ea.	Connects syrup pump to flavor line out.
2	SYR 945	SYRUP TUBE ASSEMBLY – SOFT SERVE	1 ea.	Transports flavor from bag to pump.
2A	FIX 1054	1/4" ID HOSE BARB SHUTOFF	1 ea.	Connects flavor line to flavor bag.
2B	SYR 902	FLAVOR-IN TUBE	1 ea.	Carries syrup from syrup bag to pump.
2C	TUB 811	TUBE-SILICONE .188X.375 PE FB80	1 ea.	Connects barb fitment to tube port.
2D	FIX 1048	FITTING-1/4X1/4 BARB FB80	1 ea.	Connects syrup tube to silicone tube.
3	ELE 932INT-2S	PUMP & SANITIZER CABLE HARNESS – INT-2S	1	Provides power to the syrup and sanitizer pumps.

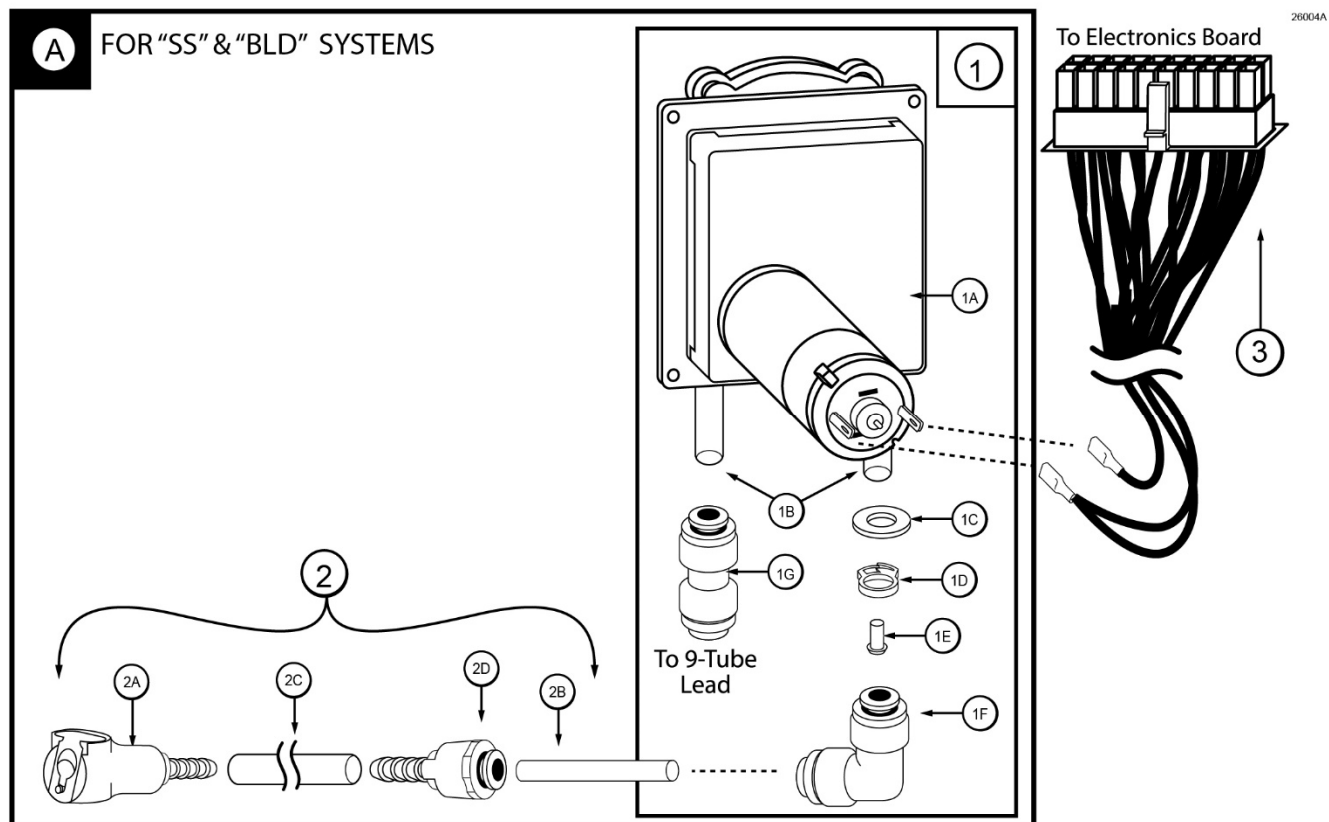


Figure 4A



## Beverage Syrup Pump and Related Parts (See Figure 4B)

ITEM	PART NO.	DESCRIPTION	QTY.	FUNCTION
<b>B</b>	N/A	BEVERAGE SYRUP PUMP SYSTEM	8* 0**	<b>FOR "BEV" &amp; "FCB" SYSTEMS:</b> Pumps syrup from flavor bags to flavor lines. *8 for 80BEV and 80FCB systems. **0 for 80SS, 80BLD, 80CBB systems
1	N/A	BEVERAGE SYRUP PUMP	1 ea.	Pumps syrup from bags to flavor lines.
1A	SYR 926	PERISTALTIC SYRUP PUMP - BEVERAGE	1 ea.	Pumps syrup from bags into flavor lines.
1B	TUB 809	1/4" SYRUP SHAKE PUMP REPLACEMENT TUBE	1 ea.	Transports syrup through pump.
1C	FIX 1045	1/4" TUBE TO 1/4" HOSE STEM	1 ea.	Creates tension for tighter fit, connects pump to fitment.
1D	FIX 1035	1/4 TO 3/16 OD REDUCING UNION	1 ea.	Connects syrup pump to flavor line out.
1E	FIX 1036	1/4" TO 1/4" OD UNION ELBOW	1 ea.	Connects bag connector assembly to flavor line/pump.
2	SYR 945SH	SYRUP TUBE ASSEMBLY – SHAKE BAG COUPLER	1 ea.	Transports the flavoring from the syrup bag to the syrup pump.
2A	SYR 928	#27-1102-99 .265" BAG COUPLER	1 ea.	Fastens bag fitment to bag connector.
2B	TUB 811	TUBE-SILICONE .188X.375 PE FB80	1 ea.	Provides sealed cavity inside bag fitment.
2C	FIX 1048	FITTING 1/4 X 1/4 BARB FB80	1 ea.	Connects bag coupler assembly to flavor line/pump.
2D	SYR 902	FLAVOR-IN TUBE	1 ea.	Carries syrup from syrup bag to pump.
3	ELE 932INT-2S	PUMP & SANITIZER CABLE HARNESS – INT-2S	1	Provides power to the syrup and sanitizer pumps.

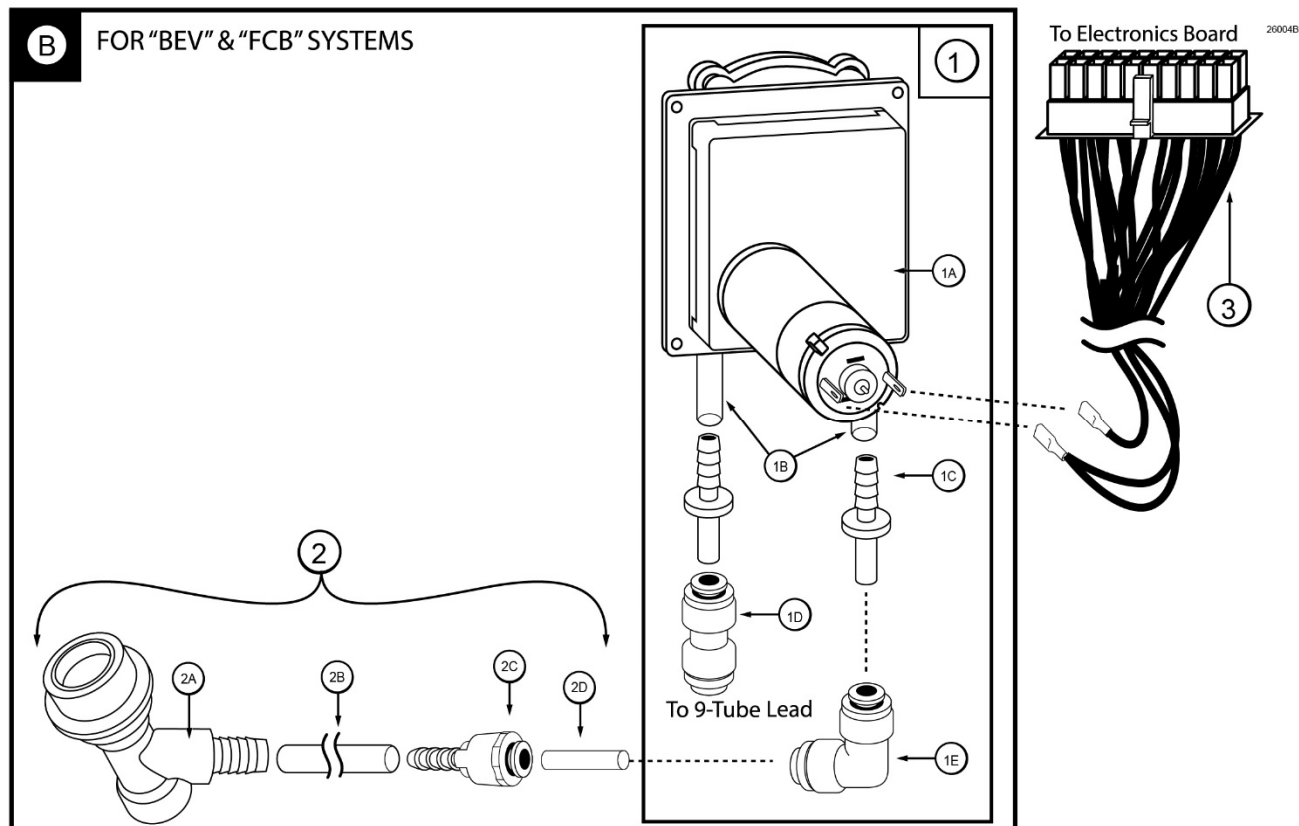


Figure 4B

**Premium Beverage Syrup Pump and Related Parts (See Figure 4C)**

ITEM	PART NO.	DESCRIPTION	QTY.	FUNCTION
<b>C</b>	N/A	PREMIUM BEVERAGE SYRUP PUMP SYSTEM	8* 0**	<b>FOR “CBB” SYSTEMS:</b> Pumps syrup from bags into flavor lines. *8 for 80CBB systems. **0 for 80BEV, 80SS, 80BLD, 80FCB systems.
1	N/A	PREMIUM BEVERAGE SYRUP PUMP	1 ea.	Pumps syrup from bags to flavor lines.
1A	SYR 926P	PERISTALTIC SYRUP PUMP – PREMIUM BEVERAGE	1 ea.	Pumps syrup from bags to flavor lines.
1B	TUB 806	1/8” SYRUP PUMP REPL TUBE	1 ea.	Transports syrup through pump.
1C	FAS 2067	SYRUP PUMP TUBE WASHER-1/4	1 ea.	Secures pump tube.
1D	FAS 2066	SYRUP PUMP CLAMP-HOSE-1/4"	1 ea.	Prevents pump tube from slipping.
1E	FAS 2051	ROLLED FLANGE EYELET	1 ea.	Creates tension for tighter fit.
1F	FIX 1036	1/4" TO 1/4" OD UNION ELBOW	1 ea.	Connects syrup in tube to pump.
1G	FIX 1035	1/4 TO 3/16 OD REDUCING UNION	1 ea.	Connects syrup pump to flavor line out.
2	SYR 945	SYRUP TUBE ASSEMBLY – SOFT SERVE	1 ea.	Transports flavor from bag to pump.
2A	FIX 1054	1/4” ID HOSE BARB SHUTOFF	1 ea.	Connects flavor line to flavor bag.
2B	SYR 902	FLAVOR-IN TUBE	1 ea.	Carries syrup from syrup bag to pump.
2C	TUB 811	TUBE-SILICONE .188X.375 PE FB80	1 ea.	Connects barb fitment to tube port.
2D	FIX 1048	FITTING-1/4X1/4 BARB FB80	1 ea.	Connects syrup tube to silicone tube.
3	ELE 932INT-2S	PUMP & SANITIZER CABLE HARNESS – INT-2S	1	Provides power to the syrup and sanitizer pumps.

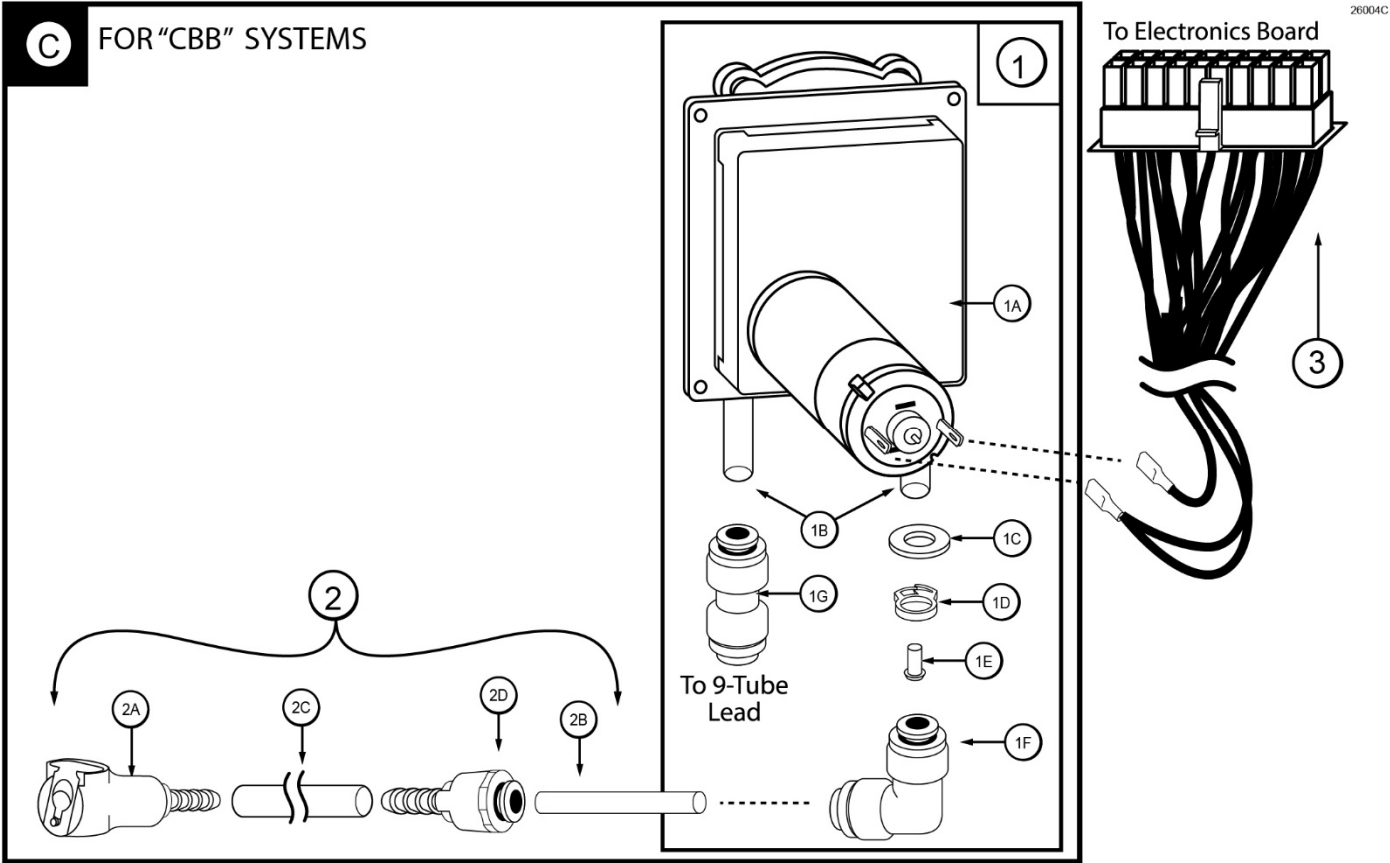


Figure 4C

### Sanitizer Pump and Related Parts (See Figure 5)

ITEM	PART NO.	DESCRIPTION	QTY.	FUNCTION
1-1	MIS 3028-80M-2S	SANITIZER FLUSH TUBE ASSEMBLY – SOFT SERVE INT	1* 0**	<b>FOR “SS”, “BLD”, “CBB” SYSTEMS:</b> Flushes flavor lines with sanitizer when attached. *1 for 80SS, 80BLD, 80CBB systems. **0 for 80BEV, 80FCB systems.
1A	FIX 1051	SANITIZER TANK FITMENT	2 ea.	Connects flush tube to sanitizer tank and syrup line connectors.
1B	SYR 931	CLEAR TUBING	3 ea.	Transports sanitizer to sanitizer / flush tubes.
1C	FIX 1046	FLUSH TUBE " Y " CONNECTOR	1 ea.	Splits sanitizer flush tube into two tubes.
OR...				
1-2	MIS 3028-80M-SH-2S	SANITIZER FLUSH TUBE ASSEMBLY – FROZEN BEVERAGE INT	1* 0**	<b>FOR “BEV” SYSTEMS:</b> Flushes flavor lines with sanitizer when attached. *1 for 80BEV systems. **0 for 80SS, 80BLD, 80CBB, 80FCB systems.
N/A	N/A	SANITIZER FLUSH TUBE ASSEMBLY – BEVERAGE	1 ea.	Connects flush tube to beverage syrup lines.
1A	FIX 1051	SANITIZER TANK FITMENT	1 ea.	Connects flush tube to sanitizer tank.
1B	SYR 931	CLEAR TUBING	3 ea.	Transports sanitizer to sanitizer / flush tubes.
1C	FIX 1046	FLUSH TUBE " Y " CONNECTOR	1 ea.	Splits sanitizer flush tube into two tubes.
OR...				
1-3	MIS 3028S-X	PUMP FLUSH ADAPTER EXTENSION	1* 0**	<b>FOR “FCB” SYSTEMS:</b> Flushes flavor lines with sanitizer when attached. *1 for 80FCB systems. **0 for 80SS, 80BLD, 80BEV, 80CBB systems.
N/A	N/A	SANITIZER FLUSH TUBE ASSEMBLY – BEVERAGE	1 ea.	Connects flush tube to beverage syrup lines.
1A	FIX 1051	SANITIZER TANK FITMENT	1 ea.	Connects flush tube to sanitizer tank.
2	TUB 807	SANITIZER TUBE REPLACEMENT	1	Transports sanitizer through pump.
3	SAN 748	SANITIZER PUMP ASSEMBLY	1	Supplies sanitizer to flush tube.
4	ELE 932INT-2S	PUMP & SANITIZER CABLE HARNESS – INT-2S	1	Provides power to the syrup and sanitizer pumps.
5	FIX 1035	1/4 TO 3/16 OD REDUCING UNION	1	Connects pump to the 9-Tube Assembly.
6	FIX 1045	1/4" TUBE TO 1/4" HOSE STEM	3* 2**	Creates tension for tighter fit. *3 for 80SS,80BLD, 80BEV, 80BB systems **2 for 80FCB systems.
7	FIX 1036	UNION-ELBOW-1/4X1/4OD FB80	1* 0**	<b>FOR “SS”, “BLD”, “BEV”, “CBB” SYSTEMS:</b> Connects sanitizer line to barb fitment. *1 for 80SS,80BLD, 80BEV, 80BB systems **0 for 80FCB systems.
8	SYR 900	4' 9-TUBE ASSEMBLY TUBES	1	Transports sanitizer from the tank the pump.
9	SYR 931	CLEAR TUBING	2* 0**	<b>FOR “SS”, “BLD”, “BEV”, “CBB” SYSTEMS:</b> Transports sanitizer to sanitizer / flush tubes. *2 for 80SS,80BLD, 80BEV, 80BB systems **0 for 80FCB systems.

### Sanitizer Pump and Related Parts (Continued)

ITEM	PART NO.	DESCRIPTION	QTY.	FUNCTION
10	FIX 1046	FLUSH TUBE " Y " CONNECTOR	1* 0**	FOR "SS", "BLD", "BEV", "CBB" SYSTEMS: Splits sanitizer flush tube into two tubes. *1 for 80SS,80BLD, 80BEV, 80BB systems **0 for 80FCB systems.
11	FIX 1051	SANITIZER TANK FITMENT	1 0*	Connects flush tube to flush tube connector. *0 for 80FCB systems.

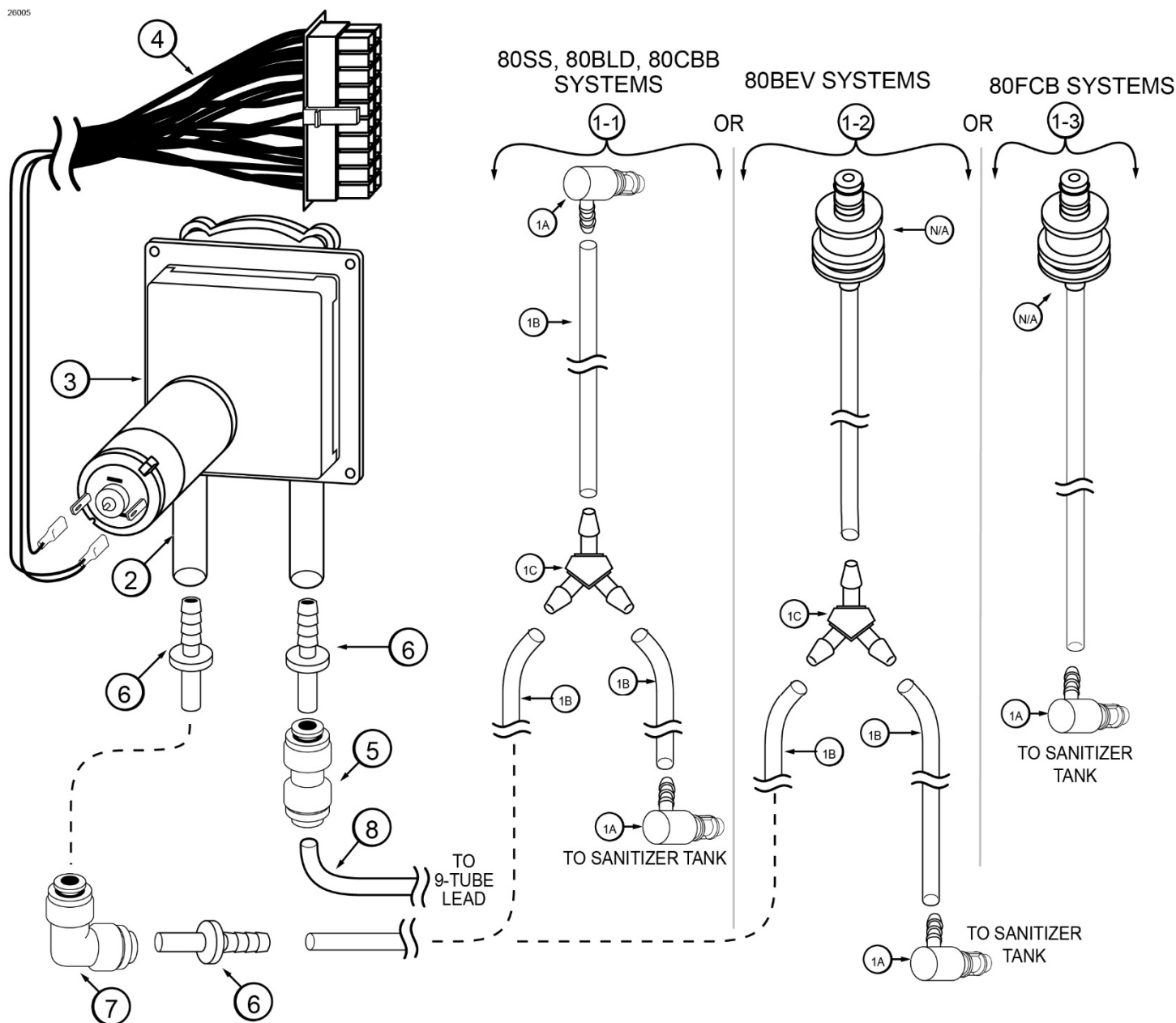


Figure 5

**Syrup Tray, Sanitizer Tank, 9-Tube Assembly Lead, and Casing (See Figure 6)**

ITEM	PART NO.	DESCRIPTION	QTY.	FUNCTION
1	SYR 927	INTERNAL 9-TUBE ASSEMBLY	1	Transports syrup from bags to the 9-Tube Assembly.
1A	SYR 900	4' 9-TUBE ASSEMBLY TUBES	9 ea.	Transports syrup and sanitizer from pumps to Injector Assembly.
1B	ROT 511	LINE COUPLER NUT	1 ea.	Connects flavor lines to the internal 9-Tube Assembly.
1C	ROT 512	TUBE CONNECTOR BODY	1 ea.	Connects internal 9-Tube Assembly to flavor lines.
1D	ROT 510	LINE COUPLER	1 ea.	Holds flavor lines in place.
1E	FAS 2051	ROLLED FLANGE EYELET	9 ea.	Creates tension for tighter fit 1 per pump, 9 per tube assembly.
1F	MIS 3023	DUST CAP	1 ea.	Cover to protect end of flavor lines.
2	CAB 113	FLAVORING TRAY	8	Houses syrup bags.
3	SAN 756	SANITIZER TANK ASSEMBLY	1	Houses sanitizer cleaning solution.
3A	SAN 749	THREADED CHECK VALVE	1 ea.	Allows air to fill Sanitizer Tank.
3B	SAN 750	SANITIZER TANK DOME NUTS	1 ea.	Mounts check valve to Sanitizer Tank.
3C	FIX 1052	SANITIZER TANK QUICK CONNECT	1 ea.	Connects sanitizer lines to Sanitizer Tank.
3D	SAN 755	SANITIZER TANK CAP	1 ea.	Allows Sanitizer Tank to be refilled.
3E	SAN 754	SANITIZER CAP O-RING	1 ea.	Seals the Sanitizer Tank opening to prevent leakage.
3F	SYR 931	CLEAR TUBING	1 ea.	Transports sanitizer to flush tubes.
3G	SAN 751	SANITIZER TANK	1 ea.	Houses sanitizer cleaning solution.
3H	RUB 604	SANITIZER TANK O-RING	4 ea.	Seals sanitizer tank's quick connect & check valve openings.
4	MIS 3196	STAINLESS 9-TUBE CASING ASSEMBLY	1	Protects and holds the cables and tubes in place on the freezer side panel.
4A	N/A	STAINLESS 9-TUBE CASING HINGED CHANNEL	1 ea.	Covers and protects the cables and tubes of the Casing Assembly.
4B	MIS 3051	CH-6 CHANNEL MAGNET ASSEMBLY	2 ea.	Holds the Casing Channel to freezer panel.
4C	FAS 2040	6-32 x 1/4 PAN HEAD SCREW	1 ea.	Secures cover to mounting brackets.
4D	FAS 2024	8-32 x 1/4 PAN HEAD SCREW	4 ea.	Secures magnet assembly to brackets.
4E	FAS 2035	8-32 NUTS – EXT. LOCK WASHER	4 ea.	Secures magnet assembly to brackets.

# Syrup Tray, Sanitizer Tank, 9-Tube Assembly Lead, and Casing

20008

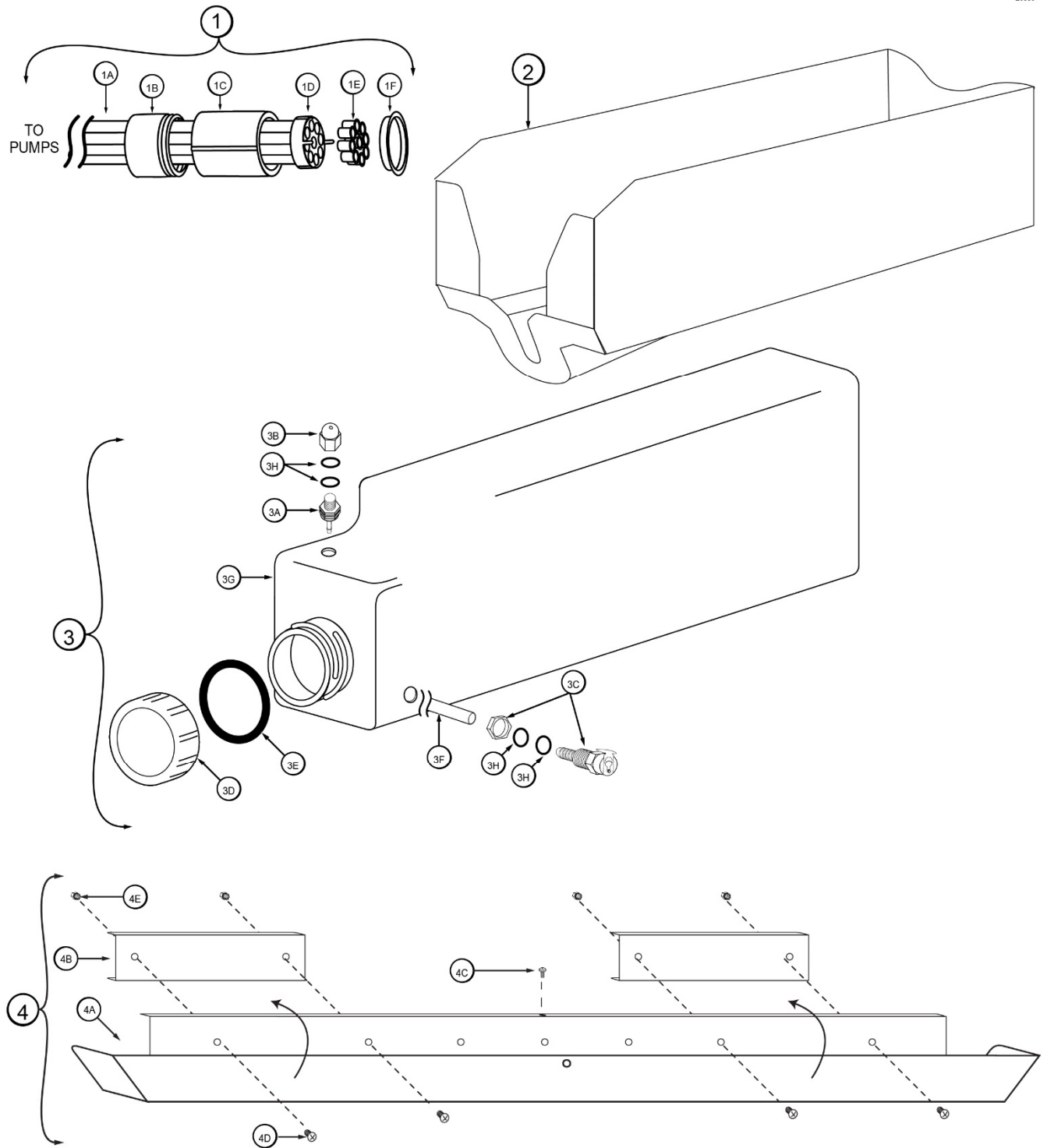


Figure 6

## Electronic Parts and Connections (See Figure 7)

ITEM	PART NO.	DESCRIPTION	QTY.	FUNCTION
1	ELE 905	FLAVOR 10 COLOR TOUCH PANEL	1	Control system for the unit.
2	MIS 3214	TOUCH PANEL MOUNTING BRACKET ASSEMBLY	1* 0**	<b>FOR “SS” &amp; “BLD” SYSTEMS:</b> Secures the Touch Panel to the freezer. *1 for 80SS & 80BLD systems. **0 for 80BEV & 80FCB systems.
2A	MIS 3214A	TOUCH PANEL MOUNTING PLATE	1 ea.	Attaches Touch Panel to the anchor bracket.
2B	MIS 3214B	MOUNTING ANCHOR BRACKET	1 ea.	Allows the bracket to be angled up or down.
2C	MIS 3214C	MOUNTING BASE PLATE	1 ea.	Creates mounting base for bracket assembly.
2D	FAS 2170	M4 X 8 PHILLIPS SCREW	4 ea.	Secures mounting plate to the Touch Panel.
2E	FAS 2174	1/4 - 20 NYLON LOCK NUT S.S.	2 ea.	Secures the anchor bracket in a fixed position.
2F	MIS 3076	ADHESIVE PAD	1 ea.	Secures the mounting bracket to the freezer.
2G	FAS 2172	1/4-20 X 1/2 HEX BOLT	2 ea.	Hinges Touch Panel plate and anchor bracket.
2H	FAS 2023	MOUNTING BRACKET KNOB	4 ea.	Secures anchor bracket to the base plate.
2I	FAS 2171	M4 LOCK WASHER	4 ea.	Secures connection between screw and plate.
2J	FAS 2173	FLAT WASHER 18-8 S.S.	2 ea.	Secures the connection between bolt and nut.
3	MIS 3220	TOUCH PANEL SIDE MOUNTING BRACKET ASSEMBLY	1* 0**	<b>FOR “BEV” &amp; “FCB” SYSTEMS:</b> Secures the Touch Panel to the freezer. *1 for 80BEV & 80FCB systems. **0 for 80SS & 80BLD systems.
3A	MIS 3220A	TOUCH PANEL MOUNTING PLATE	1 ea.	Attaches Touch Panel to anchor bracket.
3B	MIS 3220B	MOUNTING ANCHOR BRACKET	1 ea.	Allows the bracket to be angled up or down.
3C	MIS 3220C	MOUNTING BASE PLATE	1 ea.	Creates mounting base for bracket assembly.
3D	FAS 2170	M4 X 8 PHILLIPS SCREW	4 ea.	Secures mounting plate to the Touch Panel.
3E	FAS 2022	1/2" SELF-DRILL SCREW	4 ea.	Secures the anchor bracket in a fixed position.
3F	FAS 2177	10-32 LOCK NUT	5 ea.	Secures the mounting bracket to the freezer.
3G	FAS 2171	M4 LOCK WASHER	4 ea.	Hinges Touch Panel plate and anchor bracket.
3H	FAS 2178	WASHER #10	2 ea.	Secures the anchor bracket to the base plate.
3I	FAS 2058	LOCK WASHER	2 ea.	Secures connection between screw and plate.
4	CAB 301	CABINET ELECTRONICS PANEL	1	Secures the Electronics Board and its connections within the cabinet assembly.
5	CAB 358A	INT ACCESSORIES MOUNTING PLATE	1	Mounts various electronic connecting cables and power entrance module.
6	MIS 3188	CABINET UNIT OPEN CLOSE BUSHING	1	Protects the cables and tubes.
7	FAS 2014	8-32 X 1/2" PAN HEAD	10	Secures various parts within the electronics box.
8	MIS 3187	CABINET UNIT HOLE CAP PLUG	1	Covers the unused hole on the Taylor Panel.
9	ELE 434	POWER CABLE	1	Powers the electronics board.
10	ELE 485CTP	120V POWER ENTRANCE MODULE	1	Provides a power connection to the outside of the cabinet.
11	ELE 932	PUMP & SANITIZER CABLE HARNESS – CTP DLX	1	Provides power to the syrup and sanitizer pumps.



## Electronic Parts and Connections (Continued)

ITEM	PART NO.	DESCRIPTION	QTY.	FUNCTION
12	ELE 933	POWER SUPPLY JUMPER CABLE	1	Connects the power supply to the electronics board.
13	ELE 931	EXTERNAL ROTOR CABLE	1* 0**	<b>FOR “SS”, “BLD” &amp; “BEV” SYSTEMS:</b> Connects the external rotor cable to the electronics board. *1 for 80SS, 80BEV, & 80BLD systems. **0 for 80FCB systems
14-1	INJ 330TS	INJECTOR MOTOR ASSEMBLY	1* 0**	<b>FOR “SS” &amp; “BEV” SYSTEMS:</b> Turns assembly gears to spin product in the Injector Head. *1 for 80SS & 80BEV systems. **0 for 80FCB, 80BLD, & 80CBB systems.
	OR...			
14-2	INJ 330HSB	HIGH SPEED BLENDING MOTOR ASSEMBLY	1* 0**	<b>FOR “BLD” &amp; “CBB” SYSTEMS:</b> Turns assembly gears to spin product in the Injector Head. *1 for 80BLD & 80CBB systems. **0 for 80FCB, 80SS, 80BEV systems.
	OR...			
14-3	ELE 530	FCB SPIGOT SWITCH ASSEMBLY KIT	1* 0**	<b>FOR “FCB” SYSTEMS:</b> Activates the syrup pumps when draw handle is activated. *1 for 80FCB systems. **0 for 80SS, 80BLD, 80BEV, 80CBB systems.
15	ELE 911	ELECTRONICS BOARD	1	Provides power to the system.
16	ELE 525M	MALE TO MALE 48" SWITCH EXTENSION	1	Connects Touch Panel to the freezer switch.
17	FAS 2035	8-32 NUTS - EXT. LOCK WASHER	5	Secures various parts to 8-32 screws.
18	FAS 2071	THUMB SCREWS	6	Secures the Electronics Panel to the back of the unit
19	ELE 930	INTERNAL ROTOR CABLE	1* 0**	<b>FOR “SS”, “BLD” &amp; “BEV” SYSTEMS:</b> Connects the external rotor cable to the electronics board. *1 for 80SS, 80BEV, & 80BLD systems. **0 for 80FCB systems
20	ELE 926	RJ45 ETHERNET CABLE - INTERNAL	1	Connects the Ethernet cable to the electronics board.
21	MIS 3216	CLOSURE PLUG 5/8 INCH	2* 3**	Closes up extra opening in the base panel. *2 for 80SS, 80BEV, & 80BLD systems. **3 for 80FCB systems
22	ELE 925	RJ45 ETHERNET CABLE - EXTERNAL	1	Connects the Touch Panel to the cabinet.
23	ELE 927	RJ45 ETHERNET CABLE GLAND	1	Secures the Ethernet cable to cabinet.
24	MIS 3026S	TOUCH PANEL CABLE CASING	1	Conceals and protects the Touch Panel cable, as well as attaches it to the freezer.
25	MIS 3069	OPEN/CLOSED BUSHING	1	Strain relief for sanitizer tube.
26	MIS 3166	CLOSURE PLUG	1	Closes up unused opening.

\*The Integrated 2S systems are compatible with the Taylor C206000-WFB mobile cart and the C20600-WKN short mobile cart. These carts include modified front and rear panels required for the installation of the Integrated-2S systems. If you have a C206 cart that does not have modified front and rear panels, contact your local Taylor distributor.

**PAGE INTENTIONALLY LEFT BLANK**

## Electronic Parts and Connections

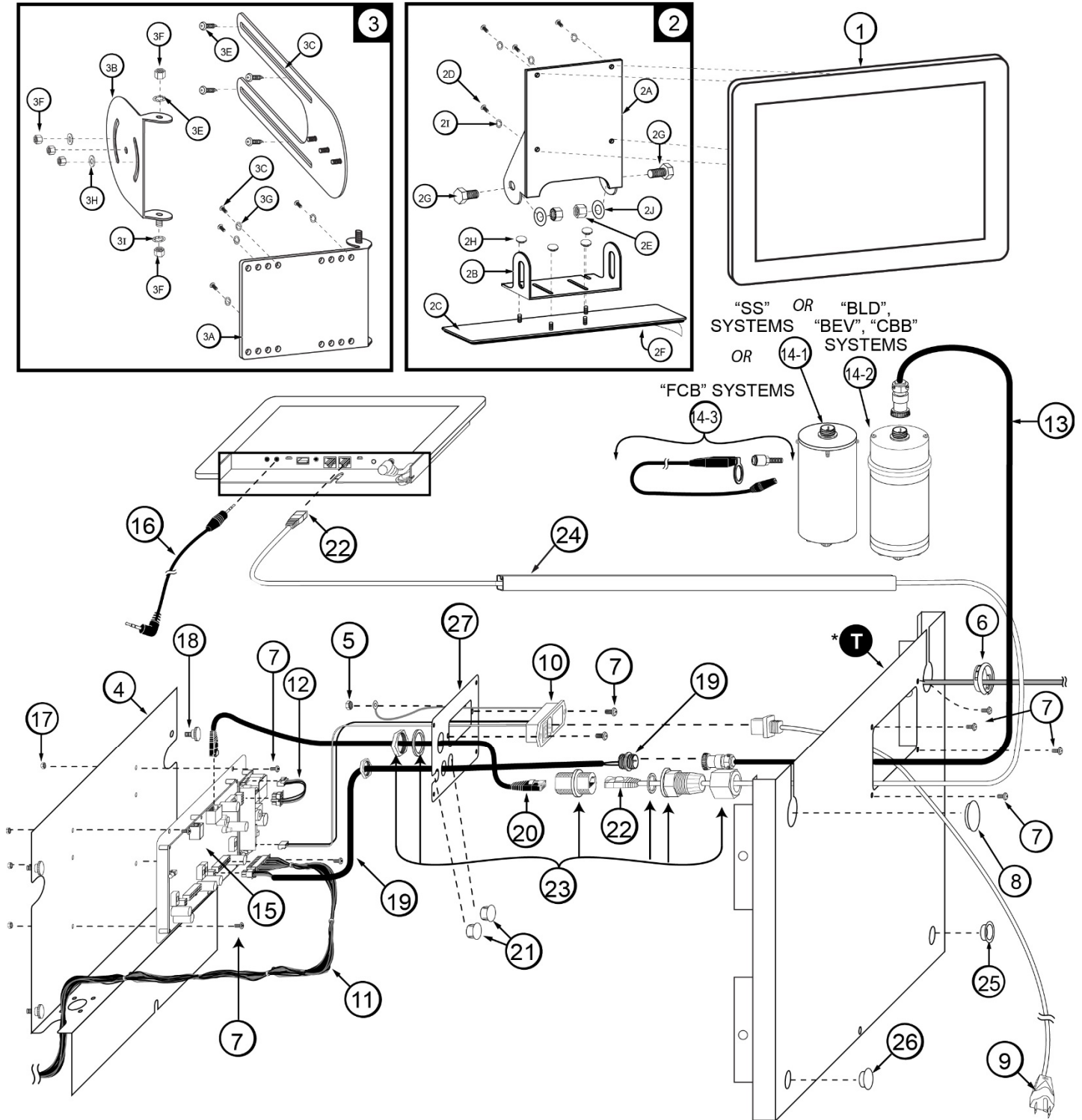


Figure 7

**“SS” Spare Parts Kit (See Figure 8A)**

ITEM	PART NO.	DESCRIPTION	QTY.	FUNCTION
<b>A</b>	SPR 5800A	SPARE PARTS KIT – SOFT SERVE	1	<b>FOR “SS” SYSTEMS:</b> Houses extra spare parts and wear items.
1	INJ 321	GEAR CARTRIDGE	1	Rotates product for even syrup distribution.
2	ELE 430-RE-1	SPIGOT SWITCH	1	Activates Blending Assembly.
3	RUB 601	9-POS DUCKBILL CHECK VALVE	1	Provides sealed cavity and prevents leakage.
4	RUB 602	9-POS TUBE CONN. GASKET	1	Provides sealed cavity.
5	RUB 642	UPPER ADAPTER O-RING FOR ADPT 101A ADAPTER	1	Creates tension to secure adapter to freezer door.
6	RUB 640	FLAT ADAPTER GASKET FOR ADPT 101A ADAPTER	1	Provides sealed cavity inside adapter.
7	RUB 632	LOWER ADAPTER O-RING	1	Helps secure the adapter to Injector Head.
8	RUB 652-RSS	SMALLER SYRUP PORT O-RING	1	Provides sealed cavity inside syrup port.
9	RUB 660	LARGER SYRUP PORT O-RING	1	Provides sealed cavity inside syrup port.
10	RUB 651	BLENDING HEAD O-RING 2-020	1	Provides a sealed cavity.
11	INJ 201A	SYRUP MANIFOLD - BLACK	1	Connects flavor line to Injector Head.
12	INJ 117	TUBE CONNECTOR BODY -BLACK	1	Secures syrup line manifold to flavor lines.
13	RUB 608	ALTERNATE UPPER ADAPTER O-RING FOR ADPT 101A ADAPTER	1	Creates tension to secure adapter to freezer door.
14	ELE 444	1 AMP, 1 1/4" SLOW BLOW FUSE	2	System overload protection.
15	CW 137	DRIVE MOTOR GEAR	1	Turns Gear Box gears, powered by Drive Motor.
16	RUB 659	UPPER ADAPTER O-RING FOR ADPT 8750-A ADAPTER	1	Creates tension to secure adapter to freezer door.

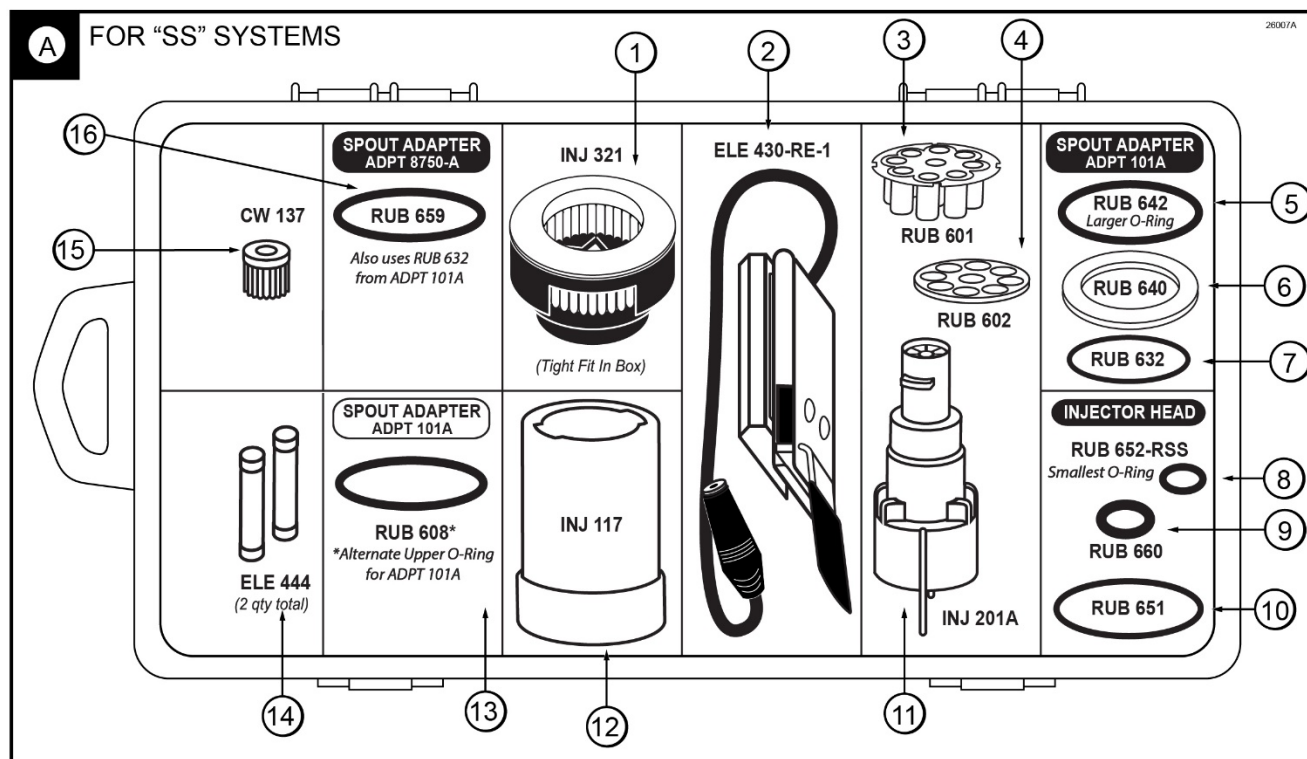


Figure 8A

**“BLD” Spare Parts Kit (See Figure 8B)**

ITEM	PART NO.	DESCRIPTION	QTY.	FUNCTION
<b>B</b>	SPR 5800BLD	SPARE PARTS KIT – SOFT SERVE BLEND	1	<b>FOR “BLD” SYSTEMS:</b> Houses extra spare parts and wear items.
1	INJ 321C	GEAR CARTRIDGE	1	Rotates product for even syrup distribution.
2	ELE 430-RE-1	SPIGOT SWITCH	1	Activates Blending Assembly.
3	RUB 601	9-POS DUCKBILL CHECK VALVE	1	Provides sealed cavity and prevents leakage.
4	RUB 602	9-POS TUBE CONN. GASKET	1	Provides sealed cavity.
5	RUB 642	UPPER ADAPTER O-RING FOR ADPT 101A ADAPTER	1	Creates tension to secure adapter to freezer door.
6	RUB 640	FLAT ADAPTER GASKET FOR ADPT 101A ADAPTER	1	Provides sealed cavity inside adapter.
7	RUB 632	LOWER ADAPTER O-RING	1	Helps secure the adapter to Blending Head.
8	RUB 652-RSS	SMALLER SYRUP PORT O-RING	1	Provides sealed cavity inside syrup port.
9	RUB 660	LARGER SYRUP PORT O-RING	1	Provides sealed cavity inside syrup port.
10	RUB 651	BLENDING HEAD O-RING 2-020	1	Provides a sealed cavity.
11	INJ 201A	SYRUP MANIFOLD - BLACK	1	Connects flavor line to Blending Head.
12	INJ 117	TUBE CONNECTOR BODY -BLACK	1	Secures syrup line manifold to flavor lines.
13	RUB 608	ALTERNATE UPPER ADAPTER O-RING FOR ADPT 101A ADAPTER	1	Creates tension to secure adapter to freezer door.
14	ELE 444	1 AMP, 1 1/4" SLOW BLOW FUSE	2	System overload protection.
15	CW 137	DRIVE MOTOR GEAR	1	Turns Gear Box gears, powered by Drive Motor.
16	RUB 659	UPPER ADAPTER O-RING FOR ADPT 8750-A ADAPTER	1	Creates tension to secure adapter to freezer door.

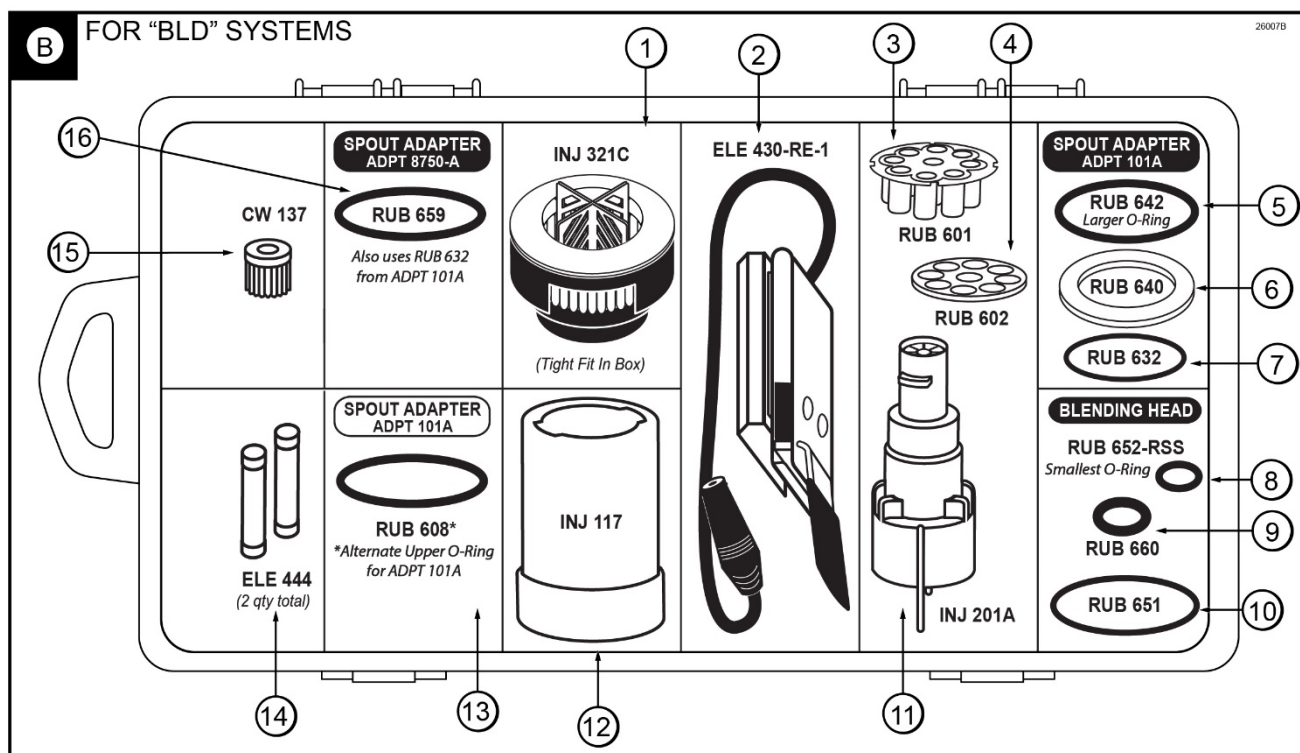


Figure 8B

**“BEV” Spare Parts Kit (See Figure 8C)**

ITEM	PART NO.	DESCRIPTION	QTY.	FUNCTION
<b>C</b>	SPR 5800BEV	SPARE PARTS KIT – BEVERAGE	1	<b>FOR “BEV” SYSTEMS:</b> Houses extra spare parts and wear items.
1	INJ 321S	GEAR CARTRIDGE ASSEMBLY – VERTICAL BEVERAGE BLENDER	1	Rotates product for even syrup distribution throughout slush product.
2	ELE 510	DRAW SWITCH ASSEMBLY	1	Activates Blending Assembly.
3	RUB 601	9-POS DUCKBILL CHECK VALVE	1	Provides sealed cavity to prevent leakage.
4	RUB 602	9-POS TUBE CONN. GASKET	1	Provides sealed cavity.
5	RUB 627	UPPER ADAPTER O-RING - FOR ADPT 104R-A	1	Secures adapter to freezer door with tension.
6	RUB 632	LOWER ADAPTER O-RING	1	Secures adapter to Blending Head with tension.
7	RUB 652-RSS	SMALLER SYRUP PORT O-RING	1	Provides sealed cavity inside syrup port.
8	RUB 660	LARGER SYRUP PORT O-RING	1	Provides sealed cavity inside syrup port.
9	RUB 651	INJECTOR HEAD O-RING 2-020	1	Provides a sealed cavity.
10	INJ 201A	SYRUP MANIFOLD	1	Connects flavor line to Blending Head.
11	INJ 117	TUBE CONNECTOR BODY -BLACK	1	Secures flavor line manifold to flavor lines.
12	ELE 444	1 AMP, 1 1/4" SLOW BLOW FUSE	2	System overload protection.
13	CW 137	DRIVE MOTOR GEAR	1	Turns the Gear Box gears, powered by the Drive Motor.

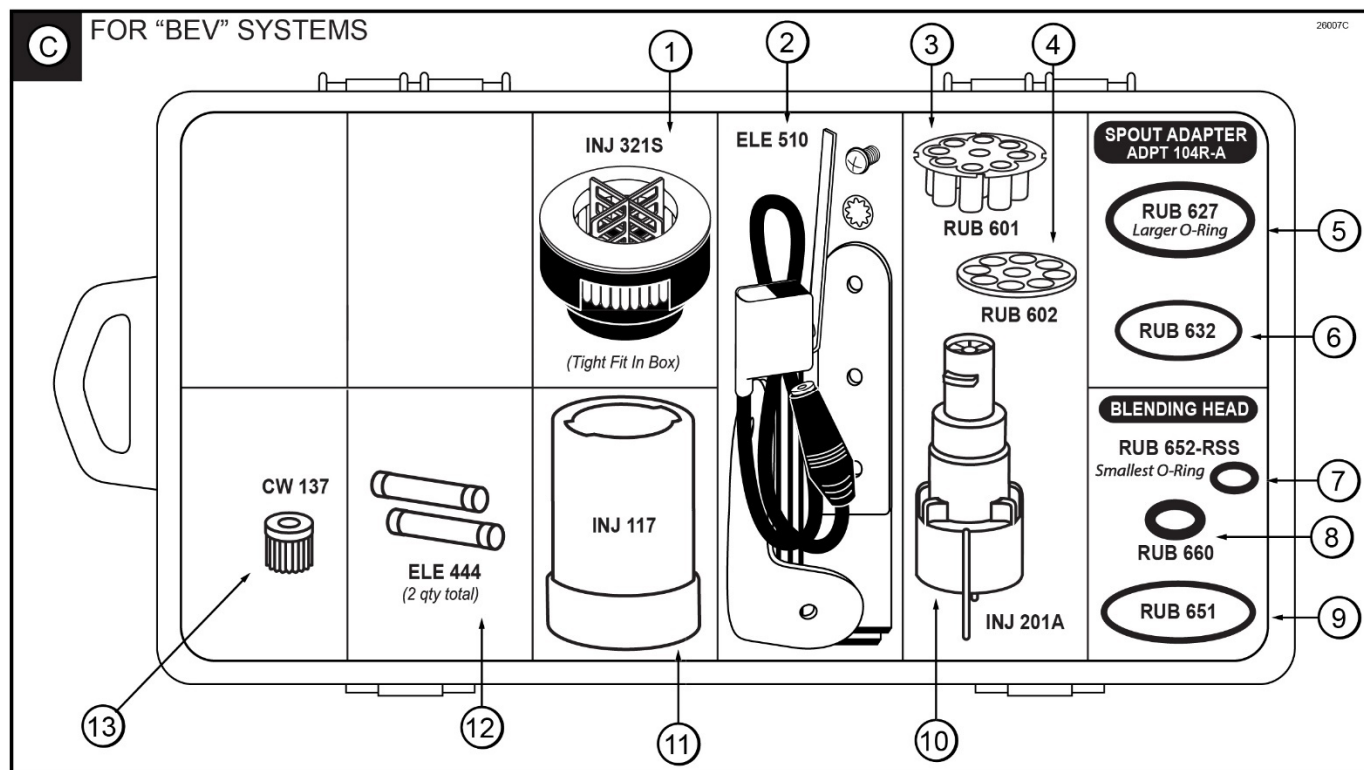


Figure 8C



**“CBB” Spare Parts Kit (See Figure 8D)**

ITEM	PART NO.	DESCRIPTION	QTY.	FUNCTION
<b>D</b>	SPR 5800P	SPARE PARTS KIT – PERMIUM BEVERAGE	1	<b>FOR “CBB” SYSTEMS:</b> Houses extra spare parts and wear items.
1	INJ 321P	GEAR CARTRIDGE ASSEMBLY – PREMIUM BLEND	1	Rotates product for even syrup distribution throughout product.
2	ELE 510	DRAW SWITCH ASSEMBLY WITH BRACKET	1	Activates Blending Assembly through frozen beverage freezer.
3	RUB 601	9-POS DUCKBILL CHECK VALVE	1	Provides sealed cavity and prevents syrup leakage.
4	RUB 602	9-POS TUBE CONN. GASKET	1	Provides sealed cavity.
5	RUB 627	UPPER ADAPTER O-RING - FOR ADPT 104R-A	1	Creates tension to secure adapter to freezer door.
6	RUB 632	LOWER ADAPTER O-RING	1	Creates tension to secure adapter to Blending Head.
7	RUB 652-RSS	SMALLER SYRUP PORT O-RING	1	Provides sealed cavity inside syrup port.
8	RUB 660	LARGER SYRUP PORT O-RING	1	Provides sealed cavity inside syrup port.
9	RUB 651	INJECTOR HEAD O-RING 2-020	1	Provides a sealed cavity.
10	INJ 201A	SYRUP MANIFOLD	1	Connects flavor line to Blending Head.
11	INJ 117	TUBE CONNECTOR BODY - BLACK	1	Secures flavor line manifold to flavor lines.
12	ELE 700C	DRAW HANDLE SWITCH FOR C708	1	C706/707/708/709 and C708-SHAKE draw handle switch that activates Blending Assembly.
13	ELE 444	1 AMP, 1 1/4" SLOW BLOW FUSE	2	System overload protection.
14	CW 137	DRIVE MOTOR GEAR	1	Turns the Gear Box gears, powered by Drive Motor.
15	RUB 659	TAYLOR ADAPTER O-RING 8750	1	Creates tension to secure adapter to freezer door.

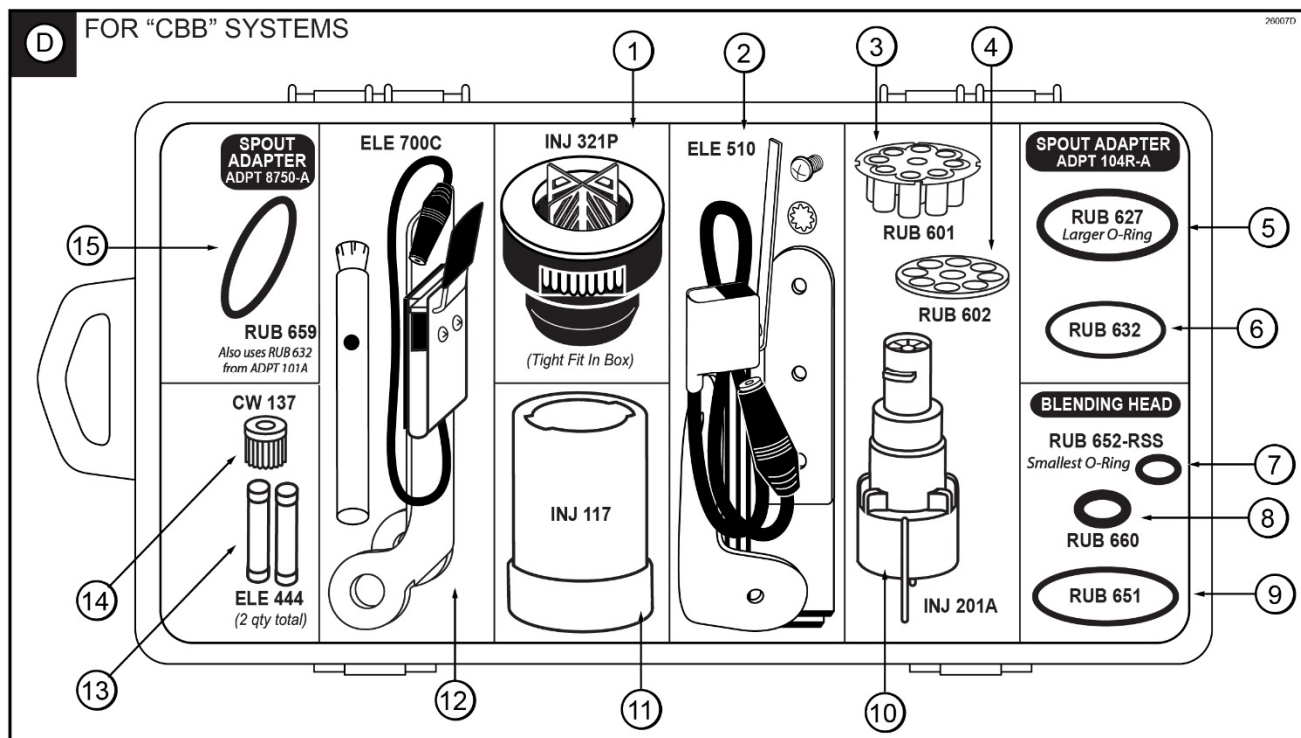


Figure 8D

**“FCB” Spare Parts Kit (See Figure 8E)**

ITEM	PART NO.	DESCRIPTION	QTY.	FUNCTION
<b>E</b>	SPR 5800FCB	SPARE PARTS KIT FOR FCB	1	Houses extra spare parts and wear items.
1	RUB 601	9-POS DUCKBILL CHECK VALVE	1	Provides sealed cavity to prevent leakage.
2	RUB 602	9-POS TUBE CONN. GASKET	1	Provides sealed cavity.
3	RUB 652-RSS	SMALLER SYRUP PORT O-RING	1	Seals the cavity inside the syrup port.
4	RUB 660	LARGER SYRUP PORT O-RING	1	Seals the cavity inside the syrup port.
5	INJ 201A	SYRUP MANIFOLD	1	Connects flavor line to the door spout.
6	FAS 2140	440 x 5/8 PHILLIPS P.H. SS SCREW	1	Secures the magnetic actuator to the FCB door handle.
7	MIS 3180	MAGNETIC ACTUATOR PIN	1	Activates ELE 530 Spigot Switch. Not used with FB 80FCB Auto Draw Valve system.
8	FAS 2042	4/40 LOCK NUT	1	Secures the screw to the magnetic actuator.
9	INJ 117	TUBE CONNECTOR BODY - BLACK	1	Secures flavor line manifold to flavor lines.
10	ELE 444	1 AMP, 1 1/4" SLOW BLOW FUSE	2	System overload protection.

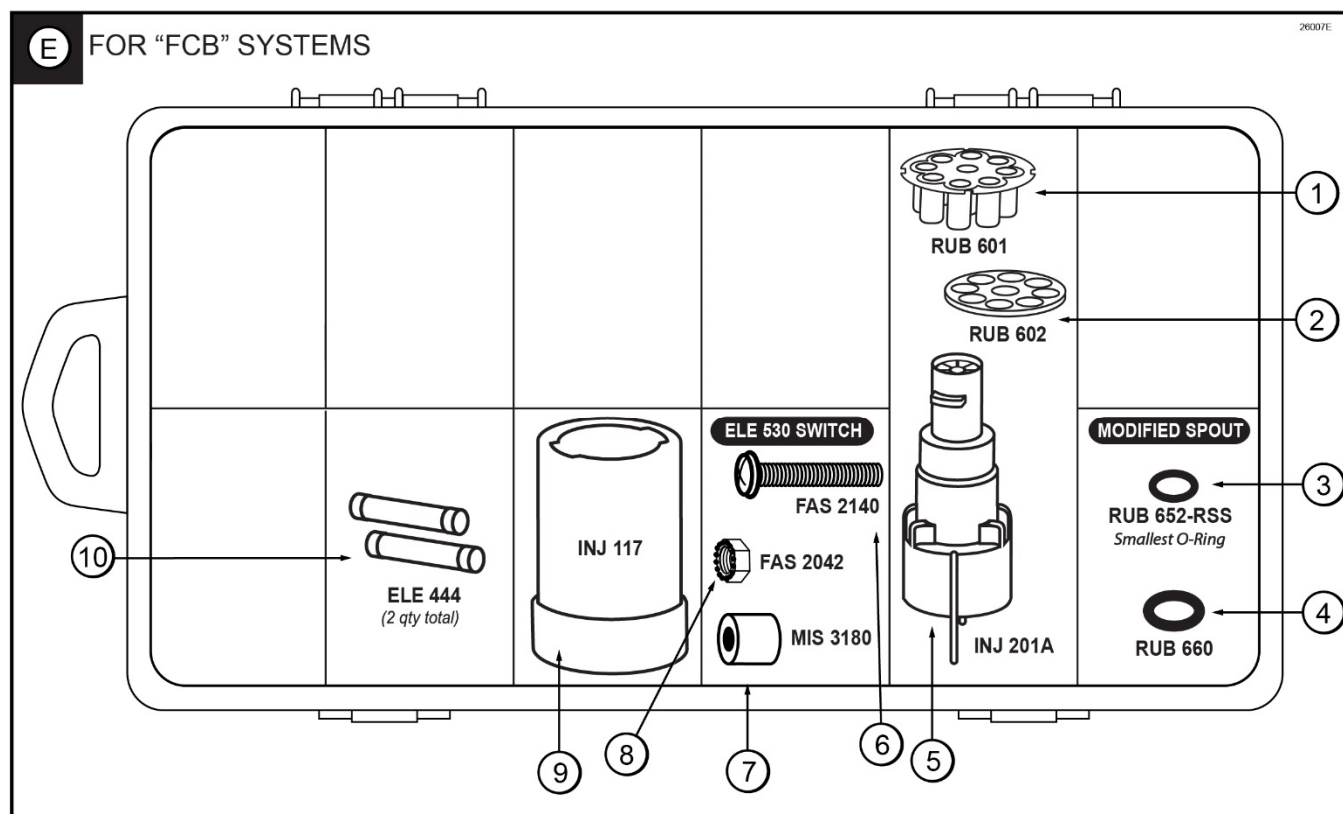


Figure 8E



## EQUIPMENT SETUP

### ADDITIONAL PRODUCTS & SUPPLIES REQUIRED:

- ENVIROKLEEN NO-RINSE CLEANER & FOOD CONTACT SANITIZER
- STERA-SHEEN® GREEN LABEL SANITIZER
- DAWN® DISH SOAP
- APPROVED, SERVICEABLE AND SANITIZED TOOLS AND BRUSHES.

(CONTACT YOUR LOCAL DISTRIBUTOR FOR RECOMMENDED PRODUCTS AND SUPPLIES).

**NOTE:** CLEAN AND SANITIZE YOUR HANDS BEFORE YOU PERFORM THE FOLLOWING PROCEDURES.

**NOTE:** INSPECT ALL WEAR ITEMS AND REPLACE IF NECESSARY.

**NOTE:** THE SYSTEM IS NOT TO BE USED BY PERSONS (INCLUDING CHILDREN) WITH REDUCED PHYSICAL, SENSORY OR MENTAL CAPABILITIES, OR LACK OF EXPERIENCE AND KNOWLEDGE, UNLESS THEY HAVE BEEN GIVEN SUPERVISION OR INSTRUCTION.

**NOTE:** CHILDREN ARE TO BE SUPERVISED WHEN USING THE SYSTEM AND SHALL NOT PLAY WITH THE SYSTEM.

**NOTE:** INSTALL THE SYSTEM WHERE AMBIENT TEMPERATURES ARE BETWEEN 60 AND 80 DEGREES FAHRENHEIT FOR CORRECT OPERATION.

**NOTE:** INSTALL THE SYSTEM IN A LOCATION WHERE ITS USE AND MAINTENANCE IS RESTRICTED TO TRAINED PERSONNEL.

Refer to your standard manual to perform these Equipment Setup installations:

- Installing the Spout Adapter
- Installing the Touch Panel & Bracket
- Spigot Switch Options
- Installing the Spigot Switch
- Sanitizing & Installing the Spout Assembly
- Mounting the Casing Assemblies

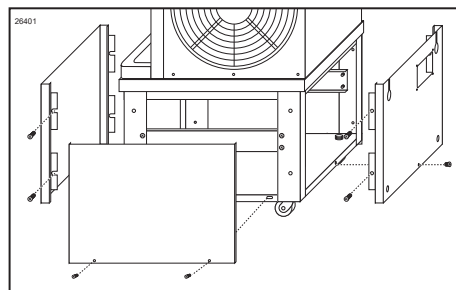
### Installing the Integrated-2S Cabinet, Unit Syrup Line, and Pump Harness Cable

The integrated cabinet is designed to be installed inside the Taylor C20600-WFB or C20600-WKN mobile cart. Included with the mobile cart are modified front and back panels to accommodate Flavor Burst's tubing and electronics wiring and to allow easy access to the system inside. If you already have a C206 cart and it does not have modified front and back panels, contact your local distributor. Otherwise, follow the instructions below to set up the Flavor Burst cabinet and connections.

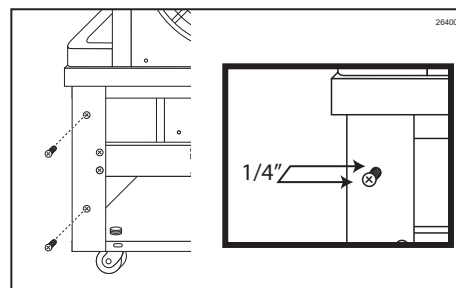
Ensure the inside of the C206 mobile cart is clean and ready for installation.

The following instructions and illustrations are consistent with a right-side mounting of the spout assembly. This is recommended for Taylor C722 / C723 freezer. However, in cases where right-side mounting is not possible, the Injector Assembly and tubes may be installed on the other side. Alternate instructions for a left-side mounting are listed where applicable.

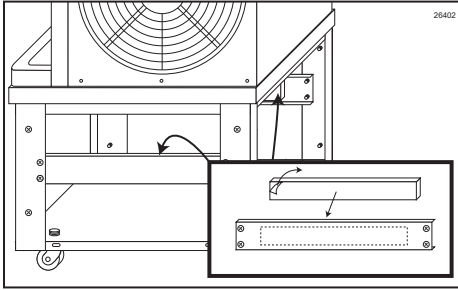
1. Remove the front, back and side panels from the Taylor C206 mobile cart.



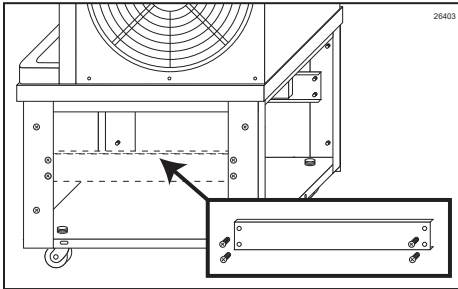
2. Install the side screws from the front panel into the side bars. Allow 1/4" of the posts to show. This allows the modified front panel to slide on and off the cart to give the operator access to the syrup trays.



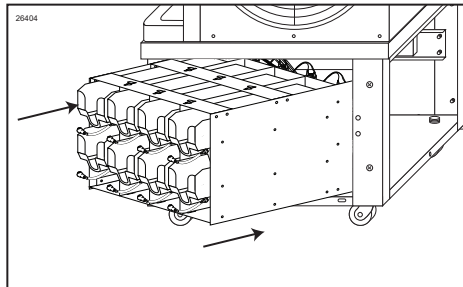
3. Remove the adhesive backing from the foam supports and install one inside each side support bar inside the Taylor cart.



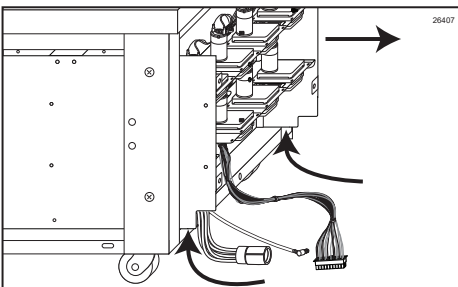
4. If you have the standard height C20600-WFB cart, skip to Step 5. Remove the side support bar from the open side of the cart.



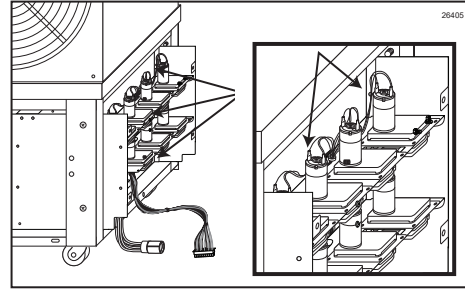
5. Angle the Flavor Burst cabinet inside the Taylor cabinet, taking care not to pinch or damage the tubing and pump wires.



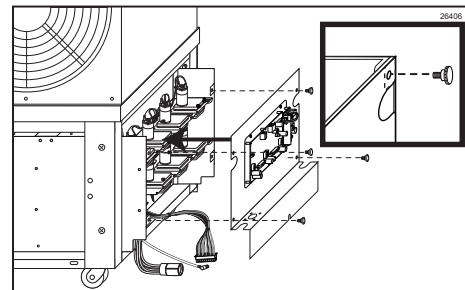
6. Center the unit from side to side within the Taylor cart and slide it all the way to the back till it is either flush with the edge of the back of the Taylor cart or hanging over a little bit. Ensure the 9-Tube Lead, sanitizer line, and pump harness cable hang down outside the cart.



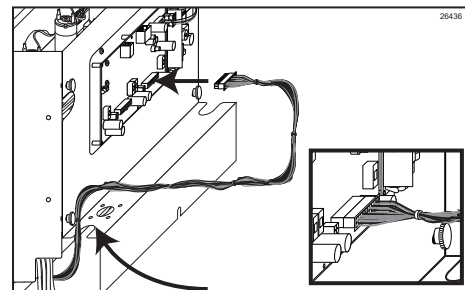
7. Check all tube and wiring connections and secure them if they came loose during the installation.



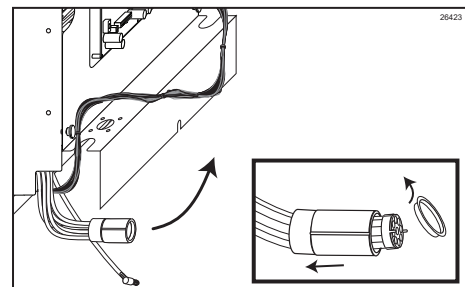
8. Place the electronics panel in position against the tabs on the back side of the integrated cabinet. Secure the electronics panel to the tabs using the thumb screws provided.



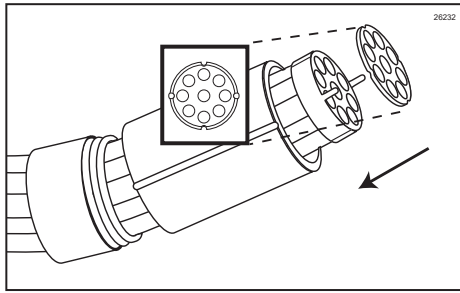
9. Lead the pump harness cable up through the opening of the electronics panel. Connect the harness to the port on the electronics board labeled "BANK A" or "PWRCONN2".



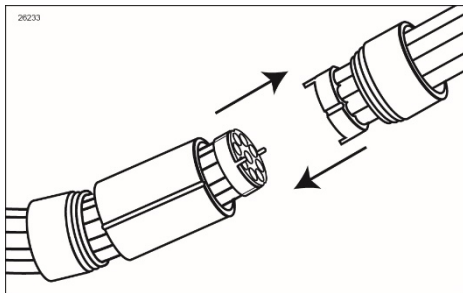
10. Locate the 9-Tube Lead under the electronics panel and remove the dust cap.



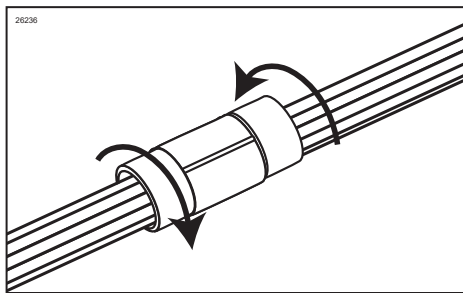
11. Ensure the 9-hole gasket is placed between the Lead and the 9-Tube Assembly coupler pins. The gasket must be in place to seal the connection and prevent leakage.



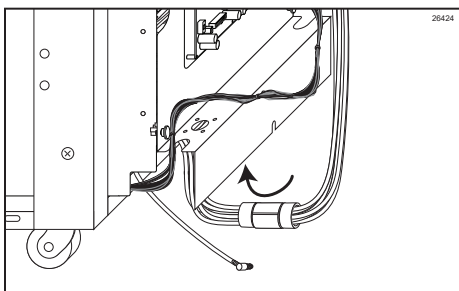
12. Align the coupler pins of the Lead with the coupler pins of the 9-Tube Assembly and connect the assemblies.



13. Slide the coupler casing over the connection and screw each coupler nut into each end of the casing. Tighten the coupler nuts to secure the connection.

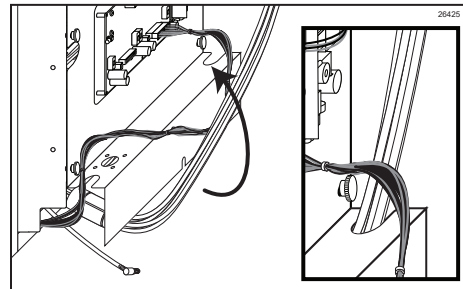


14. Place the connection underneath the electronics board shelf, not above.

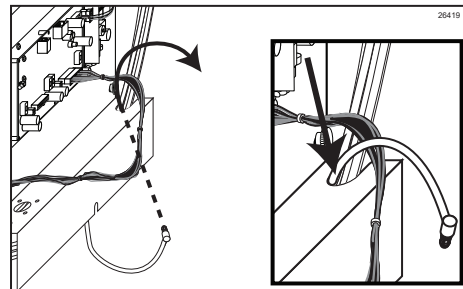


**DO NOT PLACE THE 9-TUBE ASSEMBLY AND LEAD CONNECTION ABOVE THE SHELF. IF THE CONNECTION BECOMES LOOSE OR IF THE SEAL BECOMES WORN OVER TIME, LEAKAGE COULD OCCUR AND COME IN CONTACT WITH THE PUMP CABLE CONNECTIONS. THIS MAY RESULT IN ELECTRICAL SHOCK AND DAMAGE TO THE UNIT.**

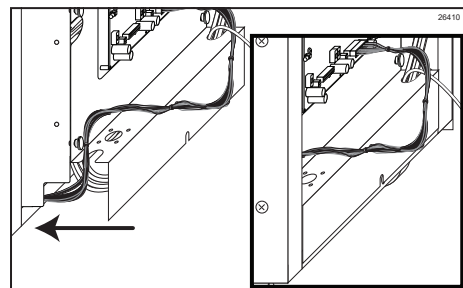
15. Position the 9-Tube Assembly tubes through the slotted opening of the electronics panel shelf.



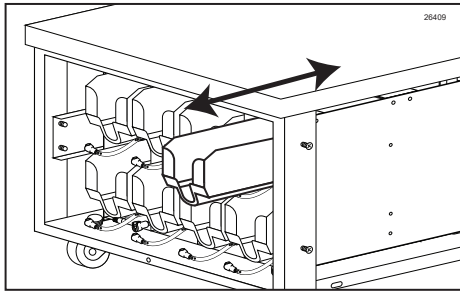
16. Guide the sanitizer supply line through the same slotted hole or the extra hole near it.



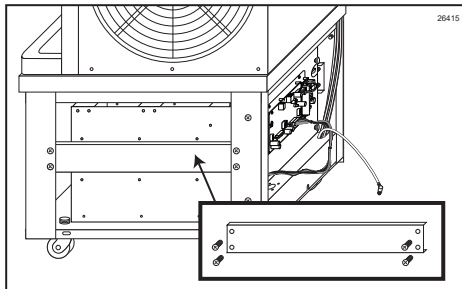
17. Slide the integrated cabinet as far into the Taylor cabinet as it will go with the lip of the electronics panel hanging over the edge, flush with the base of the Taylor cabinet. Take care not to pinch any tubes or wires that are under the electronics panel shelf. Be sure the integrated cabinet is centered between the sides.



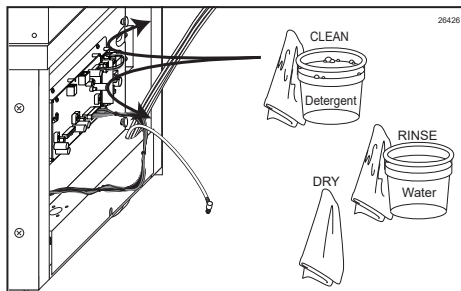
19. Open the front door and slide each tray out and in to ensure each one can be fully removed. Do the same for the Sanitizer Tank. Adjust the cabinet placement if necessary.



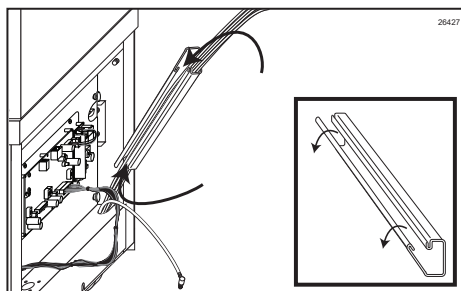
20. Reinstall the side support bracket.



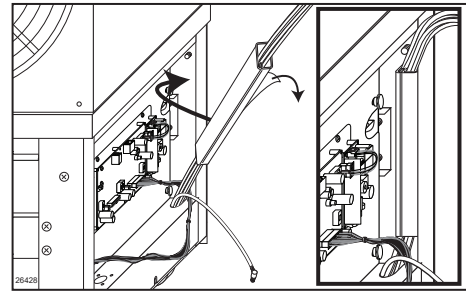
21. Clean, rinse and dry the Taylor cabinet's inside corner brace on the same side the 9-Tube Assembly is installed. Use detergent water, clean water and single service towels.



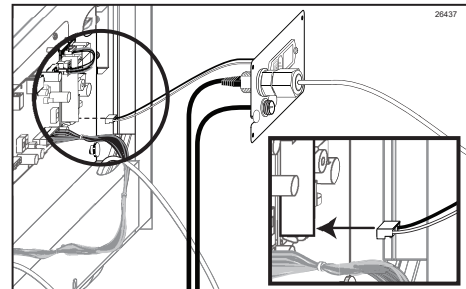
22. Open the plastic tube casing and close it around the 9-tube Assembly near the connections.



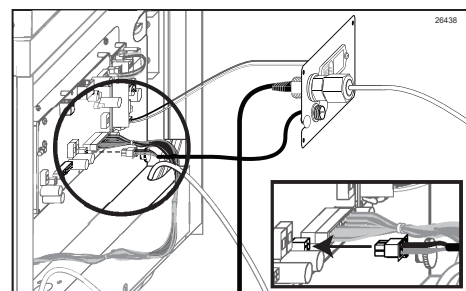
23. Remove the protective adhesive tape from the casing and slide it up the tubes until it can be placed comfortably inside the cabinet corner. Ensure the tubes do not bend sharply above or below the casing.



24. Locate the electronic accessories plate. Find the power entrance module connector, with the two thin cables attached to a small white plastic connector. Connect it to the small white plastic port on electronics board, located in the bottom right corner.

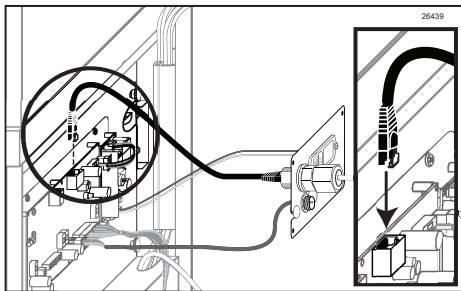


25. Locate the rotor cable on the electronics plate. It is a thick cable attached to a small white plastic connector. Connect it to the small white plastic port on electronics board labeled "BANK C" or "PWRCONN4" next to the pump harness cable connection.

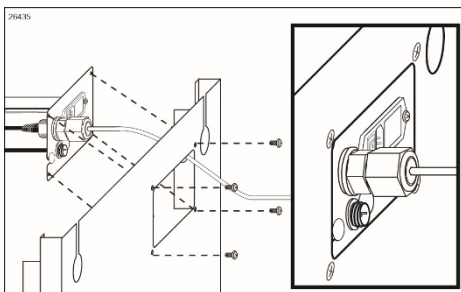


**NOTE:** CTP 80FCB-INT MODELS DO NOT HAVE A ROTOR CABLE CONNECTION. PROCEED TO THE NEXT STEP.

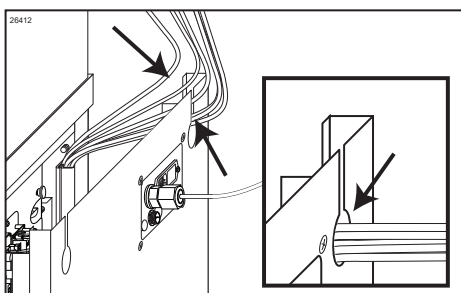
26. Locate the ethernet cable on the inside of the Taylor back panel. It is a thick black cable with an ethernet jack. Connect it to the ethernet port on electronics board, located at the middle top edge of the board.



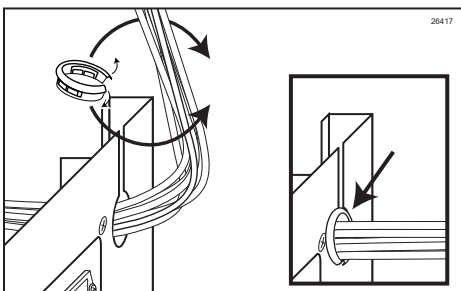
27. Install the electronics plate to the inside of the Taylor modified back panel using the screws provided.



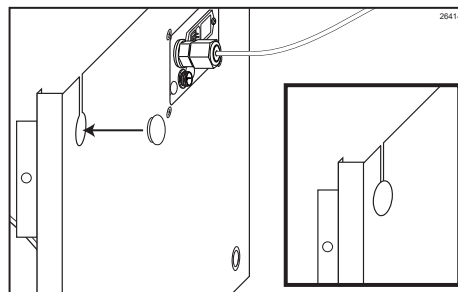
28. Channel the 9-Tube Assembly tubes through the slot on the modified Taylor back panel. Use the slot closest to the side of the freezer the 9-Tube Assembly is installed.



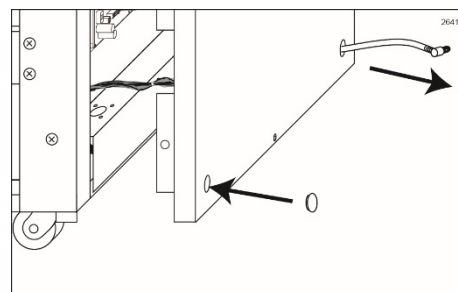
29. Pull open the plastic grommet and place it around the 9-Tube Assembly tubes. Snap the grommet into the hole on the modified Taylor panel.



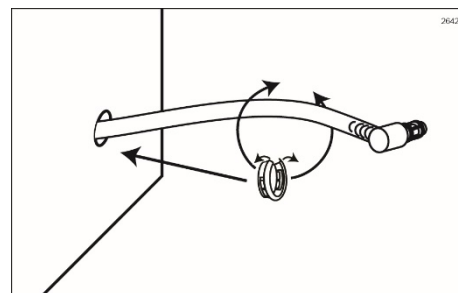
30. Install the plastic plug into the other hole on the modified Taylor panel.



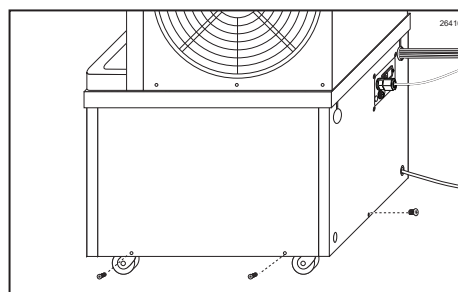
31. Insert the sanitizer supply line through the hole at the corner of the modified Taylor Panel. Plug the other cabinet hole with the small plastic plug.



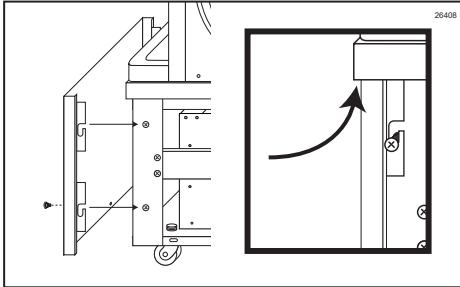
32. Wrap the small plastic grommet around the line and insert it into the hole. Gently pull the line through until there is resistance.



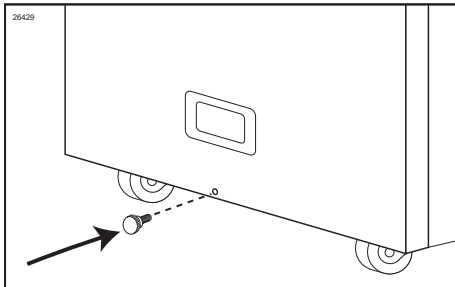
33. Install the modified back panel to the Taylor cabinet and reinstall the side panel.



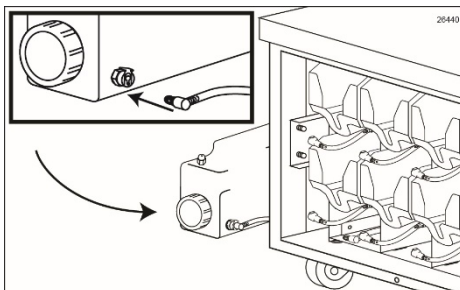
34. Slide the modified front panel onto the screw posts of the Taylor cart, lift the panel up under the cart cap.



35. Secure the front panel with a thumb screw at the bottom of the panel.



36. Set the tank in a place near the cabinet's sanitizer supply line. Locate the sanitizer supply line from the back of the cart and connect it to the Sanitizer Tank.



## Filling the Sanitizer Tank

The sanitizer tank system delivers solution to specific areas of the Flavor Burst® system such as the Injector/Blending Head and syrup lines during certain functions. Therefore, check the tank levels on a daily basis.

Two different sanitizing cleaners are used in the tank. Use Stera-Sheen Green Label® Sanitizer in the tank only for the duration of the Clean-In-Place procedure once every 30 days. It is approved by the NSF for cleaning the internal parts of the system, like the pumps and syrup lines. But it is formulated to be used within a few hours after mixing, after which, it begins to lose potency. It is not an effective sanitizer for the FLUSH SPOUT function for the 30 days between Clean-In-Place procedures.

Use Envirokleen No-Rinse Cleaner & Food Contact Sanitizer in the sanitizer tank between the monthly Clean-In-Place procedures. No-Rinse Cleaner is effective for the FLUSH SPOUT function, clearing and cleaning the spout and attached pieces after a serving is finished or if a serving hasn't been made after some time. It is formulated to hold its potency for up to 30 days in the tank.

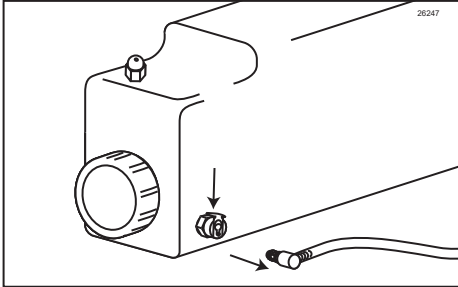
**NOTE:** USE STERA-SHEEN GREEN LABEL SANITIZER IN THE TANK FOR ONLY THE DURATION OF THE CLEAN-IN-PLACE PROCEDURE. WHEN THE PROCEDURE IS COMPLETE, YOU MUST REPLACE THE STERA-SHEEN SANITIZER WITH ENVIROKLEEN NO-RINSE CLEANER. STERA-SHEEN WILL LOSE POTENCY AFTER A FEW HOURS. ENVIROKLEEN WILL REMAIN POTENT FOR THE 30 DAYS UNTIL YOUR NEXT SCHEDULED CLEAN-IN-PLACE PROCEDURE.

**NOTE:** DO NOT USE PLAIN WATER IN THE TANK.

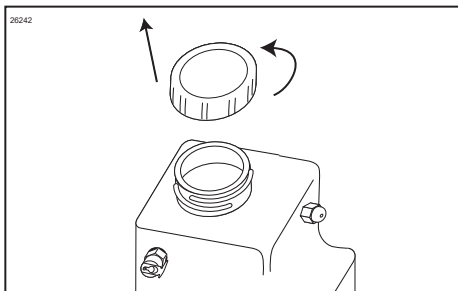
**NOTE:** DO NOT USE OTHER CLEANING AGENTS IN THE TANK UNLESS APPROVED BY FLAVOR BURST. MANY AGENTS, INCLUDING BLEACH WATER, LOSE POTENCY IN AS LITTLE AS A FEW HOURS. SOME AGENTS MAY BE TOO STRONG AND COULD CORRODE THE METAL PARTS OF THE ASSEMBLY.



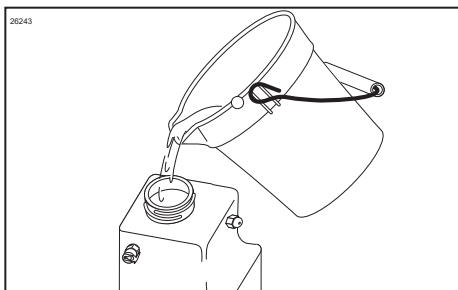
1. Wait until you are ready to perform the full Clean-In-Place Procedure (130 minute procedure) before filling the tank. When ready, mix two packets (4 oz total) of Stera-Sheen® Green Label with four gallons of warm water (108°F / 42°C) until dissolved. Pour approximately 16 oz. of sanitizer solution into a spray bottle.
2. If the sanitizer line is connected to the tank, disconnect the sanitizer line by pressing the lever on the Sanitizer Tank fitment and pulling the sanitizer supply line free.



3. Set the Sanitizer Tank upright and remove the cap.

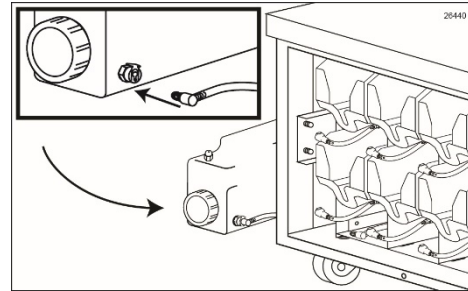


4. Fill the Sanitizer Tank with sanitizer solution. Reinstall the cap and tighten sufficiently.

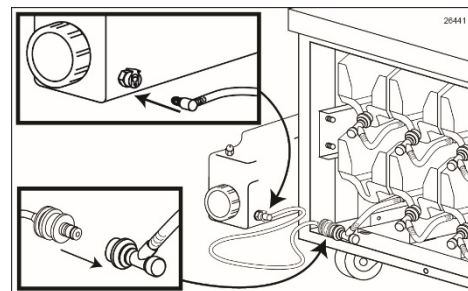


**NOTE:** USE THE REMAINING SANITIZER SOLUTION FOR MANUAL SANITIZING IN THE CLEAN-IN-PLACE PROCEDURE.

5. **FOR “SS”, “BLD”, “BEV” & “CBB” SYSTEMS:** Set the tank in its place near the cart. Connect the sanitizer supply line from the back of the cart to the Sanitizer Tank.



**FOR “FCB” SYSTEMS:** The Pump Flush Assembly is located under one of the bottom trays and is only connected to the tank when flushing the syrup lines. Keep the assembly inside the cabinet until you are ready to flush syrup lines. When flushing lines, connect the tank fitment end of the assembly to the Sanitizer Tank, and the syrup fitment end to the syrup line you are flushing.



## EQUIPMENT SETUP – Continued

Continue with the EQUIPMENT SETUP instructions in your standard operations manual(s). For systems flavoring two different product types, refer to each type of manual for setup on that freezer. For example, to install the Spigot Switch on a freezer striping soft serve product, refer to the CTP 80SS manual. For switch setup on an FCB freezer, see the CTP 80FCB manual. Perform the instructions in the following sections of EQUIPMENT SETUP:

- Power Connections and Power Up
- Installing Flavors and Priming Syrup Lines
- Color Touch Panel Overview

## OTHER IMPORTANT INFORMATION

Consult your standard manual for important information and instructions on these topics:

- Daily Opening Procedures
- Daily Closing Procedures
- Replacing the Syrup Flavors
- Scheduled Maintenance
- Color Touch Panel Overview
- Directory of Cleaning Procedures
- Parts Replacement Schedule
- Recommended Maintenance Items Replacement Schedule
- Alternate Parts and Kits by Freezer Model
- Ordering Service Information

Consult your Color Touch Panel Manual for detailed information and instructions on how to manage your Color Touch Panel functions.



## ORDERING/SERVICE INFORMATION

Taylor Distributor \_\_\_\_\_

Address \_\_\_\_\_

Phone \_\_\_\_\_

Date of Installation \_\_\_\_\_

### Data Plate

The data plate provides necessary information that the operator should record and refer to when calling for parts or service. The data plate is located on the center panel inside the cabinet.

Complete for quick reference when this information is requested.

1. Model Number: \_\_\_\_\_
2. Serial Number \_\_\_\_\_
3. Voltage \_\_\_\_\_
4. Maximum Fuse Size \_\_\_\_\_ Amps
5. Minimum Wire Ampacity \_\_\_\_\_ Amps

Flavor Burst is a registered trademark of the Flavor Burst Company. Taylor is a registered trademark of the Taylor Company. All rights reserved.